

THIS DRAWING IS UNPUBLISHED.

RELEASED FOR PUBLICATION

© COPYRIGHT BY TYCO ELECTRONICS CORPORATION. ALL RIGHTS RESERVED.

LOC

DIST

REVISIONS

変更

P

LTR

DESCRIPTION

DATE

DWN

APVD

E1

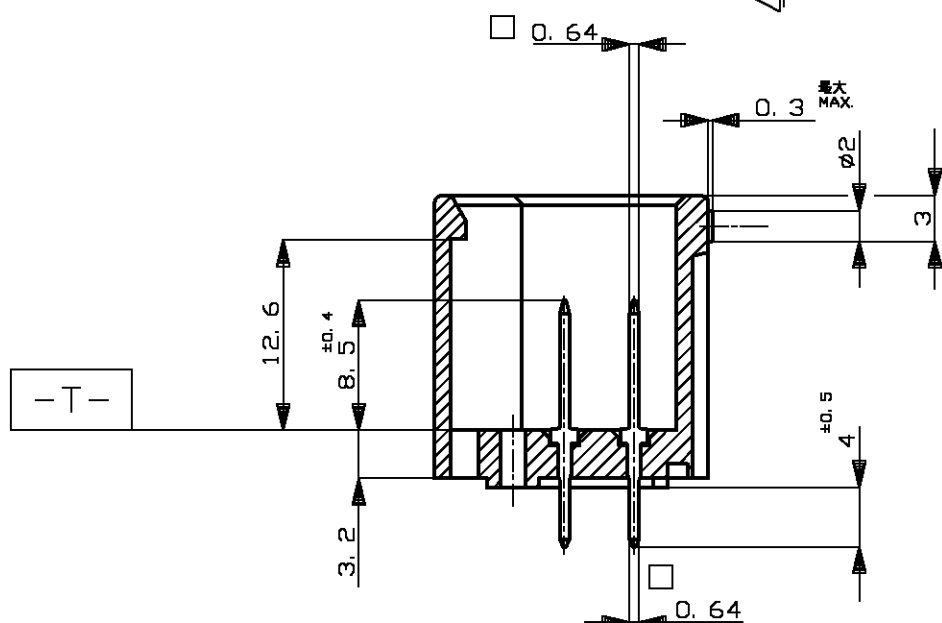
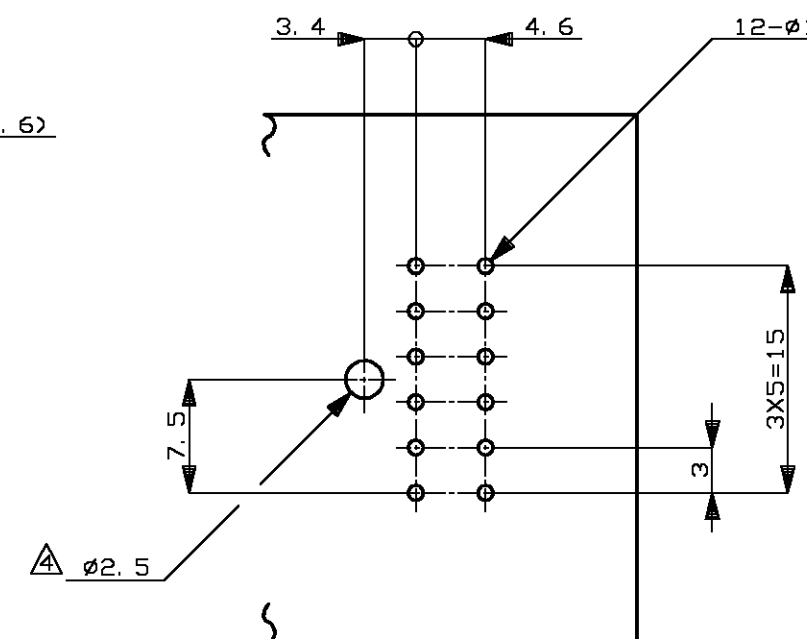
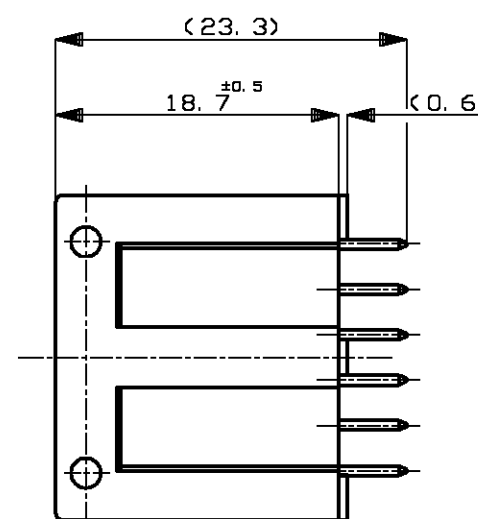
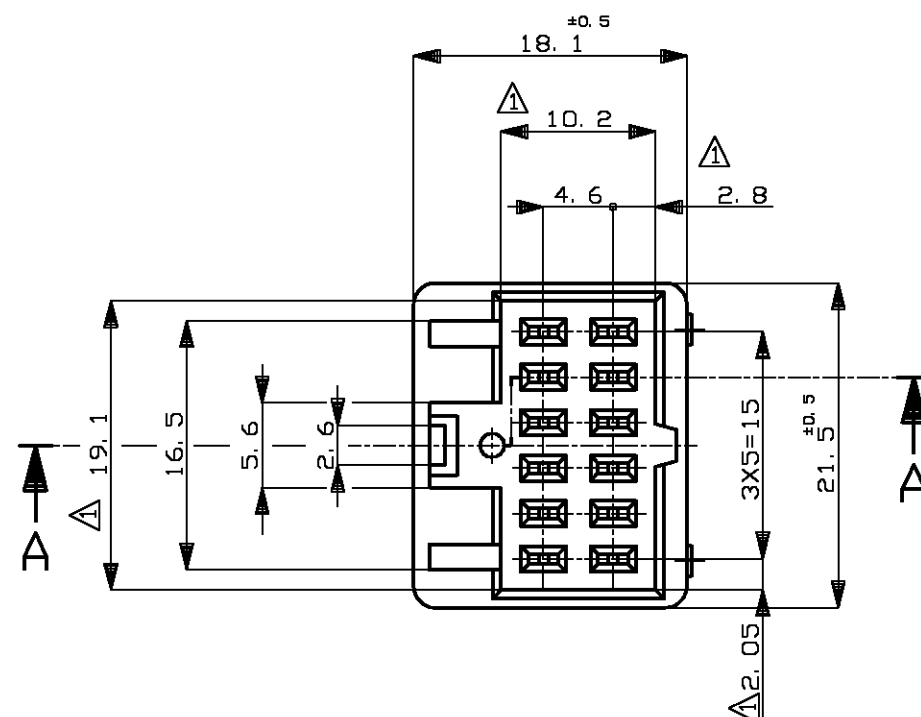
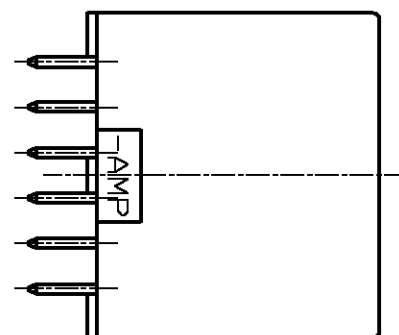
REVISED

ECR-06-003257

10FEB06

TS

KB

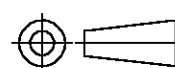
プリント基板取付穴寸法 公差±0.1
MOUNTING DIMENSIONS FOR P.C.B. ; TOLERANCES ±0.1

- △ -T- 面より2mmの範囲で測定
2. 適合する相手ハウジング型番は172245, 172854
3. 適用製品規格 NO. 108-5124
△ 推奨取付ねじ ; JIS B1115, B1122 タッピンねじ
なべ3種 呼び径2, 長さ5

- △ THESE DIMENSIONS TO BE MESURED BETWEEN -T- AND 2.0.
2. MATABLE PLUG HOUSING ; 172245, 172854
3. PRODUCT SPECIFICATION ; 108-5124
△ RECOMMENDED MOUNTING SCREW ; JIS B1115 OR B1122
PAN HEAD TAPPING SCREW, CLASS 3, DIAMETER 2, LENGTH 5.

SELECTIVE-TIN (MATTE)	SELECTIVE-TIN (BRIGHT)	BLACK	172259-4
SELECTIVE-TIN	PRE-TIN	BLACK	172259-2
SOLDERING SIDE 半田付け部	CONTACT SIDE 接触部側	COLOR 色	PART NUMBER 製品型番
CONTACT FINISH コンタクト仕上			

THIS DRAWING IS A CONTROLLED DOCUMENT.

DIMENSIONS:
単位: 概
mmTOLERANCES UNLESS
OTHERWISE SPECIFIED:
一般公差

0 PLC	± -
1 PLC	± -
2 PLC	± -
3 PLC	± -
4 PLC	± -
ANGLES	± -

FINISH
仕上

SEE TABLE

MATERIAL
材料HOUSING ; 66NYLON
CONTACT ; COPPER ALLOY

一般公差
(GENERAL TOLERANCE)
10以下 : ±0.2
10を超え 30以下 : ±0.25
30を超え 100以下 : ±0.3
角 度 : ±3°

DWN

T.SHINOHAR

10FEB06

CHK

K.BETSUI

10FEB06

APVD

K.BETSUI

10FEB06

PRODUCT SPEC

製品規格

SEE NOTE 3

APPLICATION SPEC

取付適用規格

WEIGHT

-

CUSTOMER DRAWING

tyco
ElectronicsTyco Electronics AMP K.K.
Kawasaki, JapanNAME
名称12POSITION VERTICALTYPE CAP HOUSING ASSEMBLY
DUALLINE INTERLOCK CONNECTOR

SIZE

CAGE CODE

DRAWING NO

番号

RESTRICTED TO

A3

00779

C-172259

SCALE
尺度 2:1SHEET
1 OF 1REV
E1