

Technical drawing of a cross-section of a multi-ribbed structural member. The drawing shows a series of vertical ribs separated by grooves. Dimensions include a total width of 4.2, a rib width of 3.45, a rib height of  $5 \pm 0.1$ , and a groove width of  $1 \pm 0.1$ . A section line '1-1' is indicated on the right side.

**REMARKS/Bemerkungen**

1 CAVITY SUITABLE FOR STANDARD TIMER CONTACTS LISTED IN  
PROD.SPEC. 108-18049. ITEM 3.3.2  
Kammer geeignet für Standard Timer Kontakte gelistet in  
Prod. Spec. 108-18049, Punkt 3.3.2

2 CONTACT CAVITY NO.  
Kontaktkammernummerierung

3 MATING STOP  
Tiefenanschlag

4 AREA FOR TE LOGO ACC. TO SPEC 202-36  
Bereich für TE Logo nach Spec. 202-36

5 POLARIZATION RIB POSITION "a" AND/OR "b"  
Polarisierungsrippe Position "a" und/oder "b"

6 KEYING RIB POSITION "c" AND/OR "d"  
Kodierrippe Position "c" und/oder "d"

6a KEYING RIB POSITION "c" AND/OR "d" AT THE END WALLS OF THE HOUSING  
Kodierrippe Position "c" und/oder "d" an den Gehäusestirnseiten

7 LOCKING LATCH  
Rasthaken

8 TE PART NO (PN)  
TE Bestell Nr. (PN)

9 DESIGN OF THE HOUSINGS ACC. TO RAST 5 STANDARD  
Gehäuseausführung gemäss RAST 5 Vorgabe

10 GENERAL SUITABLE TAB HEADER SEE RAST 5 PERFORMANCE  
Generell passende Flachsteckerwannen siehe RAST 5 Vorgabe

11 PACKAGING; BULK PACKAGING IN CORRUGATED BOX PN 740580-2  
2 POS. 2500 PIECES PER BOX / 3 POS. 2000 PIECES PER BOX  
Verpackung: Schüttgut in Versandkarton Pn 740580-2  
2pol. 2500 Stück per Karton / 3pol. 2000 Stück per Karton

12 DIMENSION A, B, C AND D SEE SHEET 2 OF 3

13 MATERIAL CORRESPONDS TO THE REQUIREMENT EN 60335  
(INCL. GLOW WIRE TEST 750° WITHOUT FLAME)  
Material entspricht den Anforderungen der EN 60335  
(inkl. Glühdrahttest 750° ohne Flamme)

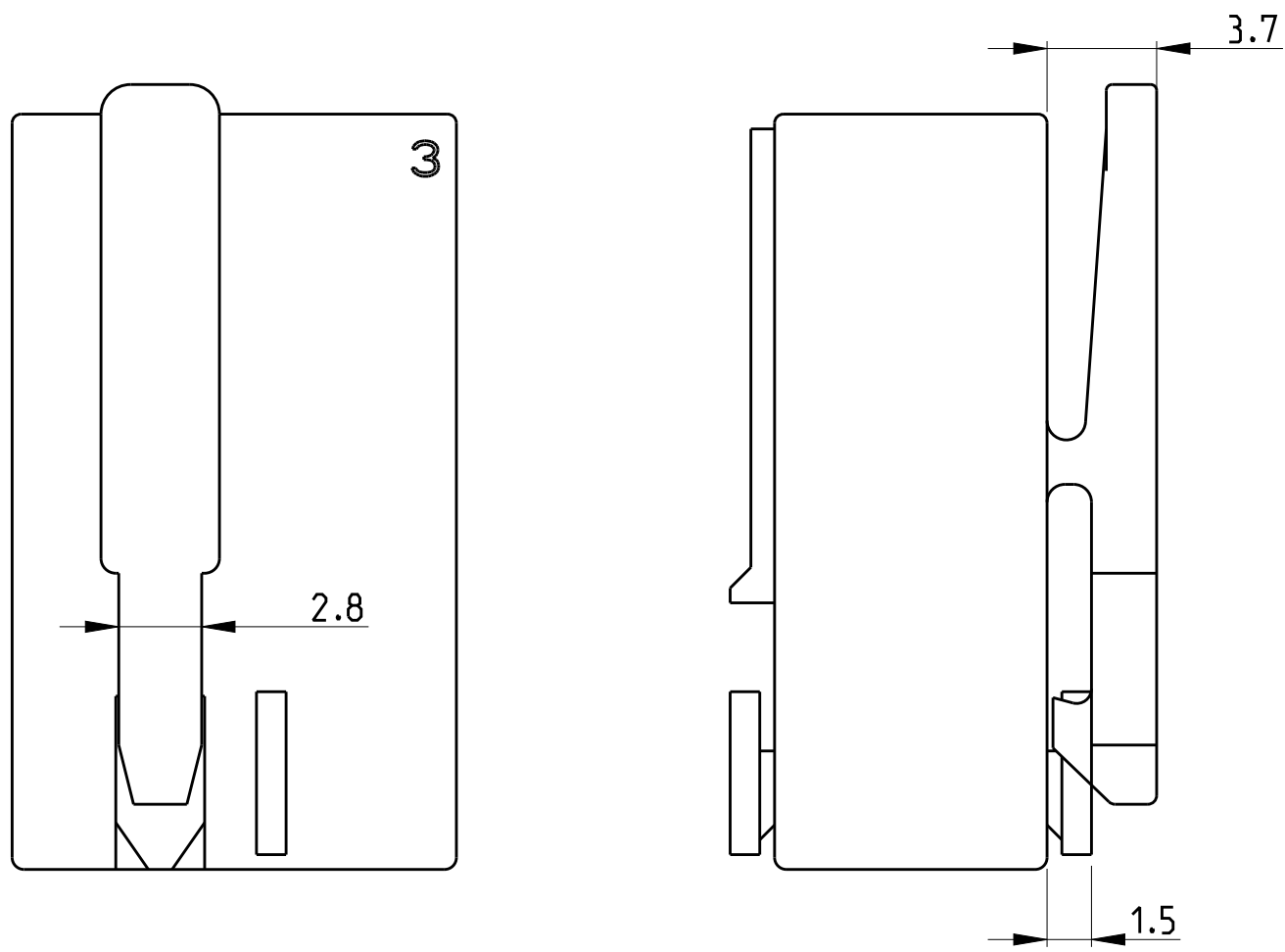
14 RATIO NUMBER OF THE KEYING VERSION, INKJET PRINTED. SEE SHEET 2  
Kodierungskennnummer, mit Tintenstrahldrucker aufgebracht, siehe Blatt 2

15 PRELIMINARY- NOT RELEASED FOR PRODUCTION

16 ONLY FOR 9-1241961-7, DIMENSION 3.2 -0.2

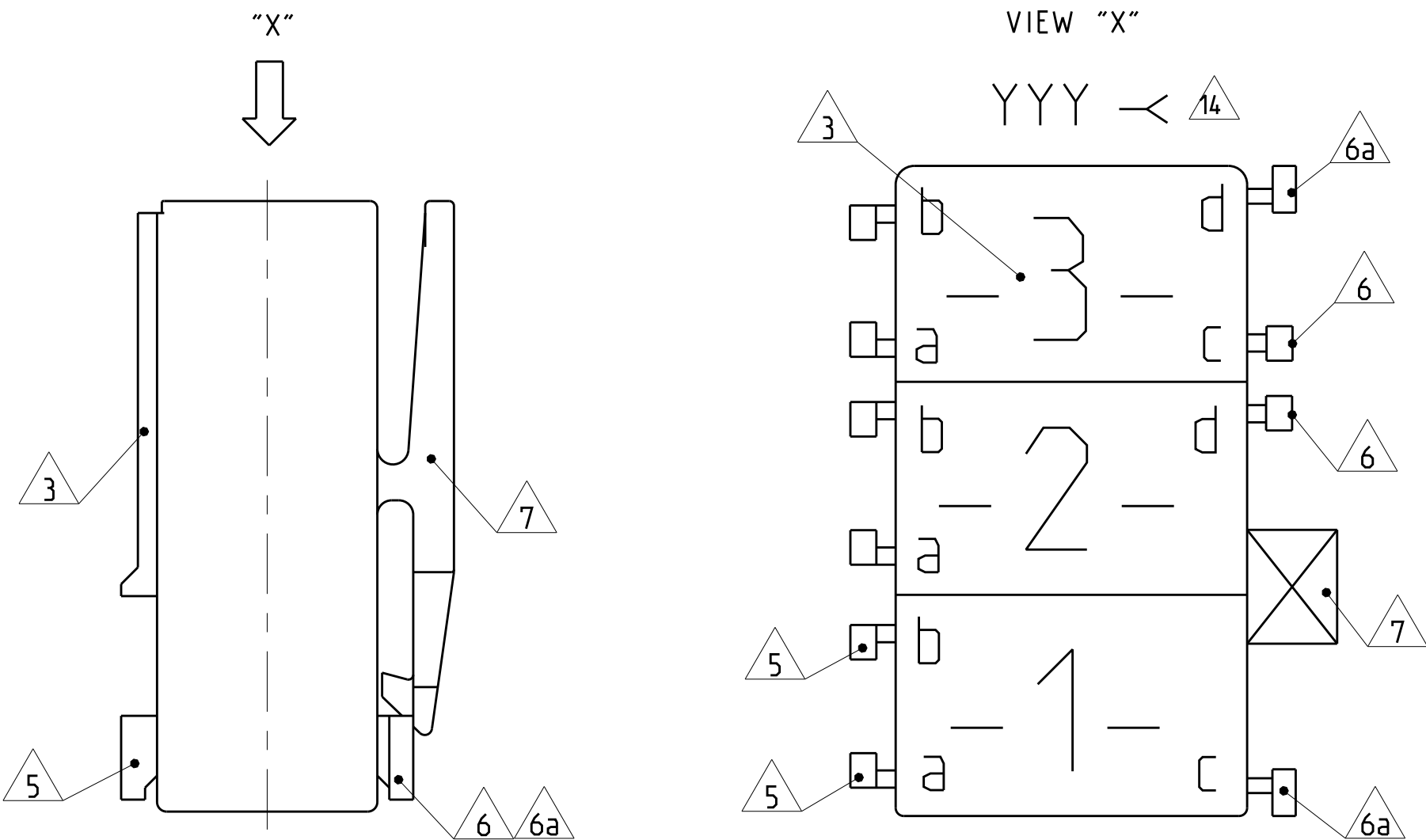
4805 (3/11)

ONLY 5-1241961-7, 1-1241961-9, 7-1241961-7, 2345753-1



ALL OTHER DIMENSIONS SEE SHEET 1 OF 3

KEY LAYOUT DESCRIPTION



X-XXXXXX-X

SPECIAL VERSION: UL94 VO & GWT 750 NF & CTI 350								
5-1241961-7	3	6	1	15	10	PA66	NATURAL	A
1-1241961-9	3			15	10		NATURAL	A
7-1241961-7	3			15	10		NATURAL	A

SPECIAL VERSION: UL94 VO & GWT 750 NF								
2322164-1	4	4	0.5	20	15	PA66	NATURAL	1

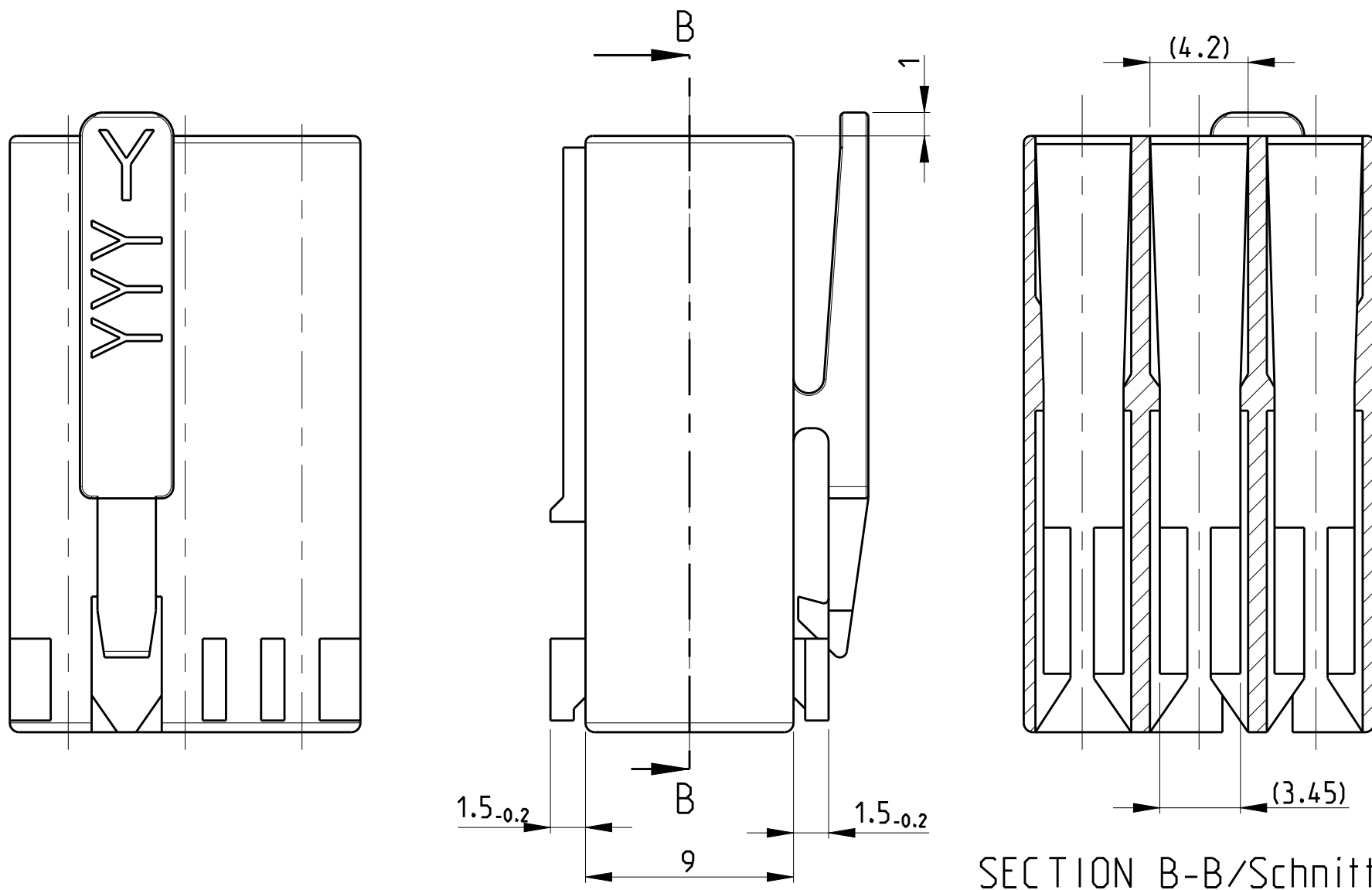
SPECIAL VERSION: UL94 V2 & GWT 750 NF								
6-2178575-7	3	4	0.5	15	10	PA6 GF15	NATURAL	A

SPECIAL VERSION: UL94 VO & GWT 750 NF								
3-2178412-7	3	6	1	15	10	PA66 UL94 VO & GWT 750 NF	NATURAL	1
4-2178412-7	3			15	10		NATURAL	1
8-2178412-2	2			10	5		NATURAL	1

UL94 VO & GWT 750 NF								
2322917-4	4	4	0.5	20	15	PA66 UL94 VO & GWT 750 NF	NATURAL	C
2322917-2	2			10	5		NATURAL	1
2315717-1	2			10	5		NATURAL	C
2315717-2	2	4	0.5	10	5		NATURAL	C
2315717-3	2			10	5		NATURAL	C
2315717-4	4			20	15		NATURAL	C
2315717-5	4			20	15		NATURAL	C
2315717-6	3			15	10		NATURAL	C
2315717-7	3			15	10		NATURAL	C
PART NO.	POS.	DIM C	DIM D	DIM A	DIM B	MATERIAL	COLOUR	REV.

PAY ATTAENTION !  
DIFFERENT CAVITY GEOMETRY AND LOCKING LATCHE OVERHANG  
Bitte beachten !  
Unterschiedliche Kammergeometrie und Rasthakenuaberstand.

FOR 2 POS. AND 3 POS.



ALL OTHER DIMENSIONS SEE SHEET 1 OF 3  
Alle anderen Masse siehe Seite 1 von 3

SPECIAL MATERIAL: UL94 VO								
2345753-1	3	6	1	15	10	PA66	NATURAL	1

SPECIAL MATERIAL								
1955507-4	4	6	1	20	15	PA66 UL 94 VO	NATURAL	1
9-1955506-2	2			10	5		NATURAL	1

6-1241961-7	3	4	0.5	15	10	PA 6 UL94V-2	NATURAL	1
4-1241961-7	3			15	10	PA 6 UL94V-2	NATURAL	A
3-1241961-7	3			15	10	PA 6 UL94V-2	NATURAL	A
1-1955422-7	3			15	10	PA 66 UNFILLED UL94 VO	NATURAL	A
5-1955422-7	3	6	1	15	10	PA 66 UNFILLED UL94 VO	NATURAL	A
4-1955422-3	2			10	5	PA 66 UNFILLED UL94 VO	NATURAL	A
2-1241817-3	3			15	10	PA 66 UL94 V-2	Green	E
0-1955422-6	3			15	10	PA 66 UNFILLED UL94 VO	NATURAL	A
8-1241961-8	3	4	0.5	15	10	PA 6 UL94V-2	natural	C
0-1241961-8	3			15	10			A
8-1241961-3	2			10	5			C
3-1241961-1	2			10	5	PA 6 UL94V-2	NATURAL	C
0-1955422-1	2	6	1	10	5	PA 66 UNFILLED UL94 VO	NATURAL	A
PART NO	POS	DIM C	DIM D	DIM A	DIM B	MATERIAL	COLOUR Farbe	REV./Rev.

LOC		DIST		P		LTR		DESCRIPTION		DATE		DWN		APVD	
								SEE SHEET-01							
0-1241959-5	5	4	0.5	25	20	PA 6 UL94V-2	13	Natural/natur						B	
4-1241959-4	4			20	15									A	
2-1241959-4	4			20	15									B	
0-1241959-4	4			20	15										
2-1241817-5	5	6	1	25	20	PA 6.6 UL94V-2		Natural/natur						C	
0-1241817-5		4	0.5	25	20			Black/schwarz							
3-1241817-4	4	6	1	20	15			Violet/violett							
2-1241817-4		6	1	20	15			Grey/grau							
0-1241817-4		4	0.5	20	15			Natural/natur							
2-1241983-2	2	4	0.5	10	5	PA 6 UL94V-2	13	Green/grün						C	
1-1241983-2				10	5			Violet/violett							
0-1241983-2				10	5			TARGET RAL 4001							
8-1241983-2				10	5			Yellow/gelb							
5-1241983-3				10	5			Black/schwarz							
6-1241983-2				10	5			Blue/blau							
				10	5			Red/rot							
9-1241961-7	3	4	0.5	15	10	PA 6 UL94V-2	13	Natural/natur						C	
9-1241961-8		4	0.5	15	10										
6-1241961-8		4	0.5	15	10										
5-1241961-8		4 or 6	0.5 or 1	15	10										
4-1241961-8		4	0.5	15	10										
7-1241961-8		4	0.5	15	10										
1-1241961-8		4 or 6	0.5 or 1	15	10										
3-1241961-8		6	1	15	10										
2-1241961-8				15	10										
2-1241961-7				15	10										
1-1241961-7	4	0.5	15	10											
9-1241961-9	2	4	0.5	15	10	PA 6 UL94V-2	13	Natural/natur						C	
0-1241961-6				15	10										
3-1241961-3				10	5										
2-1241961-2				10	5										
5-1241961-2				10	5										
4-1241961-3				10	5										
7-1241961-2				10	5										
7-1241961-3				10	5										
6-1241961-3				10	5										
3-1241961-2				10	5										
5-1241961-3				10	5										
6-1241961-2				10	5										
0-1241961-3				10	5										
8-1241961-2				10	5										
9-1241961-2				10	5										
0-1241961-1	10	5													
9-969484-9	3	6	1	15	10	PA 6.6 UL94V-2		Yellow/gelb							
2-969484-8				15	10										
4-969484-8				15	10										
0-969484-8	4 or 6	6	0.5 or 1	15	10										
9-969484-7				15	10										
8-969484-7				4	0.5										15
7-969484-7				15	10										
6-969484-7				15	10										
5-969484-7				4	0.5										15
4-969484-7	4			15	10										
3-969484-7				15	10										
2-969484-7				4	0.5										15
1-969484-7	3	4	0.5	15	10										
0-969484-7				15	10										
9-969484-6				15	10										
8-969484-6	6	1		15	10										
7-969484-6				15	10										
6-969484-6				15	10										
5-969484-6				15	10										
4-969484-6				15	10										
3-969484-6				15	10										
2-969484-6	6	1		15	10										
1-969484-6				15	10										
0-969484-6				15	10										
9-969484-3	4	0.5		10	5	PA 6.6 UL94V-2		Natural/natur						H	
7-969484-3				10	5										
6-969484-3				10	5										
5-969484-3				10	5										
4-969484-3				10	5										
3-969484-3	2	4	0.5	10	5										
2-969484-3				10	5										
1-969484-3				10	5										
0-969484-3				10	5										
9-969484-2				10	5										
8-969484-2				10	5										
7-969484-2				10	5										
6-969484-2				10	5										
5-969484-2				10	5										
4-969484-2				10	5										
3-969484-2	6	1		10	5										
2-969484-2				10	5										
1-969484-2				10	5										
0-969484-2				10	5										
9-969484-1				10	5										
8-969484-1	4	1		10	5										
7-969484-1				10	5										
6-969484-1				10	5										
5-969484-1	6	1		10	5										
4-969484-1				10	5										
3-969484-1				10	5										
2-969484-1	4	0.5		10	5										
1-969484-1				10	5										
0-969484-1				10	5										
PART NO	POS.	DIM C	DIM D	DIM A	DIM B	MATERIAL		COLOUR		REV					
		12	12	12	12										

THIS DRAWING IS A CONTROLLED DOCUMENT.				DWN: Kishor M 18-10-07		<div>TE</div> TE Connectivity				NAME: STANDARD TIMER HSG. RAST 5 MARK II Standard Timer Gehaeuse RAST 5 Mark II				
DIMENSIONS:		TOLERANCES UNLESS OTHERWISE SPECIFIED:		CHK: K. Muniz 18-10-07										
mm				APVD: Th. Kienner 18-10-07										
				PRODUCT SPEC: 108-1804.9										
MATERIAL: SEE TABLE SHEET 2 OF 3		FINISH: -		WEIGHT: -		SIZE: A1		CAGE CODE: 00779		DRAWING NO: 1241961		RESTRICTED TO: -		
				Customer Drawing		SCALE: 5:1		SHEET: 2 OF 3		REV: 4				

8

7

6

5

4

3

2

1

THIS DRAWING IS UNPUBLISHED.

RELEASED FOR PUBLICATION

ALL RIGHTS RESERVED.

LOC

DIST

P

LTR

REVISIONS

DESCRIPTION

DATE

DWN

APVD

SEE SHEET-01

2.00

0-969484-1

2.14

1-969484-1  
2315717-2

2.13

2-969484-1

2.12

3-969484-1 OBSOLETE

2.11

4-969484-1

2.10

5-969484-1 OBSOLETE

2.09

6-969484-1

2.07

7-969484-1 OBSOLETE

2.06

8-969484-1

2.04

9-969484-1 OBSOLETE

2.03

0-969484-2

2.02

1-969484-2 OBSOLETE

2.08

2-969484-2

2.21

3-969484-2

2.99

4-969484-2  
2315717-1

2.20

5-969484-2

2.19

6-969484-2

2.18

7-969484-2

2.17

8-969484-2  
2315717-3

2.16

9-969484-2

2.31

0-969484-3

2.15

1-969484-3 OBSOLETE

2.05

2-969484-3 OBSOLETE

2.30

3-969484-3 OBSOLETE

Ohne/None

4-969484-3

Ohne/None

5-969484-3

Ohne/None

6-969484-3

Ohne/None

7-969484-3 OBSOLETE

Ohne/None

5-1241961-2

Ohne/None

0-1241961-1

PA6

2-1241961-2

PA6

3-1241961-2

PA6

6-1241961-2

PA6

7-1241961-2

PA6

8-1241961-2  
8-2178412-2

PA6

9-1241961-2

PA6

0-1241961-3

PA6

3-1241961-3 OBSOLETE

PA6

4-1241961-3

PA6

5-1241961-3

PA6

6-1241961-3

PA6

7-1241961-3

PA6

6-1241983-2

PA6

8-1241983-2

PA6

5-1241983-3

0-1241983-2

1-1241983-2

2-1241983-2

3-1241961-1

8-1241961-3  
2322917-2

4-1955422-3

9-1955506-2  
PRELIMINARY

0-1955422-1

3.00

0-969484-6 OBSOLETE

3.38

1-969484-6 OBSOLETE

3.18

2-969484-6

3.37

3-969484-6

3.35

4-969484-6 OBSOLETE

3.33

5-969484-6 OBSOLETE

3.32

6-969484-6 OBSOLETE

3.20

7-969484-6

3.10

8-969484-6

3.09

9-969484-6

3.08

0-969484-7 OBSOLETE

3.39

1-969484-7  
1-1955422-7 PRELIMINARY

3.31

2-969484-7 OBSOLETE

3.40

3-969484-7

3.99

4-969484-7 OBSOLETE

Ohne/NONE

5-969484-7

3.45

6-969484-7 OBSOLETE

3.47

7-969484-7 OBSOLETE

3.65

8-969484-7

3.48

9-969484-7 OBSOLETE

3.66

0-969484-8

Ohne/NONE

1-969484-8 OBSOLETE

Ohne/NONE

2-969484-8

PA6

9-1241961-9

3-1241961-8

9-969484-9

4-1241961-8

5-1241961-8

0-1241961-6

2-1241961-7  
5-1241961-7

1-1241961-8

2-1241961-8

6-1241961-8  
7-1241961-7

7-1241961-8

1-1241961-7

9-1241961-8

8-1241961-8

2-1241817-3

0-1241961-8

3-1241961-7

4-1241961-7

5-1955422-7

6-1241961-7  
1-1241961-9  
0-1955422-6  
6-2178575-7  
2345753-1

9-1241961-7

0-1241959-4  
0-1241817-4

2-1241959-4

4-1241959-4  
2315717-4

0-1955507-4  
PRELIMINARY

0-2315717-5

2-1241817-4

3-1241817-4  
2322164-1

0-1241959-5

0-1241817-5

2-1241817-5

0-1241961-6

2-1241817-7

1-1241961-8

2-1241961-8

3-1241961-7

4-1241961-7

5-1955422-7

6-1241961-7  
1-1241961-9  
0-1955422-6  
6-2178575-7  
2345753-1

9-1241961-7

0-2315717-6

0-2315717-7

4.00

0-1241959-4  
0-1241817-4

4.01

2-1241959-4

4.02

4-1241959-4  
2315717-4

4.03

0-1955507-4  
PRELIMINARY

4.04

0-2315717-5

4.05

2-1241817-4

4.06

3-1241817-4  
2322164-1

4.07

0-1241959-5

4.08

0-1241817-5

4.09

2-1241817-5

4.10

0-1241961-6

4.11

2-1241817-7

4.12

1-1241961-8

4.13

2-1241961-8

4.14

3-1241961-7

4.15

4-1241961-7

4.16

5-1955422-7

4.17

6-1241961-7  
1-1241961-9  
0-1955422-6  
6-2178575-7  
2345753-1

4.18

9-1241961-7

4.19

0-2315717-6

4.20

0-2315717-7

5.00

0-1241959-5

5.01

0-1241817-5

5.02

2-1241817-5

5.03

0-1241961-6

5.04

2-1241817-7

5.05

1-1241961-8

5.06

2-1241961-8

5.07

3-1241961-7

5.08

4-1241961-7

5.09

5-1955422-7

5.10

6-1241961-7  
1-1241961-9  
0-1955422-6  
6-2178575-7  
2345753-1

5.11

9-1241961-7

5.12

0-2315717-6

5.13

0-2315717-7

6.00

0-1241959-6

6.01

0-1241817-6

6.02

2-1241817-6

6.03

0-1241961-7

6.04

2-1241817-8

6.05

1-1241961-9

6.06

2-1241961-9

6.07

3-1241961-8

6.08

4-1241961-8

6.09

5-1955422-8

6.10

6-1241961-8  
1-1241961-10  
0-1955422-7  
6-2178575-8  
2345753-2

6.11

9-1241961-8

6.12

0-2315717-7

6.13

0-2315717-8

7.00

0-1241959-7

7.01

0-1241817-7

7.02

2-1241817-7

7.03

0-1241961-8

7.04

2-1241817-9

7.05

1-1241961-10

7.06

2-1241961-10

7.07

3-1241961-9

7.08

4-1241961-9

7.09

5-1955422-9

7.10

6-1241961-9  
1-1241961-11  
0-1955422-8  
6-2178575-9  
2345753-3

7.11

9-1241961-9

7.12

0-2315717-8

7.13

0-2315717-9

8.00

0-1241959-8

8.01

0-1241817-8

8.02

2-1241817-8

8.03

0-1241961-9

8.04

2-1241817-10

8.05

1-1241961-11

8.06

2-1241961-11

8.07

3-1241961-10

8.08

4-1241961-10

8.09

5-1955422-10

8.10

6-1241961-10  
1-1241961-12  
0-1955422-9  
6-2178575-10  
2345753-4

8.11

9-1241961-10

8.12

0-2315717-9

8.13

0-2315717-10

9.00

0-1241959-9

9.01

0-1241817-9

9.02

2-1241817-9

9.03

0-1241961-10

9.04

2-1241817-11

9.05

1-1241961-12

9.06

2-1241961-12

9.07

3-1241961-11

9.08

4-1241961-11

9.09

5-1955422-11

9.10

6-1241961-11  
1-1241961-13  
0-1955422-10  
6-2178575-11  
2345753-5

9.11

9-1241961-11

9.12

0-2315717-10

9.13

0-2315717-11

10.00

0-1241959-10

10.01

0-1241817-10

10.02

2-1241817-10

10.03

0-1241961-11

10.04

2-1241817-12

10.05

1-1241961-13

10.06

2-1241961-13

10.07

3-1241961-12

10.08

4-1241961-12

10.09

5-1955422-12

10.10

6-1241961-12  
1-1241961-14  
0-1955422-11  
6-2178575-12  
2345753-6

10.11

9-1241961-12

10.12

0-2315717-11

10.13

0-2315717-12

11.00

0-1241959-11

11.01

0-1241817-11

11.02

2-1241817-11

11.03

0-1241961-12

11.04

2-1241817-13

11.05

1-1241961-14

11.06

2-1241961-14

11.07

3-1241961-13

11.08

4-1241961-13

11.09

5-1955422-13

11.10

6-1241961-13  
1-1241961-15  
0-1955422-12  
6-2178575-13  
2345753-7

11.11

9-1241961-13

11.12

0-2315717-12

11.13

0-2315717-13

12.00

0-1241959-12

12.01

0-1241817-12

12.02

2-1241817-12

12.03

0-1241961-13

12.04

2-1241817-14

12.05

1-1241961-15

12.06

2-1241961-15

12.07

3-1241961-14

12.08

4-1241961-14

12.09

5-1955422-14

12.10

6-1241961-14  
1-1241961-16  
0-1955422-13  
6-2178575-14  
2345753-8

12.11

9-1241961-14

12.12

0-2315717-13

12.13

0-2315717-14

13.00

0-1241959-13

13.01

0-1241817-13

13.02