

PART CHARACTERISTICS	
NUMBER OF POSITION	ASSEMBLY ITEM NUMBER
02	43025-0208
04	43025-0408
06	43025-0608
08	43025-0808
10	43025-1008
12	43025-1208
14	43025-1408
16	43025-1608
18	43025-1808
20	43025-2008
22	43025-2208
24	43025-2408

CKT. NO.	DIM. 'A'	DIM. 'B'
2	.152/(3.86)	N/A
4	.270/(6.85)	.118/(3.00)
6	.388/(9.85)	.236/(6.00)
8	.506/(12.85)	.354/(9.00)
10	.624/(15.85)	.472/(12.00)
12	.742/(18.85)	.591/(15.00)
14	.860/(21.85)	.709/(18.00)
16	.978/(24.85)	.827/(21.00)
18	1.096/(27.85)	.945/(24.00)
20	1.215/(30.85)	1.063/(27.00)
22	1.333/(33.85)	1.181/(30.00)
24	1.451/(36.85)	1.299/(33.00)

RECEPTACLE #43025-****

PLUG #43020-****

MATED MICRO-FIT CONNECTOR

SEE NOTE 8

LAST CIRCUIT

.076 TYP. (1.93)

.118 (3.00) TYP.

.270 (6.85)

.129 (3.28)

CIRCUIT 1

CIRCUIT 2

2 CIRCUIT HOUSING

4 CIRCUIT PULL TAB GEOMETRY

RECEPTACLE ISO VIEW (8 CIRCUIT SHOWN) (SEE NOTE 9 FOR TESTING)

TERMINAL #43030-****

SECTION 'A'-'A' WITH TERMINAL (SCALE 10x)

TERMINAL LOCKING TABS MUST BE FULLY SEATED TO HOUSING BEFORE MATING WITH OTHER HALF OF CONNECTOR SYSTEM.

SECTION 'B'-'B' (SCALE 10x)

NOTES:

- 1) HOUSING MATERIAL: UNFILLED NYLON, RATED UL 94V-0, COLOR IS BLACK, (LOW HALOGEN)
- 2) FINISH: N/A
- 3) PRODUCT SPECIFICATION: PS-43045
- 4) PACKAGING SPECIFICATION: PK-43025-001
- 5) THIS RECEPTACLE MATES WITH 43020, 43045
- 6) THIS RECEPTACLE TO BE USED WITH MOLEX FEMALE TERMINAL SERIES 43030 OR 46235. SEE SECTION 'A'-'A' FOR TERMINAL ORIENTATION IN HOUSING.
- 7) FOR OVERMOLDING PARAMETERS SEE ENGINEERING SPECIFICATION #SDS-43025-1000
- 8) TOP PULL TABS ARE NOT AVAILABLE ON 2 AND 4 CIRCUIT PARTS
- 9) MOLEX RECOMMENDS THE USE OF MICRO-FIT TEST PLUG, SERIES NO. 44242-**** WHENEVER TESTING IS PERFORMED. TEST PLUGS MUST NOT BE USED FOR MAKE OR BREAK UNDER LOAD. MOLEX DOES NOT RECOMMEND USING STANDARD MATING COMPONENTS FOR HARNESS TESTING PURPOSES.
- 10) SOME HOUSINGS MAY HAVE A SMALL GATE BLEMISH NEAR THE GATE THAT DOES NOT AFFECT FUNCTIONALITY
- 11) HOUSINGS HAVE EITHER AN IDENTIFIER RIB OR ENGRAVED '1' SYMBOL TO INDICATE CIRCUIT #1. IDENTIFIER TYPE IS TOOL DEPENDENT AND NOT SELECTABLE.
- 12) DIMENSION 'A' MEASURED AT DATUM -A-
- 13) THIS PART CONFORMS TO CLASS 'B' REQUIREMENTS OF COSMETIC SPECIFICATION PS-45499-002

REV	DESCRIPTION	DATE	BY	CHKD	APPV
1	REVISED NOTE 1	2016/08/04	CHYDSS/OULES	CHYDSS/OULES	CHYDSS/OULES
2	REVISED NOTE 1	2016/08/04	CHYDSS/OULES	CHYDSS/OULES	CHYDSS/OULES
3	REVISED NOTE 1	2016/08/04	CHYDSS/OULES	CHYDSS/OULES	CHYDSS/OULES

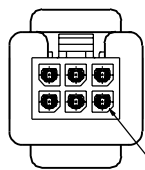
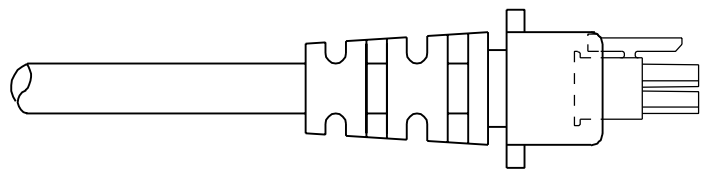
QUALITY SYMBOLS		GENERAL TOLERANCES (UNLESS SPECIFIED)		DIMENSION STYLE		SCALE		DESIGN UNITS		THIRD ANGLE PROJECTION	
		IN/MM		IN/MM							
▽=0	4 PLACES ±---	mm	INCH	▽=0	3 PLACES ±---	mm	INCH	▽=0	2 PLACES ±0.25	mm	INCH
▽=0	2 PLACES ±0.25	mm	INCH	▽=0	1 PLACE ±0.35	mm	INCH	▽=0	0 PLACE ±---	mm	INCH
▽=0	0 PLACE ±---	mm	INCH	▽=0	ANGULAR ±1/2°	mm	INCH	▽=0	DRAFT WHERE APPLICABLE MUST REMAIN WITHIN DIMENSIONS	mm	INCH

DRAWN BY		DATE		TITLE		SHEET NO.	
MKIPPER		2008/01/22		MICRO-FIT (3.0) 2 THRU 24 CIRCUIT RECEPTACLE, LOW HALOGEN		1 OF 1	
CHECKED BY		DATE		DOCUMENT NO.		SHEET NO.	
SSOUSEK		2008/01/25		SD-43025-001		1 OF 1	
APPROVED BY		DATE		MATERIAL NO.		SEE CHART	
FSMITH		2016/08/25		SEE CHART		SEE CHART	

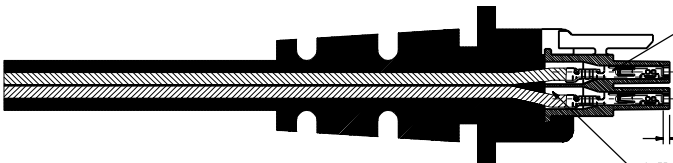
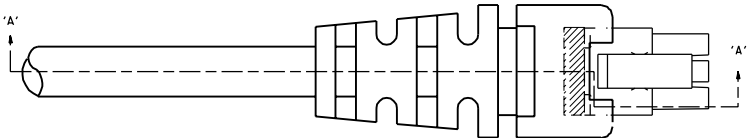
10_frame_0_P_AM.T
Rev. G 2012/01/11

NOTES:

- 1) OVERMOLDED MATERIAL SHOULD NOT ENCAPSULATE THE TERMINAL IN AND AROUND THE WIRE CRIMP AREA.
- 2) TERMINALS MUST BE CENTERED AND PERPENDICULAR INSIDE THE RECEPTACLE HOUSING BEFORE AND AFTER OVERMOLDING.
- 3) DEVICE USED TO CENTER TERMINALS MUST NOT EXCEED .020 SQUARE IN ORDER TO PREVENT TERMINAL DEFORMATION.
- 4) OVERMOLD TOOLING MUST NOT DAMAGE INTERNAL OR EXTERNAL FEATURES OF CABLE ASSEMBLY.
- 5) THE OVERMOLDING TEMPERATURES DURING PROCESSING MUST NOT EXCEED 320°F
- 6) REMOVAL OF CABLE ASSEMBLY FROM THE TOOLING MUST NOT IN ANY WAY DAMAGE THE SUPPLIED COMPONENTS.
- 7) MOLEX IS RESPONSIBLE ONLY FOR COMPONENTS SUPPLIED TO THE OVERMOLDER, BUT NOT FOR NONCONFORMANCES INDUCED DURING THE OVERMOLDING PROCESS, SUCH AS OVERMOLD MATERIAL IN THE CONTACT AREA, TERMINALS THAT ARE EITHER OUT OF CENTER OR LACK OF TERMINAL MOBILITY AFTER BEING OVERMOLDED, AND ANY DEFORMATION TO TERMINALS OR HOUSINGS IN GENERAL.



TERMINALS MUST BE CENTERED IN RECEPTACLE PRIOR TO OVERMOLDING



TERMINALS SHOULD BE FULLY SEATED (APPROXIMATELY .030/(0.76) FROM TOP OF SILOS) BEFORE OVERMOLDING

.030 (0.76) REF.

OVERMOLD MATERIAL SHOULD NOT PROCEED PASS WIRE CRIMP

SECTION 'A'- 'A'

B	REVISED PER EOMP 10-0172	BAP
A	REVISED PER EOMP 10-0130	BAP
REV. NO.	REV. DATE	REV. DATE
1	06/23/94	06/23/94

DIMENSIONS SHOWN IN PARENTHESES ARE IN INCHES		REVISE ONLY ON CAD SYSTEM	
TYPICAL DIMENSIONS		TITLE	
TYPICAL DIMENSIONS		MICRO-FIT (3.0)	
TYPICAL DIMENSIONS		OVERMOLDING SPECIFICATIONS	
TYPICAL DIMENSIONS		MOLEX INCORPORATED	
TYPICAL DIMENSIONS		PART NO. SDES-43025-1000	
TYPICAL DIMENSIONS		REV. DATE	
TYPICAL DIMENSIONS		REV. DATE	