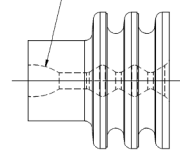


SEAL/MYLAR ASSEMBLY DETAIL

NOTES

- 1. THE MYLAR TAPE IS ONLY A CARRIER USED AS A PROCESS AID AND IS NOT PART OF THE FINAL HARNESS ASSEMBLY.
- 2. WHEN PARTS ARE SHIPPED, THEY MUST BE PACKED IN PLASTICS BAGS OR SHIPPING CONTAINERS MUST BE LINED WITH PLASTIC LINERS. BAGS OR LINERS MUST BE SEALED TO AVOID ENTRY OF FOREIGN MATTER.

OPTIONAL CONSTRUCTION 1  
TYPE 103 ONLY



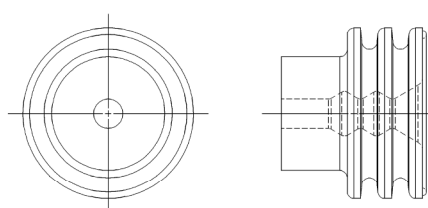
SYMBOL DEFINITION	
A DIMENSION WITHOUT AN INSPECTION REPORT SYMBOL DOES NOT REQUIRE INSPECTION. IT MAY BE CONTROLLED ON THE INDIVIDUAL COMPONENT DRAWING.	
TOTAL NO OF INSPECTIONS REQUIRED	5
LAST NO. USED	7

MISSING SYMBOLS

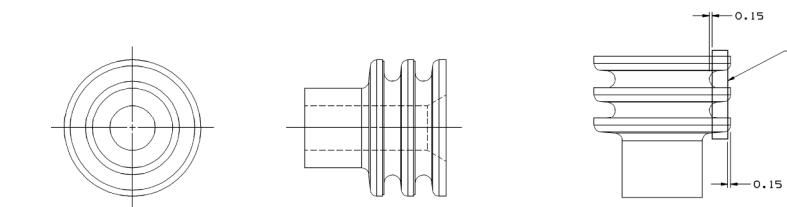
4-5
-----

REVISION HISTORY				AUTH		DATE	
DATE	REV	BY	CHK	DATE	REV	BY	CHK
150099	R	001	-	CLEARED REV COLUMN & 12146012 - OBSOLETE	990003	JHN	JWM/LRT
27JAN00	R	002	-	15324980 - 85 - RELEASED	000005	ALZ	DMC RH
07NOV00	R	003	-	15324980 - 85 - REVISED	202978	ALZ	EXP JR
10MAY04	R	04	-	12010293, 12015193, 12015323, 12041351 & 12089679 REVISED PER RIN EMD 80LTS ALL PARTS - UPDATED MATERIAL SPECS	251237	RH	MR MR
21JUN04	R	05	-	ADDED "ALTERNATE MATERIAL SPECIFICATION" TO CHART. ADDED PART NUMBERS 15497745-15497746, 15497754-15497755, AND 15497756-15497757.	256100	LLJ	LLJ MR
09MAY05	R	06	-	12010293, 12015193, 12015284, 12015323, 12015359-60, 12015899, 12034365, 12041351-52, 12089444, 12089679, 15497745-46 AND 15497754-57 - RESTRICTED 15324980-85 - MAT'L SPEC WAS M4M69; ALL ACTIVE PARTS - REVISED NOTES AND REMOVED Ø C DIM FOR TYPE 102	265538	JBD	JAM MR
01FEB06	R	07	-	UPDATED POW ATTRIBUTES	276580	TS	TS EAH
22FEB06	R	08	-	15324980-85 - MAT'L SPEC WAS M4M69	276914	JBD	JWM/MR
03JUN06	R	09	-	ALL ACTIVE PARTS - UPDATED MAT'L SPEC; ADDED ALTERNATE MAT'L SPEC, OPTIONAL CONSTRUCTION 1 & 2 VIEWS, SEALING RIBS VIEWS, OVERALL LENGTH NOTE & SEALING SURFACE NOTE AND DIMS (2PLCS); REMOVED OPTIONAL CONSTRUCTION VIEWS AND REVISED TOLERANCE DIM Ø	283299	JBD	FRG/MR
03OCT06	R	10	-	ALL ACTIVE PARTS - REMOVED INSPECTION SYMBOLS NUMBER 4 & 5; REVISED PROCESS SENSITIVE DIM AND SEALING RIBS LABEL	284959	JBD	FRG/MR
08JAN07	R	11	-	15363991, 15363980, 15338470 & 10717459 - ADDED PART NUMBERS AS W/LR ASSEMBLIES	400035	JTV	FRG/MR

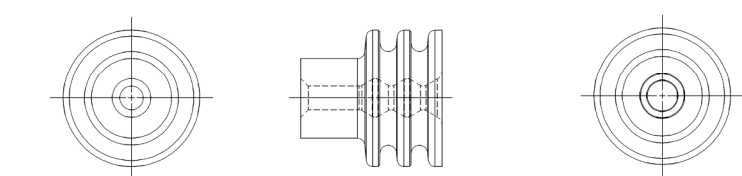
OPTIONAL CONSTRUCTION 2  
(ANTI-STICK RING)



OPTIONAL CONSTRUCTION 3  
THIS IS THE PREFERRED CONSTRUCTION FOR NEW TOOL BUILD



TYPE 102  
SAME AS TYPE 101  
EXCEPT FOR INTERNAL SEALING FEATURES

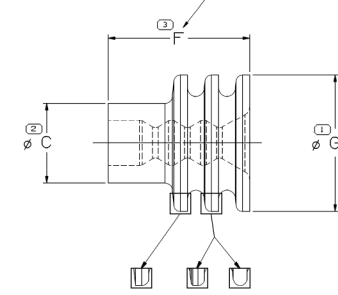


TYPE 103  
SAME AS TYPE 101  
EXCEPT FOR INTERNAL SEALING FEATURES

TYPE 101

SEALING RIBS MUST BE FREE OF SINKS, VOIDS, KNOT LINES AND FLASH, IN THE AREA SHOWN ALL AROUND PART.  
SEE VPS A-121 FOR ADDITIONAL INFORMATION

OVERALL LENGTH WILL INCREASE BY 0.2 MM (NOMINAL) IF OPTIONAL CONSTRUCTION 3 IS USED



SEALING RIBS MAY DIFFER AS SHOWN

NOTES

- 1. UNLESS OTHERWISE SPECIFIED AND/OR INDICATED:  
DIMENSIONS ARE TO FACE OF VIEW SHOWN AND AUTOMATICALLY ROUNDED BY COMPUTER FOR INSPECTION (SEE MATH MODEL FOR PRECISE DIMENSIONS). FOR ALL OTHER DIMENSIONS NOT SHOWN BUT REQUIRED FOR TOOL BUILD, SEE MATH MODEL FOR PRECISE TOOL PATH DATA.
- 2. PARTS ARE TO BE PACKAGED IN SEALED PLASTIC BAGS, GROSS WEIGHT INCLUDING CARTON IS NOT TO EXCEED 34 POUNDS.
- 3. TO IMPROVE SEAL PROCESSING ON SLIPPERY OR SMOOTH CABLE INSULATION, THE APPLICATION ENGINEER MAY SPECIFY THE NEXT SMALLER SEAL SIZE P/N IN PLACE OF THE INDICATED SEAL FOR THE "CABLE O.D." LISTED IN THE CHART.
- 4. FOR P/N'S 12041351, 12041352 AND 15324984 ONLY, THESE SEALS ARE RECOMMENDED FOR USE ON 1 MMF THIN WALL CABLE 0.8 MMF REGULAR WALL TYPE CABLE.

PART NO	REV	N/P	STATUS	PART NO	REV	N/P	STATUS	TYPE	MATERIAL SPECIFICATION	COLOR (REF ONLY)	MATERIAL ALTERNATE	CABLE O.D. ±0.05 SEE NOTE 3	C	F	G	CAVITY 1.0.	VOL	EQUIVALENT CABLE SEAL
15497757	01	AC	RESTRICTED	15497756	01	AC	RESTRICTED	103	M2261009	PPL	-	2.15-1.6	4.25	7.5	7.25	6.7	0.164	12089679
15497759	01	AC	RESTRICTED	15497754	01	AC	RESTRICTED	102	M2261012	GRA	-	3.49-2.81	4.25	7.5	7.25	6.7	0.142	12010293
15497746	01	AC	RESTRICTED	15497745	01	AC	RESTRICTED	101	M2261001	GRN	-	2.85-2.03	4.25	7.5	7.25	6.7	0.15	12015323
15338470	B1	-	-	15324985	01	AH	-	103	M3466039	PPL	M3466039	2.15-1.6	4.25	7.5	7.25	6.7	0.164	12089679
-	-	-	-	15324984	01	AH	-	102	M3466038	TAN	M3466038	2.42-2.03	4.25	7.5	7.25	6.7	0.162	12041351
-	-	-	-	15324983	01	AH	-	103	M3466037	DK RD	-	1.71-1.29	4.25	7.5	7.25	6.7	0.171	12015899
15363980	01	AA	-	15324982	01	AG	-	101	M3466007	GRN	M3466007	2.85-2.03	4.25	7.5	7.25	6.7	0.15	12015323
10717640	01	AA	-	15324981	01	AG	-	102	M3466008	BLU	M3466008	4.3-3.45	4.25	7.5	7.25	6.7	0.122	12015193
15363991	01	AA	-	15324980	01	AG	-	102	M3466003	GRA	M3466003	3.49-2.81	4.25	7.5	7.25	6.7	0.142	12010293
12146012	A1	-	OBSELETE	12129930	C3	-	-	101	M4398005	ORN	-	2.85-2.03	4.15	7.3	7.25	6.7	0.142	12010293
15089444	B3	-	RESTRICTED	12089679	02	AD	RESTRICTED	103	M3471039	PFL	M2261009	2.15-1.6	4.25	7.5	7.25	6.7	0.164	15324985
-	-	-	-	12089443	B2	-	OBSELETE	103	M2261006	YEL	-	2.15-1.6	4.25	7.5	7.25	6.7	-	-
12041352	A3	-	RESTRICTED	12041351	02	AD	RESTRICTED	102	M3471038	TAN	M2261029	2.42-2.03	4.25	7.5	7.25	6.7	0.162	15324984
12034365	A3	-	RESTRICTED	12015899	06	-	RESTRICTED	103	M3471037	DK RD	M2261019	1.71-1.29	4.25	7.5	7.25	6.7	0.171	15324983
12015284	A3	-	RESTRICTED	12015323	04	AD	RESTRICTED	101	M3471007	GRN	M2261001	2.85-2.03	4.25	7.5	7.25	6.7	0.15	15324982
12015360	A3	-	RESTRICTED	12015193	03	AD	RESTRICTED	102	M3471008	BLU	M2261008	4.3-3.45	4.25	7.5	7.25	6.7	0.122	15324981
12015359	A3	-	RESTRICTED	12010293	11	AD	RESTRICTED	102	M3471003	GRA	M2261012	3.49-2.81	4.25	7.5	7.25	6.7	0.142	15324980
-	-	-	-	12010117	B2	-	OBSELETE	101	M2261005	ORN	-	2.8-2.03	4.25	8	7.6	6.7	-	-

DELPHI PART DRAWING

DATE: 12010295

SCALE: 10:1

1 OF 2

1 OF 6

11

DELPHI PART DRAWING

DELPHI PACKAGED ELECTRIC SYSTEMS

DATE: 12010295

SCALE: 10:1

1 OF 2

1 OF 6

11