



DOUBLE POLE SWITCH

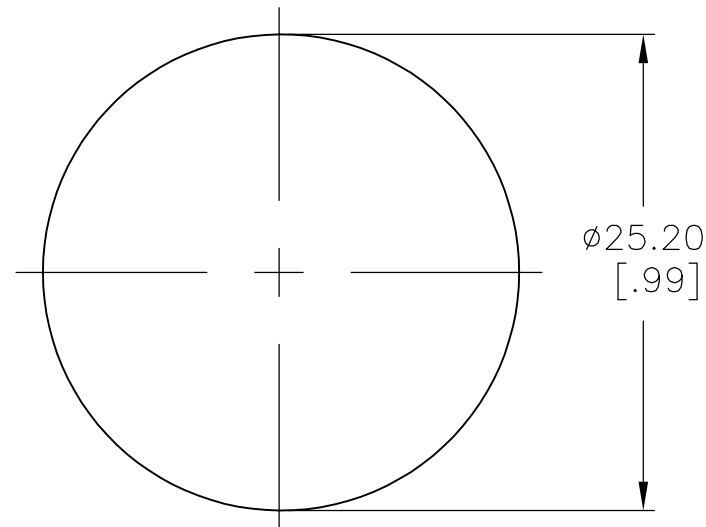
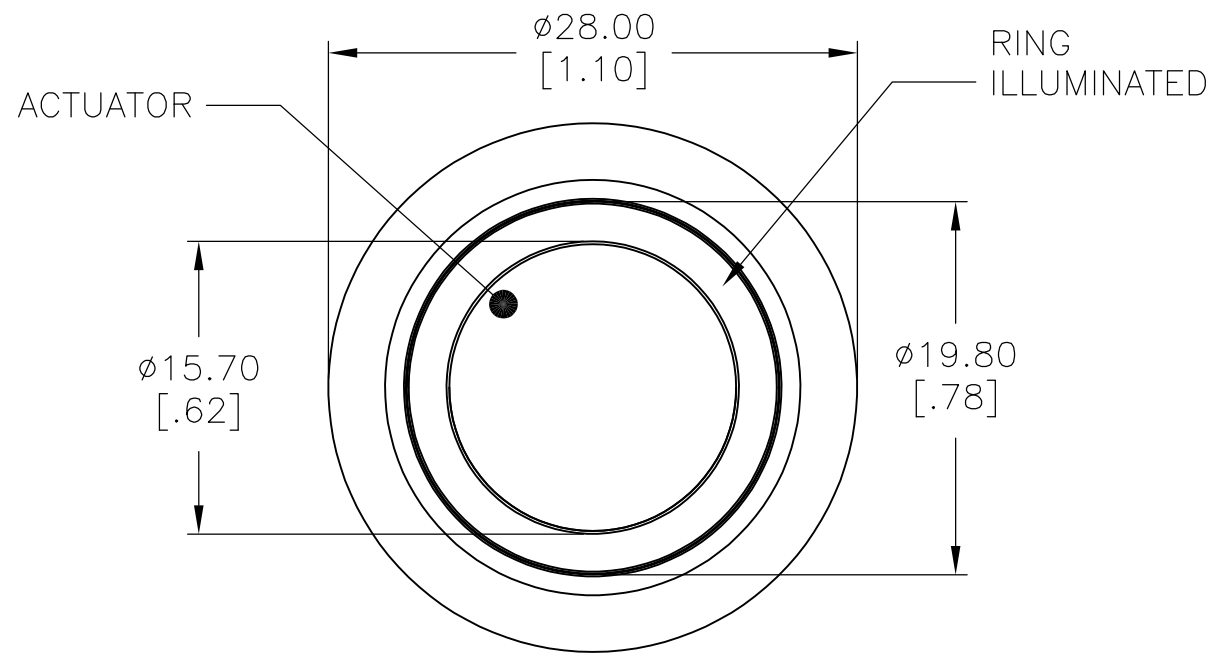
REVISIONS					
P	LTR	DESCRIPTION	DATE	DWN	APVD
-	-	SEE SHEET 1	-	-	-

D

C

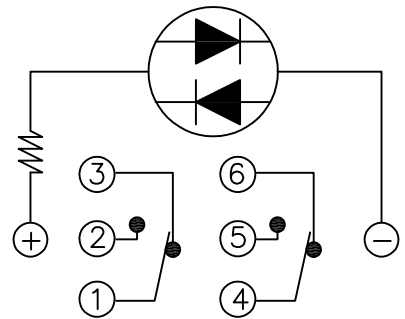
B

A

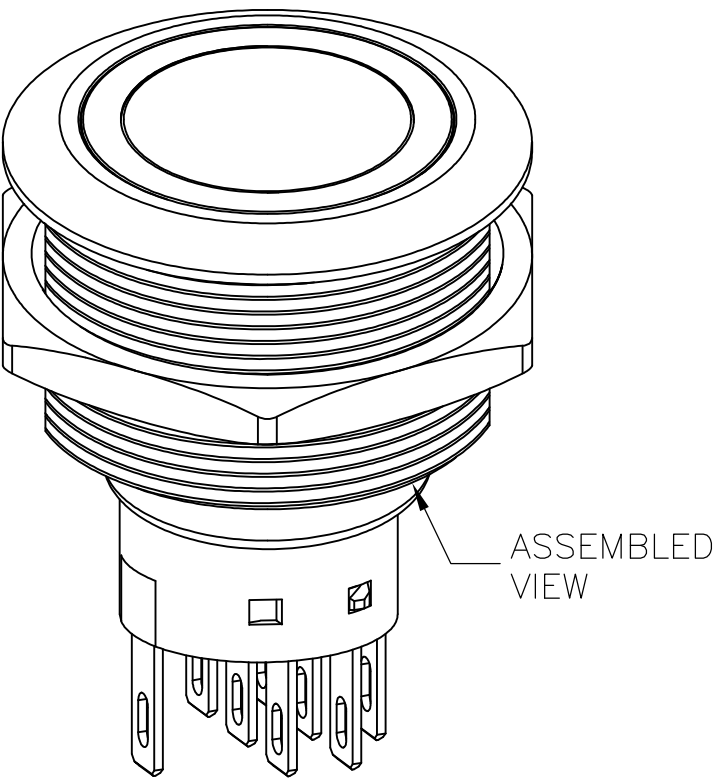
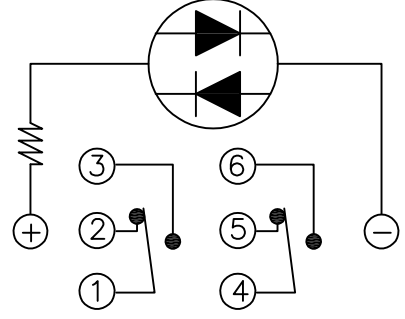


PANEL CUTOUT  
MAX.PANEL THICKNESS: 10.0[.39]

POSITION 1



POSITION 2

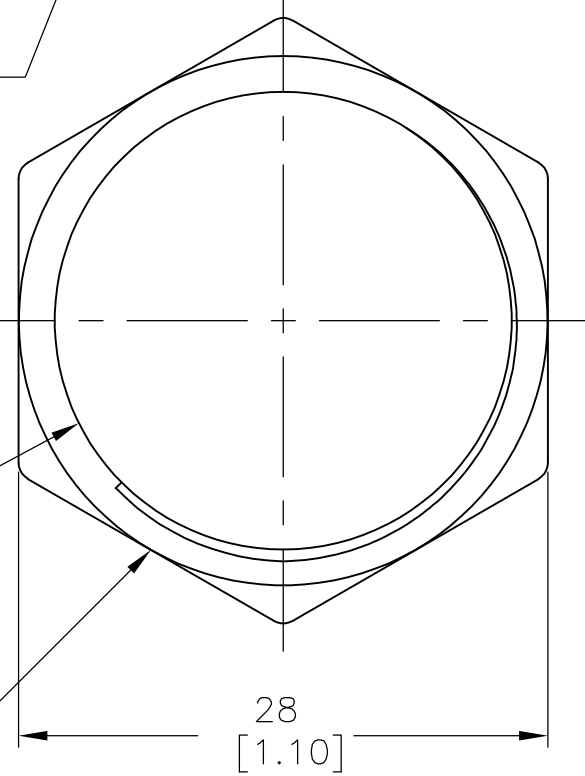
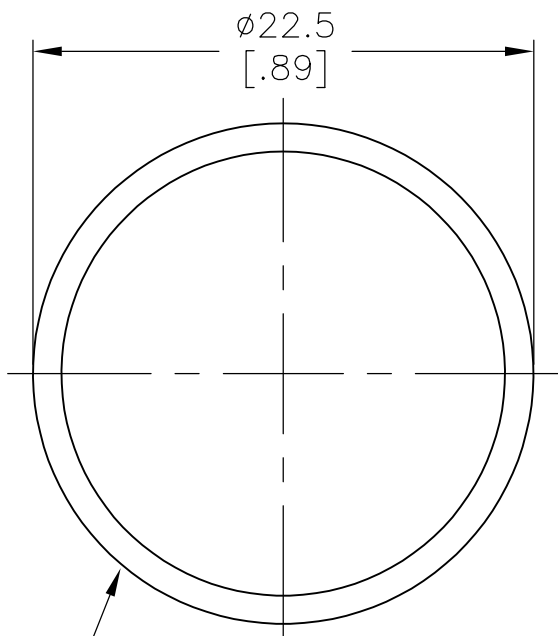
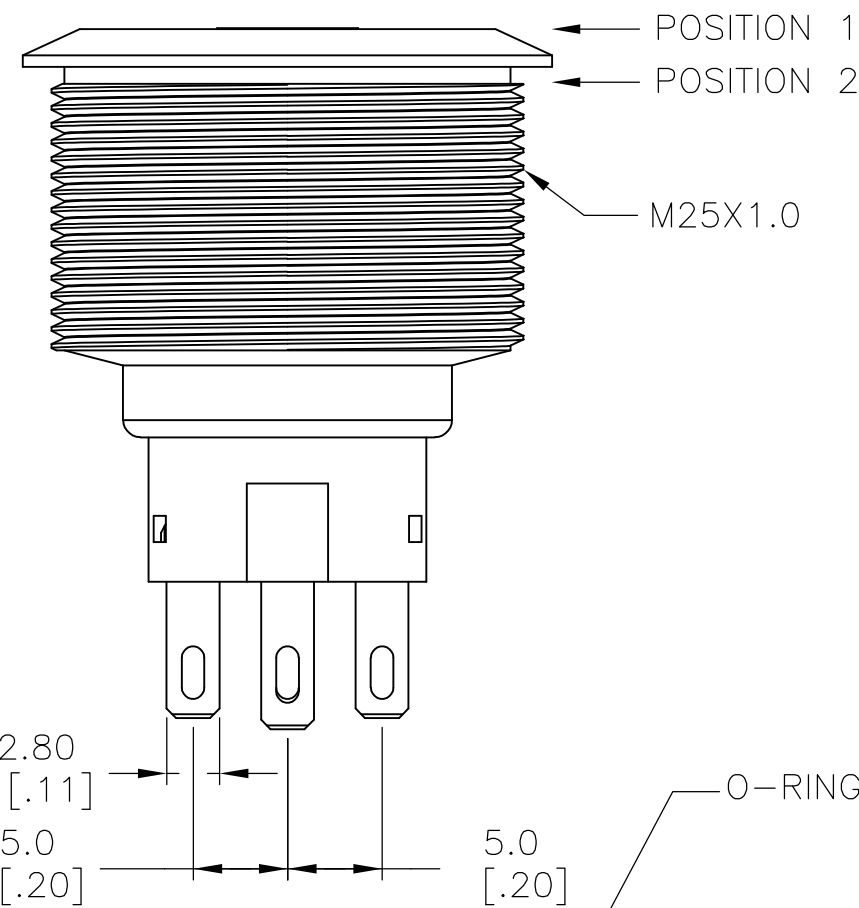
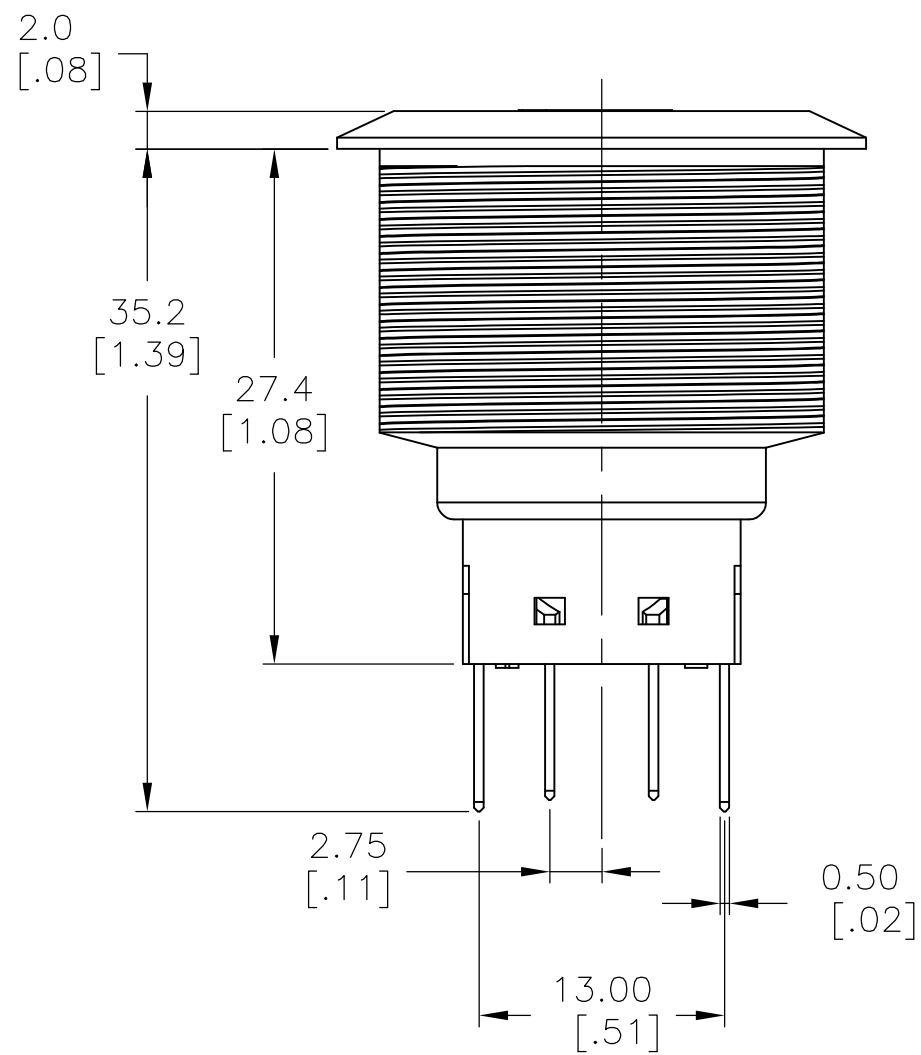


D

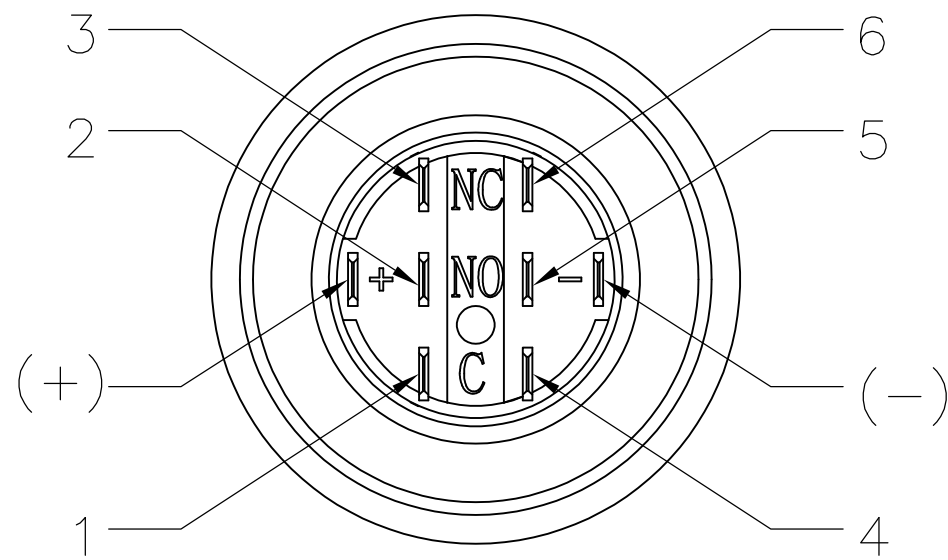
C

B

A



EXPLODED VIEW



THIS DRAWING IS A CONTROLLED DOCUMENT.			DWN 15MAR2017 SHIVAKUMAR S S		TE Connectivity		
DIMENSIONS: mm [INCHES]			CHK 15MAR2017 SANJAY SHINDIKAR	APVD 15MAR2017 SANJAY SHINDIKAR			
TOLERANCES UNLESS OTHERWISE SPECIFIED:			PRODUCT SPEC		NAME		
0 PLC ± -			APPLICATION SPEC		ANTI-VANDAL SWITCH 25mm, MOVING RING LED		
1 PLC ± 0.4[.016]			WEIGHT 0		SIZE A2	CAGE CODE 00779	DRAWING NO C=2317656
2 PLC ± 0.25[.010]			CUSTOMER DRAWING		SCALE 1:1	SHEET 2 OF 3	REV A
3 PLC ± -							
4 PLC ± -							
ANGLES ± 2°							
FINISH -							

4		3		2		1					
THIS DRAWING IS UNPUBLISHED.		RELEASED FOR PUBLICATION				REVISIONS					
© COPYRIGHT - By -		ALL RIGHTS RESERVED.				P	LTR	DESCRIPTION	DATE	DWN	APVD
							-	SEE SHEET 1	-	-	-