

MATERIALS AND FINISHES

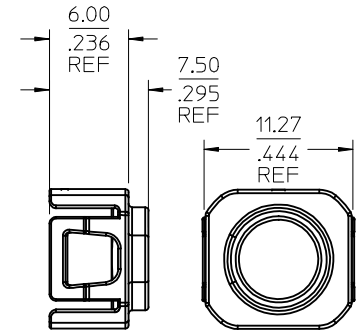
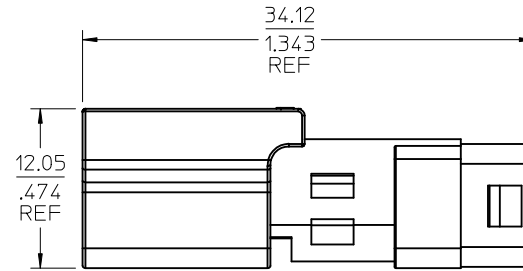
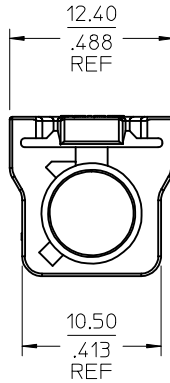
SMB (73404-3560): SEE SD-73404-356

SHROUD: SPS/PA66
COLOR SEE SHEET 2

END CAP, ISL: SPS/PA66
COLOR BLACK

CABLE SEAL: A4005 SILICONE RUBBER
40 DUROMETER. COLOR GREEN

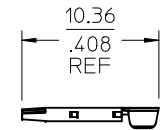
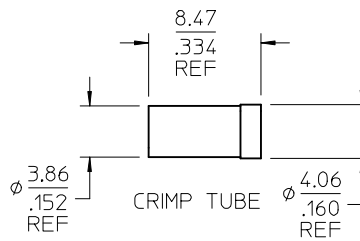
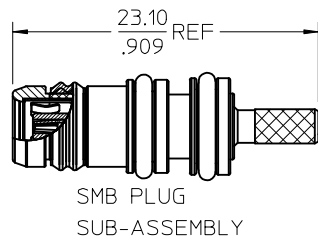
CRIMP TUBE: COPPER
PLATED TIN (100μ-in MIN) OVER
NICKEL (100μ-in MIN)



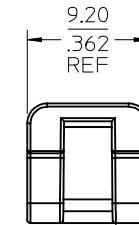
FAKRA PLUG SHROUD
(CODE F SHOWN)

CABLE SEAL

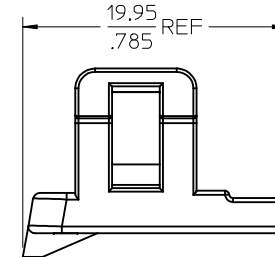
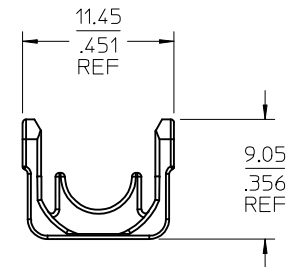
END CAP



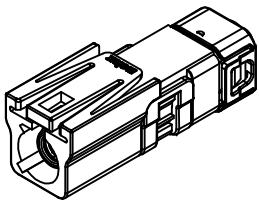
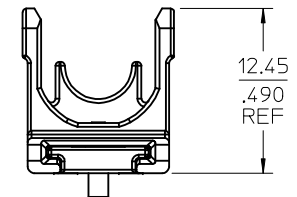
CONTACT
(SHOWN LOOSE
COMES ON T&R)



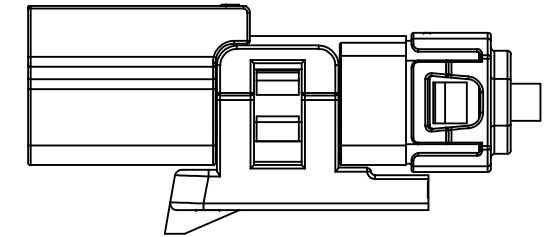
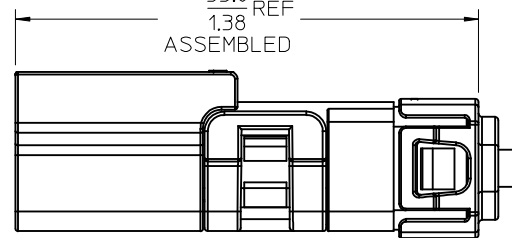
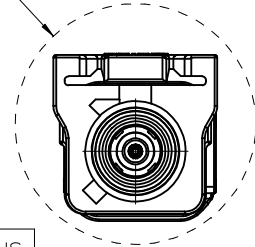
ISL NO
CLIP SLOT



ISL WITH
7mm CLIP SLOT




18.20
.717
PASS-THRU

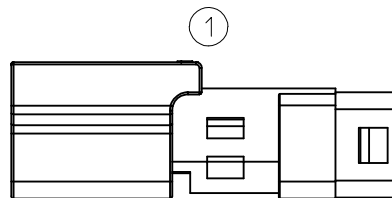


SEE SHEET 2 FOR SHROUD COLORS & KEYS
SEE SHEET 3-4 FOR ORDERING SCHEME

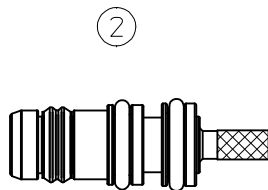
AS-89675-452	ASSEMBLY INSTRUCTIONS
SPECIFICATION	DESCRIPTION

CHG: UPDATED POST PV	EC NO: URF:2017-0388 2017/05/15 DRWN:SSHAH 2017/05/17 CHKD:MEIER 2017/05/23 APPR:AROBERTSON	DESCRIPTION	QUALITY SYMBOLS	GENERAL TOLERANCES (UNLESS SPECIFIED)		DIMENSION STYLE		SCALE	DESIGN UNITS	 THIRD ANGLE PROJECTION		
						MM/IN			METRIC			
					mm	INCH	DRAWN BY	DATE	TITLE		FAKRA PLUG SEALED FOR RG174 FAKRA-PC, EWR-5416	
				4 PLACES	± ---	± ---	AROBERTSON	2014/11/17				
				3 PLACES	± ---	± ---	CHECKED BY	DATE				
				2 PLACES	± ---	± ---	SSS	2014/11/17				
				1 PLACE	± ---	± ---	APPROVED BY	DATE				
				0 PLACE	± ---	± ---	AROBERTSON	2015/04/24	DOCUMENT NO.		SHEET NO.	
				ANGULAR ± 2 °		MATERIAL NO.						
				DRAFT WHERE APPLICABLE MUST REMAIN WITHIN DIMENSIONS		SEE TABLE						
REV	D	REV				SIZE	THIS DRAWING CONTAINS INFORMATION THAT IS PROPRIETARY TO MOLEX INCORPORATED AND SHOULD NOT BE USED WITHOUT WRITTEN PERMISSION					

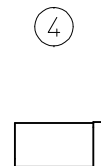
	13	12	11	10	9	8	7	6	5	4	3	2	1																																																																	
J	<div><div></div><div>CODE A</div></div> <div><div></div><div>CODE B</div></div> <div><div></div><div>CODE C</div></div> <div><div></div><div>CODE D</div></div> <div><div></div><div>CODE E</div></div> <div><div></div><div>CODE F</div></div> <div><div></div><div>CODE G</div></div> <div><div></div><div>CODE H</div></div> <div><div></div><div>CODE I</div></div>													J																																																																
I														I																																																																
H	<div><div></div><div>CODE K</div></div> <div><div></div><div>CODE Z</div></div> <div><div></div><div>CODE L</div></div> <div><div></div><div>CODE M</div></div> <div><div></div><div>CODE N</div></div>													H																																																																
G														G																																																																
F	<table><tr><td>89558-9183</td><td>N</td><td>PASTEL GREEN</td></tr><tr><td>89558-9182</td><td>M</td><td>PASTEL ORANGE</td></tr><tr><td>89558-9181</td><td>L</td><td>CARMINE RED</td></tr><tr><td>89558-9180</td><td>Z</td><td>WATER BLUE</td></tr><tr><td>89558-9179</td><td>K</td><td>CURRY YELLOW</td></tr><tr><td>89558-9178</td><td>I</td><td>BEIGE</td></tr><tr><td>89558-9177</td><td>H</td><td>VIOLET</td></tr><tr><td>89558-9176</td><td>G</td><td>GRAY</td></tr><tr><td>89558-9175</td><td>F</td><td>BROWN</td></tr><tr><td>89558-9174</td><td>E</td><td>GREEN</td></tr><tr><td>89558-9173</td><td>D</td><td>BORDEAUX VIOLET</td></tr><tr><td>89558-9172</td><td>C</td><td>BLUE</td></tr><tr><td>89558-9171</td><td>B</td><td>CREAM WHITE</td></tr><tr><td>89558-9170</td><td>A</td><td>BLACK</td></tr><tr><td>SHROUD NO.</td><td>KEY CODE</td><td>COLOR</td></tr><tr><td></td><td></td><td></td></tr></table>													89558-9183	N	PASTEL GREEN	89558-9182	M	PASTEL ORANGE	89558-9181	L	CARMINE RED	89558-9180	Z	WATER BLUE	89558-9179	K	CURRY YELLOW	89558-9178	I	BEIGE	89558-9177	H	VIOLET	89558-9176	G	GRAY	89558-9175	F	BROWN	89558-9174	E	GREEN	89558-9173	D	BORDEAUX VIOLET	89558-9172	C	BLUE	89558-9171	B	CREAM WHITE	89558-9170	A	BLACK	SHROUD NO.	KEY CODE	COLOR				F																
89558-9183	N	PASTEL GREEN																																																																												
89558-9182	M	PASTEL ORANGE																																																																												
89558-9181	L	CARMINE RED																																																																												
89558-9180	Z	WATER BLUE																																																																												
89558-9179	K	CURRY YELLOW																																																																												
89558-9178	I	BEIGE																																																																												
89558-9177	H	VIOLET																																																																												
89558-9176	G	GRAY																																																																												
89558-9175	F	BROWN																																																																												
89558-9174	E	GREEN																																																																												
89558-9173	D	BORDEAUX VIOLET																																																																												
89558-9172	C	BLUE																																																																												
89558-9171	B	CREAM WHITE																																																																												
89558-9170	A	BLACK																																																																												
SHROUD NO.	KEY CODE	COLOR																																																																												
E														E																																																																
D														D																																																																
C														C																																																																
B	<table><tr><td rowspan="4">CHG: SEE SHEET 1 EC NO: URF2017-0388 2017/05/15 DRWN:SSHAH CHKD:LMEIER APPR:AROBERTSON 2017/05/23</td><td rowspan="4">QUALITY SYMBOLS ▽=0 ▽=0 ▽=0</td><td colspan="2">GENERAL TOLERANCES (UNLESS SPECIFIED)</td><td colspan="2">DIMENSION STYLE MM/IN</td><td>SCALE</td><td>DESIGN UNITS METRIC</td><td rowspan="4">THIRD ANGLE PROJECTION</td></tr><tr><td colspan="2"><table><tr><td></td><td>mm</td><td>INCH</td></tr><tr><td>4 PLACES</td><td>± ---</td><td>± ---</td></tr><tr><td>3 PLACES</td><td>± ---</td><td>± ---</td></tr><tr><td>2 PLACES</td><td>± ---</td><td>± ---</td></tr><tr><td>1 PLACE</td><td>± ---</td><td>± ---</td></tr><tr><td>0 PLACE</td><td>± ---</td><td>± ---</td></tr></table></td><td colspan="2"><table><tr><td>DRAWN BY</td><td>DATE</td></tr><tr><td>AROBERTSON</td><td>2014/11/17</td></tr><tr><td>CHECKED BY</td><td>DATE</td></tr><tr><td>SSS</td><td>2014/11/17</td></tr><tr><td>APPROVED BY</td><td>DATE</td></tr><tr><td>AROBERTSON</td><td>2015/04/24</td></tr></table></td><td>TITLE</td><td></td></tr><tr><td colspan="6">ANGULAR ± 2 °</td><td>MATERIAL NO.</td><td>DOCUMENT NO.</td><td></td></tr><tr><td colspan="6">DRAFT WHERE APPLICABLE MUST REMAIN WITHIN DIMENSIONS</td><td colspan="2">SEE TABLE</td><td>SD-73403-037</td><td>SHEET NO. 2 OF 4</td></tr></table>													CHG: SEE SHEET 1 EC NO: URF2017-0388 2017/05/15 DRWN:SSHAH CHKD:LMEIER APPR:AROBERTSON 2017/05/23	QUALITY SYMBOLS ▽=0 ▽=0 ▽=0	GENERAL TOLERANCES (UNLESS SPECIFIED)		DIMENSION STYLE MM/IN		SCALE	DESIGN UNITS METRIC	THIRD ANGLE PROJECTION	<table><tr><td></td><td>mm</td><td>INCH</td></tr><tr><td>4 PLACES</td><td>± ---</td><td>± ---</td></tr><tr><td>3 PLACES</td><td>± ---</td><td>± ---</td></tr><tr><td>2 PLACES</td><td>± ---</td><td>± ---</td></tr><tr><td>1 PLACE</td><td>± ---</td><td>± ---</td></tr><tr><td>0 PLACE</td><td>± ---</td><td>± ---</td></tr></table>			mm	INCH	4 PLACES	± ---	± ---	3 PLACES	± ---	± ---	2 PLACES	± ---	± ---	1 PLACE	± ---	± ---	0 PLACE	± ---	± ---	<table><tr><td>DRAWN BY</td><td>DATE</td></tr><tr><td>AROBERTSON</td><td>2014/11/17</td></tr><tr><td>CHECKED BY</td><td>DATE</td></tr><tr><td>SSS</td><td>2014/11/17</td></tr><tr><td>APPROVED BY</td><td>DATE</td></tr><tr><td>AROBERTSON</td><td>2015/04/24</td></tr></table>		DRAWN BY	DATE	AROBERTSON	2014/11/17	CHECKED BY	DATE	SSS	2014/11/17	APPROVED BY	DATE	AROBERTSON	2015/04/24	TITLE		ANGULAR ± 2 °						MATERIAL NO.	DOCUMENT NO.		DRAFT WHERE APPLICABLE MUST REMAIN WITHIN DIMENSIONS						SEE TABLE		SD-73403-037	SHEET NO. 2 OF 4	B
CHG: SEE SHEET 1 EC NO: URF2017-0388 2017/05/15 DRWN:SSHAH CHKD:LMEIER APPR:AROBERTSON 2017/05/23	QUALITY SYMBOLS ▽=0 ▽=0 ▽=0	GENERAL TOLERANCES (UNLESS SPECIFIED)		DIMENSION STYLE MM/IN		SCALE	DESIGN UNITS METRIC	THIRD ANGLE PROJECTION																																																																						
		<table><tr><td></td><td>mm</td><td>INCH</td></tr><tr><td>4 PLACES</td><td>± ---</td><td>± ---</td></tr><tr><td>3 PLACES</td><td>± ---</td><td>± ---</td></tr><tr><td>2 PLACES</td><td>± ---</td><td>± ---</td></tr><tr><td>1 PLACE</td><td>± ---</td><td>± ---</td></tr><tr><td>0 PLACE</td><td>± ---</td><td>± ---</td></tr></table>			mm	INCH	4 PLACES		± ---	± ---	3 PLACES	± ---	± ---			2 PLACES	± ---	± ---	1 PLACE	± ---	± ---		0 PLACE	± ---	± ---	<table><tr><td>DRAWN BY</td><td>DATE</td></tr><tr><td>AROBERTSON</td><td>2014/11/17</td></tr><tr><td>CHECKED BY</td><td>DATE</td></tr><tr><td>SSS</td><td>2014/11/17</td></tr><tr><td>APPROVED BY</td><td>DATE</td></tr><tr><td>AROBERTSON</td><td>2015/04/24</td></tr></table>		DRAWN BY	DATE	AROBERTSON	2014/11/17	CHECKED BY	DATE	SSS	2014/11/17	APPROVED BY	DATE	AROBERTSON	2015/04/24	TITLE																																						
			mm	INCH																																																																										
		4 PLACES	± ---	± ---																																																																										
3 PLACES	± ---	± ---																																																																												
2 PLACES	± ---	± ---																																																																												
1 PLACE	± ---	± ---																																																																												
0 PLACE	± ---	± ---																																																																												
DRAWN BY	DATE																																																																													
AROBERTSON	2014/11/17																																																																													
CHECKED BY	DATE																																																																													
SSS	2014/11/17																																																																													
APPROVED BY	DATE																																																																													
AROBERTSON	2015/04/24																																																																													
ANGULAR ± 2 °						MATERIAL NO.	DOCUMENT NO.																																																																							
DRAFT WHERE APPLICABLE MUST REMAIN WITHIN DIMENSIONS						SEE TABLE		SD-73403-037	SHEET NO. 2 OF 4																																																																					
A														A																																																																
tb_frame_C_P_AM_T Rev. G 2012/01/11																																																																														
	12	11	10	9	8	7	6	5	4	3	2	1																																																																		



SHROUD



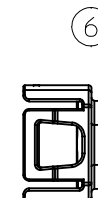
SMB SUB-ASSEMBLY

CONTACT
(T&R)

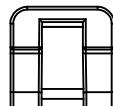
CRIMP TUBE



CABLE
SEAL



END
CAP



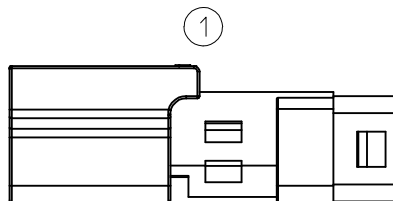
ISL NO CLIP SLOT

NOTES:

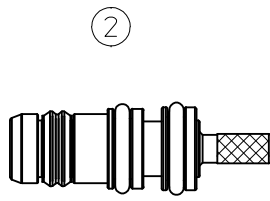
1. ITEM 2 TO BE TRAY PACKED.
2. ALL ITEMS MAY BE BAGGED INDIVIDUALLY TOGETHER WHEN SOLD AS 73403-0XXX ASSEMBLY NUMBER.
3. ITEMS 1/3/4/5/6/7 MAY BE INDIVIDUALLY BULK PACKED. BULK PACKAGE QUANTITIES MUST NOT INDUCE ANY DAMAGE TO PARTS.

73403-0383	N	PASTEL GREEN	89558-9183	73404-3560	89538-0251	89558-8172	89558-8000	89558-9210	89558-8150
73403-0382	M	PASTEL ORANGE	89558-9182	73404-3560	89538-0251	89558-8172	89558-8000	89558-9210	89558-8150
73403-0381	L	CARMINE RED	89558-9181	73404-3560	89538-0251	89558-8172	89558-8000	89558-9210	89558-8150
73403-0380	Z	WATER BLUE	89558-9180	73404-3560	89538-0251	89558-8172	89558-8000	89558-9210	89558-8150
73403-0379	K	CURRY YELLOW	89558-9179	73404-3560	89538-0251	89558-8172	89558-8000	89558-9210	89558-8150
73403-0378	I	BEIGE	89558-9178	73404-3560	89538-0251	89558-8172	89558-8000	89558-9210	89558-8150
73403-0377	H	VIOLET	89558-9177	73404-3560	89538-0251	89558-8172	89558-8000	89558-9210	89558-8150
73403-0376	G	GRAY	89558-9176	73404-3560	89538-0251	89558-8172	89558-8000	89558-9210	89558-8150
73403-0375	F	BROWN	89558-9175	73404-3560	89538-0251	89558-8172	89558-8000	89558-9210	89558-8150
73403-0374	E	GREEN	89558-9174	73404-3560	89538-0251	89558-8172	89558-8000	89558-9210	89558-8150
73403-0373	D	BORDEAUX VIOLET	89558-9173	73404-3560	89538-0251	89558-8172	89558-8000	89558-9210	89558-8150
73403-0372	C	BLUE	89558-9172	73404-3560	89538-0251	89558-8172	89558-8000	89558-9210	89558-8150
73403-0371	B	CREAM WHITE	89558-9171	73404-3560	89538-0251	89558-8172	89558-8000	89558-9210	89558-8150
73403-0370	A	BLACK	89558-9170	73404-3560	89538-0251	89558-8172	89558-8000	89558-9210	89558-8150
PART NO.	KEY CODE	COLOR	ITEM NO. 1	ITEM NO. 2	ITEM NO. 3	ITEM NO. 4	ITEM NO. 5	ITEM NO. 6	ITEM NO. 7
			SHROUD	SMB SUB-ASSY	CONTACT (T&R)	CRIMP TUBE	CABLE SEAL	END CAP	ISL

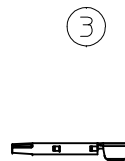
CHG: SEE SHEET 1 EC NO: URF2017-0388 DRWN:SSAH 2017/05/15 CHKD:LME LR 2017/05/17 APPR:AROBERTSON 2017/05/23 D	DESCRIPTION REV	QUALITY SYMBOLS	GENERAL TOLERANCES (UNLESS SPECIFIED)		DIMENSION STYLE MM/IN		SCALE	DESIGN UNITS METRIC		THIRD ANGLE PROJECTION	
		=0 =0 =0		mm	INCH	DRAWN BY	DATE	TITLE FAKRA PLUG SEALED FOR RG174 FAKRA-PC, EWR-5416			
			4 PLACES	± ---	± ---	AROBERTSON	2014/11/17				
			3 PLACES	± ---	± ---	CHECKED BY	DATE				
			2 PLACES	± ---	± ---	SSS	2014/11/17				
			1 PLACE	± ---	± ---	APPROVED BY	DATE				
		0 PLACE	± ---	± ---	AROBERTSON	2015/04/24	DOCUMENT NO. SD-73403-037				
		ANGULAR ± 2 °		MATERIAL NO.		SHEET NO. 3 OF 4					
		DRAFT WHERE APPLICABLE MUST REMAIN WITHIN DIMENSIONS		SEE TABLE		SIZE C THIS DRAWING CONTAINS INFORMATION THAT IS PROPRIETARY TO MOLEX INCORPORATED AND SHOULD NOT BE USED WITHOUT WRITTEN PERMISSION					



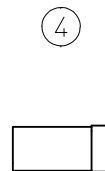
SHROUD



SMB SUB-ASSEMBLY



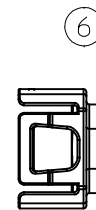
CONTACT
(T&R)



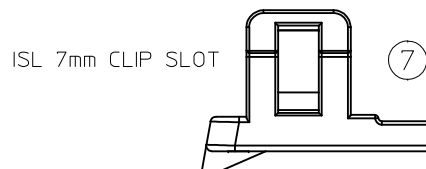
CRIMP TUBE



CABLE
SEAL



END
CAP



ISL 7mm CLIP SLOT

NOTES:

1. ITEM 2 TO BE TRAY PACKED.
2. ALL ITEMS MAY BE BAGGED INDIVIDUALLY TOGETHER WHEN SOLD AS 73403-0XXX ASSEMBLY NUMBER.
3. ITEMS 1/3/4/5/6/7 MAY BE INDIVIDUALLY BULK PACKED. BULK PACKAGE QUANTITIES MUST NOT INDUCE ANY DAMAGE TO PARTS.

73403-0423	N	PASTEL GREEN	89558-9183	73404-3560	89538-0251	89558-8172	89558-8000	89558-9210	89558-8140
73403-0422	M	PASTEL ORANGE	89558-9182	73404-3560	89538-0251	89558-8172	89558-8000	89558-9210	89558-8140
73403-0421	L	CARMINE RED	89558-9181	73404-3560	89538-0251	89558-8172	89558-8000	89558-9210	89558-8140
73403-0420	Z	WATER BLUE	89558-9180	73404-3560	89538-0251	89558-8172	89558-8000	89558-9210	89558-8140
73403-0419	K	CURRY YELLOW	89558-9179	73404-3560	89538-0251	89558-8172	89558-8000	89558-9210	89558-8140
73403-0418	I	BEIGE	89558-9178	73404-3560	89538-0251	89558-8172	89558-8000	89558-9210	89558-8140
73403-0417	H	VIOLET	89558-9177	73404-3560	89538-0251	89558-8172	89558-8000	89558-9210	89558-8140
73403-0416	G	GRAY	89558-9176	73404-3560	89538-0251	89558-8172	89558-8000	89558-9210	89558-8140
73403-0415	F	BROWN	89558-9175	73404-3560	89538-0251	89558-8172	89558-8000	89558-9210	89558-8140
73403-0414	E	GREEN	89558-9174	73404-3560	89538-0251	89558-8172	89558-8000	89558-9210	89558-8140
73403-0413	D	BORDEAUX VIOLET	89558-9173	73404-3560	89538-0251	89558-8172	89558-8000	89558-9210	89558-8140
73403-0412	C	BLUE	89558-9172	73404-3560	89538-0251	89558-8172	89558-8000	89558-9210	89558-8140
73403-0411	B	CREAM WHITE	89558-9171	73404-3560	89538-0251	89558-8172	89558-8000	89558-9210	89558-8140
73403-0410	A	BLACK	89558-9170	73404-3560	89538-0251	89558-8172	89558-8000	89558-9210	89558-8140
PART NO.	KEY CODE	COLOR	ITEM NO. 1	ITEM NO. 2	ITEM NO. 3	ITEM NO. 4	ITEM NO. 5	ITEM NO. 6	ITEM NO. 7
			SHROUD	SMB SUB-ASSY	CONTACT (T&R)	CRIMP TUBE	CABLE SEAL	END CAP	ISL 7mm CS

tb_frame_C_P_AM_T Rev. G 2012/01/11	12	11	10	9	8	7	6	5	4	3	2	1
--	----	----	----	---	---	---	---	---	---	---	---	---