

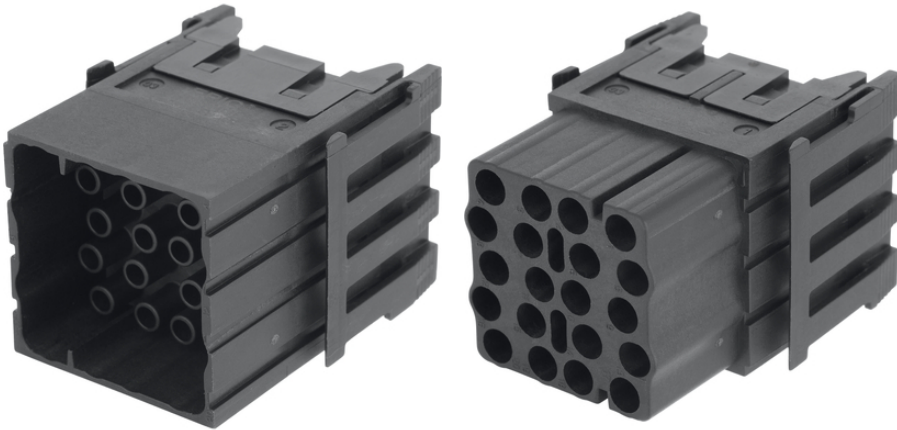
EPIC® MH 20

High flexibility by the use of any combination of inserts in one connector

Info

Stamped gold plated contacts with 0.8mm diameter for D-Sub inserts

Double module 20 pole for control signals



Voltage



Wind Energy



Rail



Mechanical and plant engineering



Automation & fältinstallation



Flame-retardant

Benefits

Double module 20 pole for control signals

Crimp connection for permanent vibration proof contact

EPIC® MH system is mateable with the market standard

The mix of different functions in one plug guarantees high flexibility

Railway applications

- Fire protection on railway vehicles: Test according EN 45545-2. Requirement sets R22 and R23. Hazard level HL1, HL2 and HL4

Last Update (26.10.2017)

©2017 Lapp Group - Technical changes reserved

Product Management www.lappkabel.de

You can find the current technical data in the corresponding data sheet.

PN 0456 / 02_03.16

EPIC® MH 20

Application range

Mechanical engineering
Robotics industry
Plant engineering
Renewable energy
Railway applications / vehicle construction

Technical Data

Classification:	ETIM 5.0 Class-ID: EC002641 ETIM 5.0 Class-Description: Modular connector (industrial connector)
Rated voltage (V):	500
Rated impulse voltage:	6 kV
Rated current (A):	16 A
Pollution degree:	3
Flammability:	UL94 V-0
Contact resistance:	< 5 mOhm
Number of contacts:	20
Termination methods:	Crimp termination
Material:	Polyamide, glass fibre-reinforced
Cycle of mechanical operation:	500
Certifications:	UL-tested: UL File Number: E75770
Temperature range:	-40°C +125°C

Note

Photographs are not to scale and do not represent detailed images of the respective products.
Prices are net prices without VAT and surcharges. Sale to business customers only.



EPIC® MH 20

Article number	Article description	Contact type	Number of operating contacts	Slots
44423226	EPIC® MHS 20 CM	male	20	2
44423227	EPIC® MHB 20 CM	female	20	2

Last Update (26.10.2017)

©2017 Lapp Group - Technical changes reserved

Product Management www.lappkabel.de

You can find the current technical data in the corresponding data sheet.

PN 0456 / 02_03.16