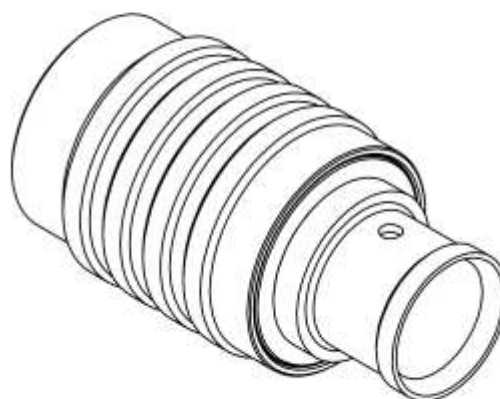
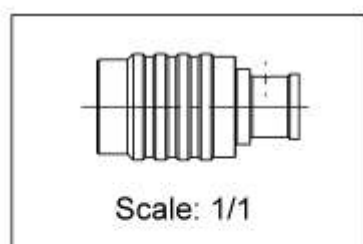
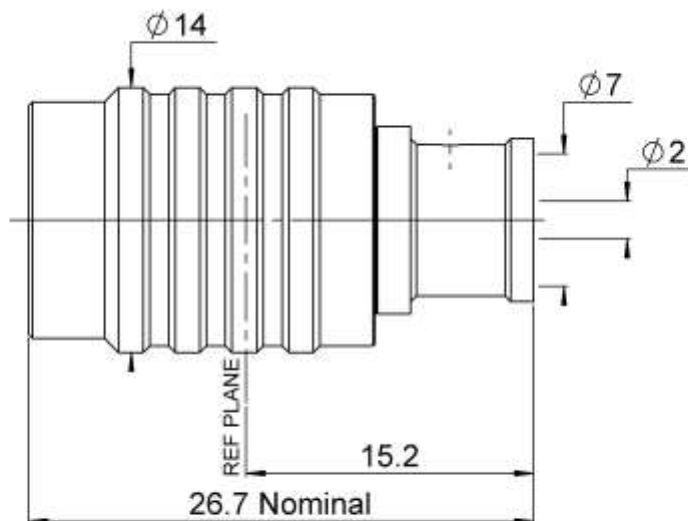


PAGE 1/3

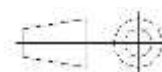
ISSUE 26-01-17A

SERIES NEX10

PART NUMBER R180060007



All dimensions are in mm.



| COMPONENTS | MATERIALS | PLATING (µm) |
|----------------|-------------------------|---------------|
| Body | BRASS. | BBR |
| Center contact | BRASS. | SILVER |
| Outer contact | BERYLLIUM COPPER | SILVER |
| Insulator | PTFE | |
| Gasket | SILICONE RUBBER | |
| Others parts | BRASS,BRONZE | BBR |
| - | - | - |
| - | - | - |

PAGE **2/3**

ISSUE **26-01-17A**

SERIES **NEX10**

PART NUMBER **R180060007**

PACKAGING

| Standard | Unit | Other |
|-----------|-------------------|-------------------|
| 50 | Contact us | Contact us |

ELECTRICAL CHARACTERISTICS

| | | |
|---------------------------------|------------------------------|--------------------------|
| Impedance | 50 | Ω |
| Frequency | 0-18 | GHz |
| VSWR | 1.02* + 0.0200 | x F(GHz) Maxi |
| Insertion loss | 0.05* | \sqrt{F} (GHz) dB Maxi |
| RF leakage | - (NA) | - F(GHz)) dB Maxi |
| Voltage rating | 500 | Veff Maxi |
| Dielectric withstanding voltage | 1500 | Veff mini |
| Insulation resistance | 5000 | M Ω mini |

MECHANICAL CHARACTERISTICS

| | | |
|----------------------------|----------------|-------------|
| Center contact retention | | |
| Axial force – Mating End | NA | N mini |
| Axial force – Opposite end | NA | N mini |
| Torque | NA | N.cm mini |
| Recommended torque | | |
| Mating | NA | N.cm |
| Panel nut | NA | N.cm |
| Clamp nut | NA | N.cm |
| A/F clamp nut | 0.0000 | mm |
| Mating life | 100 | Cycles mini |
| Weight | 12.7090 | g |

ENVIRONMENTAL

| | | |
|-----------------------|-----------------|-----------|
| Operating temperature | -55~+125 | °C |
| Hermetic seal | NA | Atm.cm3/s |
| Panel leakage | NA | |

SPECIFICATION

CABLE ASSEMBLY

| Stripping | a | b | c | d | e | f |
|-----------|----------|----------|----------|----------|----------|----------|
| mm | 5 | 9 | 0 | 0 | 0 | 0 |

Assembly instruction: **NA**

Recommended cable(s)

HCF 1/4" Cu2Y AlCu

Characteristics indicated on this data sheet are those that can be achieved with the highest performance cable. Intrinsic limitations of the cable may diminish the performance of the assembly

Cable retention

| | | |
|------------|------------|--------|
| - pull off | 250 | N mini |
| - torque | NA | N.cm |

TOOLING

| Part Number | Description | Hexagon |
|-------------|-------------|---------|
| . | . | . |

OTHER CHARACTERISTICS

IP68(1m,24h) mated condition

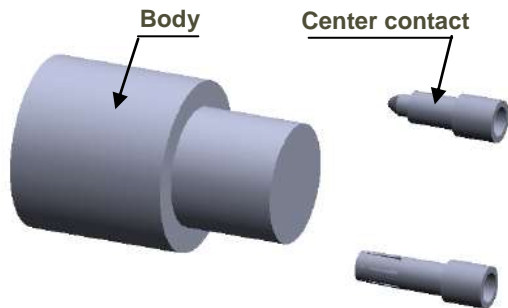
PAGE 3/3

ISSUE 26-01-17A

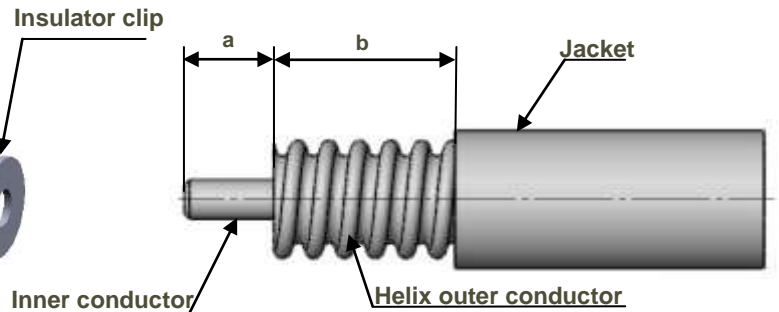
SERIES NEX10

PART NUMBER R180060007

COMPONENTS

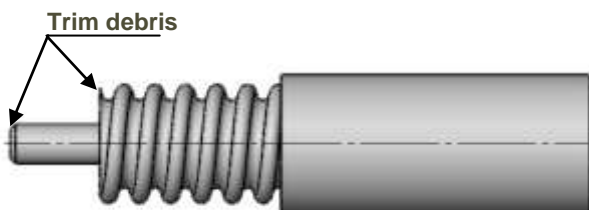


STRIPPING DIMENSION



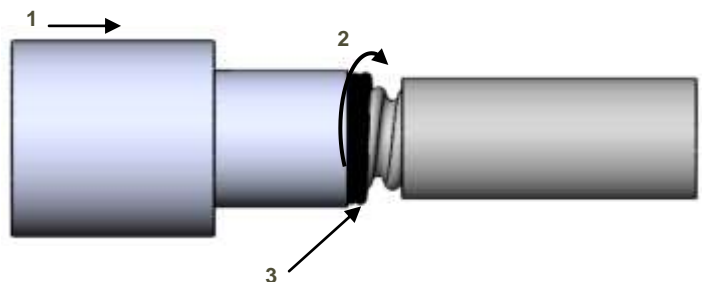
1

- Strip the cable.
- Do not damage the outer conductor.
- The end surface of inner conductor should be chamfered.
- Remove impurities such as copper scraps and burrs on the end surface of the cable.



3

- Push the cable into the connector body, until it stops.
- Use the reserved solder wire to wrap the cable to fill the space between cable and connector.
- Solder the connector body with cable.



2

- Insert insulator clip on the cable.
- Insert center contact until the insulator clip.
- Solder center contact.
- Wrap the cable by solder wire (Dia 0.8 mm).

