

NOTES:

1. MATERIALS AND FINISHES:
BODY, FERRULE AND BAYONET SLEEVE - BRASS, NICKEL PLATING
OUTER CONTACT - BeCu, NICKEL PLATING
CONTACT - PHOSPHOR BRONZE, GOLD PLATING
INSULATOR - PTFE, NAUTRAL
2. ELECTRICAL:
A. IMPEDANCE: 75 OHM
B. FREQUENCY RANGE: DC - 12 GHz
C. RETURN LOSS: 24 dB MIN @ DC-6 GHz
15 dB MIN @ DC-12 GHz
D. DIELECTRIC WITHSTANDING VOLTAGE: 1000 VRMS, MIN.
E. INSULATION RESISTANCE: 10,000 MΩ MIN
3. MECHANICAL:
A. DURABILITY: 500 CYCLES MIN.
B. TEMPERATURE RANGE: -65° C TO +165° C
4. ENVIRONMENTAL:
A. THERMAL SHOCK PER MIL-STD-202 METHOD 107
TEST CONDITION B (EXCEPT HIGH TEMP @200°C)
B. VIBRATION: MIL-STD-202 METHOD 204 TEST CONDITION B
C. SHOCK: MIL-STD-202 METHOD 213 TEST CONDITION B
D. CORROSION: MIL-STD-202 METHOD 101
TEST CONDITION B 5% SALT SOLUTION
5. PACKAGING:
A. QUANTITY: SINGLE PACK
B. MARKING: BAG TO BE MARKED:
"AMPHENOL RF, 34-1104-12G, DATE CODE
U.S. PATENT NO. 7,553,177"
6. HIGH DENSITY INSTALLATION/REMOVAL TOOL: 227-T2000-1694A.

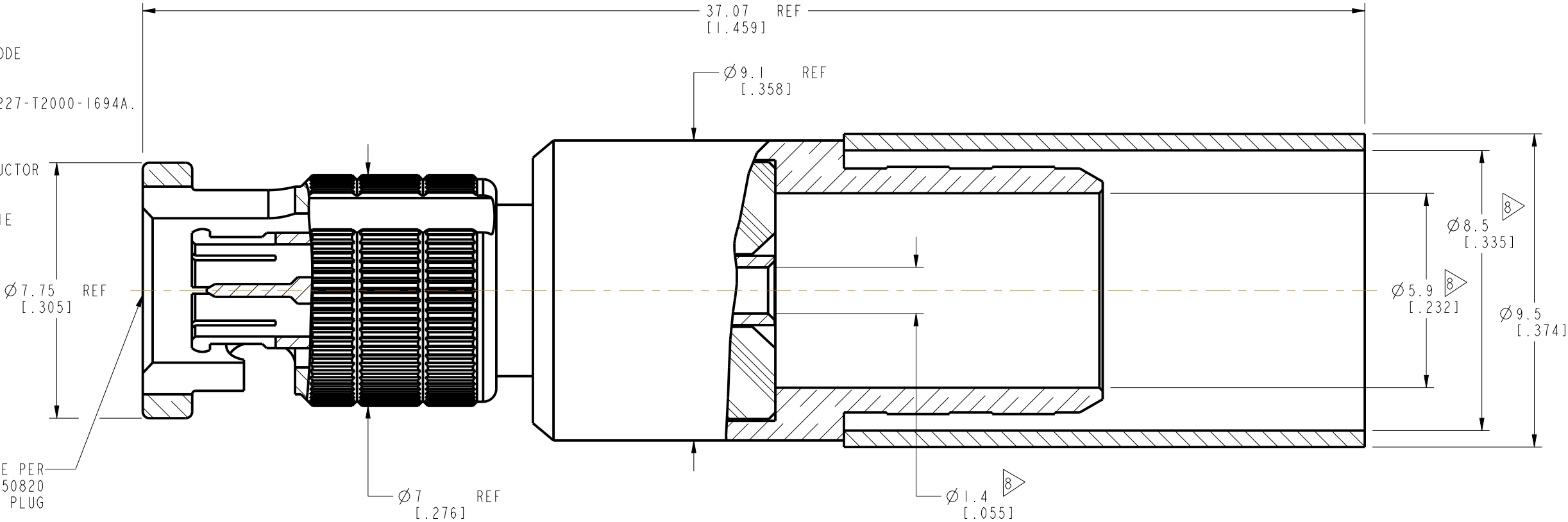
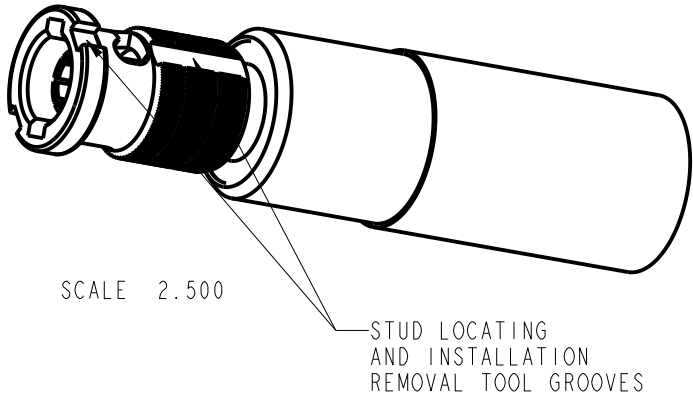
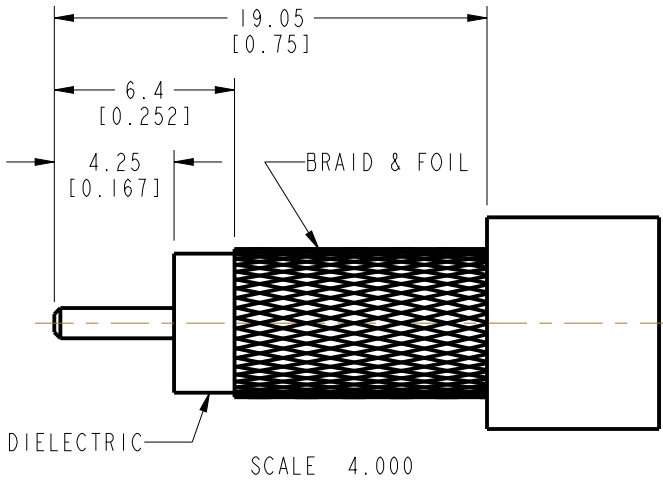
7. CABLE ASSEMBLY INSTRUCTIONS:
A. TRIM CABLE AS SHOWN.
B. SOLDER CONTACT TO CABLE CENTER CONDUCTOR
OR CRIMP CONTACT TO CABLE CENTER
CONDUCTOR WITH .068" HEX DIE
C. CRIMP FERRULE WITH .324" INCH HEX DIE
- 8> SHOWS CABLE ENTRY DIMENSIONS.

INTERFACE PER
349-50820
SERIES : HD-BNC PLUG

THIRD ANGLE PROJ.

REVISIONS

REV	DESCRIPTION	DATE	ECO	APPR
A	RELEASE TO MFG.	23-Feb-17	03123	KCE



PROTECTED UNDER U.S. PATENT # 7,553,177

CUSTOMER OUTLINE DRAWING
ALL OTHER SHEETS ARE FOR INTERNAL USE ONLY

UNLESS OTHERWISE SPECIFIED, DIMENSIONS ARE IN METRIC AND TOLERANCES ARE: <0.5mm 0.5 - 6mm 6 - 30mm 30 - 120mm ANGLES ± 0.05mm ±0.1mm ±0.2mm ± 0.3mm ±1°	MATERIAL	DRAWN K. ELMES	DATE 11/16/16	TITLE HD-BNC STR PLUG FOR BELDEN 4794R 9.50 MM PITCH		Amphenol RF Danbury CT USA, Tainan, Taiwan, Shenzhen, China www.amphenolrf.com
		ENGINEER K. ELMES	DATE 11/16/16			
	REFERENCE EAR # 7413	APPROVED K. CAPOZZI	DATE 23/Feb-17	SCALE: 6.8:1.0	SHEET 2 OF 2	
	CONFIGURATION LEVEL:	CAD FILE	DWG SIZE B	REV A		
	FINISH					
NOTICE - These drawings, specifications, or other data (1) are, and remain the property of Amphenol corp. (2) must be returned upon request; and (3) are confidential and not to be disclosed to any person other than those to whom they are given by Amphenol Corp. the furnishing of these drawings, specifications, or other data by Amphenol Corp., or to any other person to anyone for any purpose is not to be regarded by implication or otherwise in any manner licensing, granting rights to permitting such holder or any other sperson to manufacture, use or sell any product, process or design, patented or otherwsie, that may in any way be related to or disclosed by said drawings, specifications, or other data.						DRAWING NO.34-1104-12G
						ITEM NO.34-1104-12G
						PART NO.34-1104-12G