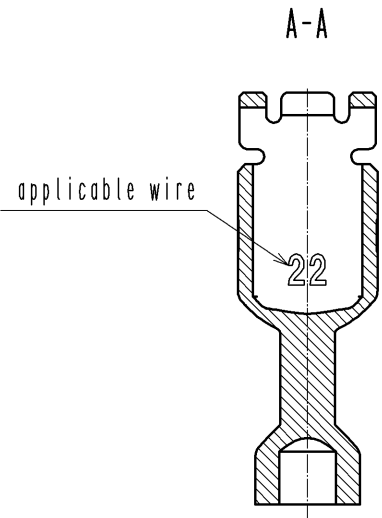
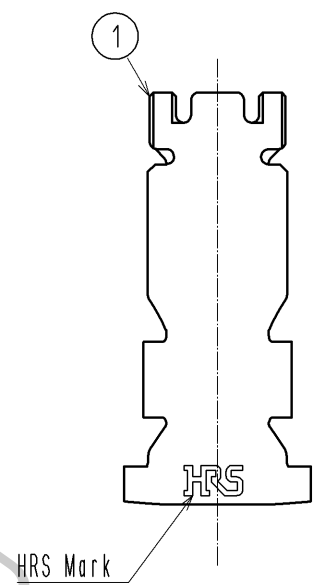
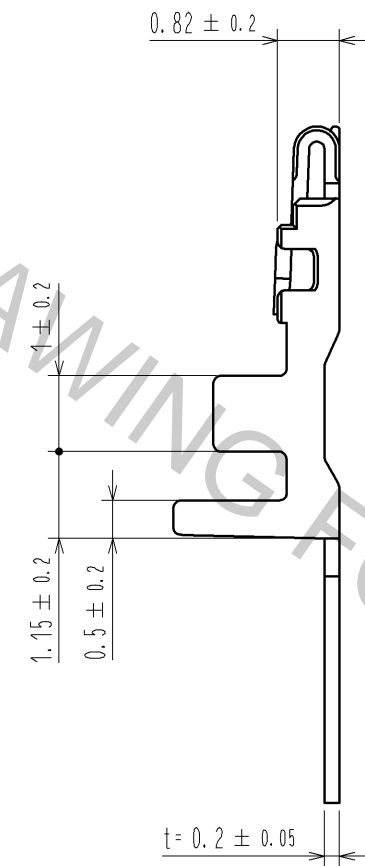
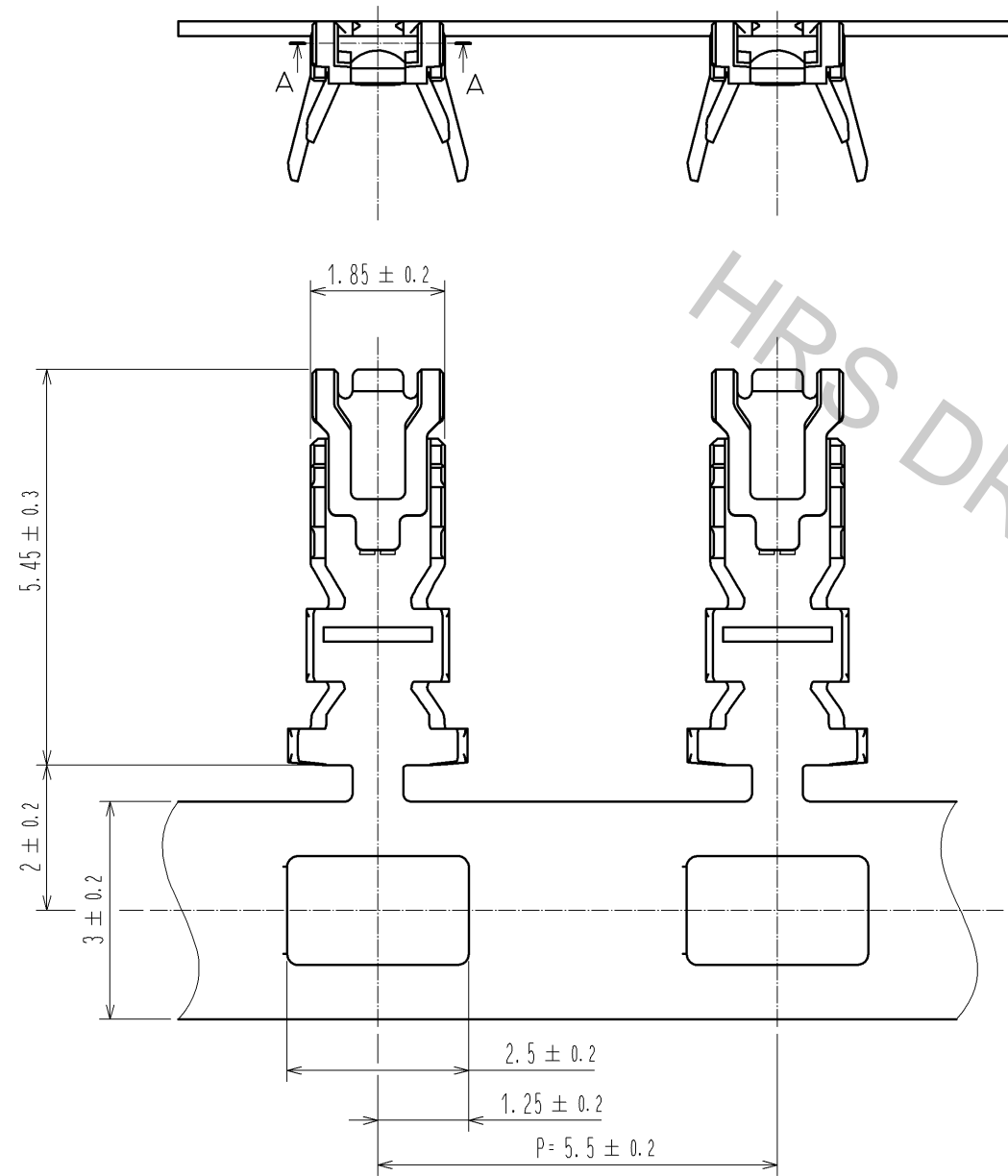
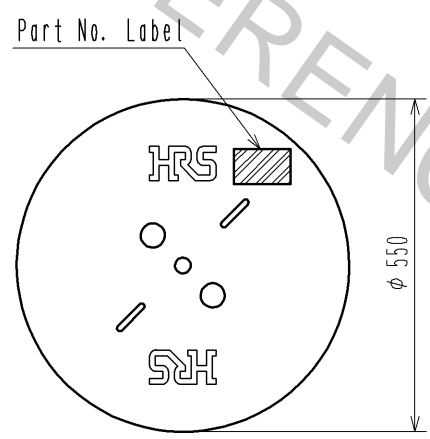


Oct.1.2018 Copyright 2018 HIROSE ELECTRIC CO., LTD. All Rights Reserved.
In case that the application demands a high level of reliability, such as automotive,
please contact a company representative for further information.



2 Reel style and dimensions

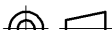




Detail Of Part No. Label

HRS		検査
品名コード	CL667-0042-8	
品名	DF59M-2224PCF	
数量	15000	
仕様		
LOT No.		
継ぎ目		

Section
Lot No.
Specification
Quantity
Part No.
Code No.

- Notes
- 1RL : 15000 contacts.
 - 2 Style of reel and box are shown in figure.
 3. Please be sure to check the form of crimping using a cable when you adjust applicator.
 4. Always refer to the manuals below for operation of this product.
For Cable assembly / Cable assembly procedure ETAD-H0778
For Mating/Unmating / Operation manual ETAD-H0779

NO.			MATERIAL		FINISH . REMARKS			1	Copper Alloy		Surface :Tin plating 1μm MIN			
UNITS mm					SCALE 10 : 1		COUNT	DESCRIPTION OF REVISIONS			DESIGNED		CHECKED	DATE
 HIROSE ELECTRIC CO., LTD.					APPROVED : HK. UMEHARA		14. 05. 20		DRAWING NO.		EDC3-356515-01			
					CHECED : HK. UMEHARA		14. 05. 20		PART NO.		DF59M-2224PCF			
					DESIGNED : SZ. ONO		14. 05. 19		CODE NO.		CL667-0042-8-00			
					DRAWN : SZ. ONO		14. 05. 19				 1/1			