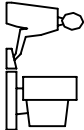
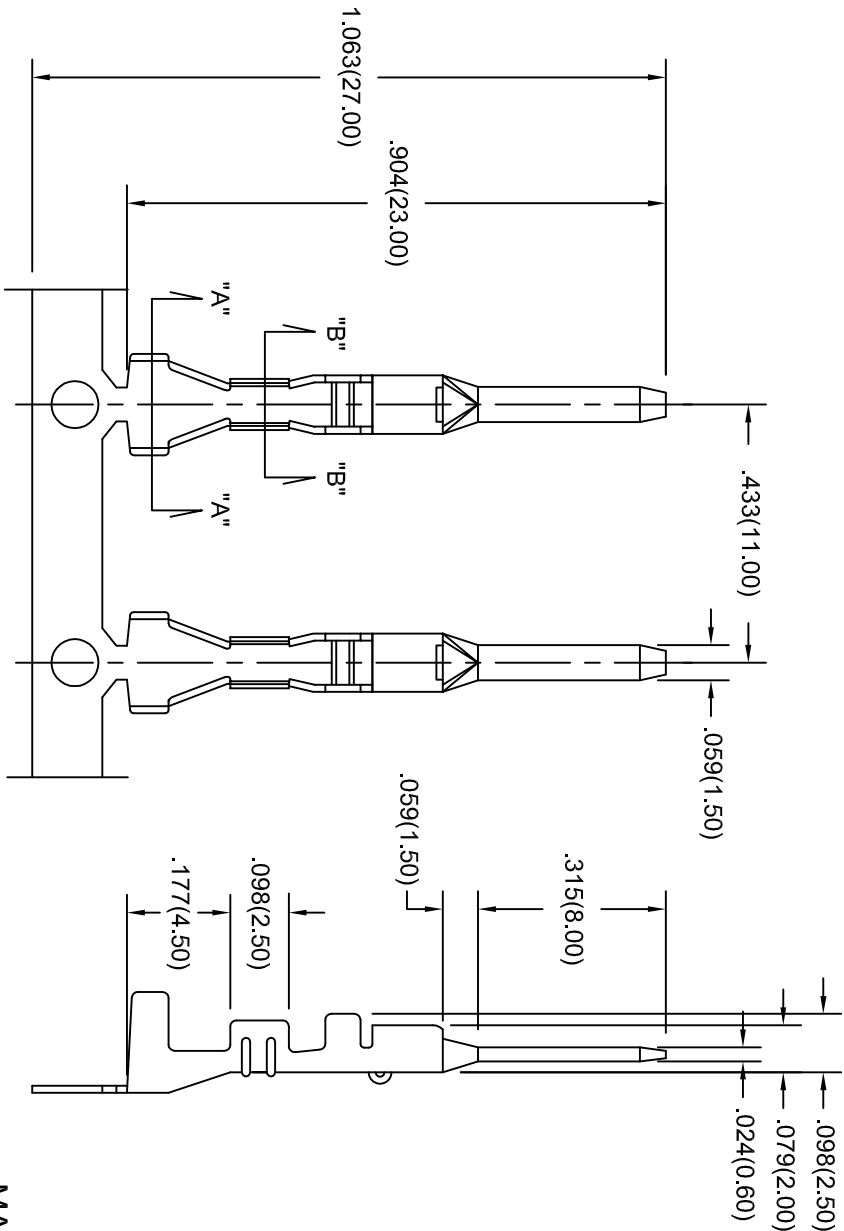


THIS IS A C.A.D. GENERATED DRAWING
DO NOT MAKE MANUAL REVISIONS TO MASTER.
ALL TOLERANCES UNLESS OTHERWISE SPECIFIED ±.015



ISSUE NUMBER
ORIGINAL
1



MATERIAL: BRASS, TIN PLATED

PART NUMBER 570-290-751 WILL BE IN REEL 4.000 PCS
PART NUMBER 570-290-751P40 WILL BE IN STRIP 40 PCS

SECTION "B-B"

SECTION "A-A"

570 SERIES MALE CRIMP CONTACT
WIRE RANGE AWG 20 TO 16

EDAC INC.
TORONTO, ONTARIO
CANADA
YOUR CONNECTION TO QUALITY & SERVICE

THESE DRAWINGS AND SPECIFICATIONS
ARE THE PROPERTY OF EDAC INC. AND
SHALL NOT BE REPRODUCED OR COPIED
OR USED AS THE BASIS FOR THE
MANUFACTURE OR SALE OF APPARATUS
WITHOUT WRITTEN PERMISSION

ACAD REF DWG NUMBER 570-290-751

DRAWN: F.BRIONES DATE: JUL30/14

CHECKED: DATE:

PART NUMBER

570-290-751

DRAWING NUMBER

570-290-751

ISSUE

1