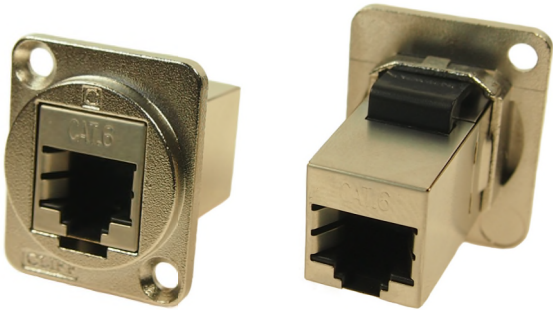
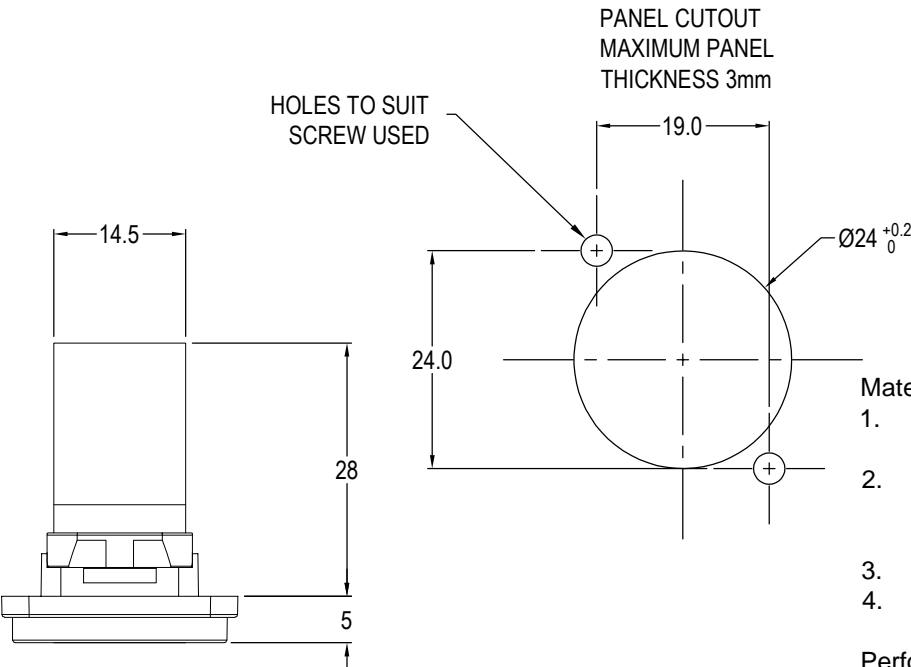


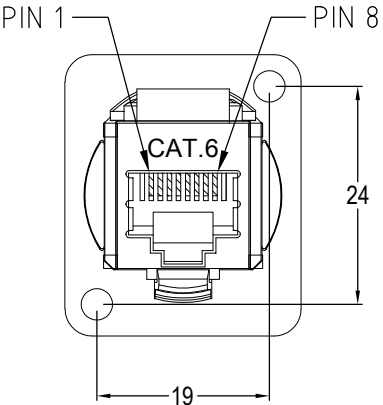
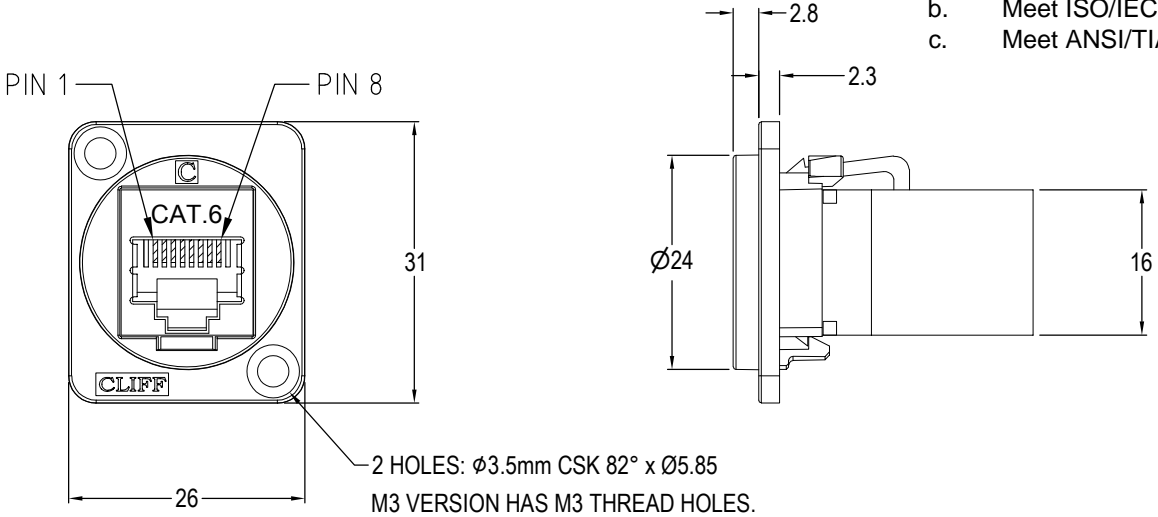
ISS.	AMEND	DATE
1	1st DRAWN	04/09/15
2	ADD M3 VARIANT	16/07/18



- Material:
1. RJ45 In-Line Coupler: ABS, UL 94V-0, Black colour, Fully Shielded
  2. RJ45 In-Line Coupler Contact: Phosphor Bronze, 3-50 micro inches gold plating over nickel plate.
  3. PCB: FR4, UL 94V-0
  4. Frame: Nickel plated zinc diecast

VARIANTS	
PART No.	HOLE DETAILS
CP30222SM	HOLE Ø3.50 x CSK 82° x Ø5.85
CP30222SM3	M3 HOLES

- Performance:
- a. T568A & T568B wiring.
  - b. Meet ISO/IEC 11801 and EN50173
  - c. Meet ANSI/TIA/EIA 568B.2



TOLERANCE

NO DEC. PLACE ±

1 DEC. PLACE ±

2 DEC. PLACE ±

HOLE Ø ±

ANGLES ±

UNLESS OTHERWISE STATED