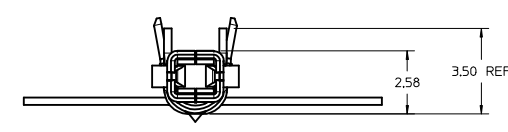
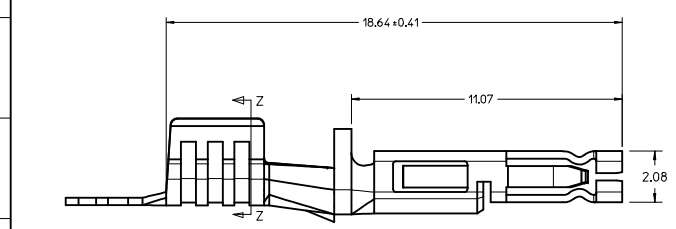
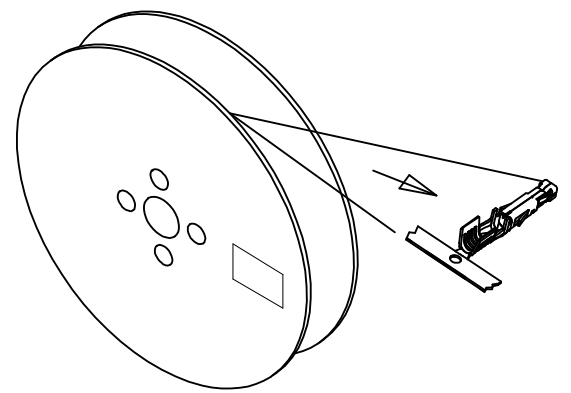
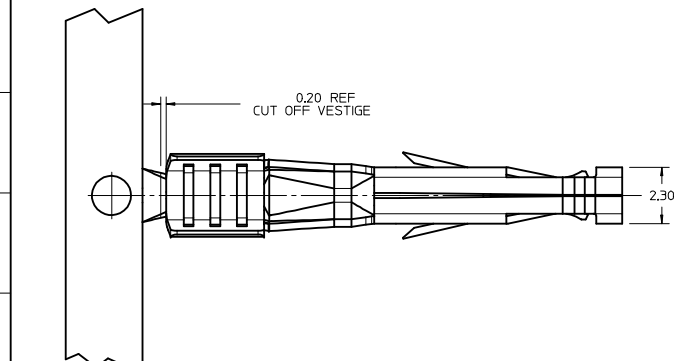
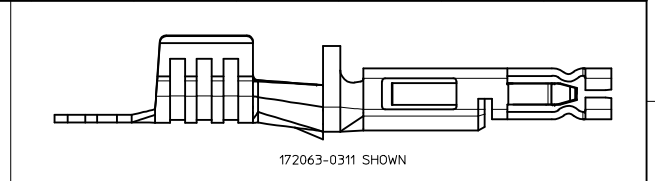
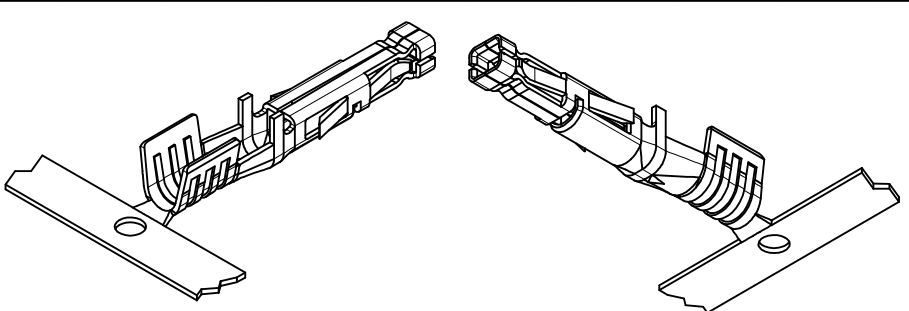
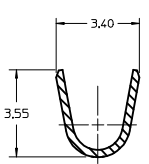


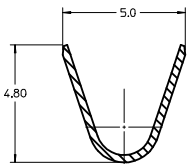
ITEM NO.	WIRE GAUGE (AWG)	WIRE GAUGE (METRIC)	PLATING	PACKAGING
172063-0311	14 OR 16 AWG	1.5mm <sup>2</sup>	15 GOLD	REEL
172063-0411				LOOSE
172063-0312				REEL
172063-0412	12 AWG	4.0 OR 2.5mm <sup>2</sup>	15 GOLD	LOOSE
172063-1311				REEL
172063-1411				LOOSE
172063-1312	14 OR 16 AWG	1.5mm <sup>2</sup>	30 GOLD	REEL
172063-1412				LOOSE
172063-1312				REEL
172063-1412	12 AWG	4.0 OR 2.5mm <sup>2</sup>	30 GOLD	LOOSE
76823-0321				REEL
76823-0421				LOOSE
76823-0322	14 OR 16 AWG	1.5mm <sup>2</sup>	TIN	REEL
76823-0422				LOOSE



76823-0321 SHOWN



SECTION Z-Z  
CONDUCTOR CRIMP 14/16 AWG



SECTION Z-Z  
CONDUCTOR CRIMP 12 AWG

FINISH PART UNWIND DIRECTION

- NOTES:
1. MATERIAL: HIGH CONDUCTIVITY COPPER ALLOY
  2. FINISH:  
(TIN) 152 MICROMETER / (60 MICROINCH) MINIMUM REFLOWED MATTE TIN OVER  
127 MICROMETER / (50 MICROINCH) MINIMUM NICKEL LUBRICANT ADDED TO  
CONTACT INTERFACE.  
(15 GOLD) 0.38 MICROMETER / (15 MICROINCH) MINIMUM SELECT GOLD AND  
2.54 MICROMETER / (100 MICROINCH) MINIMUM SELECT MATTE TIN OVER  
127 MICROMETER / (50 MICROINCH) MINIMUM NICKEL OVERALL.  
(30 GOLD) 0.76 MICROMETER / (30 MICROINCH) MINIMUM SELECT GOLD AND  
2.54 MICROMETER / (100 MICROINCH) MINIMUM SELECT MATTE TIN OVER  
127 MICROMETER / (50 MICROINCH) MINIMUM NICKEL OVERALL.
  3. PRODUCT SPECIFICATION: PS-76823-100
  4. PACKAGING REEL PER PK-76823-001,  
LOOSE PER PK-76823-002
  5. TERMINAL FOR USE WITH 170001 & 171692 SERIES RECEPTACLES.
  6. APPLICATION SPECIFICATION: AS-76823-100
  7. PART CONFORMS TO CLASS "B" REQUIREMENTS OF COSMETIC SPECIFICATION PS-45499-002.

LOOSE P/N'S EC NO: UCP2015-4832 DRAWN BY: 2015/05/18 CHKD: JRELL 2015/05/18 APPR: JSM TH 2015/06/15	QUALITY SYMBOLS ▽=0 ▽=0 ▽=0	GENERAL TOLERANCES (UNLESS SPECIFIED) mm INCH 4 PLACES ± --- ± --- 3 PLACES ± --- ± --- 2 PLACES ± 0.25 ± --- 1 PLACE ± 0.36 ± --- 0 PLACE ± ± ANGULAR ± 1/2° DRAFT WHERE APPLICABLE MUST REMAIN WITHIN DIMENSIONS	DIMENSION STYLE MM ONLY DRAWN BY: DATE MKARADIMAS 2011/10/19 CHECKED BY: DATE APPROVED BY: DATE APATEL 2012/04/03	SCALE 10:1 DESIGN UNITS METRIC THIRD ANGLE PROJECTION	TITLE FEMALE CRIMP TERMINAL MEGA-FIT molex	MATERIAL NO. SD-76823-0100	DOCUMENT NO. SD-76823-0100	SHEET NO. 1 OF 1