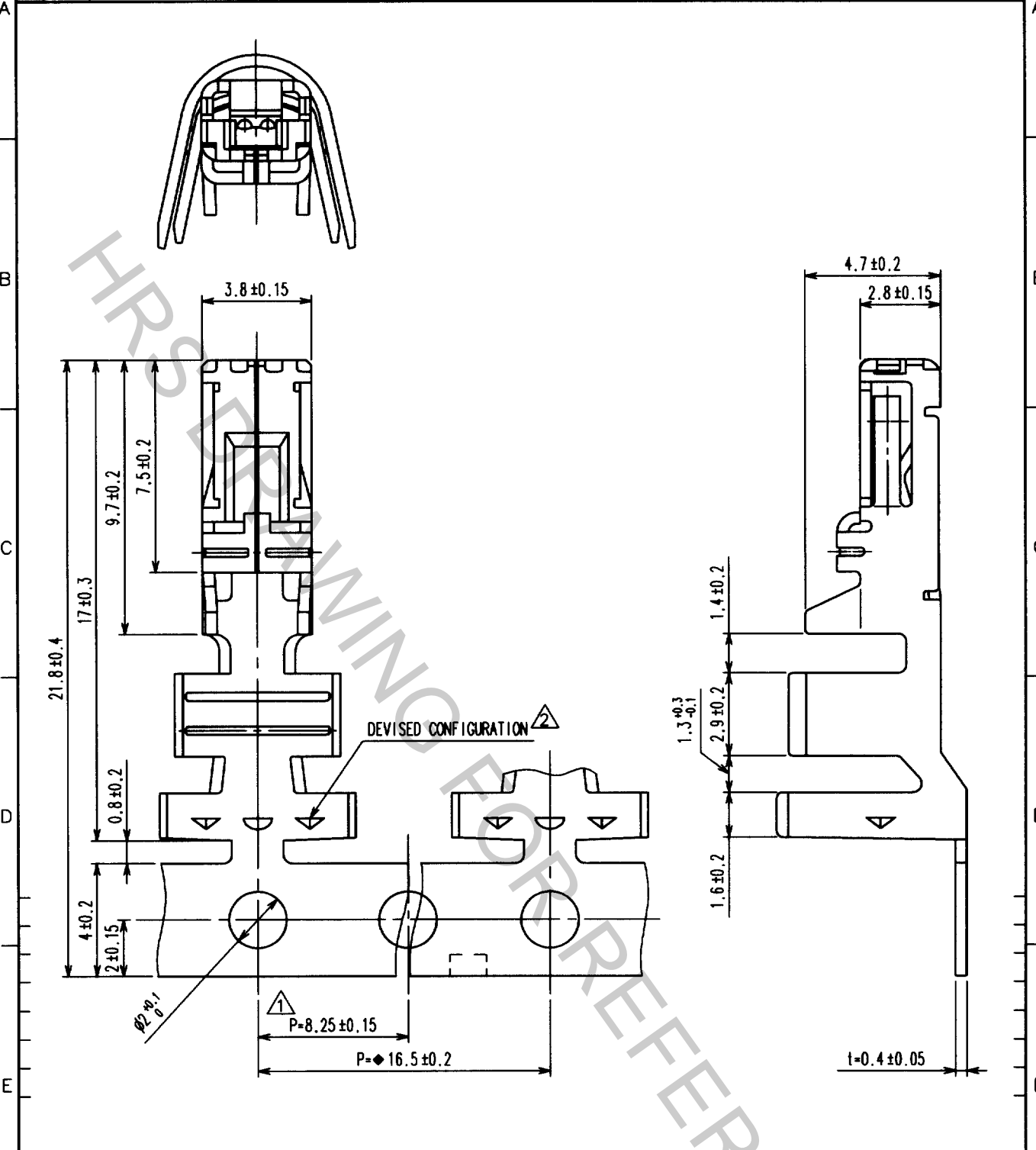


Oct.1.2018 Copyright 2018 HIROSE ELECTRIC CO., LTD. All Rights Reserved.  
In case that the application demands a high level of reliability, such as automotive,  
please contact a company representative for further information.

1					2					3					4				
COUNT	DESCRIPTION OF REVISIONS				BY	CHKD	DATE			COUNT	DESCRIPTION OF REVISIONS				BY	CHKD	DATE		
1	RE-H-04835				M.K	T.M	02.01.21			1									
1	RE-H-05042				H.U	T.M	22.05.20			1									



NO.		MATERIAL	FINISH, REMARKS	1	COPPER ALLOY		TIN PLATED			
CODE NO. (OLD)		DRAWN		DESIGNED	CHECKED	APPROVED	RELEASED			
CL		M.Kuramashi		H.Umehara	C.Hanami	K.Katayose				
		01.04.06		01.04.06	01.04.09	01.04.16				
DRAWING NO.		PART NO.								
EDC4-163760		DF22A-1012SCF								
CODE NO.								1/1		
CL680-1089-7										

TO				

SACLE	DRAWING NO.	PART NO.
5 : 1	EDC4-163760	DF22A-1012SCF
UNITS	HIROSE ELECTRIC CO., LTD.	CL680-1089-7
mm		