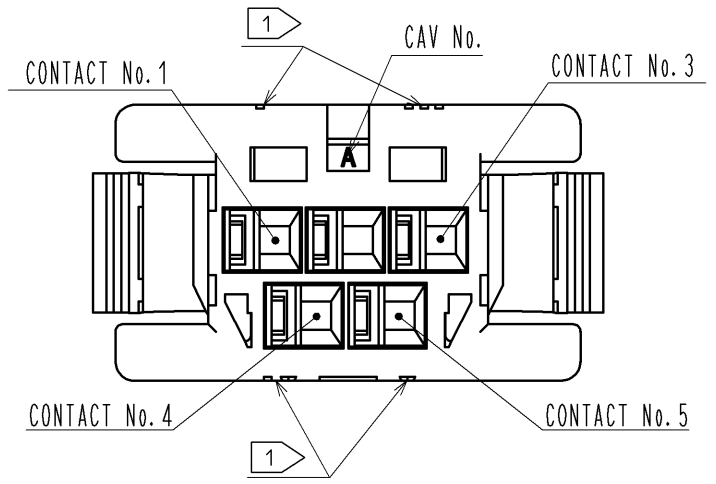
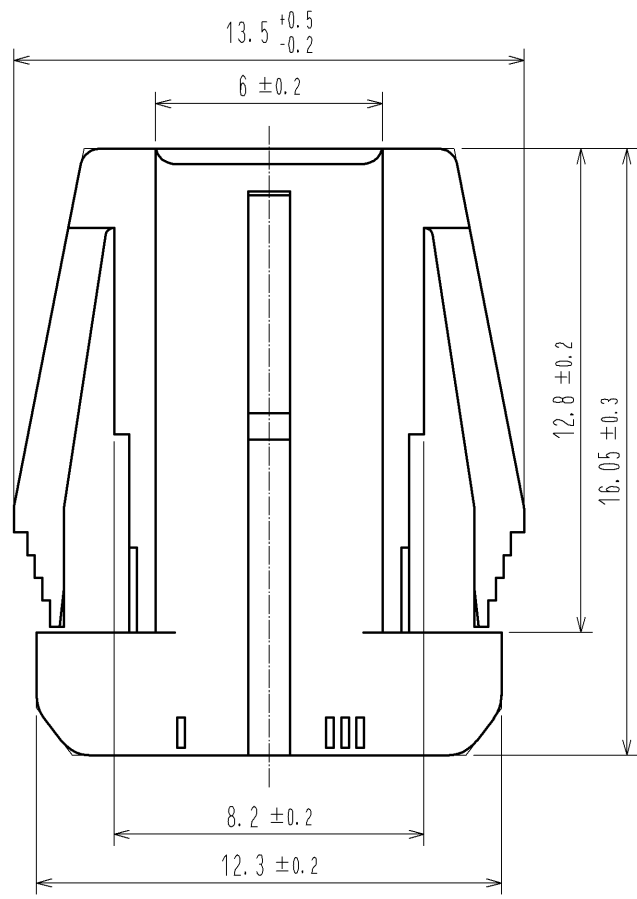
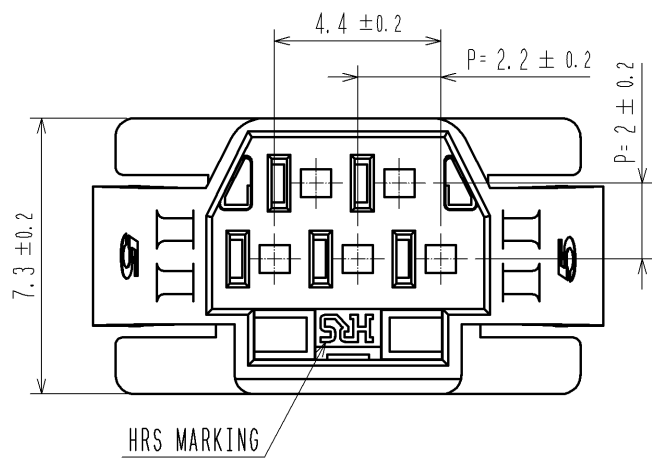
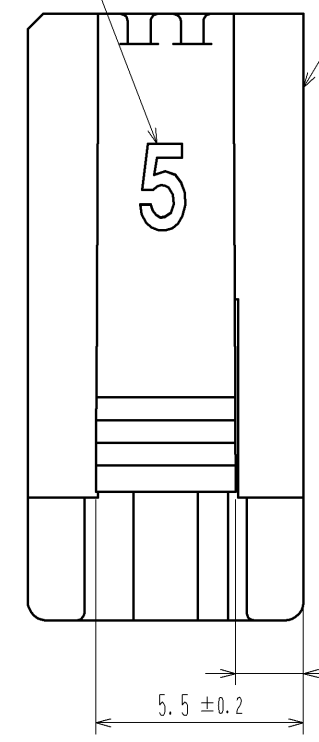


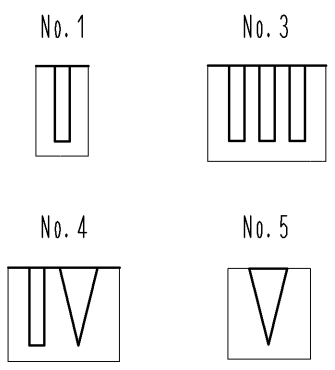
Oct.1.2018 Copyright 2018 HIROSE ELECTRIC CO., LTD. All Rights Reserved.
In case that the application demands a high level of reliability, such as automotive,
please contact a company representative for further information.



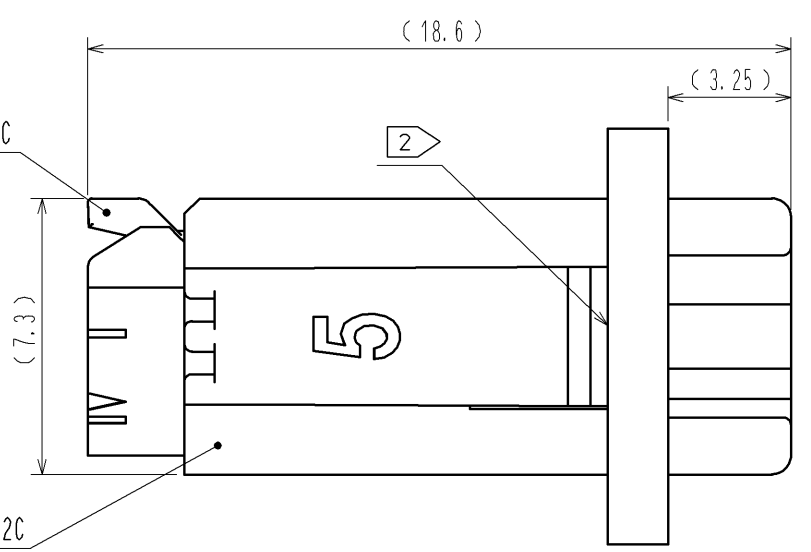
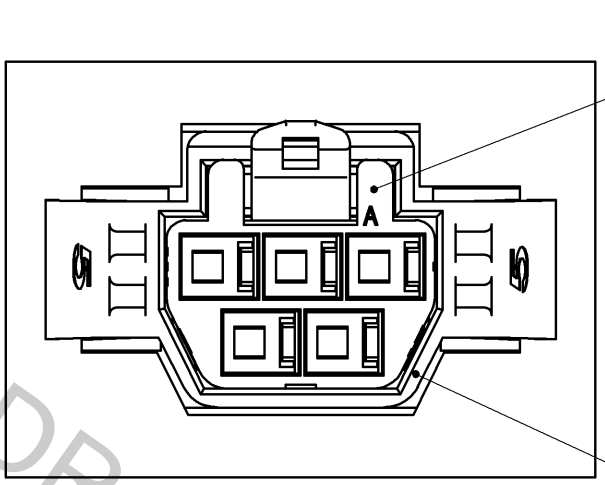
NUMBER OF POS.



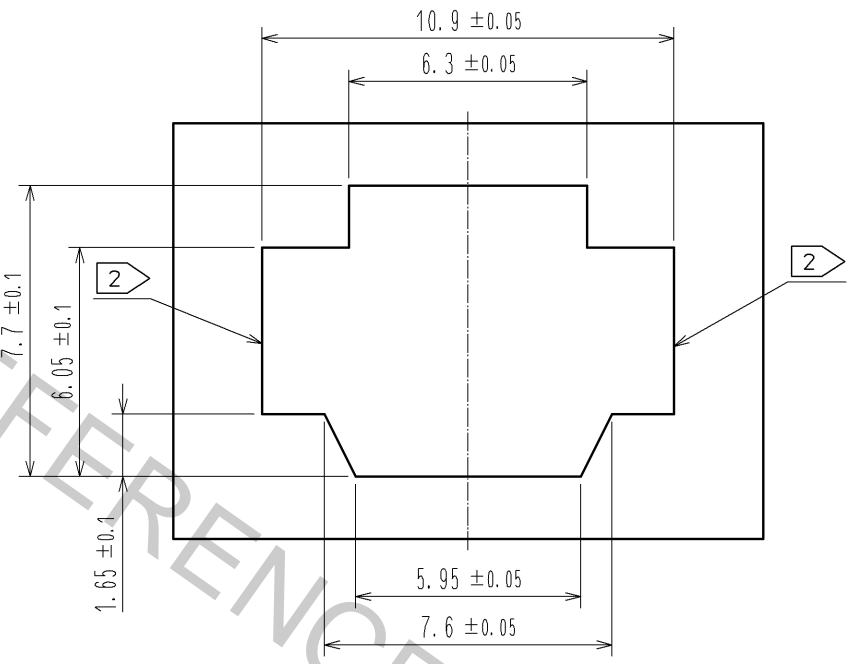
1 FIGURE-1 CONTACT No. MARKING (10:1)



7 MATING FIGURE (PANEL MOUNTED)



3 4 RECOMMENDED PANEL CUTOUT DIMENSION



- NOTE. 1 MARKINGS AT THE INDICATED POSITIONS ARE CONTACT NO. MARKING, AND SHAPES ARE SHOWN IN FIGURE-1.
2 PLEASE USE THE NON-RADIUS SIDE FOR THE PANEL HOOKING AREA.
3 APPLICABLE PANEL THICKENESS IS 2.3 TO 0.5mm.
4 CONSULT HIROSE FOR THE OTHER PANEL CUTOUT DESIGNS THAN THE RECOMMENDED ONE.
5. PER PACK : 100 PIECES.
6. THE DIMENSIONS IN PARENTHESIS ARE FOR REFERENCE.
7 THIS FIGURE SHOWS THE MATED CONDITION WITH DF62B-5S-2.2C.

NO.		MATERIAL		FINISH . REMARKS		1	PBT	UL94V-0(BLACK)
UNITS mm		SCALE 5 : 1		COUNT	DESCRIPTION OF REVISIONS	DESIGNED	CHECKED	DATE
HRS HIROSE ELECTRIC CO., LTD.		APPROVED : KI. AKIYAMA		13.12.26	DRAWING NO.	EDC3-349138-00		
		CHECED : OM. MIYAMOTO		13.12.26	PART NO.	DF62P-5EP-2.2C		
		DESIGNED : TH. YOSHIZAWA		13.12.26	CODE NO.	CL544-0546-0-00		
		DRAWN : MI. SAKIMURA		13.12.25				