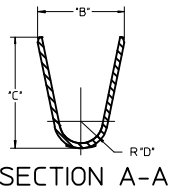
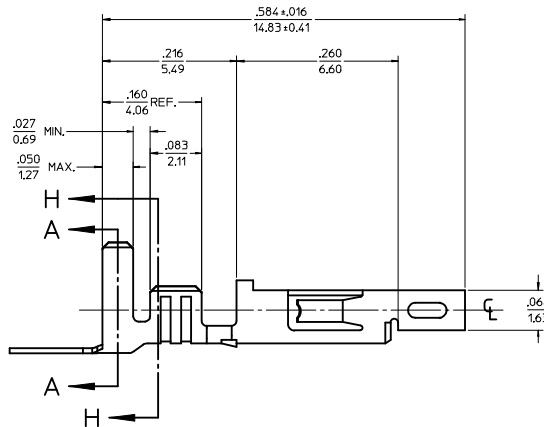
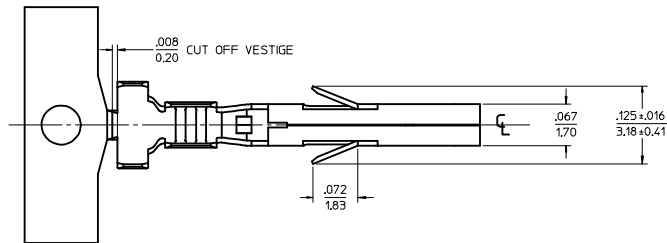
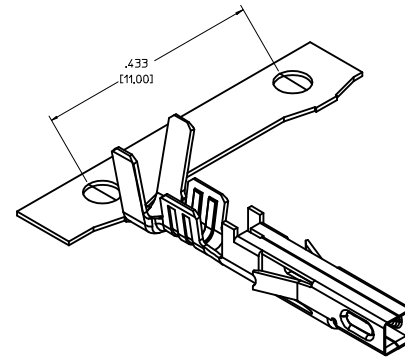


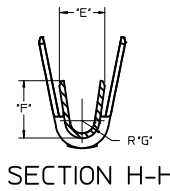
ITEM NO.	FORM	WIRE GAGE	DIM "B"	DIM "C"	DIM "D"	DIM "E"	DIM "F"	DIM "G"	PLATING: SEE NOTE 2
45750111	CHAIN	18-20	.142±.012 (3.60±0.30)	.177±.016 (4.50±0.40)	.035 (0.90)	.075±.012 (1.90±0.30)	.091±.016 (2.30±0.40)	.020 (0.50)	1 TIN OVER NICKEL
45750112	LOOSE	16	.142±.012 (3.60±0.30)	.177±.016 (4.50±0.40)	.035 (0.90)	.091±.012 (2.30±0.30)	.106±.016 (2.70±0.40)	.024 (0.60)	
45750311	CHAIN	18-20	.142±.012 (3.60±0.30)	.177±.016 (4.50±0.40)	.035 (0.90)	.075±.012 (1.90±0.30)	.091±.016 (2.30±0.40)	.020 (0.50)	
45750312	LOOSE	16	.142±.012 (3.60±0.30)	.177±.016 (4.50±0.40)	.035 (0.90)	.091±.012 (2.30±0.30)	.106±.016 (2.70±0.40)	.024 (0.60)	2 SELECT GOLD OVER NICKEL

#### NOTES:

- MATERIAL: COPPER ALLOY .0080/(0.203) THICK
- FINISH:
  - .000100/(0.00254) MIN, BRIGHT TIN OVER .000050/(0.00127) MIN NICKEL OVERALL.
  - .000030/(0.00076) MIN, SELECT GOLD IN CONTACT AREA AND .000100/(0.00254) MIN, SELECT MATTE TIN IN CRIMP AREA OVER .000050/(0.00127) MIN, NICKEL OVERALL.
- GOLD PLATING RECOMMENDED FOR APPLICATIONS WHERE FRETTING CORROSION IS A CONCERN.
- PRODUCT SPECIFICATION: PS-45750-001
- PACKAGING SPECIFICATION : PK-45750-001 FOR CHAIN TERMINALS  
PK-5556-003 FOR LOOSE TERMINALS
- TERMINAL FOR USE WITH 5557, 42474, 44516, 43760, AND 30067 SERIES HOUSINGS.
- WHEN TERMINALS ARE INSTALLED IN THE HOUSING, THE WIRES ARE TO BE DRESSED IN SUCH A MANNER TO ALLOW THE TERMINALS TO FLOAT FREELY IN THE POCKET.
- THIS TERMINAL IS DESIGNED FOR SINGLE WIRE CRIMPING.



SECTION A-A



SECTION H-H

#### LEGEND

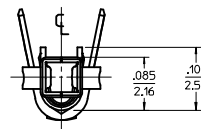
45750 \* \* 1 \*

BASE NUMBER

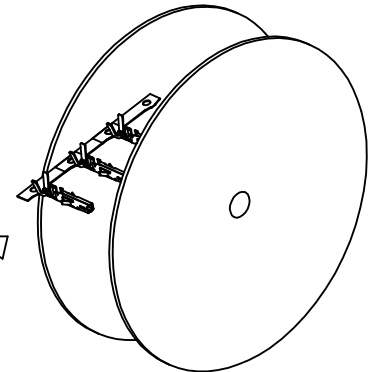
WIRE GAGE  
1 = 18-20  
3 = 16

FORM  
1 = CHAIN  
2 = LOOSE

PLATING (SEE NOTE 2)  
1 = TIN OVER NICKEL  
2 = SELECT GOLD



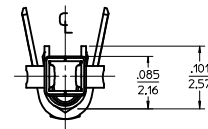
REEL WIND  
DIRECTION




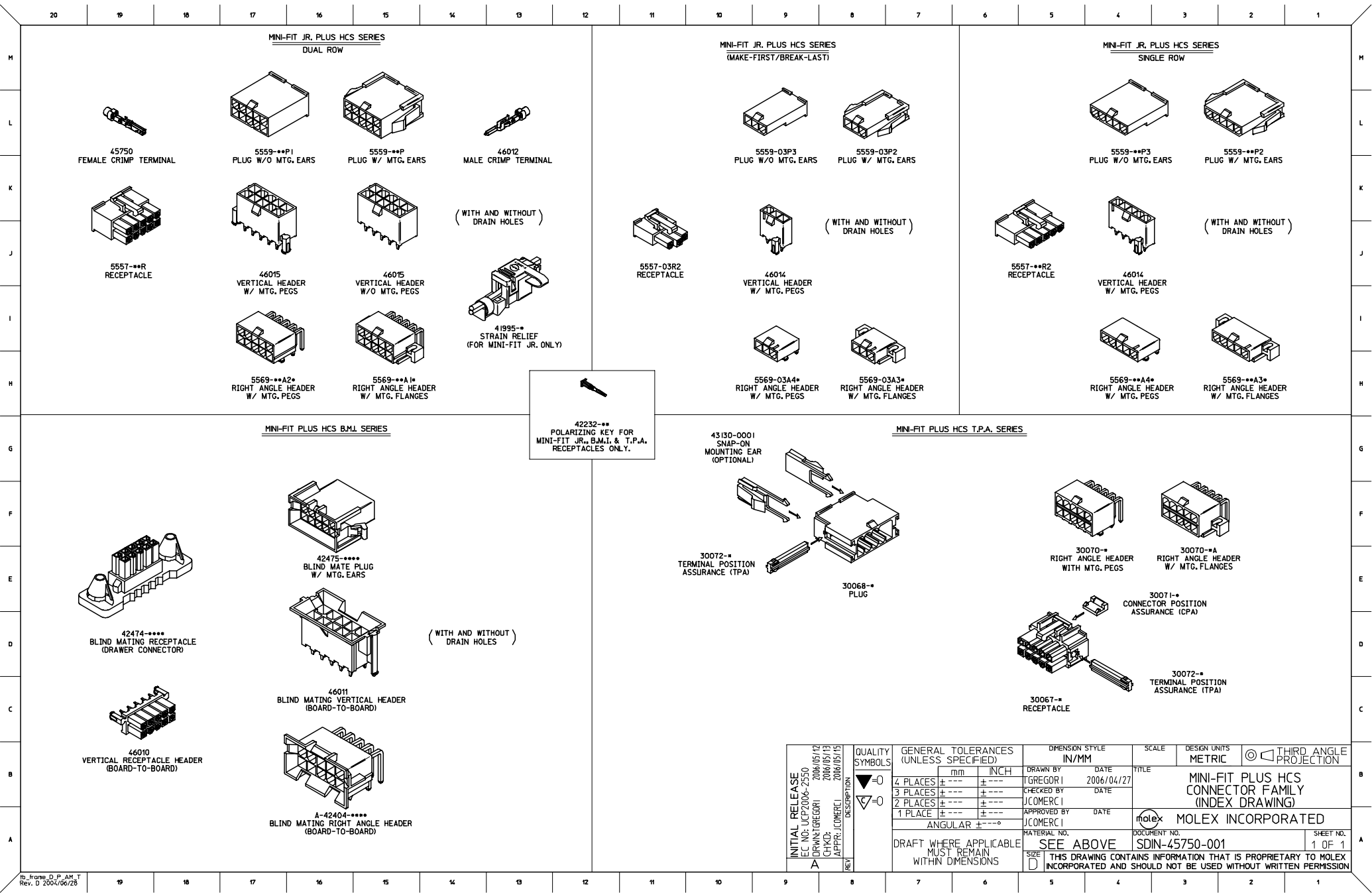
RoHS COMPLIANT


UPDATE NOTE 3 IEC NO: UCP2014-0298 DRAWN BY: CHYD:JELL 2013/07/22 APPROVED BY: TH 2013/08/16 G2	DESCRIPTION	QUALITY SYMBOLS ▽=0 ▽=0 ▽=0	GENERAL TOLERANCES (UNLESS SPECIFIED)		DIMENSION STYLE IN/MM		SCALE 10:1	DESIGN UNITS INCH	THIRD ANGLE PROJECTION	
			mm	INCH	DRAWN BY	DATE	TITLE			
			4 PLACES ±	---	---	SML	2004/01/30	FEMALE CRIMP TERMINAL, H.C.S.PLUS, MINI-FIT JR. SERIES		
			3 PLACES ±	---	±.010	CHECKED BY	DATE			
			2 PLACES ±	0.25	±.014	MMD	2004/01/30			
			1 PLACE ±	0.36	±---	APPROVED BY	DATE			
			0 PLACE ±	---	---	AP	2004/02/05			
			ANGULAR ±1/2°		MATERIAL NO.		DOCUMENT NO.		SHEET NO.	
			DRAFT WHERE APPLICABLE MUST REMAIN WITHIN DIMENSIONS		SEE CHART		SD-45750-001		1 OF 1	
					SIZE	THIS DRAWING CONTAINS INFORMATION THAT IS PROPRIETARY TO MOLEX INCORPORATED AND SHOULD NOT BE USED WITHOUT WRITTEN PERMISSION				

ib\_frame\_D\_P\_AM\_T  
Rev. G 2012/01/11



<b>CHANGE TITLE</b> EC NO: JCP2013-5276 DRAWN BY: DRKANDARSON CHKD: J.BELL APPR: S.Y.H 2014/04/08 2014/04/04 2014/04/09	<b>QUALITY SYMBOLS</b>  ∇=0 ∇=0 ∇=0	<b>GENERAL TOLERANCES (UNLESS SPECIFIED)</b>  <table border="1"> <thead> <tr> <th></th> <th>mm</th> <th>INCH</th> </tr> </thead> <tbody> <tr> <td>4 PLACES ±</td> <td>± ---</td> <td>± ---</td> </tr> <tr> <td>3 PLACES ±</td> <td>± .010</td> <td>± .010</td> </tr> <tr> <td>2 PLACES ±</td> <td>± 0.25</td> <td>± .014</td> </tr> <tr> <td>1 PLACE ±</td> <td>± 0.36</td> <td>± ---</td> </tr> <tr> <td>0 PLACE ±</td> <td>±</td> <td>±</td> </tr> </tbody> </table>		mm	INCH	4 PLACES ±	± ---	± ---	3 PLACES ±	± .010	± .010	2 PLACES ±	± 0.25	± .014	1 PLACE ±	± 0.36	± ---	0 PLACE ±	±	±	<b>DIMENSION STYLE</b> IN/MM	<b>SCALE</b> 10:1	<b>DESIGN UNITS</b> INCH	 <b>THIRD ANGLE PROJECTION</b>
				mm	INCH																			
			4 PLACES ±	± ---	± ---																			
			3 PLACES ±	± .010	± .010																			
			2 PLACES ±	± 0.25	± .014																			
1 PLACE ±	± 0.36	± ---																						
0 PLACE ±	±	±																						
		<table border="1"> <thead> <tr> <th>TITLE</th> <th></th> </tr> </thead> <tbody> <tr> <td> <b>FEMALE CRIMP TERMINAL</b>  <b>MINI-FIT PLUS</b>  <b>HIGH MATING CYCLE(46018)</b>    <b>molex</b> </td> <td></td> </tr> </tbody> </table>	TITLE		<b>FEMALE CRIMP TERMINAL</b> <b>MINI-FIT PLUS</b> <b>HIGH MATING CYCLE(46018)</b>  <b>molex</b>																			
TITLE																								
<b>FEMALE CRIMP TERMINAL</b> <b>MINI-FIT PLUS</b> <b>HIGH MATING CYCLE(46018)</b>  <b>molex</b>																								
<table border="1"> <thead> <tr> <th>DRAWN BY</th> <th>DATE</th> </tr> </thead> <tbody> <tr> <td>T.GREGOR I</td> <td>2005-08-17</td> </tr> <tr> <th>CHECKED BY</th> <th>DATE</th> </tr> <tr> <td>J.COMERC I</td> <td>2005-08-17</td> </tr> <tr> <th>APPROVED BY</th> <th>DATE</th> </tr> <tr> <td>J.COMERC I</td> <td>2005-08-17</td> </tr> </tbody> </table>	DRAWN BY	DATE	T.GREGOR I	2005-08-17	CHECKED BY	DATE	J.COMERC I	2005-08-17	APPROVED BY	DATE	J.COMERC I	2005-08-17	<table border="1"> <thead> <tr> <th>MATERIAL NO.</th> <th>DOCUMENT NO.</th> <th>SHEET NO.</th> </tr> </thead> <tbody> <tr> <td> <b>SEE CHART</b>            SIZE D         </td> <td> <b>SD-46018-001</b> </td> <td> <b>1 OF 1</b> </td> </tr> </tbody> </table>	MATERIAL NO.	DOCUMENT NO.	SHEET NO.	<b>SEE CHART</b> SIZE D	<b>SD-46018-001</b>	<b>1 OF 1</b>					
DRAWN BY	DATE																							
T.GREGOR I	2005-08-17																							
CHECKED BY	DATE																							
J.COMERC I	2005-08-17																							
APPROVED BY	DATE																							
J.COMERC I	2005-08-17																							
MATERIAL NO.	DOCUMENT NO.	SHEET NO.																						
<b>SEE CHART</b> SIZE D	<b>SD-46018-001</b>	<b>1 OF 1</b>																						
		<b>DRAFT WHERE APPLICABLE MUST REMAIN WITHIN DIMENSIONS</b>	<b>THIS DRAWING CONTAINS INFORMATION THAT IS PROPRIETARY TO MOLEX INCORPORATED AND SHOULD NOT BE USED WITHOUT WRITTEN PERMISSION</b>																					
<b>E1</b>	<b>REV</b>																							



INITIAL RELEASE EC NO: UCP2006-2550 DRAWN: GREGORI 2006/05/12 CHKD: CHKDC 2006/05/13 APPR: JCOMERC 2006/05/15	QUALITY SYMBOLS ▽=0 ▽=0	GENERAL TOLERANCES (UNLESS SPECIFIED)  mm INCH 4 PLACES ± ± ± ± 3 PLACES ± ± ± ± 2 PLACES ± ± ± ± 1 PLACE ± ± ± ± ANGULAR ± ± ± ±	DIMENSION STYLE IN/MM		SCALE	DESIGN UNITS METRIC	 THIRD ANGLE PROJECTION	MINI-FIT PLUS HCS CONNECTOR FAMILY (INDEX DRAWING)  MOLEX INCORPORATED			
			DRAWN BY TGREGORI	DATE 2006/04/27	MOLEX MOLEX INCORPORATED						
			CHECKED BY JCOMERC I	DATE							
			APPROVED BY JCOMERC I	DATE							
			MATERIAL NO.						DOCUMENT NO. SDIN-45750-001	SHEET NO. 1 OF 1	
			SIZE D						THIS DRAWING CONTAINS INFORMATION THAT IS PROPRIETARY TO MOLEX INCORPORATED AND SHOULD NOT BE USED WITHOUT WRITTEN PERMISSION		
DRAFT WHERE APPLICABLE MUST REMAIN WITHIN DIMENSIONS											