

# Thermocouple Connector Product Guide



International Thermocouple Colour Codes for Connector Bodies

TYPE	IEC	ANSI	JIS	TYPE
J				J
K				K
T				T
E				E
N				N
R/S				R/S
B				B
Cu (Copper)				Cu (Copper)

All THERMOCOUPLE connectors use true thermocouple alloys for optimum accuracy, Except for Type R, S & B which use compensating alloys.

Thermocouple Pins

Type	'+' Positive Pin	'-' Negative Pin
J	Iron	Copper Nickel
K	Nickel Chromium	Nickel Alloy
T	Copper	Copper Nickel
E	Nickel Chromium	Copper Nickel
N	Nickel / Chromium / Silicon	Nickel Silicon
R/S	Copper	Copper Alloy
B	Copper	Copper
CU	Copper	Copper

Due to their location in often adverse environments such as hot working zones of furnaces and machinery, temperature sensors are liable to corrosion and mechanical damage. The need for occasional replacement is inevitable and the use of suitable connectors permits error-free fast, positive and reliable interchange with no risk of dangerous cross connection.

These thermocouple plugs and sockets have a technical and practical advantage over other types when terminating thermocouple wires or compensating cable in a wide variety of sizes. The wires are sandwiched between plates of thermocouple compatible material with a clamping screw, accommodating from very fine wires to stranded cables (up to 0.75mm<sup>2</sup>).

The connectors are colour coded and polarised and will mate with other makes of plugs and sockets. They can be mounted directly on to sheaths of up to 3mm diameter in the case of the miniature version or 1/4" (6.35mm) with the standard version by means of the brass bush available.

The sockets can be supplied as in-line or panel mounting versions with rectangular or circular fascias. The connectors are ruggedly made of glass filled thermoplastic for reliable operation up to 220°C sustained temperature.

The use of thermocouple compatible material eliminates measurement error due to the interconnection and the bright ISA colour coded body ensures clear identity of the type of thermocouple in use.

- Miniature and standard connectors
- Compensated connections ensure high accuracy
- Types K, J, T, E, N, R/S or Copper Copper
- Colour coding ensures clear identification (IEC, ANSI & JIS available)
- Compatible with all other makes of equivalent connectors
- Polarised connector pins guarantee correct polarity
- Withstand high temperature, 220°C continuous
- Rugged construction
- In line or panel mounting connectors, single or multi-way
- Inexpensive
- PCB mounting available
- Duplex versions available
- Barrier terminal strips



[Click Here to View 3D Animation of Miniature Thermocouple Connector Plug](#)



**A** IEC Miniature Plug



**B** ANSI Miniature Plug



**C** JIS Miniature Plug

Type	'+' Contact	'-' Contact	A		B		C	
			IEC Colour Code		ANSI Colour Code		JIS Colour Code	
			Farnell Order Code	Newark Order Code	Farnell Order Code	Newark Order Code	Farnell Order Code	Newark Order Code
<b>K</b>	Nickel Chromium	Nickel Alloy	7086362	67C1559	2347116	06X4820	2347173	06X5578
<b>J</b>	Iron	Copper Nickel	151128	09WX7991	2347115	06X4813	2347172	06X5570
<b>T</b>	Copper	Copper Nickel	7086404	67C7084	2347117	-	-	-
<b>N</b>	Nickel / Chromium / Silicon	Nickel Silicon	7086430	67C7081	-	-	-	-
<b>R/S</b>	Copper	Copper Alloy	2347020	06X0398	-	-	-	-
<b>B</b>	Copper	Copper	2347018	-	-	-	-	-
<b>E</b>	Nickel Chromium	Copper Nickel	2347019	06X5499	-	-	-	-
<b>Cu</b>	Copper	Copper	-	-	-	-	-	-

[Click here to view schematic drawing](#)

[Click Here to View 3D Animation of Miniature Thermocouple Connector Socket](#)



**A**

**IEC Miniature Socket**



**B**

**ANSI Miniature Socket**



**C**

**JIS Miniature Socket**

Type	'+' Contact	'-' Contact	A		B		B	
			IEC Colour Code		ANSI Colour Code		JIS Colour Code	
			Farnell Order Code	Newark Order Code	Farnell Order Code	Newark Order Code	Farnell Order Code	Newark Order Code
<b>K</b>	Nickel Chromium	Nickel Alloy	8598282	38K2389	2347121	06X4819	2347175	06X5577
<b>J</b>	Iron	Copper Nickel	8598274	38K2385	2347119	06X4812	2347174	-
<b>T</b>	Copper	Copper Nickel	8598266	38K2394	2347122	06X4826	-	-
<b>N</b>	Nickel / Chromium / Silicon	Nickel Silicon	7086428	67C7079	-	-	-	-
<b>R/S</b>	Copper	Copper Alloy	2347023	06X0397	-	-	-	-
<b>B</b>	Copper	Copper	-	-	-	-	-	-
<b>E</b>	Nickel Chromium	Copper Nickel	2347022	06X5498	-	-	-	-
<b>Cu</b>	Copper	Copper	-	-	-	-	-	-

[Click here to view schematic drawing](#)

# Miniature Thermocouple Connectors – Quick-wire Plugs

[Click Here to View 3D Animation of Miniature Thermocouple Quick-wire Connector Plug](#)



**A**

**IEC Miniature Quick-wire Plugs**

**B**

**ANSI Miniature Quick-wire Plugs**

**C**

**JIS Miniature Quick-wire Plugs**

Type	'+' Contact	'-' Contact	A		B		C	
			IEC Colour Code		ANSI Colour Code		JIS Colour Code	
			Farnell Order Code	Newark Order Code	Farnell Order Code	Newark Order Code	Farnell Order Code	Newark Order Code
<b>K</b>	Nickel Chromium	Nickel Alloy	3810392	70C8872	2347124	06X4821	-	-
<b>J</b>	Iron	Copper Nickel	3810380	70C8868	-	-	2347176	-
<b>T</b>	Copper	Copper Nickel	3810410	70C8880	2347125	-	-	-
<b>N</b>	Nickel / Chromium / Silicon	Nickel Silicon	2347026	-	-	-	-	-
<b>R/S</b>	Copper	Copper Alloy	2347028	06X0399	-	-	-	-
<b>B</b>	Copper	Copper	-	-	-	-	-	-
<b>E</b>	Nickel Chromium	Copper Nickel	2347025	-	-	-	-	-
<b>Cu</b>	Copper	Copper	3810422	-	-	-	-	-

[Click here to view schematic drawing](#)

# Miniature Thermocouple Connectors – Quick-wire Sockets

[Click Here to View 3D Animation of Miniature Thermocouple Quick-wire Connector Socket](#)



**A**

**IEC Miniature Quick-wire Sockets**



**B**

**ANSI Miniature Quick-wire Sockets**



**C**

**JIS Miniature Quick-wire Sockets**

Type	‘+’ Contact	‘-’ Contact	A		B		C	
			IEC Colour Code		ANSI Colour Code		JIS Colour Code	
			Farnell Order Code	Newark Order Code	Farnell Order Code	Newark Order Code	Farnell Order Code	Newark Order Code
<b>K</b>	Nickel Chromium	Nickel Alloy	3810446	70C8871	2347127	06X4818	2347181	06X5576
<b>J</b>	Iron	Copper Nickel	3810434	-	-	-	-	-
<b>T</b>	Copper	Copper Nickel	3810460	70C8879	2347128	-	-	-
<b>N</b>	Nickel / Chromium / Silicon	Nickel Silicon	2347031	06X5509	-	-	-	-
<b>R/S</b>	Copper	Copper Alloy	2347032	06X0396	-	-	-	-
<b>B</b>	Copper	Copper	2347029	-	-	-	-	-
<b>E</b>	Nickel Chromium	Copper Nickel	2347030	-	-	-	-	-
<b>Cu</b>	Copper	Copper	3810471	70C8863	-	-	-	-

[Click here to view schematic drawing](#)

[Click Here to View Miniature Rectangular Thermocouple Connector Fascia Socket](#)



**A** IEC Miniature Rectangular Fascia Socket



**B** ANSI Miniature Rectangular Fascia Socket



**C** JIS Miniature Rectangular Fascia Socket

Type	'+' Contact	'-' Contact	A		B		C	
			IEC Colour Code		ANSI Colour Code		JIS Colour Code	
			Farnell Order Code	Newark Order Code	Farnell Order Code	Newark Order Code	Farnell Order Code	Newark Order Code
<b>K</b>	Nickel Chromium	Nickel Alloy	7086386	67C7077	2347130	06X4817	2347183	06X5575
<b>J</b>	Iron	Copper Nickel	-	-	2347129	06X4810	2347182	-
<b>T</b>	Copper	Copper Nickel	7086416	67C7083	2347132	06X4824	-	-
<b>N</b>	Nickel / Chromium / Silicon	Nickel Silicon	7086441	67C7080	-	-	-	-
<b>R/S</b>	Copper	Copper Alloy	2347035	06X0395	-	-	-	-
<b>B</b>	Copper	Copper	-	-	-	-	-	-
<b>E</b>	Nickel Chromium	Copper Nickel	2347034	-	-	-	-	-
<b>Cu</b>	Copper	Copper	-	-	-	-	-	-

[Click here to view schematic drawing](#)

# Miniature Thermocouple Connectors – Panel Mount with Stainless Steel Bracket

[Click Here to View 3D Animation of Miniature Panel Mount Thermocouple Connector with Stainless Steel Bracket](#)



**A**

**IEC Miniature Panel Mount  
with Stainless Steel Bracket**

**B**

**ANSI Miniature Panel Mount  
with Stainless Steel Bracket**

**C**

**JIS Miniature Panel Mount  
with Stainless Steel Bracket**

Type	'+' Contact	'-' Contact	A		B		C	
			IEC Colour Code		ANSI Colour Code		JIS Colour Code	
			Farnell Order Code	Newark Order Code	Farnell Order Code	Newark Order Code	Farnell Order Code	Newark Order Code
<b>K</b>	Nickel Chromium	Nickel Alloy	3810525	70C8874	2347134	06X4823	-	-
<b>J</b>	Iron	Copper Nickel	2347038	-	-	-	-	-
<b>T</b>	Copper	Copper Nickel	2347043	-	-	-	-	-
<b>N</b>	Nickel / Chromium / Silicon	Nickel Silicon	2347041	06X5512	-	-	-	-
<b>R/S</b>	Copper	Copper Alloy	-	-	-	-	-	-
<b>B</b>	Copper	Copper	-	-	-	-	-	-
<b>E</b>	Nickel Chromium	Copper Nickel	-	-	-	-	-	-
<b>Cu</b>	Copper	Copper	-	-	-	-	-	-

[Click here to view schematic drawing](#)

# Miniature Thermocouple Connectors – Quick-wire Panel Mount with Stainless Steel Bracket

[Click Here to View 3D Animation of Miniature Quick Wire Panel Mount Thermocouple Connector with Stainless Steel Bracket](#)



**A**

**IEC Miniature Quick-wire Panel Mount with Stainless Steel Bracket**

**B**

**ANSI Miniature Quick-wire Panel Mount with Stainless Steel Bracket**

**C**

**JIS Miniature Quick-wire Panel Mount with Stainless Steel**

Type	‘+’ Contact	‘-’ Contact	A		B		C	
			IEC Colour Code		ANSI Colour Code		JIS Colour Code	
			Farnell Order Code	Newark Order Code	Farnell Order Code	Newark Order Code	Farnell Order Code	Newark Order Code
<b>K</b>	Nickel Chromium	Nickel Alloy	8598304	38K2393	2347137	-	-	-
<b>J</b>	Iron	Copper Nickel	-	-	-	-	-	-
<b>T</b>	Copper	Copper Nickel	-	-	2347138	-	-	-
<b>N</b>	Nickel / Chromium / Silicon	Nickel Silicon	-	-	-	-	-	-
<b>R/S</b>	Copper	Copper Alloy	2347048	-	-	-	-	-
<b>B</b>	Copper	Copper	-	-	-	-	-	-
<b>E</b>	Nickel Chromium	Copper Nickel	-	-	-	-	-	-
<b>Cu</b>	Copper	Copper	-	-	-	-	-	-

[Click here to view schematic drawing](#)

[Click Here to View 3D Animation of PCB Mounting Thermocouple Connector Socket](#)



**A** IEC Miniature PCB Socket

**B** ANSI Miniature PCB Socket

**C** JIS Miniature PCB Socket

Type	'+' Contact	'-' Contact	A		B		C	
			IEC Colour Code		ANSI Colour Code		JIS Colour Code	
			Farnell Order Code	Newark Order Code	Farnell Order Code	Newark Order Code	Farnell Order Code	Newark Order Code
<b>K</b>	Nickel Chromium	Nickel Alloy	3810628	70C8873	2347140	06X4822	2347189	06X5580
<b>J</b>	Iron	Copper Nickel	2347053	06X5505	2347139	06X4815	-	-
<b>T</b>	Copper	Copper Nickel	2347056	06X5514	2347141	06X4829	-	-
<b>N</b>	Nickel / Chromium / Silicon	Nickel Silicon	-	-	-	-	-	-
<b>R/S</b>	Copper	Copper Alloy	-	-	-	-	-	-
<b>B</b>	Copper	Copper	2347050	06X5494	-	-	-	-
<b>E</b>	Nickel Chromium	Copper Nickel	-	-	-	-	-	-
<b>Cu</b>	Copper	Copper	-	-	-	-	-	-

[Click here to view schematic drawing](#)

# Standard Thermocouple Connectors – Plugs

[Click Here to View 3D Animation of Standard Thermocouple Connector Plug](#)



**A**

**IEC Standard Plug**

**B**

**ANSI Standard Plug**

**C**

**JIS Standard Plug**

Type	‘+’ Contact	‘-’ Contact	A		B		C	
			IEC Colour Code		ANSI Colour Code		JIS Colour Code	
			Farnell Order Code	Newark Order Code	Farnell Order Code	Newark Order Code	Farnell Order Code	Newark Order Code
<b>K</b>	Nickel Chromium	Nickel Alloy	7087925	69C1124	2347144	06X4854	-	-
<b>J</b>	Iron	Copper Nickel	-	-	2347142	-	2347190	-
<b>T</b>	Copper	Copper Nickel	3810215	-	2347145	-	-	-
<b>N</b>	Nickel / Chromium / Silicon	Nickel Silicon	2081266	-	-	-	-	-
<b>R/S</b>	Copper	Copper Alloy	7087950	-	-	-	-	-
<b>B</b>	Copper	Copper	-	-	-	-	-	-
<b>E</b>	Nickel Chromium	Copper Nickel	-	-	-	-	-	-
<b>Cu</b>	Copper	Copper	-	-	-	-	-	-

[Click here to view schematic drawing](#)

[Click Here to View 3D Animation of Standard Thermocouple Connector Socket](#)



**A**

**IEC Standard Sockets**

**B**

**ANSI Standard Sockets**

**C**

**JIS Standard Sockets**

Type	'+' Contact	'-' Contact	A		B		C	
			IEC Colour Code		ANSI Colour Code		JIS Colour Code	
			Farnell Order Code	Newark Order Code	Farnell Order Code	Newark Order Code	Farnell Order Code	Newark Order Code
<b>K</b>	Nickel Chromium	Nickel Alloy	7087937	69C1122	2347147	-	-	-
<b>J</b>	Iron	Copper Nickel	-	-	2347146	-	-	-
<b>T</b>	Copper	Copper Nickel	3810240	-	-	-	-	-
<b>N</b>	Nickel / Chromium / Silicon	Nickel Silicon	2081268	-	-	-	-	-
<b>R/S</b>	Copper	Copper Alloy	2347066	-	-	-	-	-
<b>B</b>	Copper	Copper	-	-	-	-	-	-
<b>E</b>	Nickel Chromium	Copper Nickel	-	-	-	-	-	-
<b>Cu</b>	Copper	Copper	-	-	-	-	-	-

[Click here to view schematic drawing](#)

# Standard Thermocouple Connectors – Quick-wire Plugs

[Click Here to View 3D Animation Standard Quick Wire Thermocouple Connector Plug](#)



**A**

**IEC Standard Quick-wire Plugs**



**B**

**ANSI Standard Quick-wire Plugs**



**C**

**JIS Standard Quick-wire Plugs**

Type	'+' Contact	'-' Contact	A		B		C	
			IEC Colour Code		ANSI Colour Code		JIS Colour Code	
			Farnell Order Code	Newark Order Code	Farnell Order Code	Newark Order Code	Farnell Order Code	Newark Order Code
<b>K</b>	Nickel Chromium	Nickel Alloy	3810276	70C8941	2347150	06X4856	-	-
<b>J</b>	Iron	Copper Nickel	3810264	-	-	06X4847	-	-
<b>T</b>	Copper	Copper Nickel	3810264	70C8938	-	-	-	-
<b>N</b>	Nickel / Chromium / Silicon	Nickel Silicon	2347069	06X5550	-	-	-	-
<b>R/S</b>	Copper	Copper Alloy	2347070	06X0407	-	-	-	-
<b>B</b>	Copper	Copper	-	-	-	-	-	-
<b>E</b>	Nickel Chromium	Copper Nickel	-	-	-	-	-	-
<b>Cu</b>	Copper	Copper	-	-	-	-	-	-

[Click here to view schematic drawing](#)

# Standard Thermocouple Connectors – Quick-wire Sockets

[Click Here to View 3D Animation Standard Quick Wire Thermocouple Connector Socket](#)



**A** IEC Standard Quick-wire Sockets



**B** ANSI Standard Quick-wire Sockets



**C** JIS Standard Quick-wire Sockets

Type	'+' Contact	'-' Contact	A		B		C	
			IEC Colour Code		ANSI Colour Code		JIS Colour Code	
			Farnell Order Code	Newark Order Code	Farnell Order Code	Newark Order Code	Farnell Order Code	Newark Order Code
<b>K</b>	Nickel Chromium	Nickel Alloy	3810331	70C8940	2347153	-	-	-
<b>J</b>	Iron	Copper Nickel	3810320	-	2347152	-	-	-
<b>T</b>	Copper	Copper Nickel	-	-	-	-	-	-
<b>N</b>	Nickel / Chromium / Silicon	Nickel Silicon	2347074	-	-	-	-	-
<b>R/S</b>	Copper	Copper Alloy	2347075	-	-	-	-	-
<b>B</b>	Copper	Copper	-	-	-	-	-	-
<b>E</b>	Nickel Chromium	Copper Nickel	-	-	-	-	-	-
<b>Cu</b>	Copper	Copper	-	-	-	-	-	-

[Click here to view schematic drawing](#)

[Click Here to View 3D Animation Standard Rectangular Thermocouple Connector Fascia Socket](#)



**A**

**IEC Standard Fascia Sockets**

**B**

**ANSI Standard Fascia Sockets**

**C**

**JIS Standard Fascia Sockets**

Type	'+' Contact	'-' Contact	A		B		C	
			IEC Colour Code		ANSI Colour Code		JIS Colour Code	
			Farnell Order Code	Newark Order Code	Farnell Order Code	Newark Order Code	Farnell Order Code	Newark Order Code
<b>K</b>	Nickel Chromium	Nickel Alloy	7087949	-	2347157	-	-	-
<b>J</b>	Iron	Copper Nickel	-	-	-	-	-	-
<b>T</b>	Copper	Copper Nickel	3810495	-	2347158	-	-	-
<b>N</b>	Nickel / Chromium / Silicon	Nickel Silicon	-	-	-	-	-	-
<b>R/S</b>	Copper	Copper Alloy	2347081	-	-	-	-	-
<b>B</b>	Copper	Copper	-	-	-	-	-	-
<b>E</b>	Nickel Chromium	Copper Nickel	-	-	-	-	-	-
<b>Cu</b>	Copper	Copper	-	-	-	-	-	-

[Click here to view schematic drawing](#)

# Standard Thermocouple Connectors – Panel Mount with Stainless Steel Bracket

[Click Here to View 3D Animation Standard Panel Mount Thermocouple Connector with Stainless Steel Bracket](#)



**A**

**IEC Standard Panel Mount  
with Stainless Steel Bracket**

**B**

**ANSI Standard Panel Mount  
with Stainless Steel Bracket**

**C**

**JIS Standard Panel Mount  
with Stainless Steel Bracket**

Type	'+' Contact	'-' Contact	A		B		C	
			IEC Colour Code		ANSI Colour Code		JIS Colour Code	
			Farnell Order Code	Newark Order Code	Farnell Order Code	Newark Order Code	Farnell Order Code	Newark Order Code
<b>K</b>	Nickel Chromium	Nickel Alloy	3810574	70C8942	-	-	-	-
<b>J</b>	Iron	Copper Nickel	2347084	-	-	-	-	-
<b>T</b>	Copper	Copper Nickel	-	-	2347161	-	-	-
<b>N</b>	Nickel / Chromium / Silicon	Nickel Silicon	-	-	-	-	-	-
<b>R/S</b>	Copper	Copper Alloy	-	-	-	-	-	-
<b>B</b>	Copper	Copper	-	-	-	-	-	-
<b>E</b>	Nickel Chromium	Copper Nickel	-	-	-	-	-	-
<b>Cu</b>	Copper	Copper	-	-	-	-	-	-

[Click here to view schematic drawing](#)

# Standard Thermocouple Connectors – Quick-wire Panel Mount with Stainless Steel Bracket

[Click Here to View 3D Animation Standard Quick Wire Panel Mount Thermocouple Connector with Stainless Steel Bracket](#)



**A** IEC Standard Quick-wire Panel Mount with Stainless Steel Bracket



**B** ANSI Standard Quick-wire Panel Mount with Stainless Steel Bracket



**C** JIS Standard Quick-wire Panel Mount with Stainless Steel Bracket

Type	'+' Contact	'-' Contact	A		B		C	
			IEC Colour Code		ANSI Colour Code		JIS Colour Code	
			Farnell Order Code	Newark Order Code	Farnell Order Code	Newark Order Code	Farnell Order Code	Newark Order Code
<b>K</b>	Nickel Chromium	Nickel Alloy	-	-	-	-	-	-
<b>J</b>	Iron	Copper Nickel	-	-	-	-	-	-
<b>T</b>	Copper	Copper Nickel	-	-	-	-	-	-
<b>N</b>	Nickel / Chromium / Silicon	Nickel Silicon	-	-	-	-	-	-
<b>R/S</b>	Copper	Copper Alloy	-	-	-	-	-	-
<b>B</b>	Copper	Copper	-	-	-	-	-	-
<b>E</b>	Nickel Chromium	Copper Nickel	-	-	-	-	-	-
<b>Cu</b>	Copper	Copper	-	-	-	-	-	-

[Click here to view schematic drawing](#)

[Click Here to View 3D Animation Standard Thermocouple Connector Duplex Plug](#)



**A**

**IEC Standard Duplex Plug**

**B**

**ANSI Standard Duplex Plug**

**C**

**JIS Standard Duplex Plug**

Type	'+' Contact	'-' Contact	A		B		C	
			IEC Colour Code		ANSI Colour Code		JIS Colour Code	
			Farnell Order Code	Newark Order Code	Farnell Order Code	Newark Order Code	Farnell Order Code	Newark Order Code
<b>K</b>	Nickel Chromium	Nickel Alloy	2347103	-	-	-	-	-
<b>J</b>	Iron	Copper Nickel	-	-	-	-	-	-
<b>T</b>	Copper	Copper Nickel	-	-	-	-	-	-
<b>N</b>	Nickel / Chromium / Silicon	Nickel Silicon	-	-	-	-	-	-
<b>R/S</b>	Copper	Copper Alloy	-	-	-	-	-	-
<b>B</b>	Copper	Copper	-	-	-	-	-	-
<b>E</b>	Nickel Chromium	Copper Nickel	-	-	-	-	-	-
<b>Cu</b>	Copper	Copper	-	-	-	-	-	-

[Click here to view schematic drawing](#)

# Standard Thermocouple Connectors – Duplex Socket

[Click Here to View 3D Animation Standard Thermocouple Connector Duplex Socket](#)



**A**

**IEC Standard Duplex Socket**

**B**

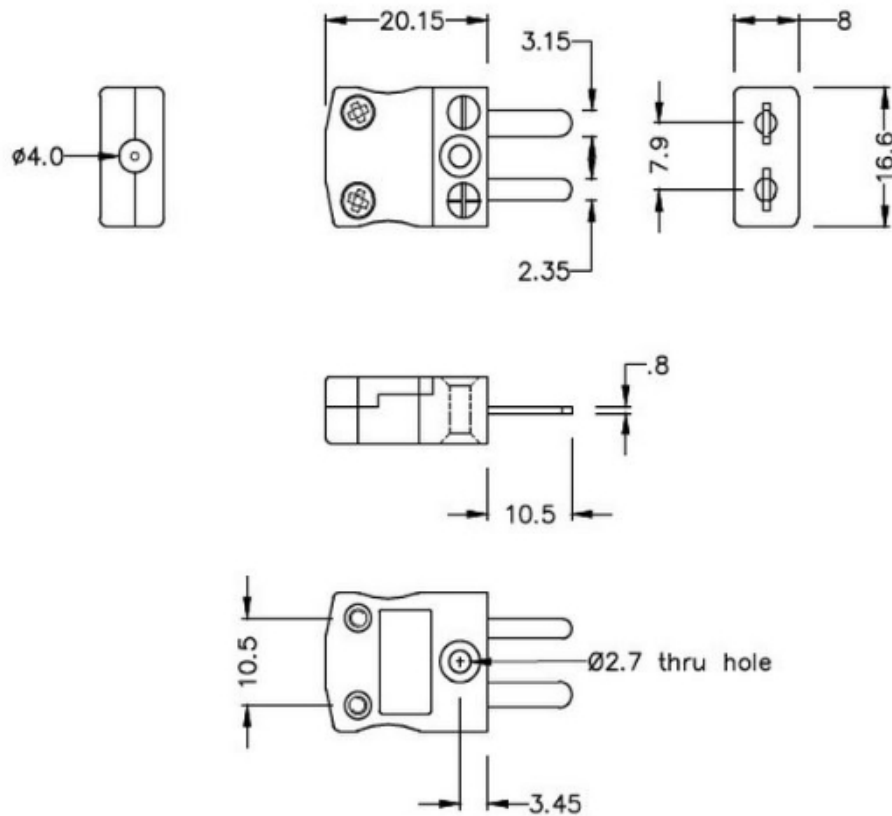
**ANSI Standard Duplex Socket**

**C**

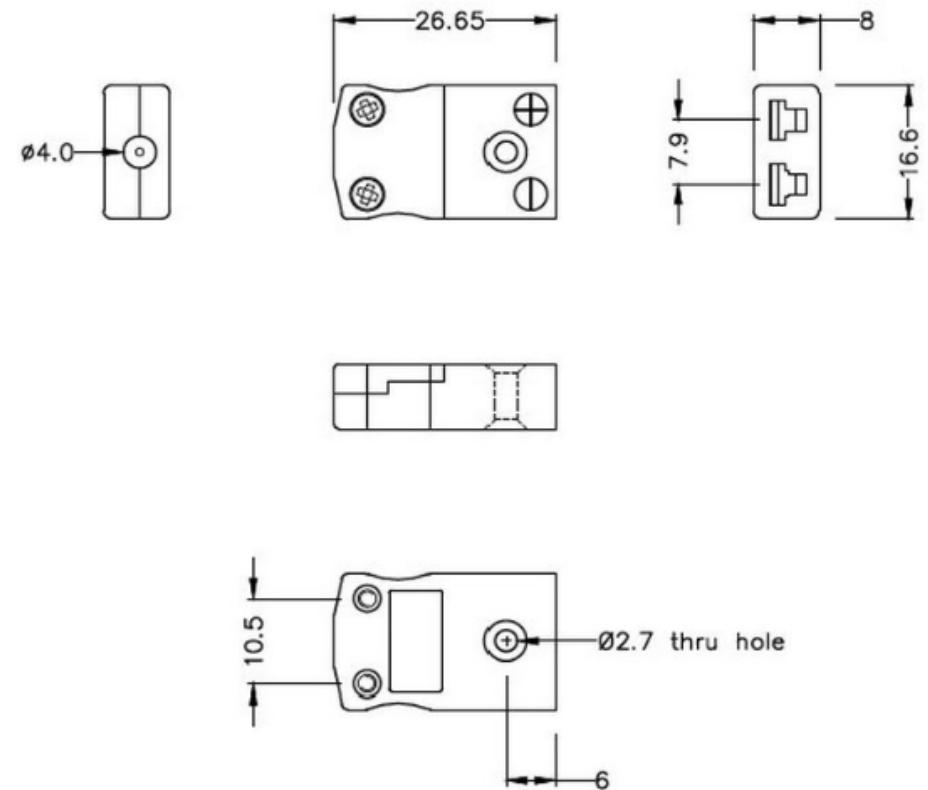
**JIS Standard Duplex Socket**

Type	‘+’ Contact	‘-’ Contact	A		B		C	
			IEC Colour Code		ANSI Colour Code		JIS Colour Code	
			Farnell Order Code	Newark Order Code	Farnell Order Code	Newark Order Code	Farnell Order Code	Newark Order Code
<b>K</b>	Nickel Chromium	Nickel Alloy	-	-	-	-	-	-
<b>J</b>	Iron	Copper Nickel	-	-	-	-	-	-
<b>T</b>	Copper	Copper Nickel	-	-	-	-	-	-
<b>N</b>	Nickel / Chromium / Silicon	Nickel Silicon	-	-	-	-	-	-
<b>R/S</b>	Copper	Copper Alloy	-	-	-	-	-	-
<b>B</b>	Copper	Copper	-	-	-	-	-	-
<b>E</b>	Nickel Chromium	Copper Nickel	-	-	-	-	-	-
<b>Cu</b>	Copper	Copper	-	-	-	-	-	-

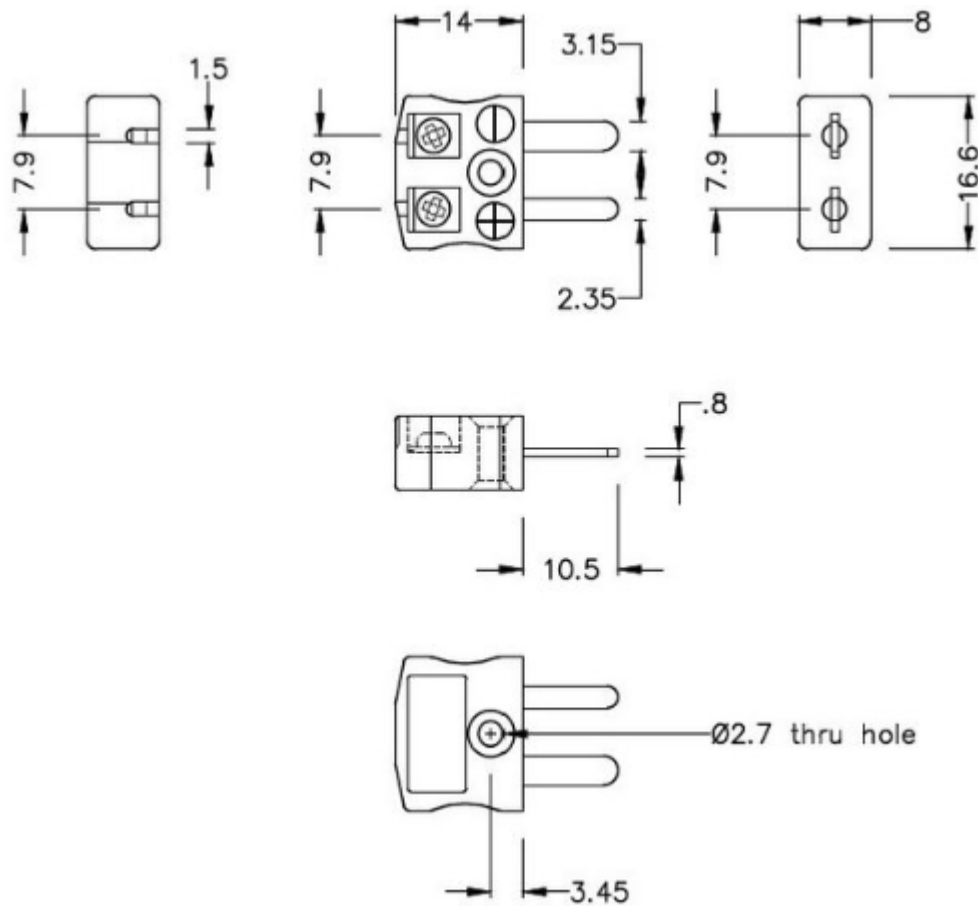
[Click here to view schematic drawing](#)



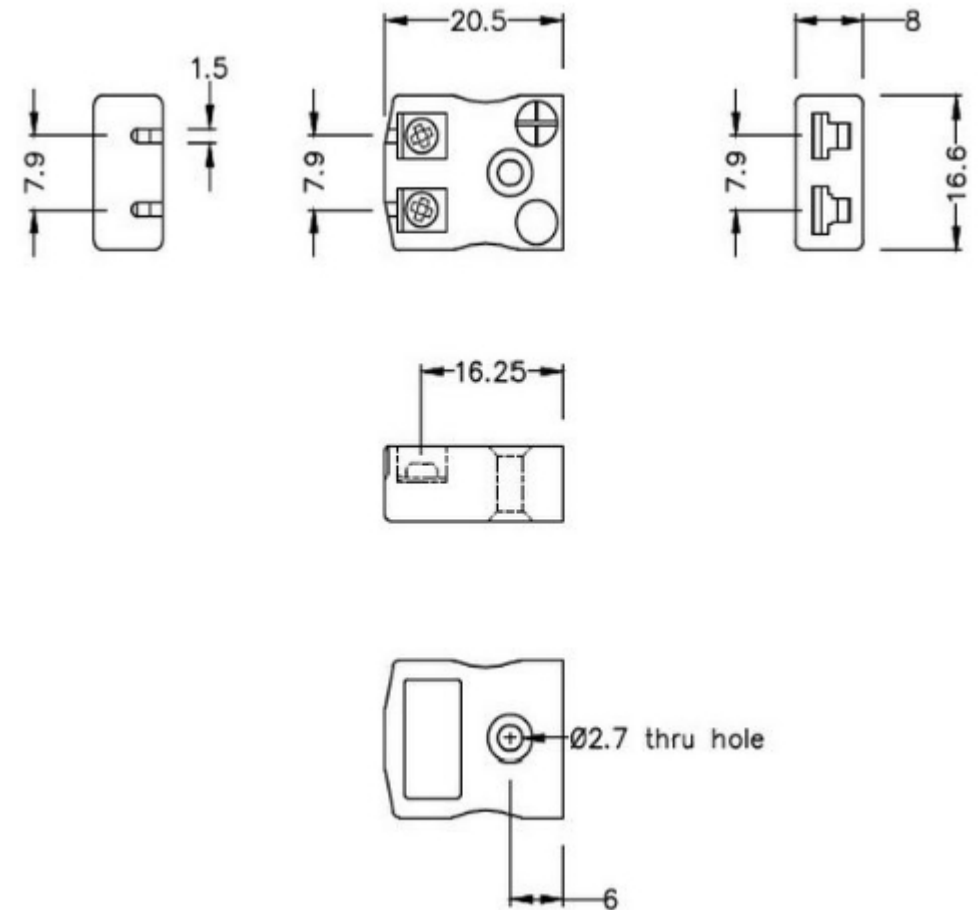
[Click here to view Miniature Thermocouple Connectors - Plugs](#)



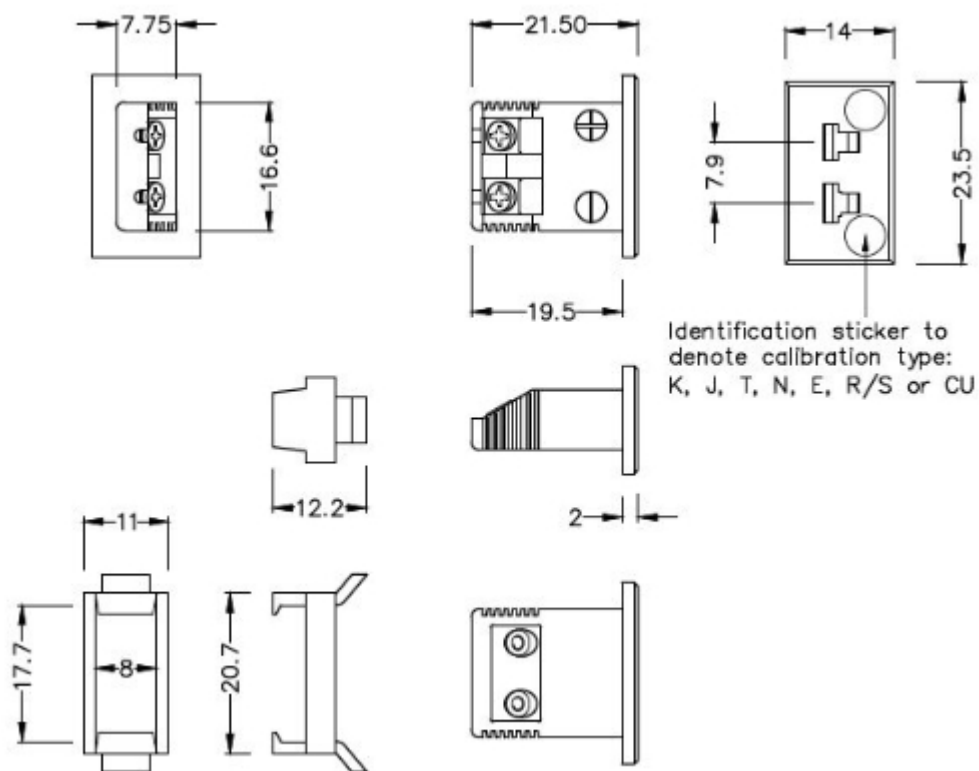
[Click here to view Miniature Thermocouple Connectors - Sockets](#)



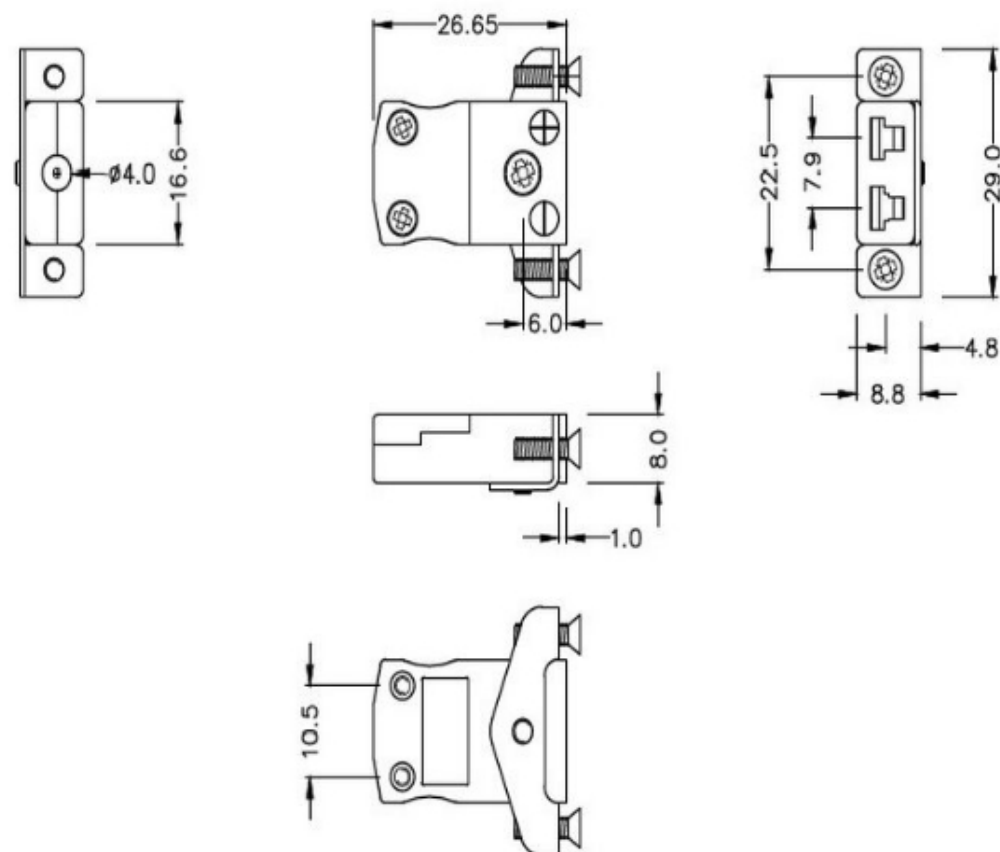
[Click here to view Miniature Thermocouple Connectors - Quick-wire Plugs](#)



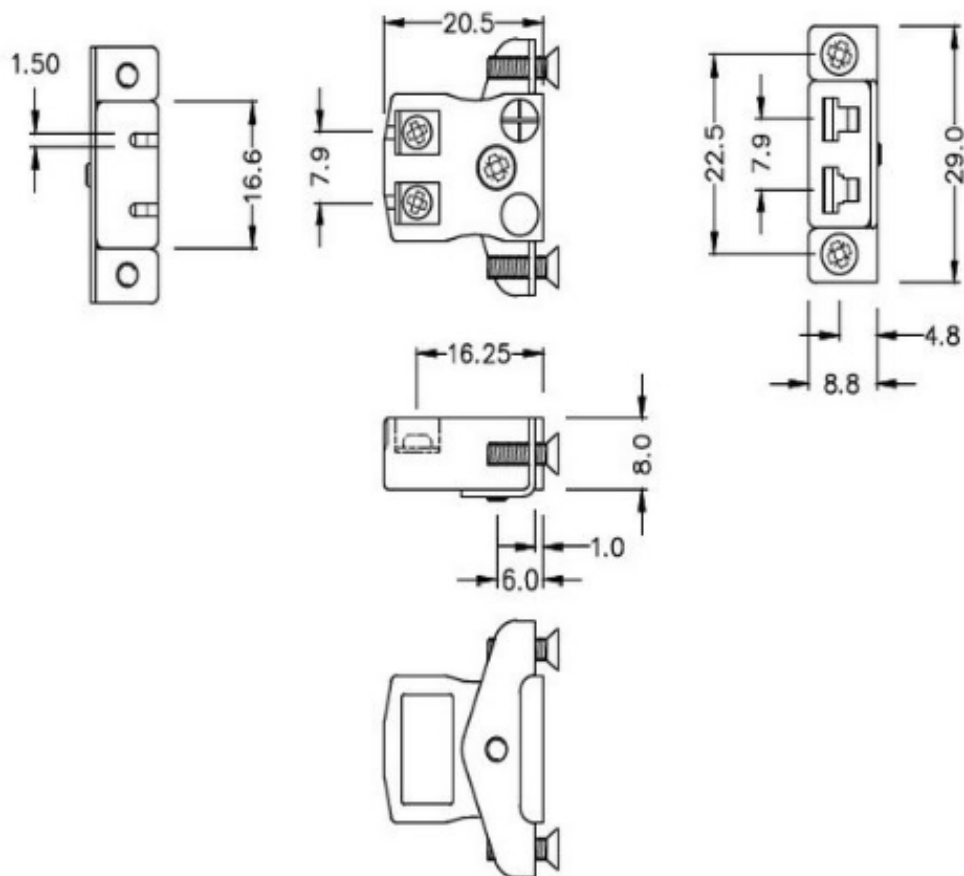
[Click here to view Miniature Thermocouple Connectors - Quick-wire Sockets](#)



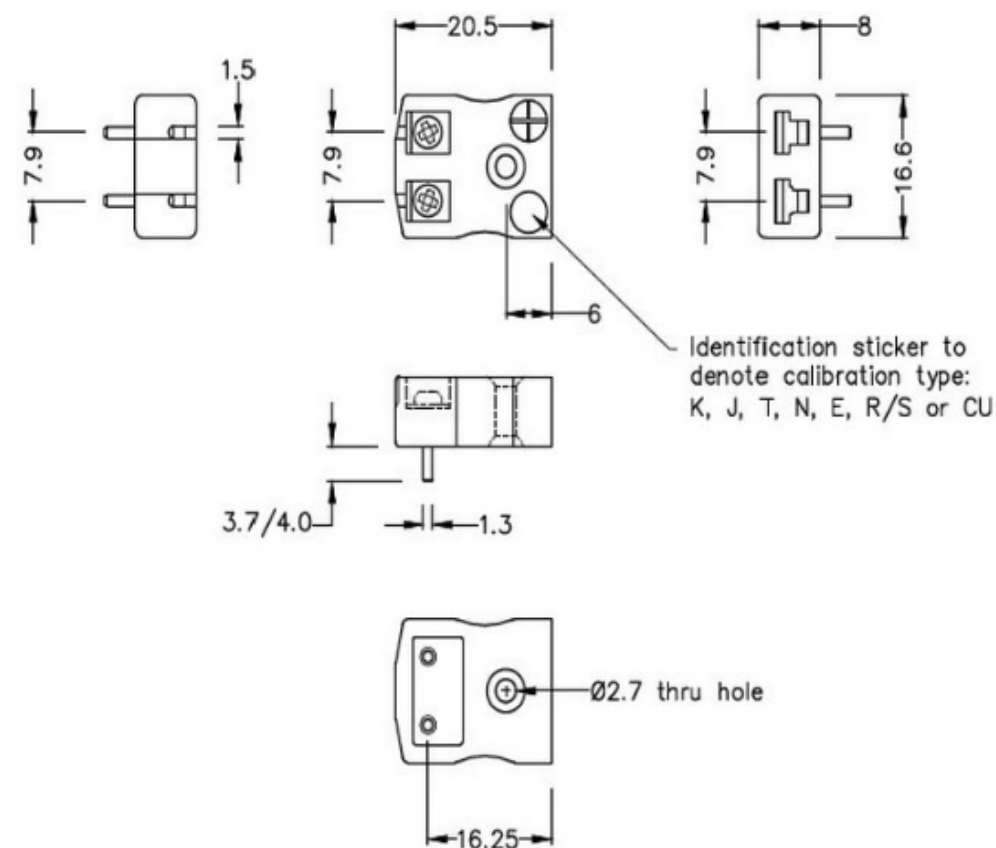
[Click here to view Miniature Thermocouple Connectors - Rectangular Fascia Socket](#)



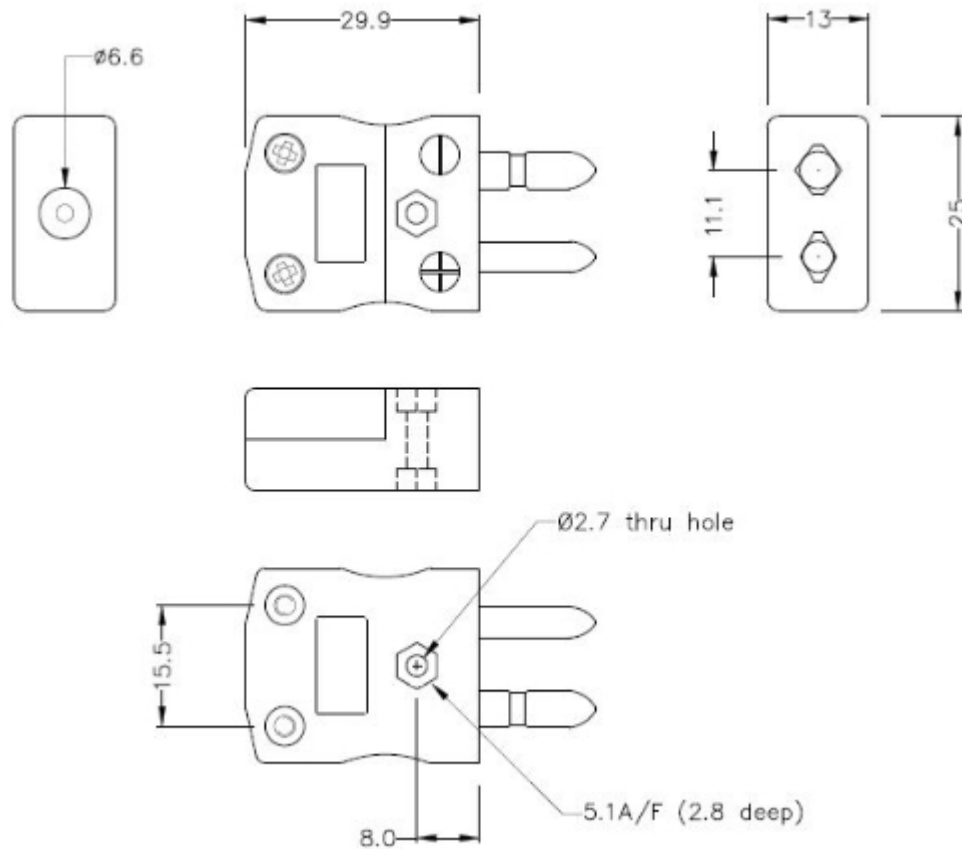
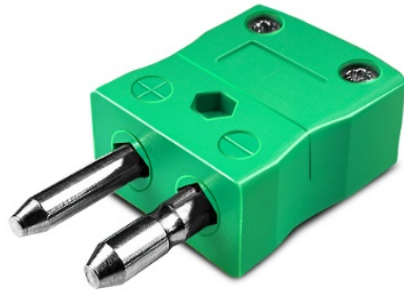
[Click here to view Miniature Thermocouple Connectors - Panel Mount with Stainless Steel Bracket](#)



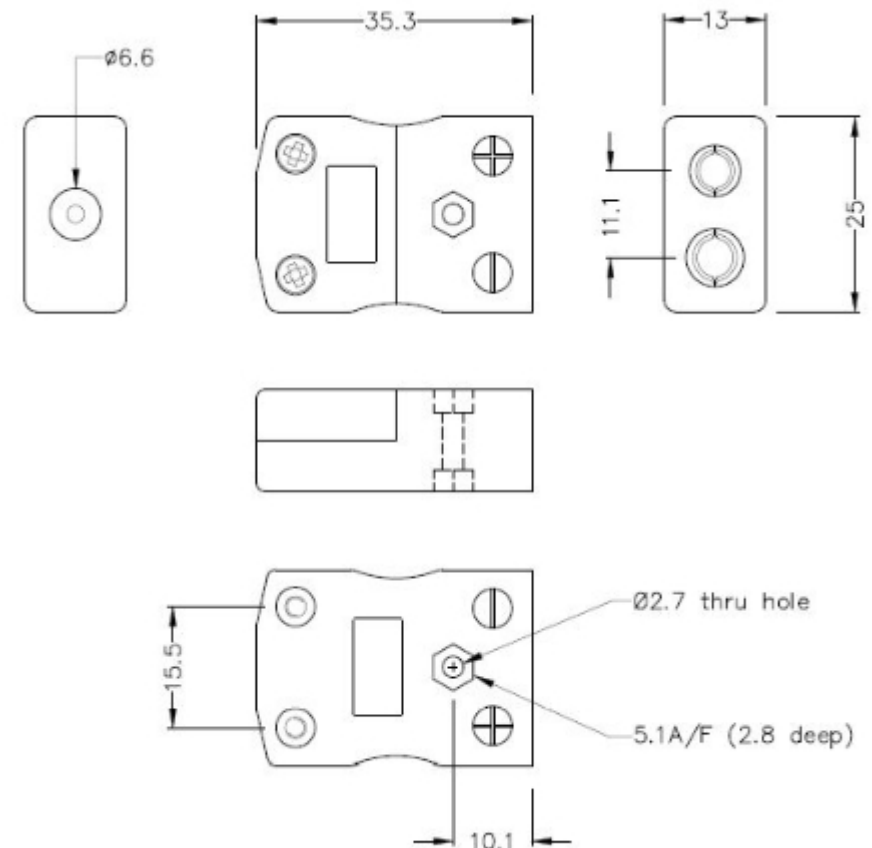
[Click here to view Miniature Thermocouple Connectors - Quick-wire Panel Mount with Stainless Steel Bracket](#)



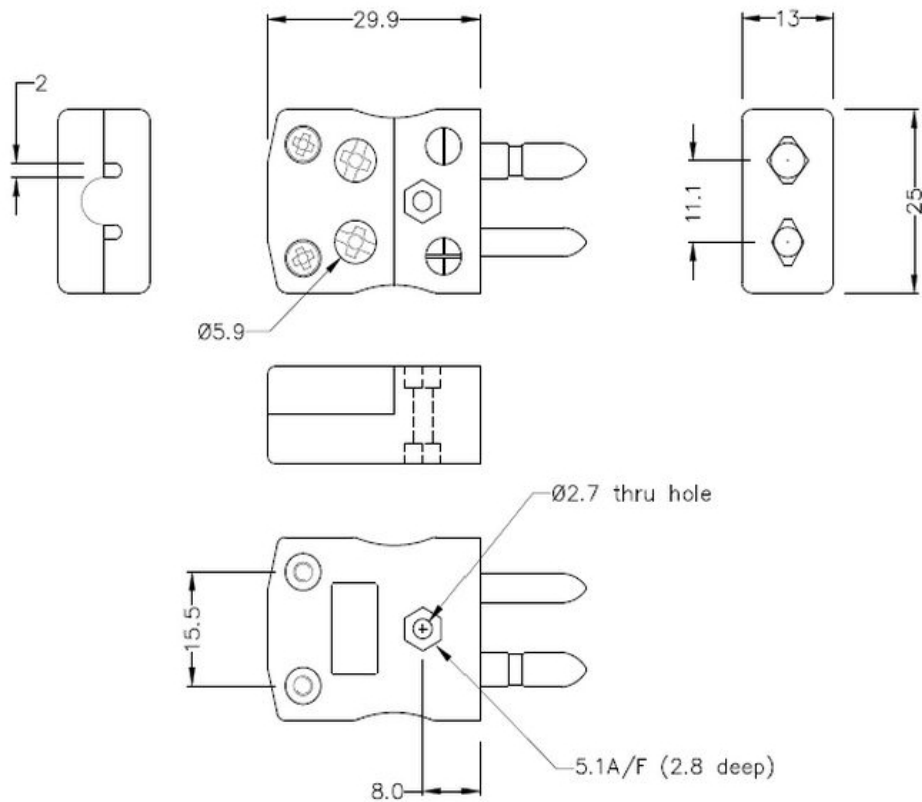
[Click here to view Miniature Thermocouple Connectors - PCB Socket](#)



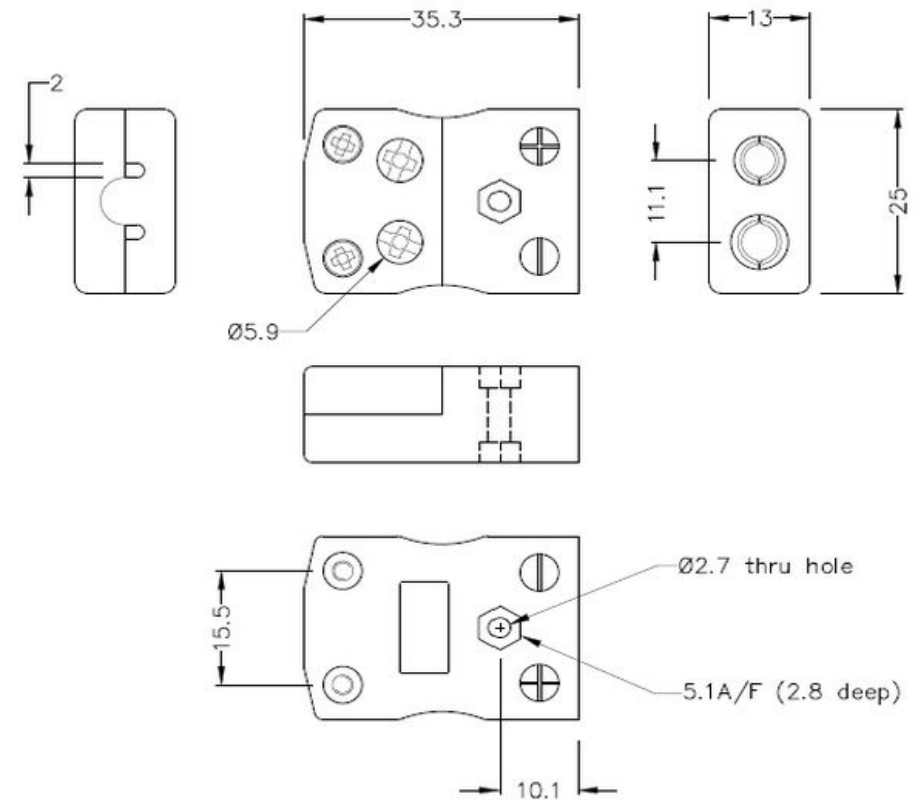
[Click here to view Standard Thermocouple Connectors - Plugs](#)



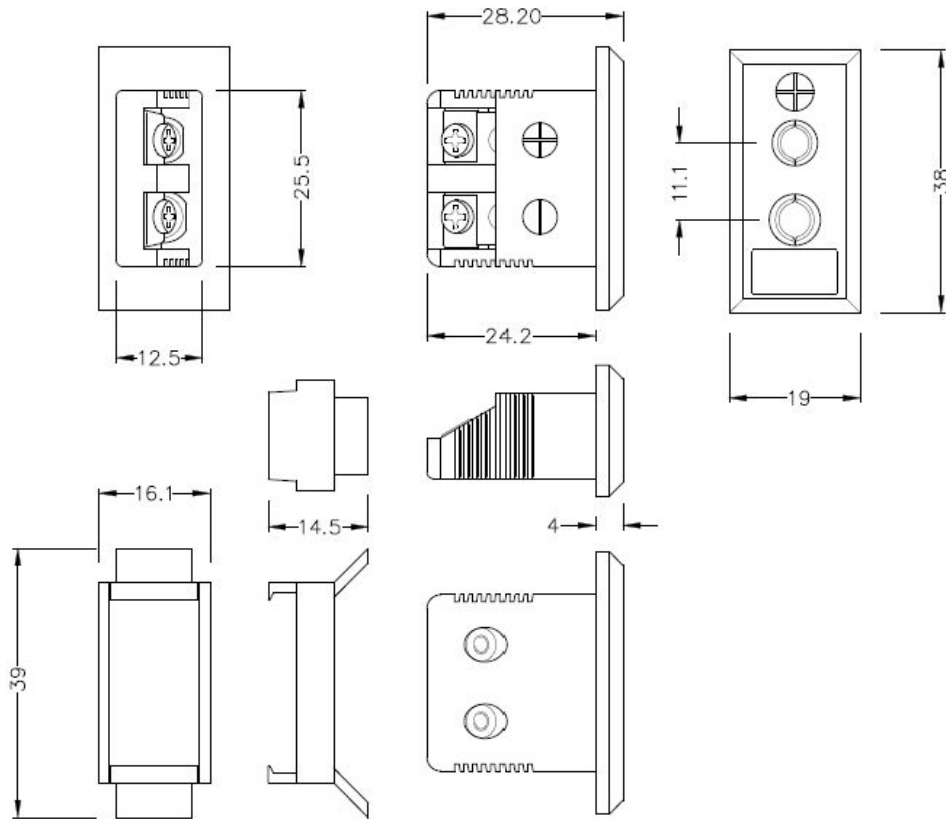
[Click here to view Standard Thermocouple Connectors - Sockets](#)



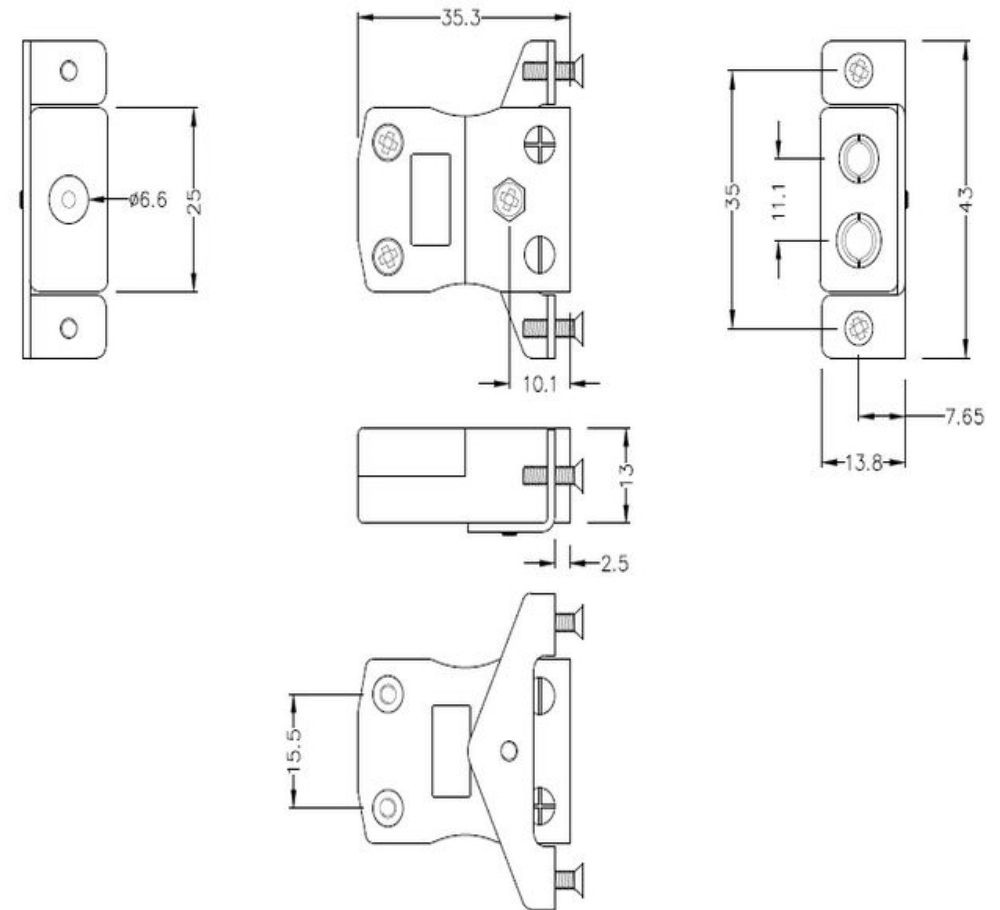
[Click here to view Standard Thermocouple Connectors - Quick-wire Plugs](#)



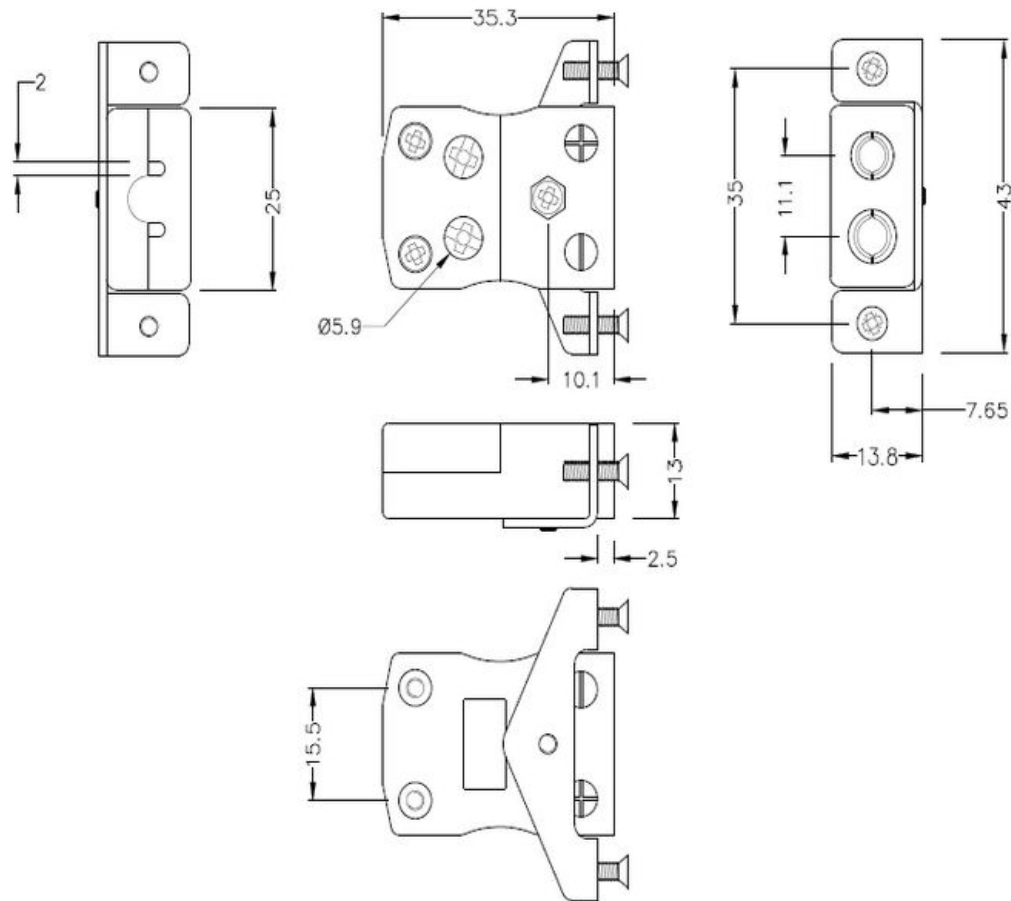
[Click here to view Standard Thermocouple Connectors - Quick-wire Sockets](#)



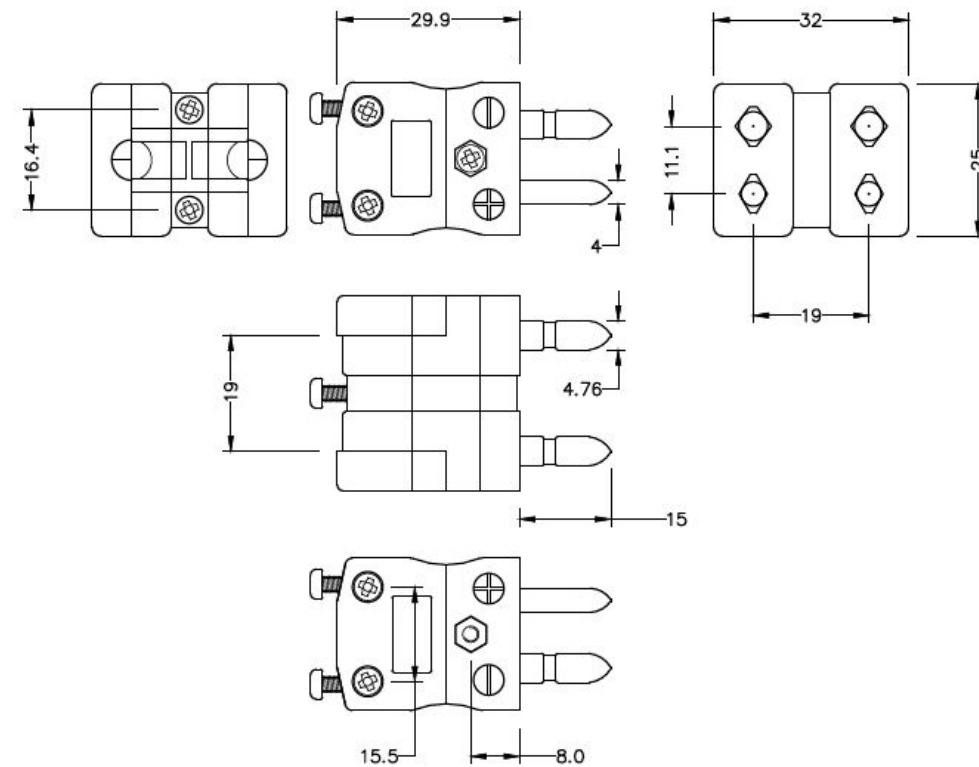
[Click here to view Standard Thermocouple Connectors - Fascia Sockets](#)



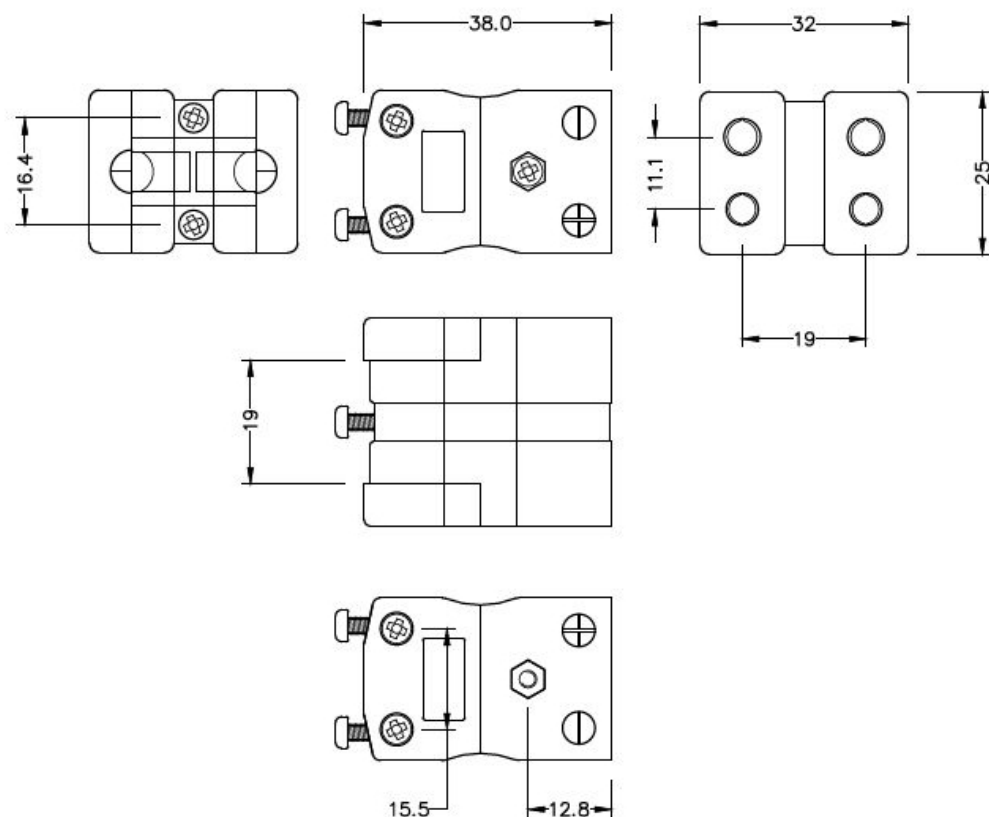
[Click here to view Standard Thermocouple Connectors - Panel Mount with Stainless Steel Bracket](#)



[Click here to view Standard Thermocouple Connectors - Quick-wire Panel Mount with Stainless Steel Bracket](#)



[Click here to view Standard Thermocouple Connectors - Duplex Plug](#)



[Click here to view Standard Thermocouple Connectors - Duplex Socket](#)

## International Thermocouple Colour Codes For Connector Bodies

TYPE	IEC	ANSI	JIS	TYPE
J				J
K				K
T				T
E				E
N				N
R/S				R/S
B				B
Cu (Copper)				Cu (Copper)

All Labfacility connectors use true thermocouple alloys for optimum accuracy except for Type R, S & B which use compensating alloys.

Go to Farnell or Newark websites  
to see our 4 product guides

