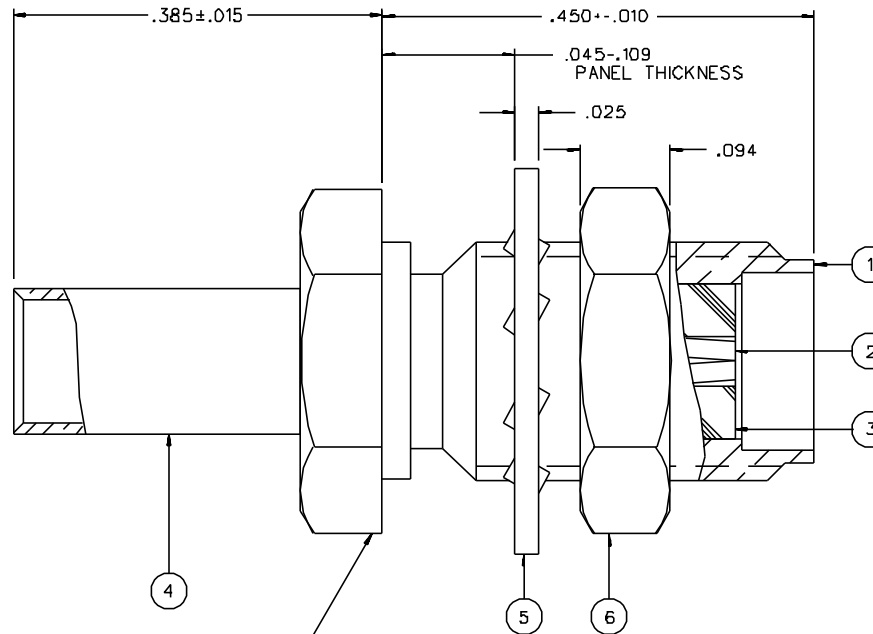


| PART NUMBER | ITEM ① BODY | ITEM ② CONTACT | ITEM ③ INSULATOR | ITEM ④ CRIMP SLEEVE | ITEM ⑤ LOCKWASHER | ITEM ⑥ NUT |
|--------------|---|--|---------------------|--|---|---|
| 142-0303-411 | BRASS GOLD PL .00001 MIN OVER NICKEL PL .00005 MIN OVER COPPER PL .00005 MIN | BERYLLIUM COPPER GOLD PL .00005 MIN OVER NICKEL PL .00005 MIN OVER COPPER PL .00005 MIN | TEFLON | COPPER GOLD PL .00001 MIN OVER NICKEL PL .00005 MIN OVER COPPER PL .00005 MIN | PHOSPHOR BRONZE GOLD PL .00001 MIN OVER NICKEL PL .00005 MIN OVER COPPER PL .00005 MIN | BRASS GOLD PL .00001 MIN OVER NICKEL PL .00005 MIN OVER COPPER PL .00005 MIN |
| 142-0303-416 | BRASS NICKEL PL .0001 MIN OVER COPPER PL .00005 MIN | BERYLLIUM COPPER GOLD PL .00005 MIN OVER NICKEL PL .00005 MIN OVER COPPER PL .00005 MIN | TEFLON | COPPER NICKEL PL .0001 MIN OVER COPPER PL .00005 MIN | PHOSPHOR BRONZE NICKEL PL .0001 MIN OVER COPPER PL .00005 MIN | BRASS NICKEL PL .0001 MIN OVER COPPER PL .00005 MIN |
| 142-0303-417 | BRASS NICKEL PL .0001 MIN OVER COPPER PL .00005 MIN | BERYLLIUM COPPER GOLD PL .00005 MIN OVER NICKEL PL .00005 MIN OVER COPPER PL .00005 MIN | TEFLON | COPPER NICKEL PL .0001 MIN OVER COPPER PL .00005 MIN | PHOSPHOR BRONZE NICKEL PL .0001 MIN OVER COPPER PL .00005 MIN | BRASS NICKEL PL .0001 MIN OVER COPPER PL .00005 MIN |



NOTES:

1. SPECIFICATIONS:

IMPEDANCE: 50 OHMS
 FREQUENCY RANGE: 0-12.4 GHz
 VSWR: 1.15-.02 F MAX (F IN GHz)
 WORKING VOLTAGE: 250 VRMS MAX AT SEA LEVEL
 DIELECTRIC WITHSTANDING VOLTAGE: 750 VRMS MIN AT SEA LEVEL
 INSULATION RESISTANCE: 5000 MEGOHM MIN
 CONTACT RESISTANCE:
 CENTER CONTACT - INITIAL 3.0 MILLIOHM MAX, AFTER ENVIRONMENTAL 4.0 MILLIOHM MAX
 OUTER CONDUCTOR - INITIAL 2.0 MILLIOHM MAX, AFTER ENVIRONMENTAL NOT APPLICABLE
 BODY TO CABLE - 0.5 MILLIOHM MAX (GOLD PLATED)
 5.0 MILLIOHM MAX (NICKEL PLATED)
 CORONA LEVEL: 190 VOLTS MIN AT 70,000 FEET
 INSERTION LOSS: .06/F dB MAX (F IN GHz) AT 6 GHz
 RF LEAKAGE: -60 DB MIN AT 2.5 GHz
 RF HIGH POTENTIAL WITHSTANDING VOLTAGE: 500 VRMS MIN AT 4 AND 7 MHz

MECHANICAL:

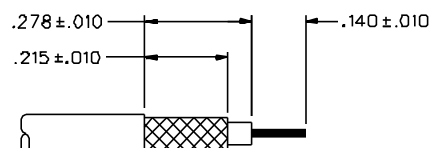
ENGAGE/DISENGAGE TORQUE: 2 INCH POUNDS MAX
 MATING TORQUE: 7-10 INCH POUNDS
 COUPLING PROOF TORQUE: NOT APPLICABLE
 COUPLING NUT RETENTION: NOT APPLICABLE
 CONTACT RETENTION: 6 LBS MIN
 CABLE ACCEPTABILITY: RG 188/U, RG 316/U, RG 181/U, RG 174/U
 CABLE HEX CRIMP SIZE: .128
 CONTACT CRIMP TOOL: MIL M22520/1-01
 CABLE RETENTION: 20 LBS MIN AXIAL FORCE
 DURABILITY: 500 CYCLES MIN

ENVIRONMENTAL:

(MEETS OR EXCEEDS THE APPLICABLE PARAGRAPH OF MIL-C-39012)
 THERMAL SHOCK: MIL-STD-202, METHOD 107, CONDITION B, EXCEPT 85° C HIGH TEMP
 OPERATING TEMPERATURE: -65° C TO 165° C
 CORROSION: MIL-STD-202, METHOD 101, CONDITION B
 SHOCK: MIL-STD-202, METHOD 213, CONDITION I
 VIBRATION: MIL-STD-202, METHOD 204, CONDITION D
 MOISTURE RESISTANCE: MIL-STD-202, METHOD 106

MOUNTING HOLE

4:1



CABLE STRIP DIMENSIONS

4:1


| | | | | | | | | | |
|--|---------|-----------|---|---|--|--|--|---------|-------|
| DRAWING NO. | | | | | | | | | |
| C - 142-0303-411/420 | | | | | | | | | |
| 0 | | REVISIONS | | | | | | | |
| ENGINEERING RELEASE | | | | | | | | | |
| 1 | B-7-92 | R | H | B | | | | B-11-92 | |
| | | | | | | | | ECO | 41156 |
| ADDED: P/N 142-0303-417 | | | | | | | | | |
| 2 | 7-14-93 | R | H | B | | | | 7-15-93 | |
| | | | | | | | | ECO | 41950 |
| VERSION UPDATE | | | | | | | | | |
| ***** REVISION NUMBER FOLLOWED BY AN ALPHA ***** | | | | | | | | | |
| ***** CHARACTER INDICATES DRAWING CLARIFICATION OR PART NUMBER ADDITION ONLY ***** | | | | | | | | | |
| 2a | 4-18-95 | R | H | B | | | | ECN | 43194 |
| PHOSPHOR BRONZE WAS BRASS (2X) | | | | | | | | | |
| LOCK WAS FLAT, .109 WAS .125 | | | | | | | | | |
| .025 WAS .032, .094 WAS .082 | | | | | | | | | |
| DELETED: MATING ENGAGEMENT CELL | | | | | | | | | |
| 3 | 1-24-01 | R | H | B | | | | 4-9-02 | |
| | | | | | | | | ECN | 47742 |

CUSTOMER DRAWING

THIS DRAWING TO BE INTERPRETED
PER ANSI Y 14.5M - 1982

"μSTATION"

COMPANY CONFIDENTIAL

| | | | |
|--------------------------------------|--------------|---------|--|
| TOLERANCE UNLESS OTHERWISE SPECIFIED | DRAWN BY | DATE |  299 Johnson Ave. P.O. Box 1732 Waseca, MN 56093-0832 |
| | TAK | 5-14-92 | |
| DECIMALS | CHECKED BY | DATE | TITLE JACK ASSEMBLY, STRAIGHT CABLED BULKHEAD SMA, RG 316 |
| .XX | RJB | 8-7-92 | |
| XXX REF | APPROVED BY | DATE | CODE NO. C - 142-0303-411/420 |
| MATL | RJB | 8-7-92 | |
| FINISH | RELEASE DATE | 8-11-92 | DRAWING NO. |
| | | | C - 142-0303-411/420 |
| | | | SCALE 10:1 |
| | | | U/N INCH |
| | | | SHEET 2 OF 2 |