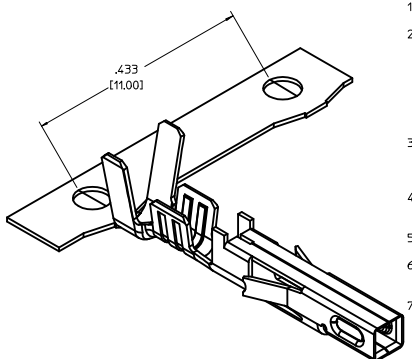
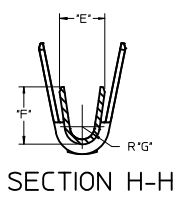
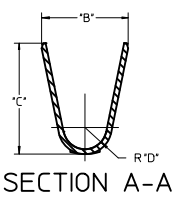
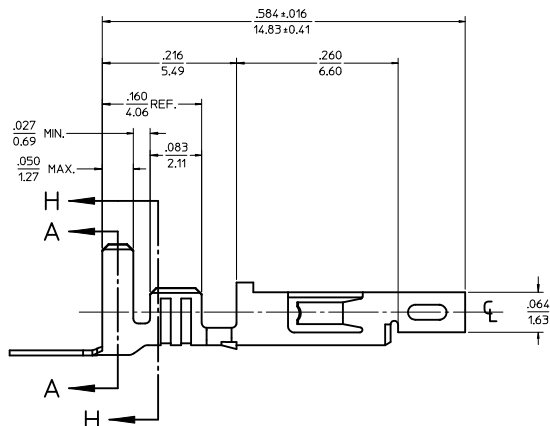
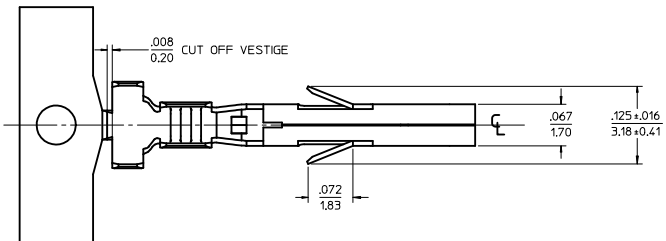


ITEM NO.	FORM	WIRE GAGE	DIM "B"	DIM "C"	DIM "D"	DIM "E"	DIM "F"	DIM "G"	PLATING: SEE NOTE 2
45750111	CHAIN	18-20	.142±.012 (3.60±0.30)	.177±.016 (4.50±0.40)	.035 (0.90)	.075±.012 (1.90±0.30)	.091±.016 (2.30±0.40)	.020 (0.50)	1 TIN OVER NICKEL
45750112	LOOSE								
45750311	CHAIN	16	.142±.012 (3.60±0.30)	.177±.016 (4.50±0.40)	.035 (0.90)	.091±.012 (2.30±0.30)	.106±.016 (2.70±0.40)	.024 (0.60)	
45750312	LOOSE								2 SELECT GOLD OVER NICKEL
45750121	CHAIN	18-20	.142±.012 (3.60±0.30)	.177±.016 (4.50±0.40)	.035 (0.90)	.075±.012 (1.90±0.30)	.091±.016 (2.30±0.40)	.020 (0.50)	
45750122	LOOSE								
45750321	CHAIN	16	.142±.012 (3.60±0.30)	.177±.016 (4.50±0.40)	.035 (0.90)	.091±.012 (2.30±0.30)	.106±.016 (2.70±0.40)	.024 (0.60)	
45750322	LOOSE								



LEGEND

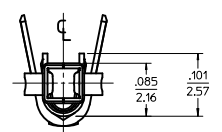
45750**1*

BASE NUMBER

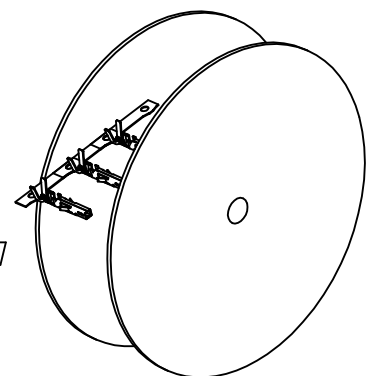
WIRE GAGE
1 = 18-20
3 = 16

FORM
1 = CHAIN
2 = LOOSE

PLATING (SEE NOTE 2)
1 = TIN OVER NICKEL
2 = SELECT GOLD

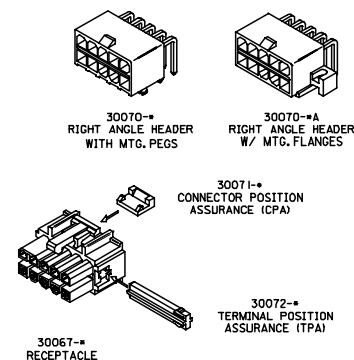
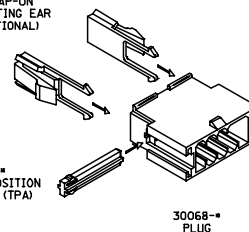
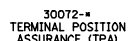
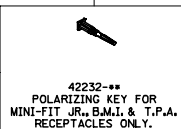
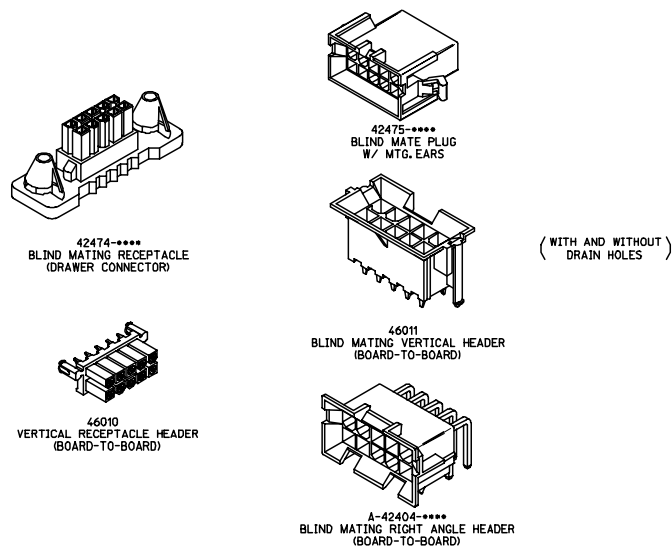
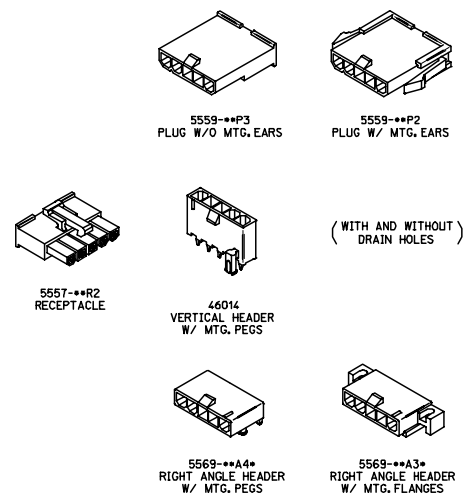
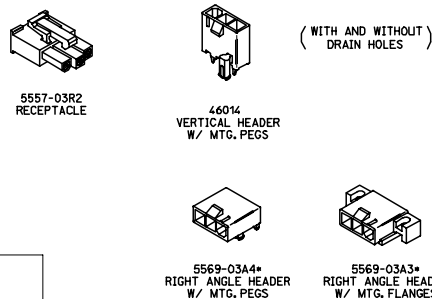
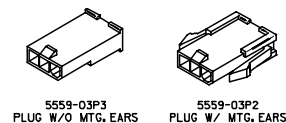
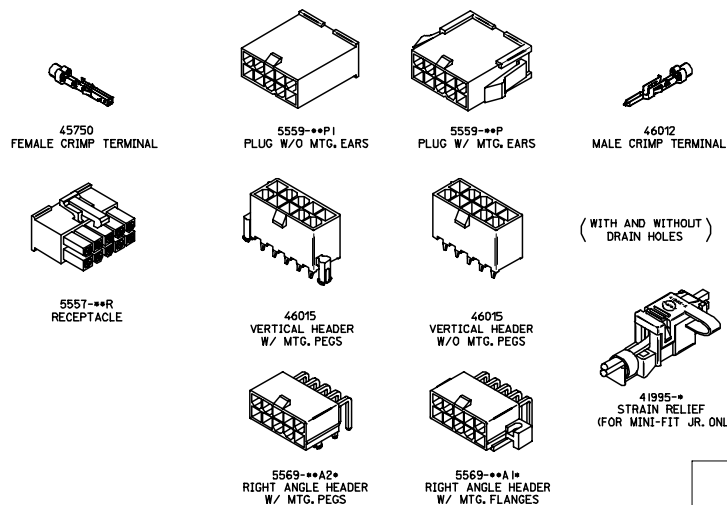


REEL WIND
DIRECTION



RoHS COMPLIANT

ADDED PACKAGING NOTES IEC NO: UCP2010-0471 DRAWN: JAGUILAR CHKD: BELL APPROVED: J. SMITH DATE: 2009/12/28	DESCRIPTION	QUALITY SYMBOLS ▽=0 ▽=0	GENERAL TOLERANCES (UNLESS SPECIFIED)		DIMENSION STYLE IN/MM		SCALE 10:1	DESIGN UNITS INCH	THIRD ANGLE PROJECTION	
G1	REV		mm		INCH		DRAWN BY		DATE	TITLE
			4 PLACES ± .005		± .005		SML		2004/01/30	FEMALE CRIMP TERMINAL, H.C.S.PLUS, MINI-FIT JR. SERIES MOLEX INCORPORATED
			3 PLACES ± .010		± .010		CHECKED BY		DATE	
			2 PLACES ± 0.25		± .014		MMD		2004/01/30	
1 PLACE ± 0.36		± .014		APPROVED BY		DATE				
				ANGULAR ± 1/2°		AP		2004/02/05	MOLEX	
						MATERIAL NO.		DOCUMENT NO.		SHEET NO.
						SEE CHART		SD-45750-001		1 OF 1
						SIZE D		THIS DRAWING CONTAINS INFORMATION THAT IS PROPRIETARY TO MOLEX INCORPORATED AND SHOULD NOT BE USED WITHOUT WRITTEN PERMISSION		



<div>INITIAL RELEASE</div> <div>EC NO: LCP2006-2550</div> <div>DRAWING CODE: 1</div> <div>CHKD: 2006/05/13</div> <div>APPR: JCOMERC 2006/05/15</div>	QUALITY SYMBOLS	GENERAL TOLERANCES (UNLESS SPECIFIED)		DIMENSION STYLE		SCALE	DESIGN UNITS	THIRD ANGLE PROJECTION														
	<div>▽=0</div> <div>▽=0</div>	<table><thead><tr><th></th><th>mm</th><th>INCH</th></tr></thead><tbody><tr><td>4 PLACES</td><td>±.004</td><td>±.0005</td></tr><tr><td>3 PLACES</td><td>±.005</td><td>±.0008</td></tr><tr><td>2 PLACES</td><td>±.008</td><td>±.0012</td></tr><tr><td>1 PLACE</td><td>±.010</td><td>±.0015</td></tr></tbody></table>		mm	INCH	4 PLACES	±.004	±.0005	3 PLACES	±.005	±.0008	2 PLACES	±.008	±.0012	1 PLACE	±.010	±.0015	<div>DRAWN BY TREGORI</div> <div>DATE 2006/04/27</div> <div>CHECKED BY JCOMERC</div> <div>DATE</div> <div>APPROVED BY JCOMERC</div> <div>DATE</div>	TITLE	MINI-FIT PLUS HCS CONNECTOR FAMILY (INDEX DRAWING)		
		mm	INCH																			
	4 PLACES	±.004	±.0005																			
3 PLACES	±.005	±.0008																				
2 PLACES	±.008	±.0012																				
1 PLACE	±.010	±.0015																				
	ANGULAR ±.000	MATERIAL NO.	DOCUMENT NO.		MOLEX MOLEX INCORPORATED																	
	DRAFT WHERE APPLICABLE MUST REMAIN WITHIN DIMENSIONS	SEE ABOVE		SDIN-45750-001		SHEET NO. 1 OF 1																
A	NEW	THIS DRAWING CONTAINS INFORMATION THAT IS PROPRIETARY TO MOLEX INCORPORATED AND SHOULD NOT BE USED WITHOUT WRITTEN PERMISSION																				