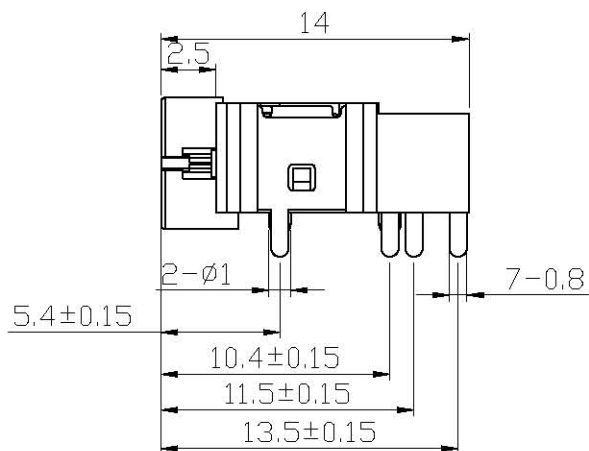


Technical drawing of a circular mechanical component, likely a connector or plug, showing dimensions and tolerances. The drawing includes a top view and a side view.

Dimensions and Tolerances:

- Overall diameter: $\phi 3.6 \pm 0.05$
- Inner diameter: $\phi 6 \pm 0.1$
- Top view dimensions:
 - Overall width: 5.3
 - Distance from center to top edge: 4.7
 - Distance from center to bottom edge: 4.3
- Side view dimensions:
 - Overall height: 2.75
 - Distance from center to top edge: 5
 - Distance from center to bottom edge: 2
- Bottom view dimensions (from left to right):
 - 1.6 ± 0.15
 - 3.2 ± 0.15
 - 4.5 ± 0.15
 - 4.8 ± 0.2
- Right view dimensions (from left to right):
 - 1.6 ± 0.15
 - 3.6 ± 0.15
 - 4.5 ± 0.15



FC68129

UNLESS OTHERWISE
SPECIFIED TOLERANCES

ANGLES :

X°	$\pm 5^\circ$
$X.X^\circ$	$\pm 3^\circ$

ISSUE 1	27/09/11
---------	----------