

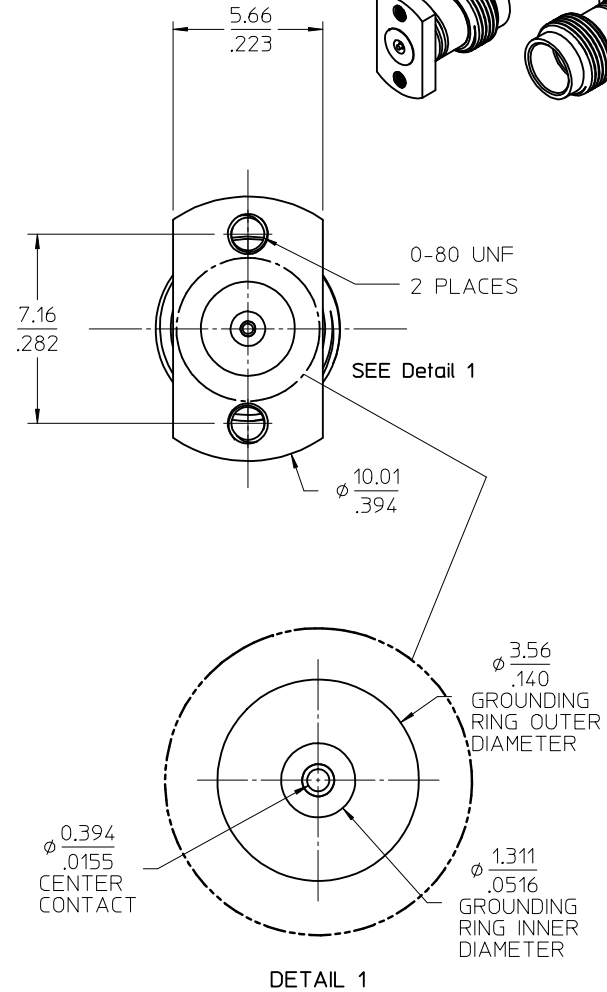
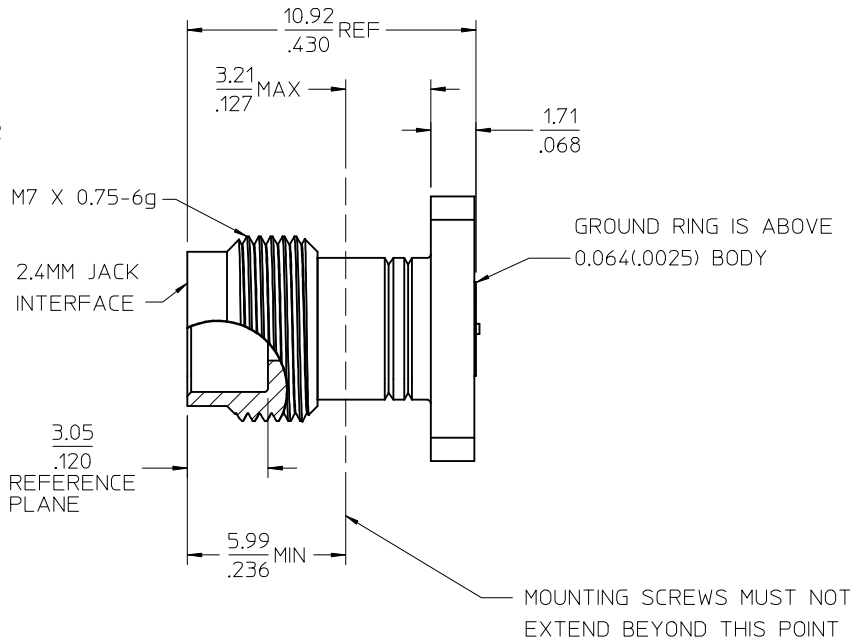
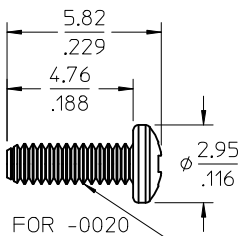
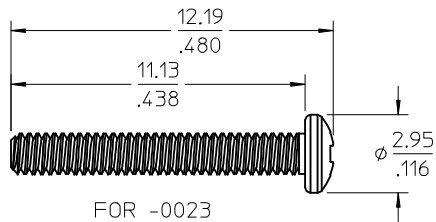
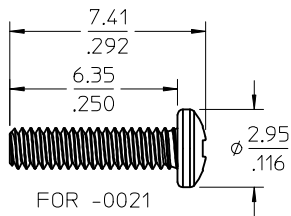
# MATERIALS AND FINISHES

BODY: STAINLESS STEEL  
 PASSIVATE

CENTER CONTACT: BERYLLIUM COPPER  
 PLATED GOLD

INSULATOR: TEFLON

SCREW: STEEL



NOTE:  
 PATENT PENDING

73387-0023	WITH TWO 11.1/.438 SCREWS	6.4(.252) TO 9.4(.370)
73387-0022	SCREWS NOT INCLUDED	N/A
73387-0021	WITH TWO 6.35/.25 SCREWS	3.23(.127) TO 4.75(.187)
73387-0020	WITH TWO 4.76/.19 SCREWS	0.57(.062) TO 2.79(.110)
PART NO.	DESCRIPTION	PCB THICKNESS

MIL-STD-348B, FIG 72	INTERFACE
SPECIFICATION	DESCRIPTION

CHG: ADD -0023 EC NO: URF2013-0237 DRWN: JWIENER CHKD: SSS APP: JWIENER 2012/10/19 2012/10/19 2012/10/22	DESCRIPTION	QUALITY SYMBOLS <div>▽=0</div> <div>▽=0</div>	GENERAL TOLERANCES (UNLESS SPECIFIED)			DIMENSION STYLE MM/IN		SCALE	DESIGN UNITS METRIC	THIRD ANGLE PROJECTION	
						DRAWN BY JLEE02		DATE 2010/04/20	TITLE 2.4MM JACK VERTICAL PCB 50 OHM, COMPRESSION EWR-4172, 2.4MM-JR/PCB		
						CHECKED BY SSS		DATE 2010/04/20			
						APPROVED BY JWIENER		DATE 2010/10/27			
						MATERIAL NO.		DOCUMENT NO.			
						SEE TABLE		SD-73387-002			
			DRAFT WHERE APPLICABLE MUST REMAIN WITHIN DIMENSIONS								