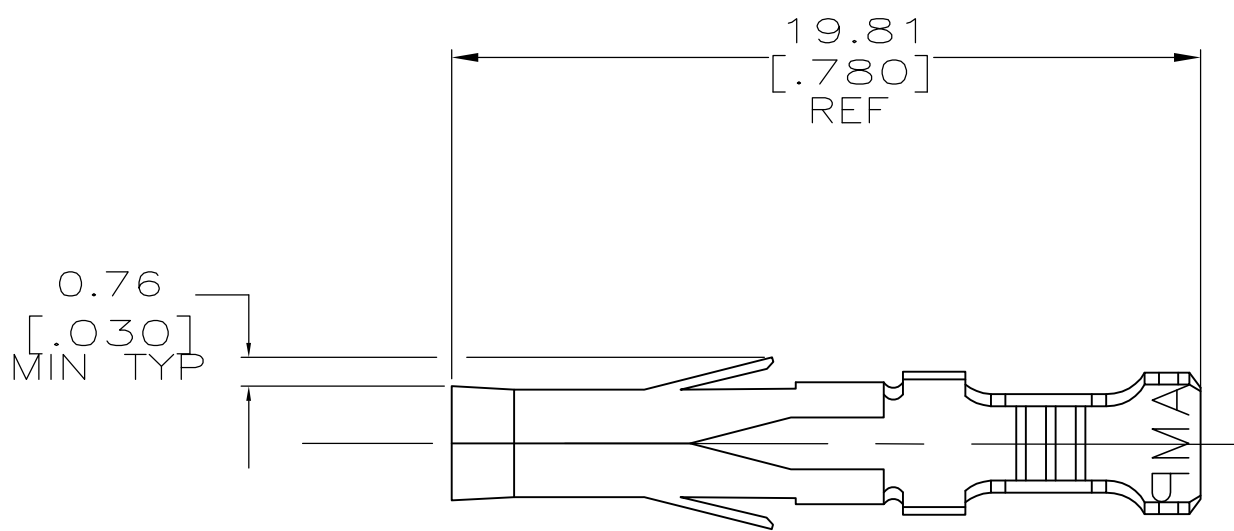
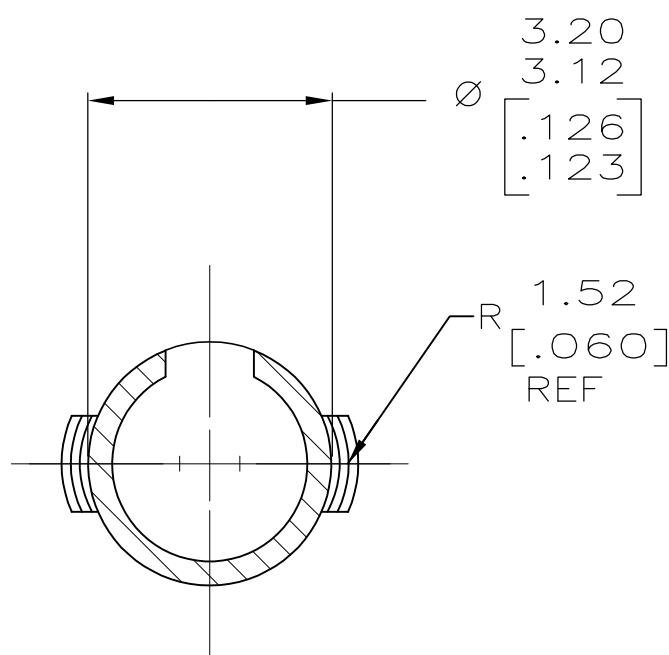
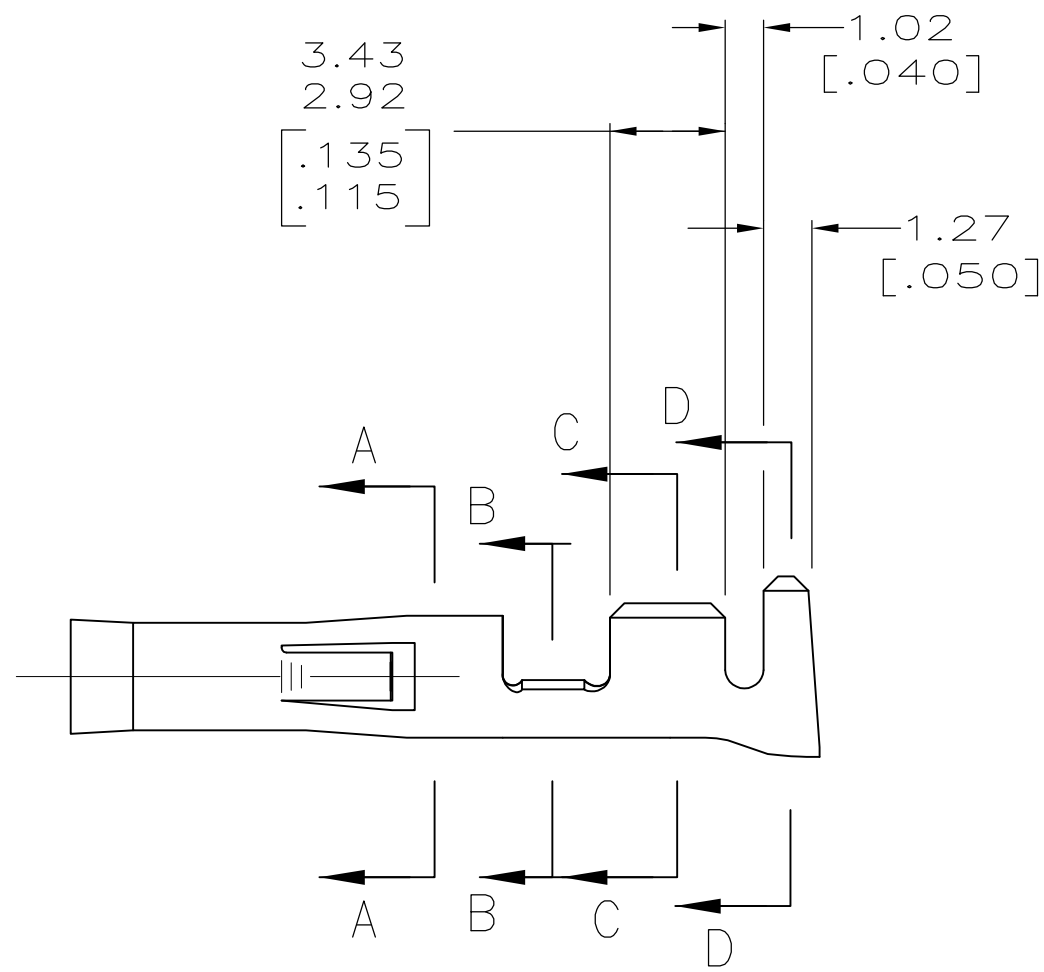
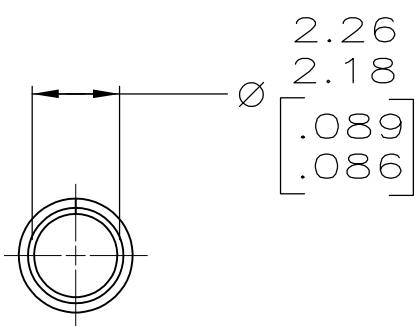


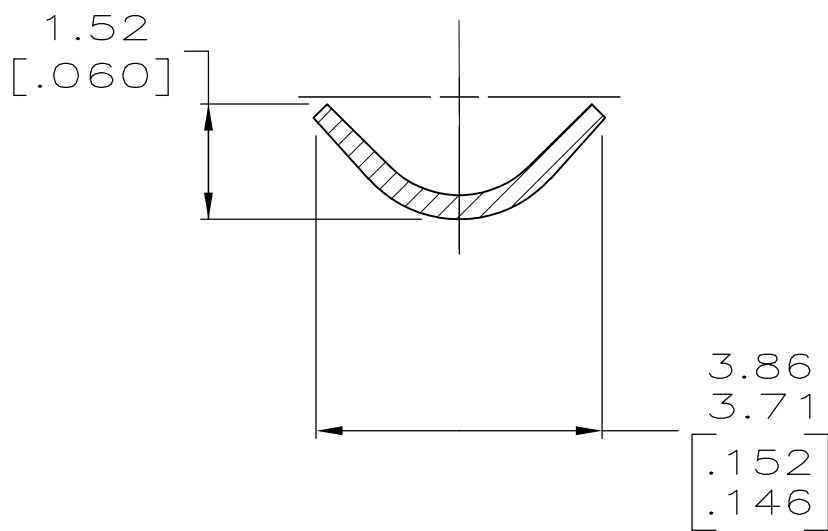
LOC		DIST		REVISIONS				
CM	O	P	LTR	DESCRIPTION	DATE	DWN	APVD	
			F	ECO-07-014387	19JUN07	KW	CC	



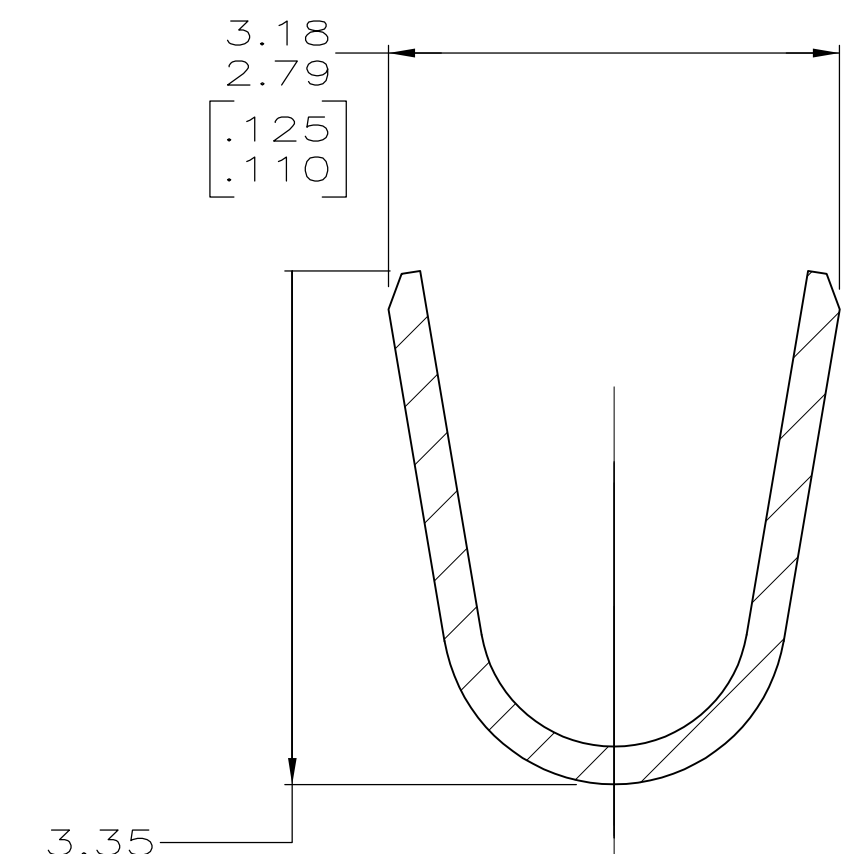
- ⚠ 0.00127 [.000050] NICKEL PLATE WITH 0.00076 [.000030] GOLD PLATE ON INSIDE OF RECEPTACLE.
2. WIRE RANGE: 0.5–2mm² (20–14 AWG).
3. INSULATION RANGE: 3.56 [.140] MAX. DIA.
4. DIMENSIONS IN BRACKETS ARE IN INCHES.



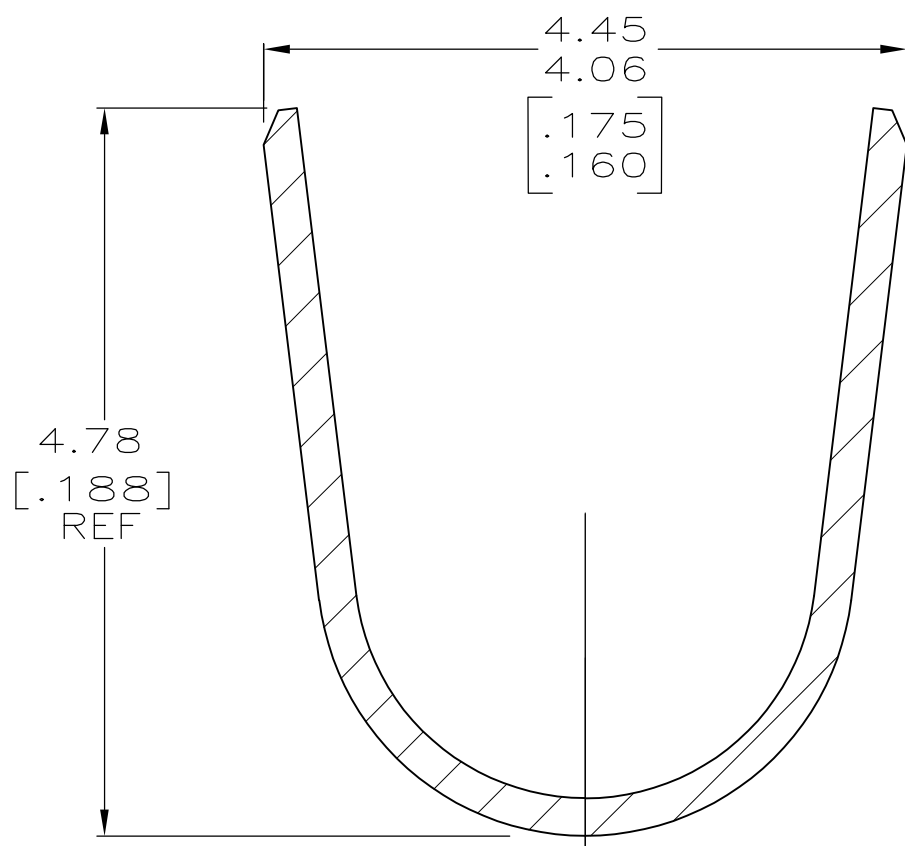
SECTION A—A
SCALE 10:1



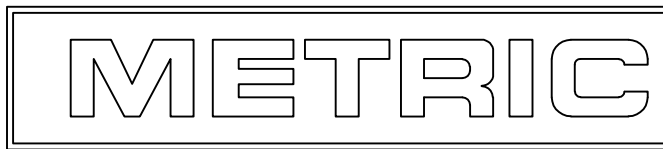
SECTION B—B
SCALE 10:1



SECTION C—C
SCALE 10:1



SECTION D—D
SCALE 10:1



PRE-TIN	0.25 [.010] PHOS BRZ	770144-6
⚠	0.25 [.010] BRASS	770144-5
PRE-TIN	0.25 [.010] BRASS	770144-1
FINISH	MATERIAL	PART NO

THIS DRAWING IS A CONTROLLED DOCUMENT.		DWN K. WHITAKER CHK C. CASH APVD C. CASH	19JUN2007 19JUN2007 19JUN2007	Tyco Electronics Corporation Harriburg, PA 17105-3608	
DIMENSIONS: mm [INCHES]		TOLERANCES UNLESS OTHERWISE SPECIFIED:		NAME SOCKET, .093, LOOSE PIECE, COMMERCIAL PIN AND SOCKET	
		0. PLC ± -		PRODUCT SPEC	
		1. PLC ± -		APPLICATION SPEC	
MATERIAL SEE TABLE		FINISH SEE TABLE		WEIGHT -	
CUSTOMER DRAWING				SCALE 5:1	SHEET 1 OF 1
				REV F	