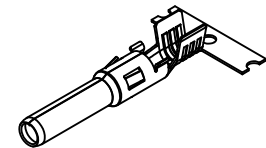
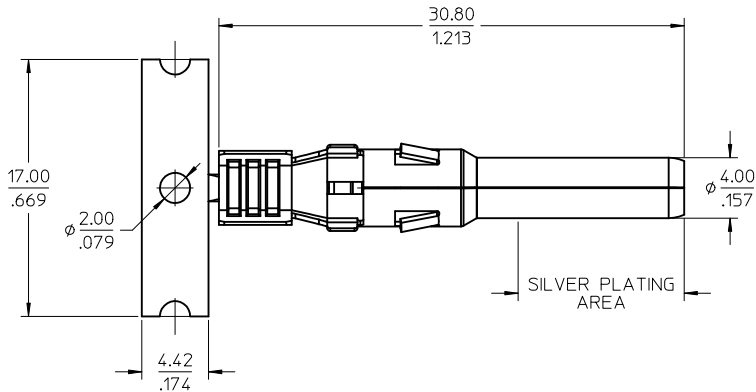
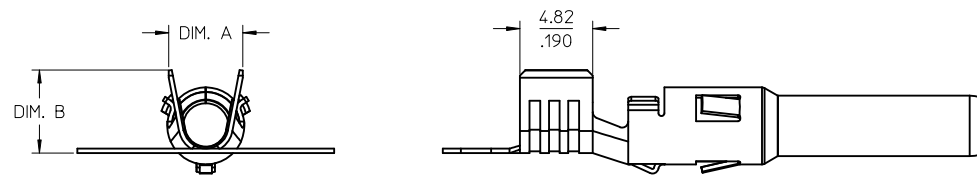


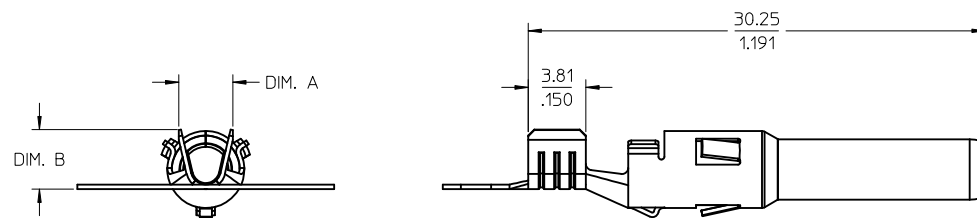
13	12	11	10	9	8
MATERIAL NO. ON STRIP	MATERIAL NO. LOOSE PIECE	CABLE SIZE	DIM. "A"	DIM. "B"	USE WITH HOUSING ASSY
1301960315	1301960313	2.5mm <sup>2</sup> / 14AWG	3.58/.141	3.94/.155	1302440204
1301960314	1301960310	4.0-6.0mm <sup>2</sup> / 12-10AWG	4.90/.193	5.51/.217	1302440202



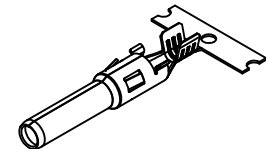
12-10 AWG (4.0-6.0mm<sup>2</sup>)  
SCALE 2:1



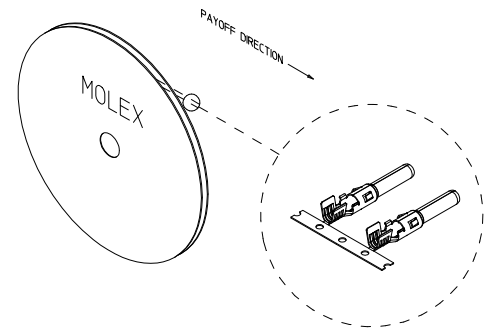
12-10 AWG (4.0-6.0mm<sup>2</sup>)



14 AWG (2.5mm<sup>2</sup>)  
SAME AS 12-10 AWG  
EXCEPT AS NOTED




14 AWG (2.5mm<sup>2</sup>)  
SCALE 2:1



#### NOTES:

1. MATERIAL: COPPER ALLOY 0.30/.012 THK.
2. FINISH: 2.04METER/80MNCH MIN. SELECTIVE SILVER OVER 1.27METER/50MNCH MIN. NICKEL OVERALL
3. TERMINAL FOR USE WITH 130244 SERIES PIN HOUSING ASSEMBLY. SEE CHART FOR APPLICABLE PART NUMBERS.
4. PRODUCT SPECIFICATION: PS-130244-001
5. STRIP TERMINALS ARE REELED AS SHOWN ABOVE ON XXX SIZE REELS. XXX PARTS PER REEL.
6. APPLICATION TOOLING AND CRIMP SPECIFICATIONS: CONSULT FACTORY.
7. PARTS ARE ROHS COMPLIANT.

PRELIMINARY EC NO: WNA2011-0195 DRWN:CLYORK 2010/11/24 CHKD: APPR:DTITUS 2011/01/14	DESCRIPTION	QUALITY SYMBOLS  ▽=0 ▽=0	GENERAL TOLERANCES (UNLESS SPECIFIED)		DIMENSION STYLE MM/IN		SCALE 4:1	DESIGN UNITS METRIC	THIRD ANGLE PROJECTION 		
				mm	INCH	DRAWN BY CLYORK		DATE 2010/04/15		TITLE PIN CONTACT, PV SOLAR 14 & 12-10 AWG	
			4 PLACES	± ---	± ---	CHECKED BY DTITUS		DATE 2010/04/15			
			3 PLACES	± ---	± .010						
			2 PLACES	± 0.25	± .02	APPROVED BY DTITUS		DATE 2010/05/07		molex MOLEX INCORPORATED	
			1 PLACE	± 0.5	± ---	MATERIAL NO.		DOCUMENT NO.		SHEET NO.	
2	REV		DRAFT WHERE APPLICABLE MUST REMAIN WITHIN DIMENSIONS		SEE CHART		SD-130196-001		1 OF 1		
					SIZE C	THIS DRAWING CONTAINS INFORMATION THAT IS PROPRIETARY TO MOLEX INCORPORATED AND SHOULD NOT BE USED WITHOUT WRITTEN PERMISSION					