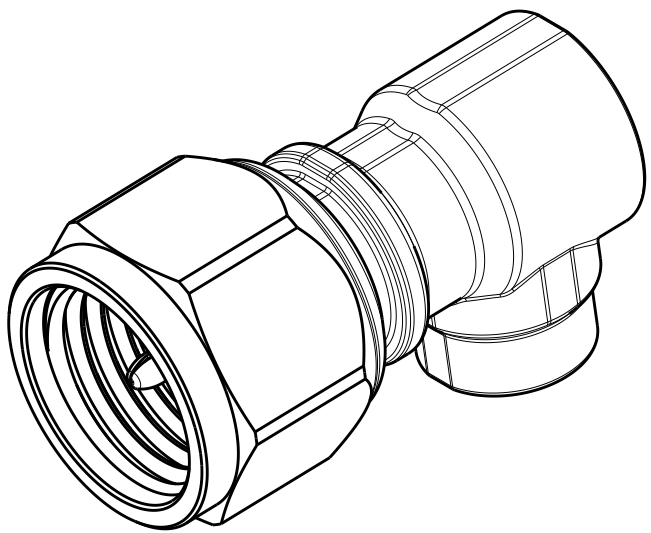
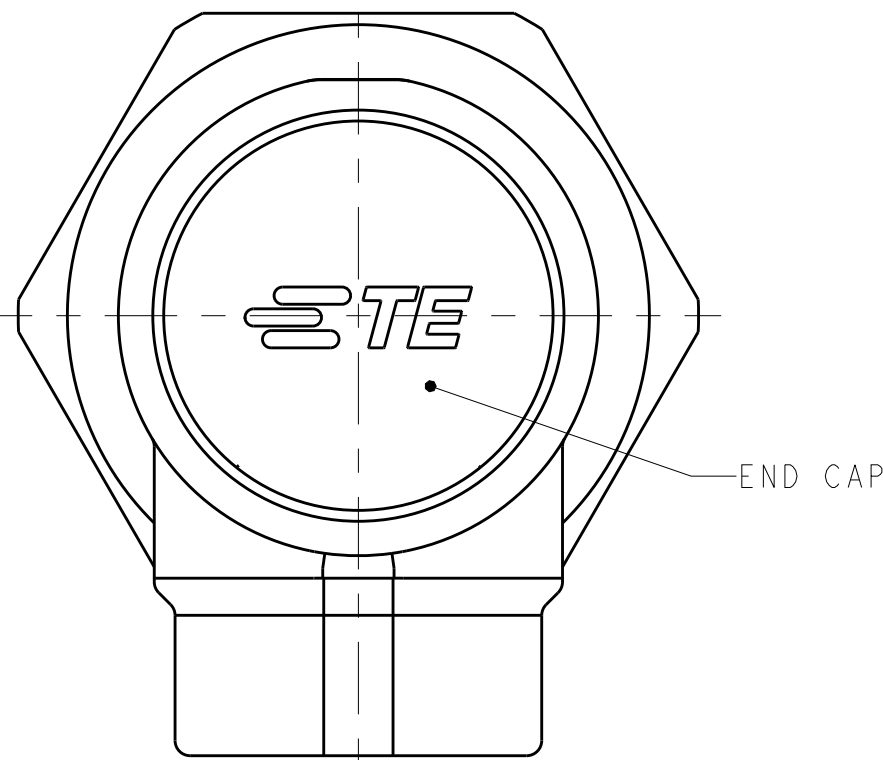
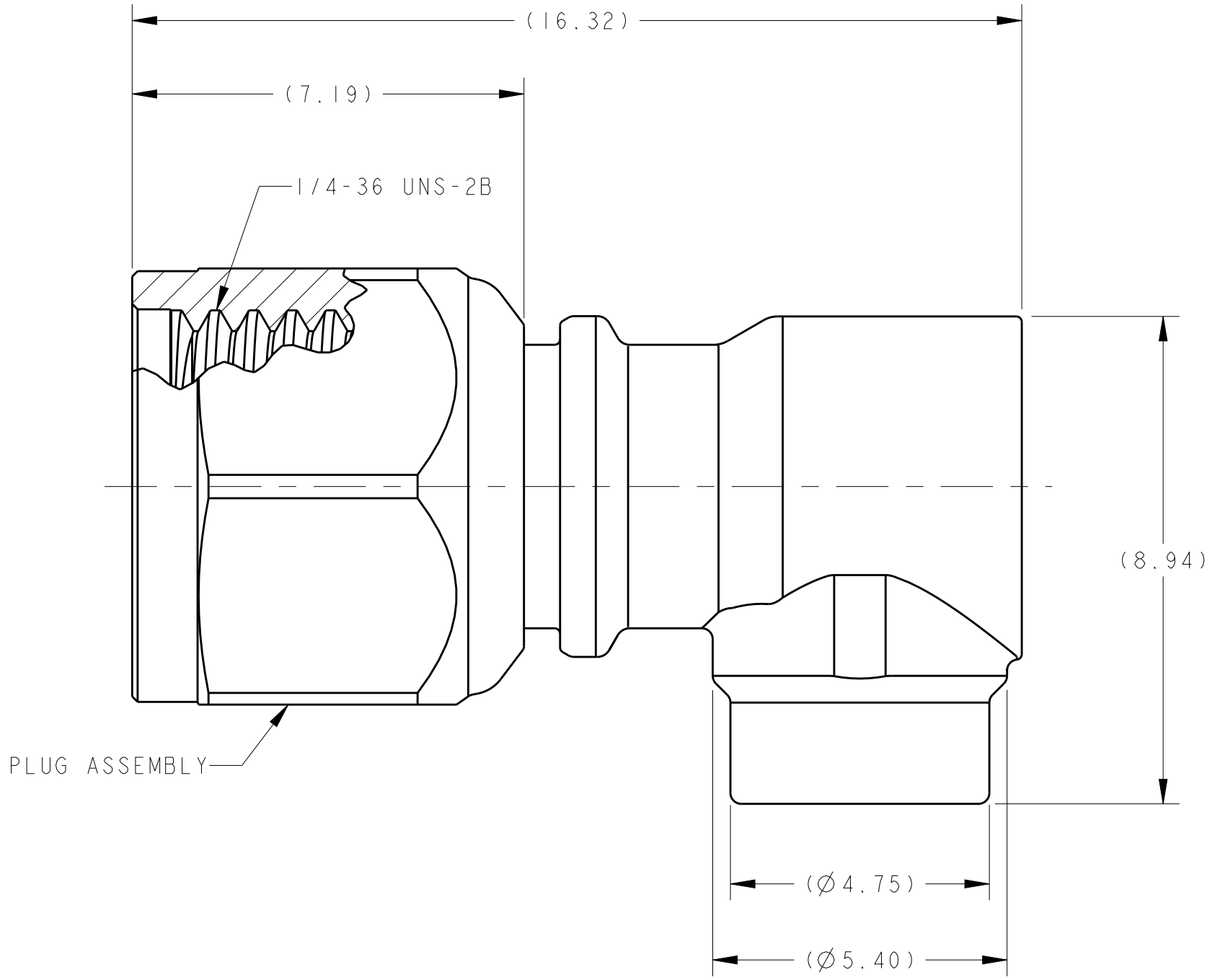
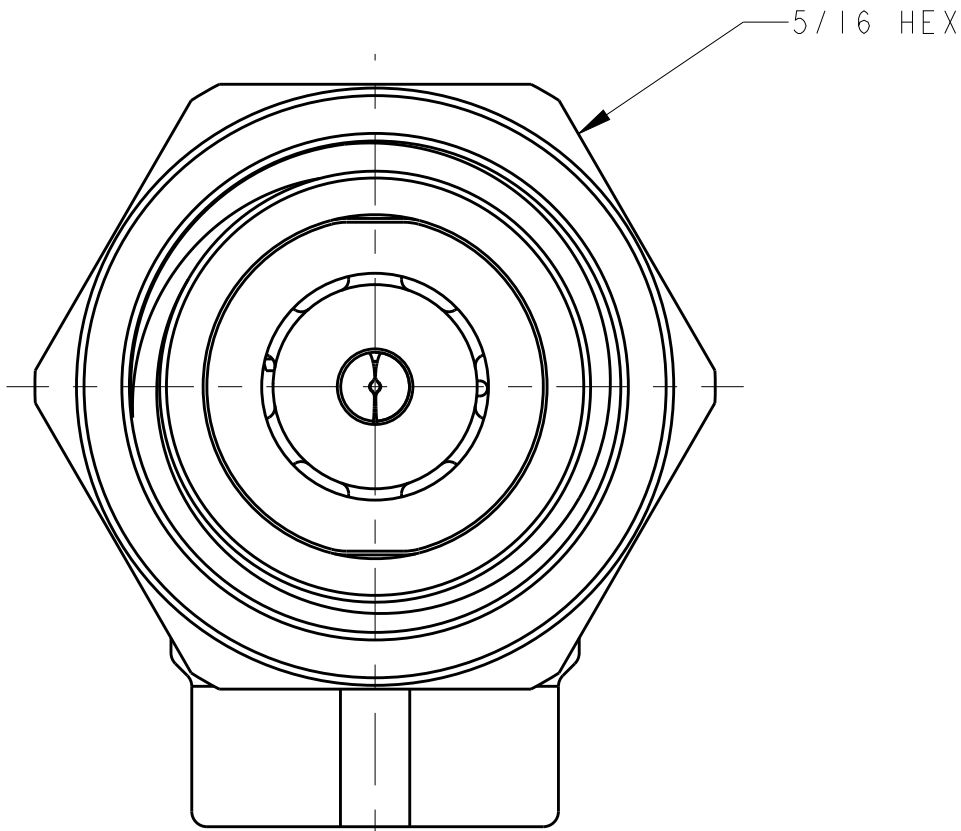


LOC		DIST		REVISIONS				
A	J	P	LTR	DESCRIPTION		DATE	DWN	APVD
				A	RELEASED.	19SEP2012	KF	KW



(SMA-PR-1A-S AND SMA-PR-1A-B SHOWN)
SCALE 5:1



CONFIGURATION A
(SMA-PR-1A-S AND SMA-PR-1A-B ONLY)
SHOWN

- MATERIAL:
PLUG ASSEMBLY: R/A PLUG HOUSING, ZINC; DIELECTRIC, POLYMETHYLPENTENE;
PIN CONTACT AND COUPLING NUT, COPPER ALLOY; GASKET, SILICONE.
CAP, SLEEVE AND FERRULE: COPPER ALLOY.
- PLATING:
PLUG ASSEMBLY: R/A PLUG HOUSING, NICKEL PLATE OR TIN PLATE; COUPLING NUT, NICKEL PLATE;
PIN CONTACT, GOLD PLATED AT INTERFACE, TIN PLATED AT REAR.
CAP AND FERRULE: NICKEL PLATE.
SLEEVE: TIN PLATE.
- ALL ITEMS ARE SHIPPED LOOSE PIECE.
- DIMENSIONS SHOWN IN "CONFIGURATION A" APPLY UNLESS OTHERWISE INDICATED.
- SEE INSTRUCTION SHEET 408-32072 FOR CABLE PREPARATION AND TERMINATION DETAILS.

BULK	RG-178, 196	SEE CONFIGURATION B	2081228-4	2081214-2	2081210-4	2081197-2	1-2081203-2	SMA-PR-1D-B
SINGLE	RG-178, 196	SEE CONFIGURATION B	2081228-4	2081214-2	2081210-4	2081197-2	1-2081203-1	SMA-PR-1D-S
BULK	RG-405, RG-405 FLEX	SEE CONFIGURATION E	-	-	2081210-4	2081197-4	1-2081203-0	SMA-PR-1C-B
SINGLE	RG-405, RG-405 FLEX	SEE CONFIGURATION E	-	-	2081210-4	2081197-4	2081203-9	SMA-PR-1C-S
BULK	RG-58, 141, 142, 223, 400	SEE CONFIGURATION D	-	2081214-4	2081210-4	2081197-3	2081203-8	SMA-PR-1G-B
SINGLE	RG-58, 141, 142, 223, 400	SEE CONFIGURATION D	-	2081214-4	2081210-4	2081197-3	2081203-7	SMA-PR-1G-S
BULK	RD-316, K02252D	SEE CONFIGURATION C	-	2081214-6	2081210-4	2081197-2	2081203-6	SMA-PR-1B-B
SINGLE	RD-316, K02252D	SEE CONFIGURATION C	-	2081214-6	2081210-4	2081197-2	2081203-5	SMA-PR-1B-S
BULK	RG-174, 188, 316	SEE CONFIGURATION B	-	2081214-2	2081210-4	2081197-2	2081203-4	SMA-PR-1F-B
SINGLE	RG-174, 188, 316	SEE CONFIGURATION B	-	2081214-2	2081210-4	2081197-2	2081203-3	SMA-PR-1F-S
BULK	RG-402, RG-402 FLEX	SEE CONFIGURATION A	-	-	2081210-4	2081197-1	2081203-2	SMA-PR-1A-B
SINGLE	RG-402, RG-402 FLEX	SEE CONFIGURATION A	-	-	2081210-4	2081197-1	2081203-1	SMA-PR-1A-S
PACKAGING	CABLE TYPES USED	ALTERNATIVE CONFIGURATIONS	SLEEVE QTY. = 1	FERRULE QTY. = 1	END CAP QTY. = 1	PLUG ASSEMBLY QTY. = 1	PART NUMBER	PART NUMBER (CONFIGURABLE)

THIS DRAWING IS A CONTROLLED DOCUMENT.

DIMENSIONS:
mm

MATERIAL
SEE NOTES

TOLERANCES UNLESS OTHERWISE SPECIFIED:

0 PLC ±

1 PLC ±

2 PLC ±

3 PLC ±

4 PLC ±

ANGLES ±

FINISH ±

SEE NOTES

DWN
K. FOLTZ 20SEP2011

CHK
K. WEIDNER 20SEP2011

APVD
K. WEIDNER 20SEP2011

PRODUCT SPEC
108-60094

APPLICATION SPEC
-

WEIGHT
-

Customer Drawing

TE Connectivity

NAME
SMA, RIGHT ANGLE,
PLUG KIT

SIZE
A100779

CAGE CODE
C=SMA-PR-1

DRAWING NO
-

RESTRICTED TO
-

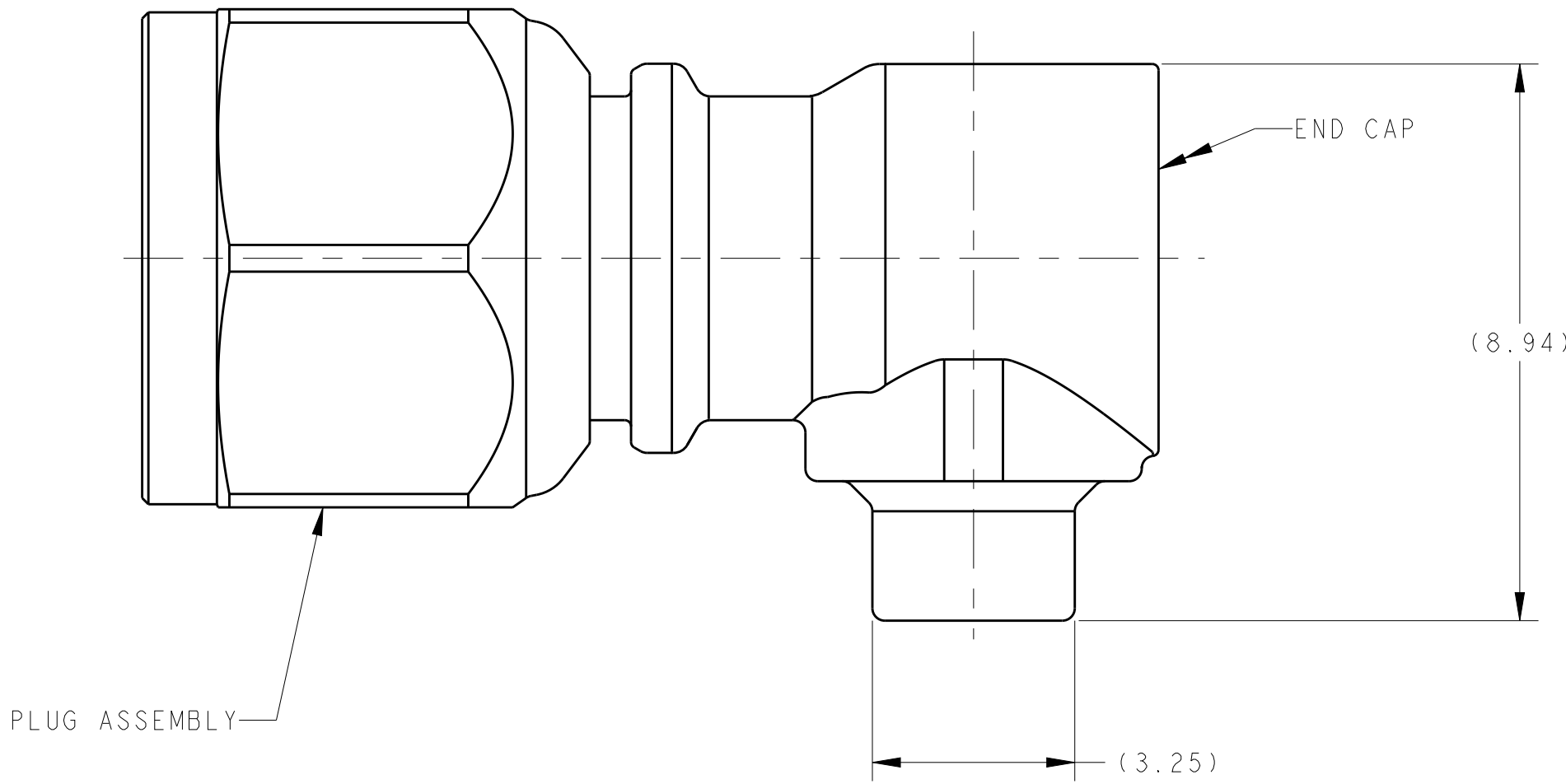
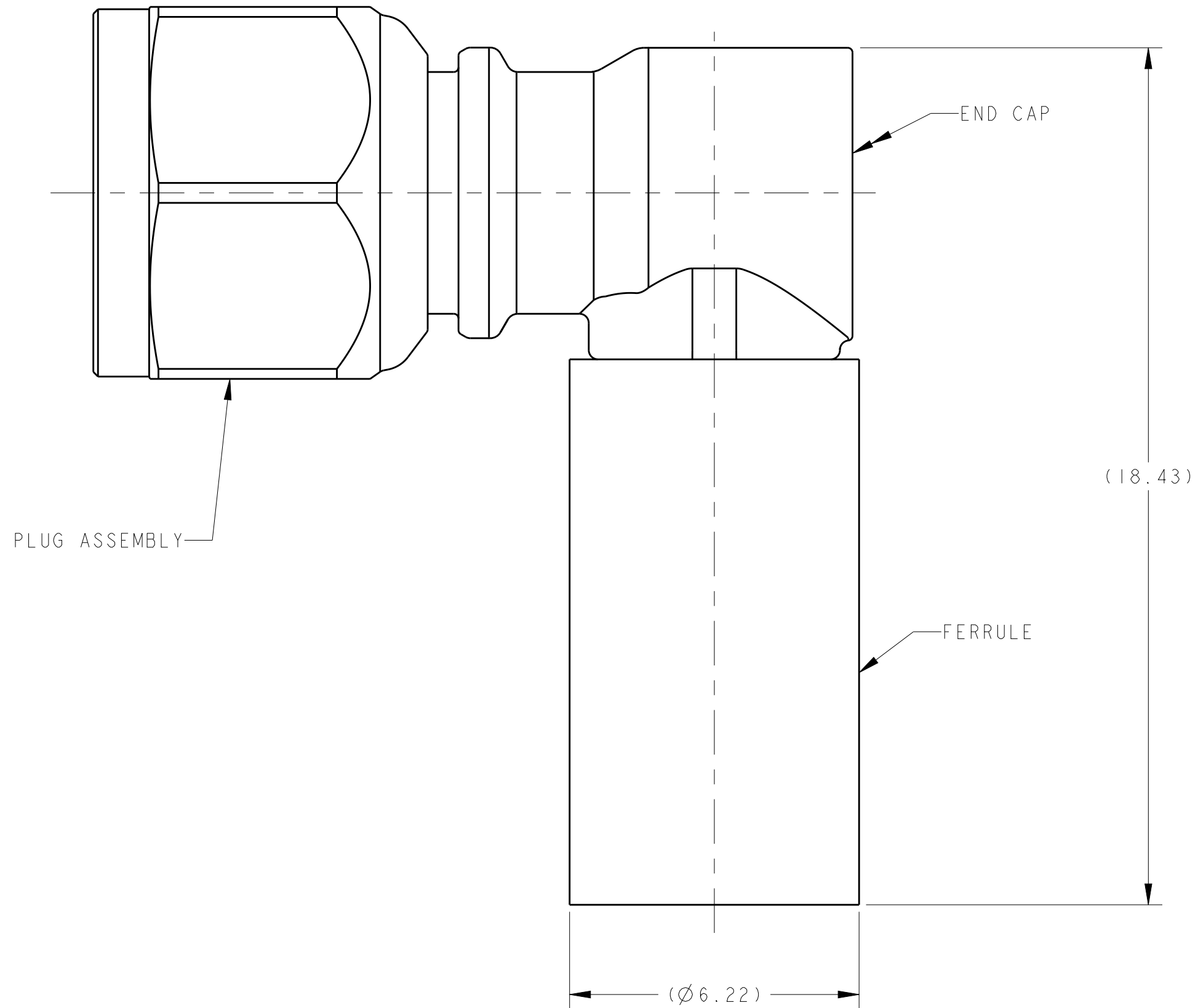
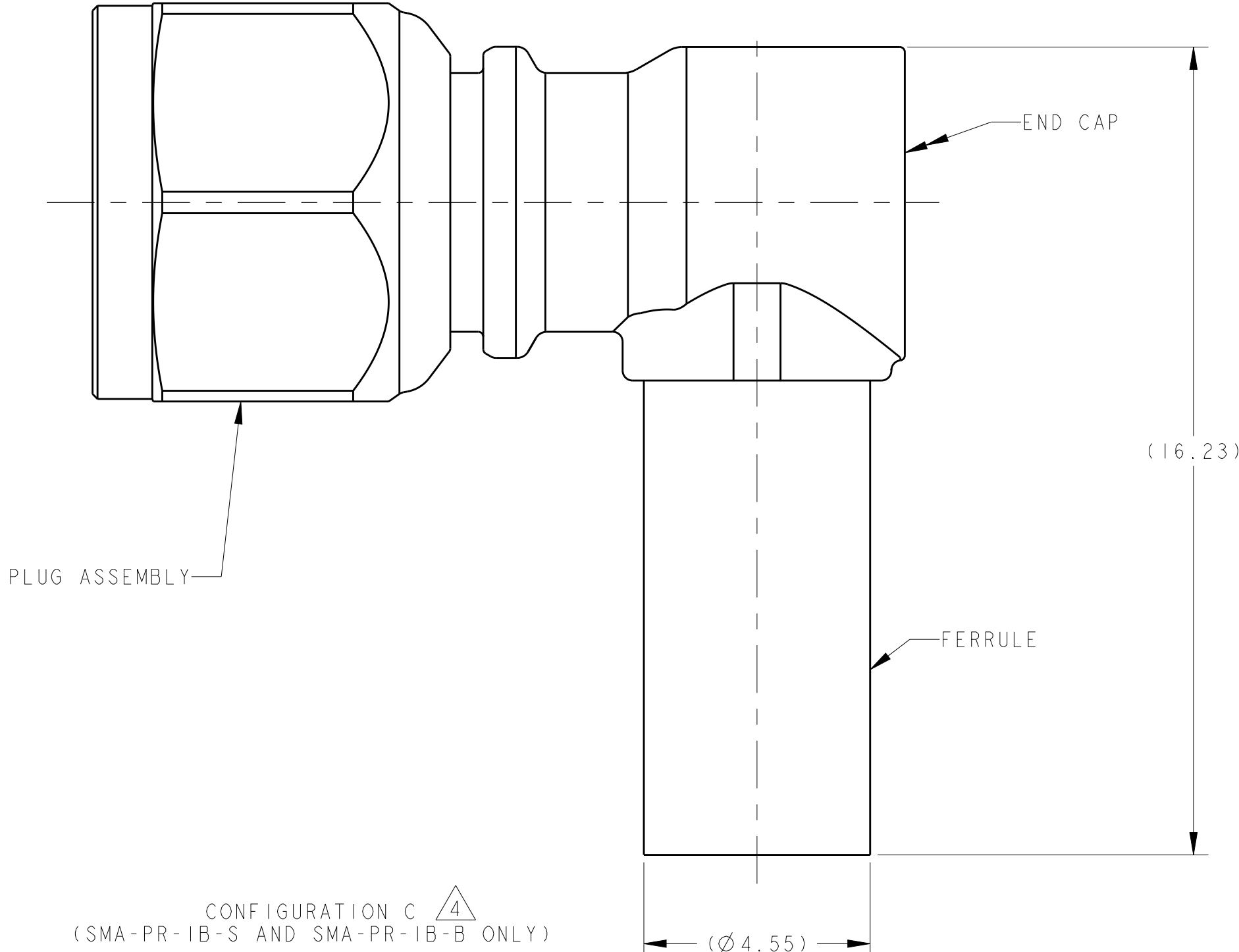
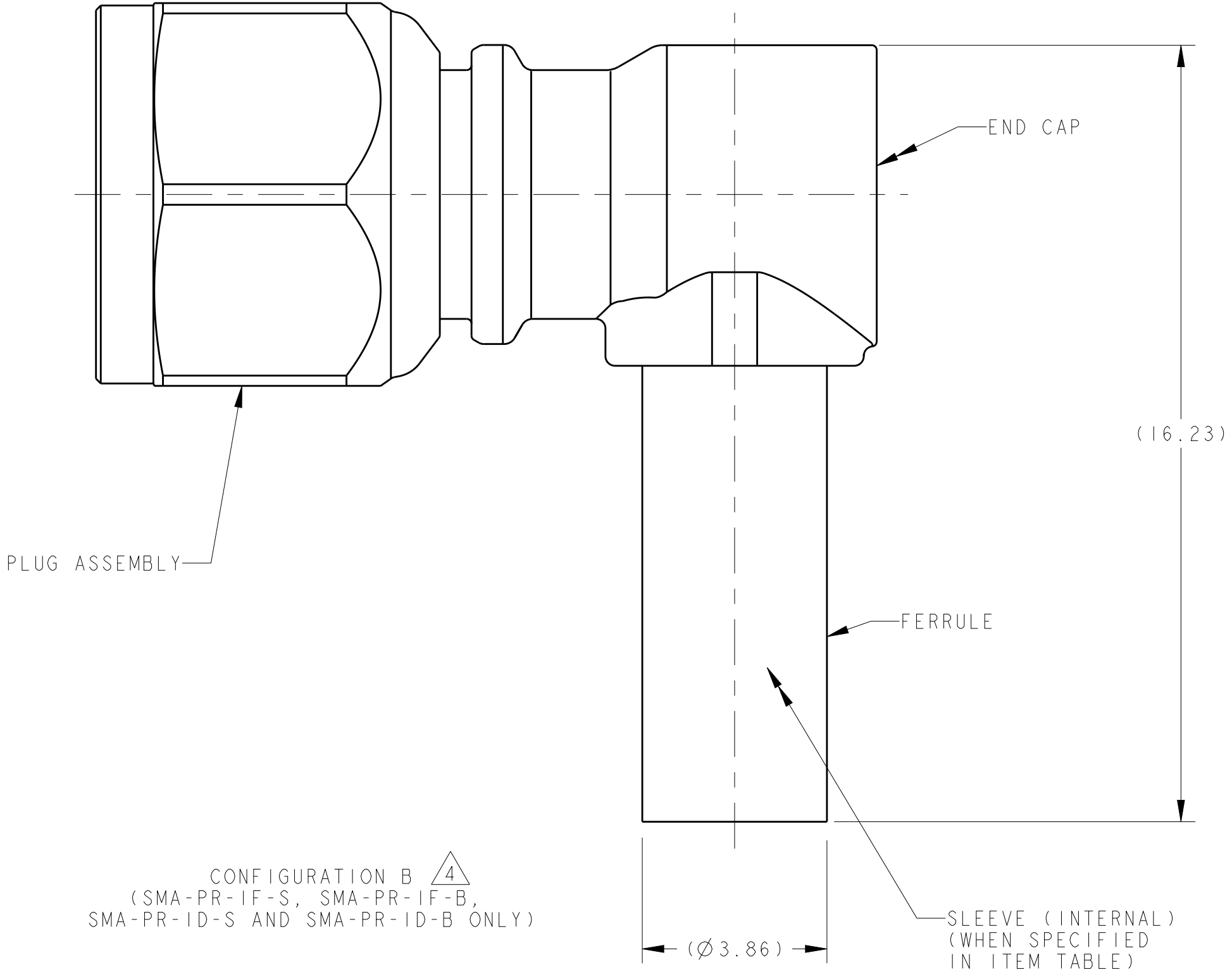
SCALE
10:1

SHEET
1

OF
2

REV
A

LOC		DIST		REVISIONS					
AJ		00		P	LTR	DESCRIPTION	DATE	DWN	APVD
				-	-	SEE SHEET 1	-	-	-



THIS DRAWING IS A CONTROLLED DOCUMENT.				DWN	K. FOLTZ	20SEP2011	TE Connectivity		
				CHK	K. WEIDNER	20SEP2011			
				APVD	K. WEIDNER	20SEP2011	NAME		
DIMENSIONS:				TOLERANCES UNLESS OTHERWISE SPECIFIED:			PRODUCT SPEC		
mm				0 PLC ±			108-60094		
				1 PLC ±			APPLICATION SPEC		
				2 PLC ±			SIZE		
				3 PLC ±			CAGE CODE		
				4 PLC ±			DRAWING NO		
				ANGLES			RESTRICTED TO		
				FINISH			A100779		
MATERIAL				SEE NOTES			SMA-PR-1		
							Customer Drawing		
							SCALE 10:1		
							SHEET 2 OF 2		
							REV A		