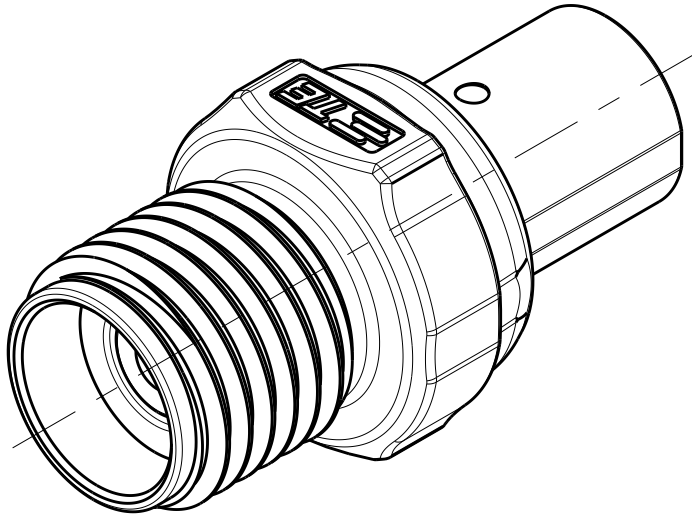
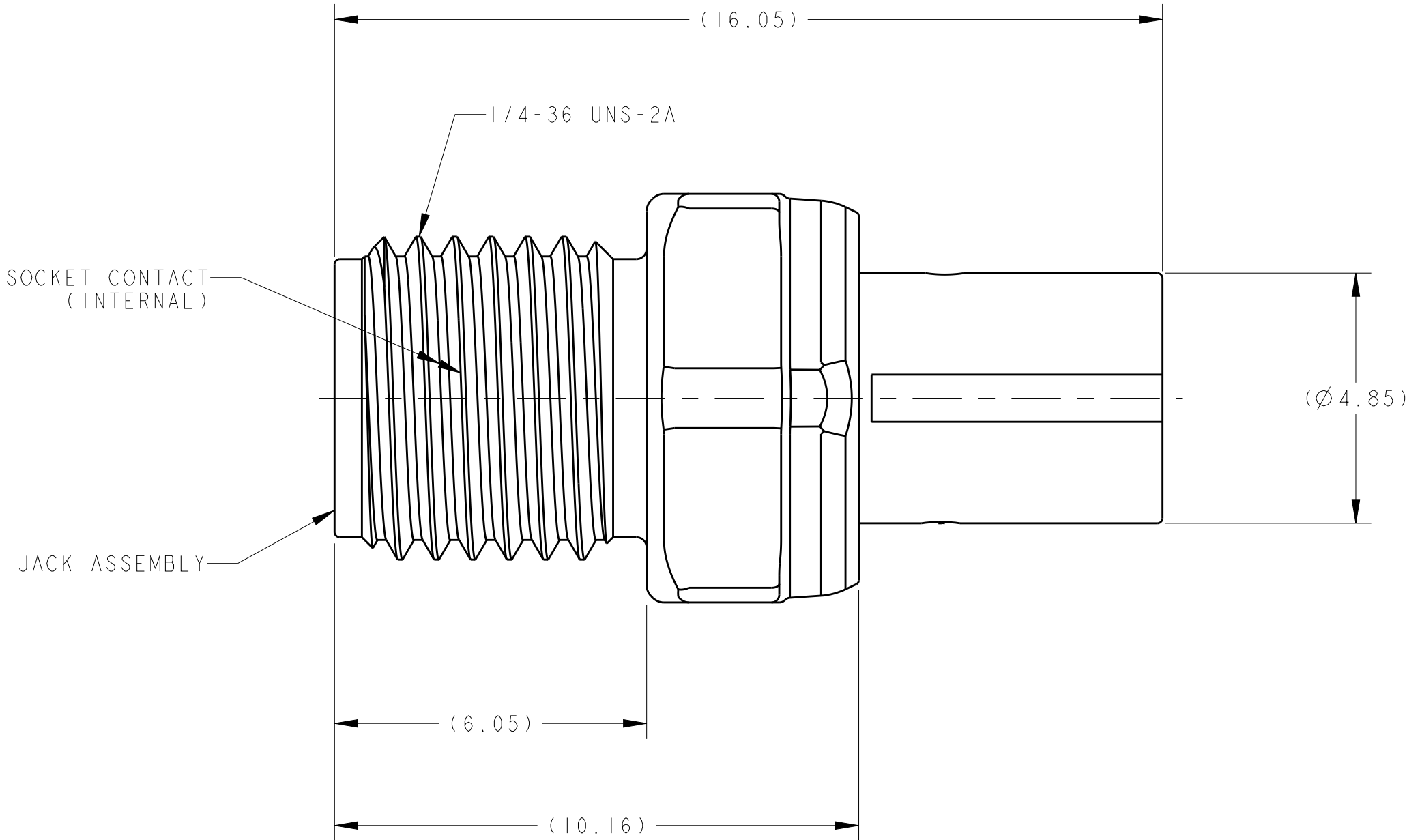
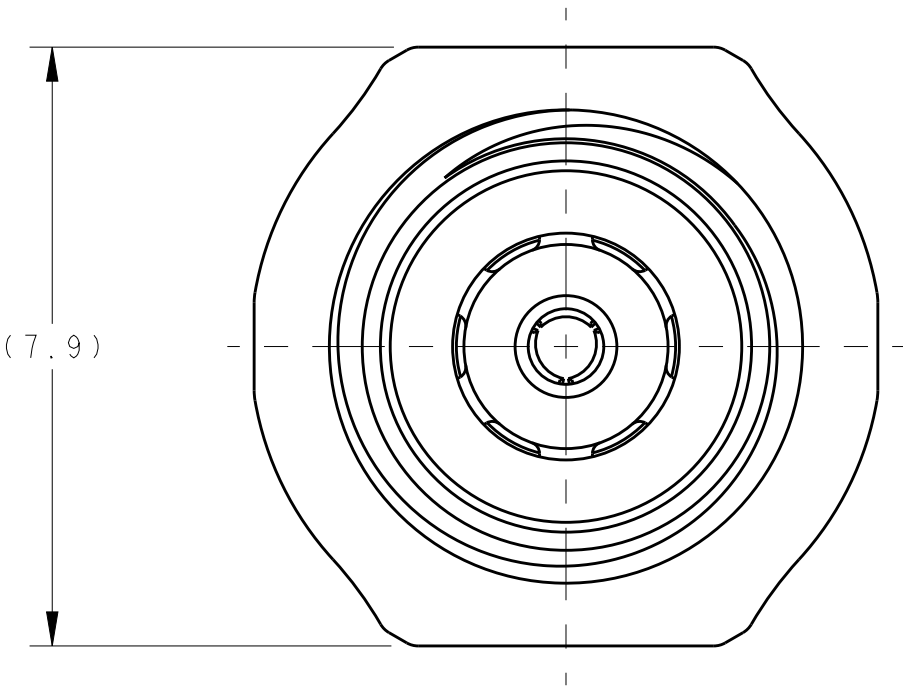


LOC	DIST	REVISIONS					
		P	LTR	DESCRIPTION	DATE	DWN	APVD
AJ	00		A	RELEASED.	24SEP2012	KF	KW



SMA-JS-1A-S SHOWN.  
SCALE 6:1



CONFIGURATION A  
(SMA-JS-1A-S AND SMA-JS-1A-B ONLY)

1. MATERIAL:  
JACK ASSEMBLY: JACK HOUSING AND CRIMP END, ZINC; DIELECTRIC, POLYMETHYLPENTENE.  
SOCKET CONTACT, FERRULE AND SLEEVE: COPPER ALLOY.
2. PLATING:  
JACK ASSEMBLY: JACK HOUSING, NICKEL PLATE; CRIMP END, NICKEL PLATE OR TIN PLATE.  
SOCKET CONTACT: GOLD PLATED AT INTERFACE, TIN PLATED AT CRIMP END.  
FERRULE: NICKEL PLATE.  
SLEEVE: TIN PLATE.
3. ALL ITEMS ARE SHIPPED LOOSE PIECE.
4. DIMENSIONS SHOWN IN "CONFIGURATION A" APPLY UNLESS OTHERWISE INDICATED.
5. SEE INSTRUCTION SHEET 408-32032 FOR CABLE PREPARATION AND TERMINATION DETAILS.

BULK	RG-178, 196	SEE CONFIGURATION B	2081228-2	2081214-2	2081206-3	2081200-2	1-2081205-2	SMA-JS-1D-B
SINGLE	RG-178, 196	SEE CONFIGURATION B	2081228-2	2081214-2	2081206-3	2081200-2	1-2081205-1	SMA-JS-1D-S
BULK	RG-405, RG-405 FLEX	SEE CONFIGURATION E	-	-	2081206-3	2081200-4	1-2081205-0	SMA-JS-1C-B
SINGLE	RG-405, RG-405 FLEX	SEE CONFIGURATION E	-	-	2081206-3	2081200-4	2081205-9	SMA-JS-1C-S
BULK	RG-58, 141, 142, 223, 400	SEE CONFIGURATION D	-	2081214-4	2081206-3	2081200-3	2081205-8	SMA-JS-1G-B
SINGLE	RG-58, 141, 142, 223, 400	SEE CONFIGURATION D	-	2081214-4	2081206-3	2081200-3	2081205-7	SMA-JS-1G-S
BULK	RD-316, K02252D	SEE CONFIGURATION C	-	2081214-6	2081206-3	2081200-2	2081205-6	SMA-JS-1B-B
SINGLE	RD-316, K02252D	SEE CONFIGURATION C	-	2081214-6	2081206-3	2081200-2	2081205-5	SMA-JS-1B-S
BULK	RG-174, 188, 316	SEE CONFIGURATION B	-	2081214-2	2081206-3	2081200-2	2081205-4	SMA-JS-1F-B
SINGLE	RG-174, 188, 316	SEE CONFIGURATION B	-	2081214-2	2081206-3	2081200-2	2081205-3	SMA-JS-1F-S
BULK	RG-402, RG-402 FLEX	SEE CONFIGURATION A	-	-	2081206-3	2081200-1	2081205-2	SMA-JS-1A-B
SINGLE	RG-402, RG-402 FLEX	SEE CONFIGURATION A	-	-	2081206-3	2081200-1	2081205-1	SMA-JS-1A-S
PACKAGING	CABLE TYPES USED	ALTERNATIVE CONFIGURATION VIEW	SLEEVE QTY. = 1	FERRULE QTY = 1	SOCKET CONTACT QTY = 1	JACK ASSEMBLY QTY = 1	PART NUMBER	PART NUMBER (CONFIGURABLE)

THIS DRAWING IS A CONTROLLED DOCUMENT.

DIMENSIONS:

mm

TOLERANCES UNLESS OTHERWISE SPECIFIED:

0 PLC ±  
1 PLC ±  
2 PLC ±  
3 PLC ±  
4 PLC ±  
ANGLES ±  
FINISH

MATERIAL SEE NOTES

SEE NOTES

DWN K. FOLTZ 14SEP2011  
CHK K. WEIDNER 15SEP2011  
APVD K. WEIDNER 15SEP2011

PRODUCT SPEC 108-60094  
APPLICATION SPEC  
WEIGHT -

Customer Drawing

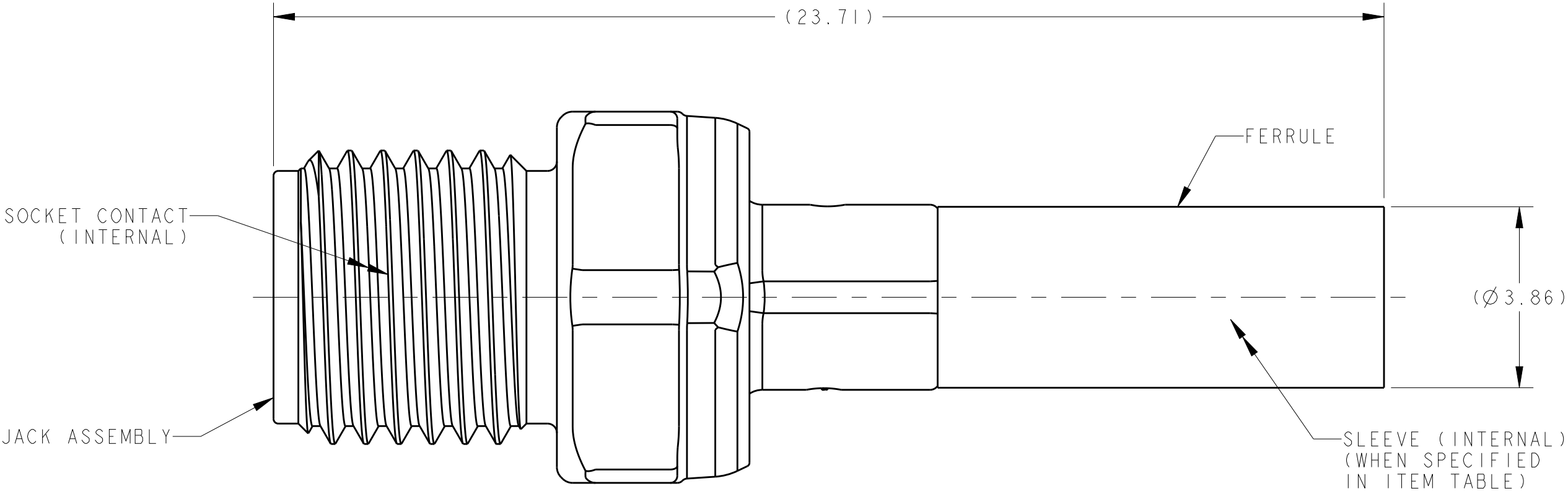
TE Connectivity

SMA, STRAIGHT, JACK KIT

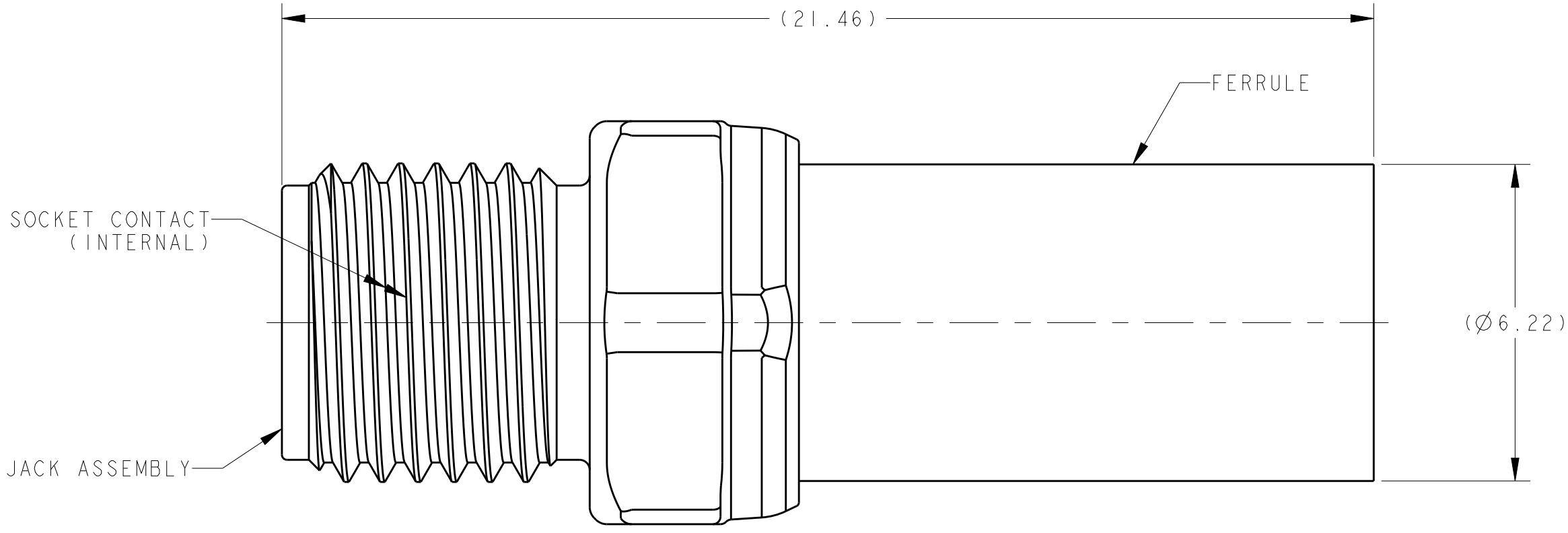
SIZE CAGE CODE DRAWING NO. A100779  
RESTRICTED TO -

SCALE 10:1 SHEET 1 OF 2 REV A

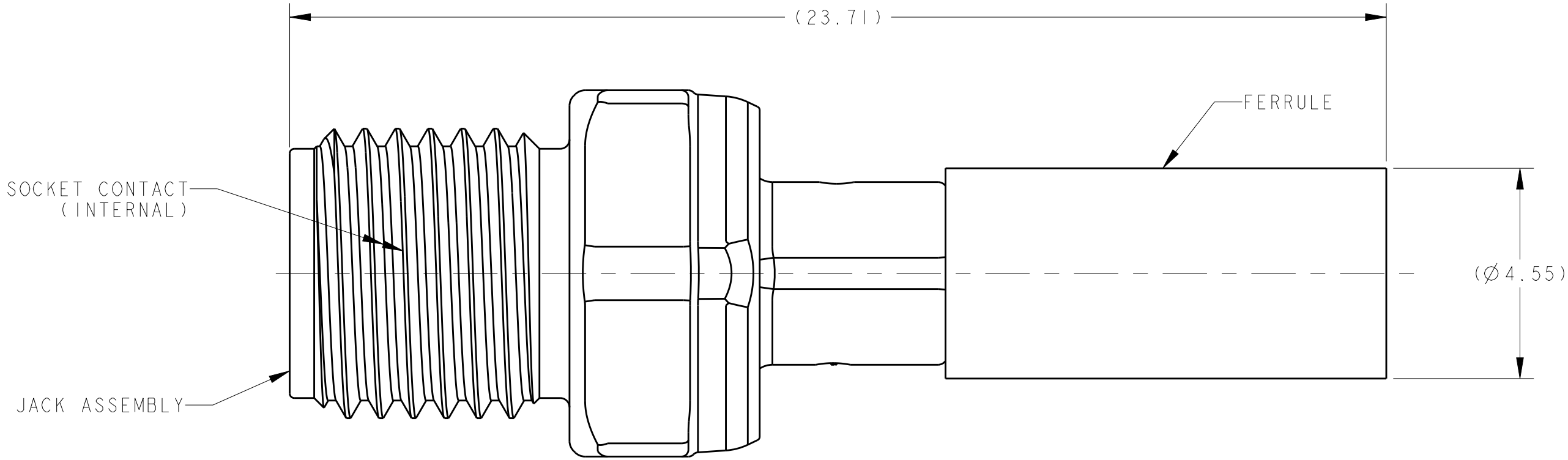
LOC		DIST		REVISIONS					
AJ		00		P	LTR	DESCRIPTION	DATE	DWN	APVD
				-	-	SEE SHEET 1	-	-	-



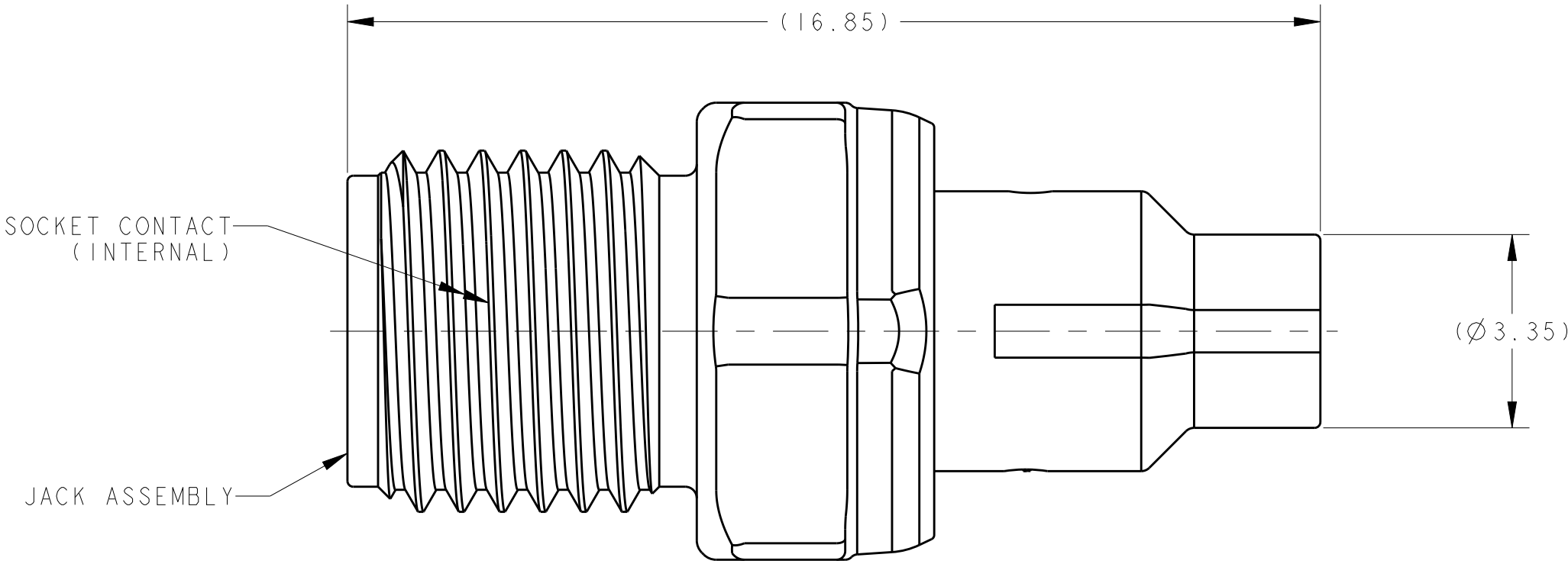
CONFIGURATION B  $\triangle 4$   
(SMA-JS-1F-S, SMA-JS-1F-B,  
SMA-JS-1D-S AND SMA-JS-1D-B ONLY)



CONFIGURATION D  $\triangle 4$   
(SMA-JS-1G-S AND SMA-JS-1G-B ONLY)



CONFIGURATION C  $\triangle 4$   
(SMA-JS-1B-S AND SMA-JS-1B-B ONLY)



CONFIGURATION E  $\triangle 4$   
(SMA-JS-1C-S AND SMA-JS-1C-B ONLY)

THIS DRAWING IS A CONTROLLED DOCUMENT.			DWN	K. FOLTZ	14SEP2011	TE Connectivity		
			CHK	K. WEIDNER	15SEP2011			
			APVD	K. WEIDNER	15SEP2011	NAME		
DIMENSIONS:			TOLERANCES UNLESS OTHERWISE SPECIFIED:			PRODUCT SPEC		
mm			0 PLC ±			108-60094		
			1 PLC ±			APPLICATION SPEC		
			2 PLC ±			408-32032		
			3 PLC ±			WEIGHT		
			4 PLC ±			-		
			ANGLES			Customer Drawing		
			FINISH			SCALE 10:1		
MATERIAL			SEE NOTES			SHEET 2 OF 2		
						REV A		