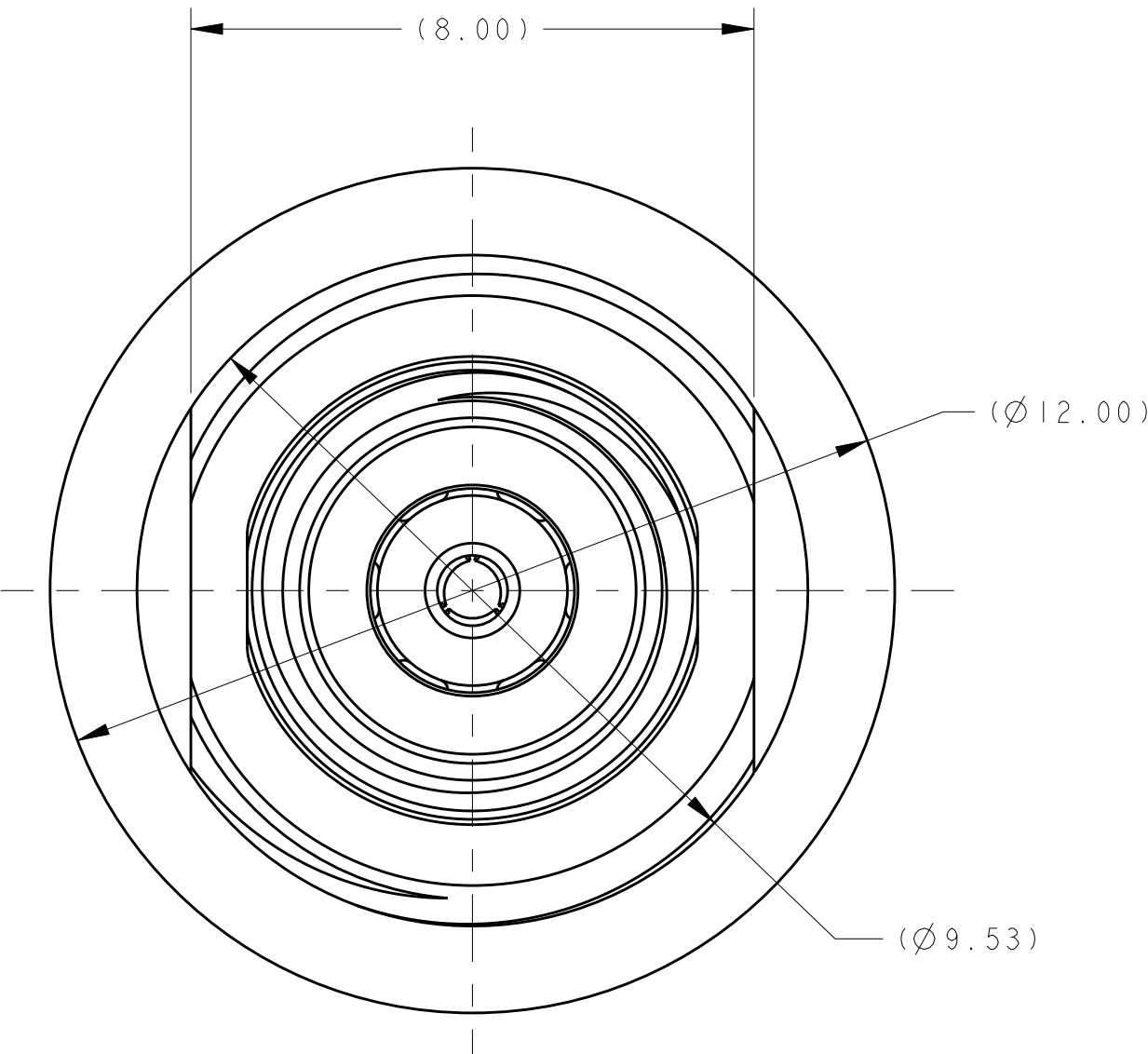
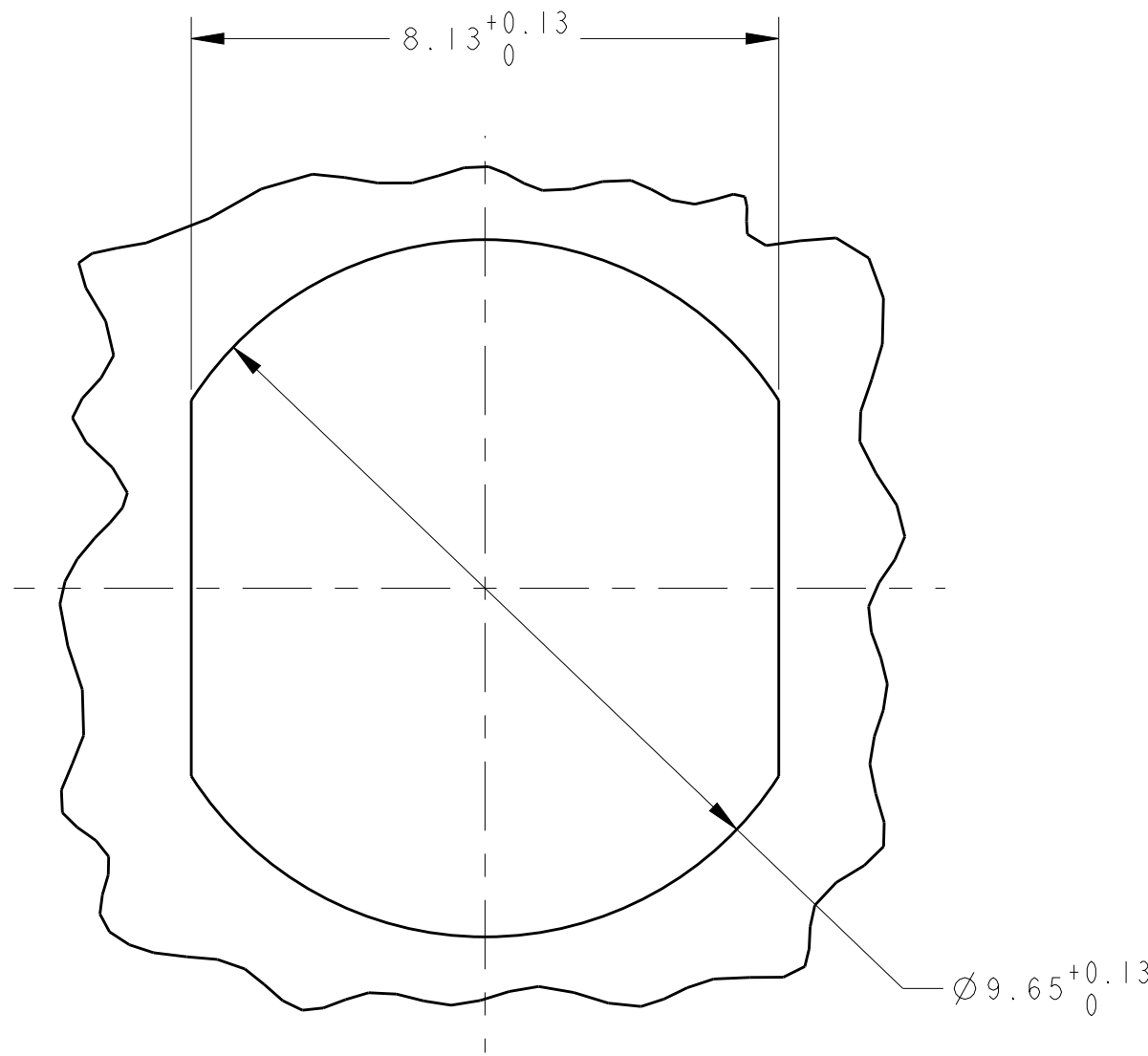


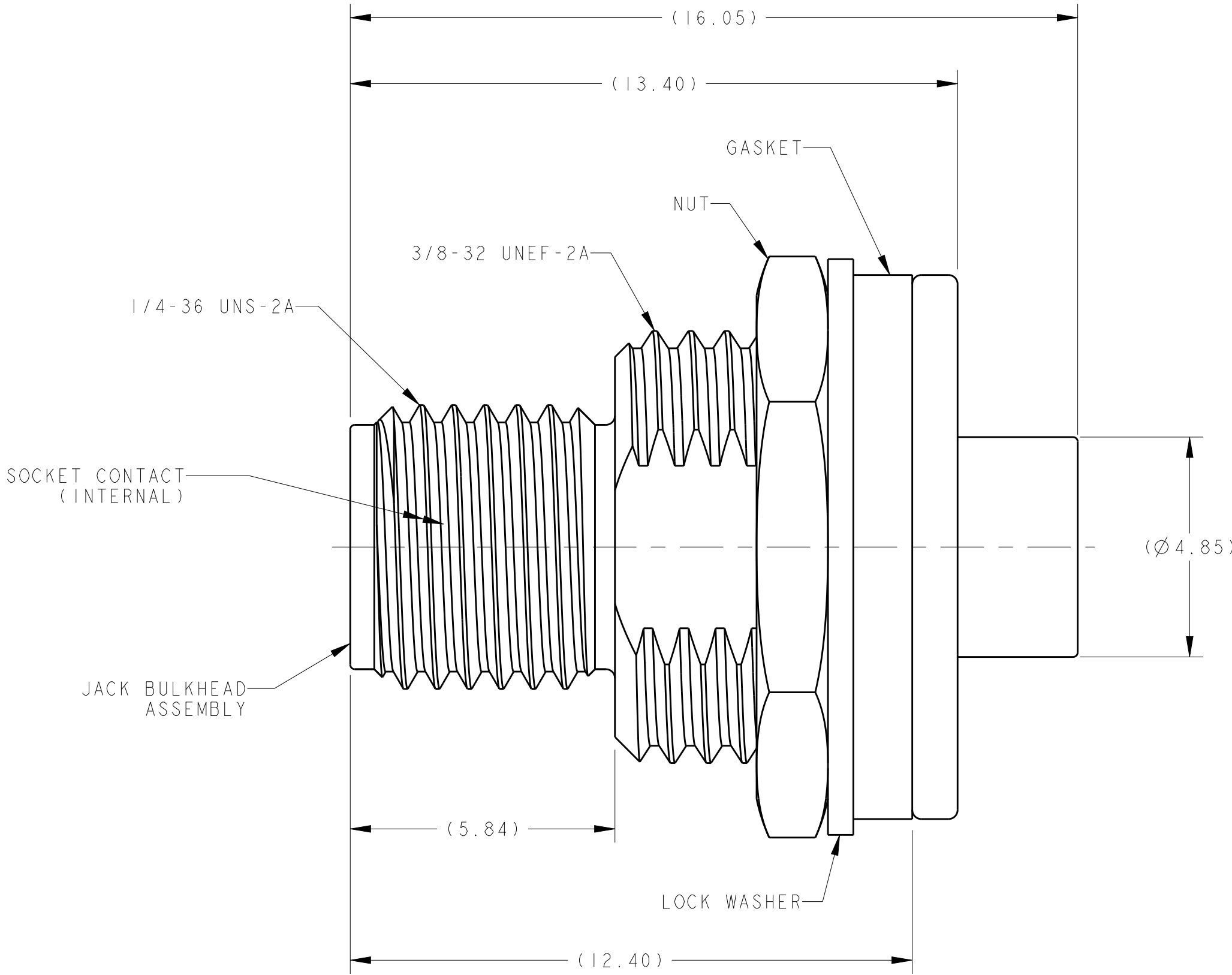
LOC	DIST	REVISIONS					
AJ	00	P	LTR	DESCRIPTION	DATE	DWN	APVD
			A	RELEASED.	24SEP2012	KF	KW



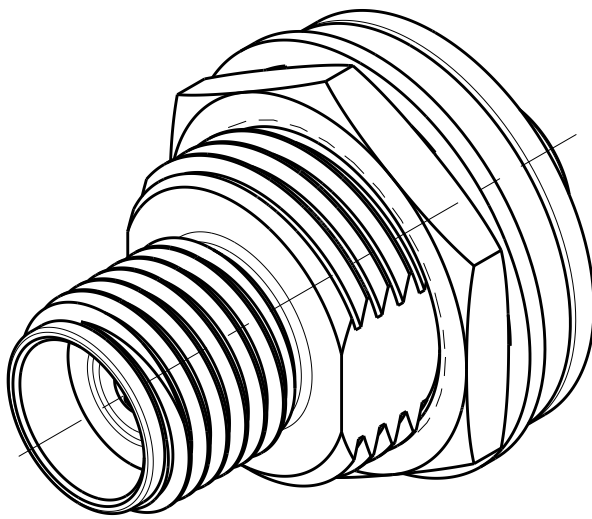
NUT, LOCKWASHER, & GASKET OMITTED FROM VIEW FOR CLARITY



RECOMMENDED PANEL CUTOUT



CONFIGURATION A
(SMA-JB-1A-S AND SMA-JB-1A-B ONLY)



SMA-JB-1A-S SHOWN.
SCALE 5:1

1. MATERIAL:
JACK BULKHEAD ASSEMBLY: JACK BULKHEAD HOUSING AND CRIMP END, ZINC;
DIELECTRIC, POLYMETHYLPENTENE.
SOCKET CONTACT, FERRULE, NUT AND SLEEVE: COPPER ALLOY.
LOCKWASHER: STAINLESS STEEL.
GASKET: SILICONE RUBBER.
2. PLATING:
JACK BULKHEAD ASSEMBLY: JACK BULKHEAD HOUSING, NICKEL PLATE;
CRIMP END, NICKEL PLATE OR TIN PLATE.
SOCKET CONTACT: GOLD PLATED AT INTERFACE, TIN PLATED AT CRIMP END.
FERRULE, LOCKWASHER, AND NUT: NICKEL PLATE.
SLEEVE: TIN PLATE.
3. ALL ITEMS ARE SHIPPED LOOSE PIECE.
- 3.175 MAX PANEL THICKNESS.
- DIMENSIONS SHOWN IN "CONFIGURATION A" APPLY UNLESS OTHERWISE INDICATED.
6. SEE INSTRUCTION SHEET 408-32032 FOR CABLE PREPARATION AND TERMINATION DETAILS.
7. THIS PRODUCT HAS NOT YET COMPLETED VALIDATION TESTING.

BULK	RG-178, 196	SEE CONFIGURATION B	3-1403077-9	1-329492-1	2081215-1	2081228-2	2081214-2	2081206-3	2081198-2	1-2081204-2	SMA-JB-1D-B
SINGLE	RG-178, 196	SEE CONFIGURATION B	3-1403077-9	1-329492-1	2081215-1	2081228-2	2081214-2	2081206-3	2081198-2	1-2081204-1	SMA-JB-1D-S
BULK	RG-405, RG-405 FLEX	SEE CONFIGURATION E	3-1403077-9	1-329492-1	2081215-1	-	-	2081206-3	2081198-4	1-2081204-0	SMA-JB-1C-B
SINGLE	RG-405, RG-405 FLEX	SEE CONFIGURATION E	3-1403077-9	1-329492-1	2081215-1	-	-	2081206-3	2081198-4	2081204-9	SMA-JB-1C-S
BULK	RG-58, 141, 142, 223, 400	SEE CONFIGURATION D	3-1403077-9	1-329492-1	2081215-1	-	2081214-4	2081206-3	2081198-3	2081204-8	SMA-JB-1G-B
SINGLE	RG-58, 141, 142, 223, 400	SEE CONFIGURATION D	3-1403077-9	1-329492-1	2081215-1	-	2081214-4	2081206-3	2081198-3	2081204-7	SMA-JB-1G-S
BULK	RD-316, K02252D	SEE CONFIGURATION C	3-1403077-9	1-329492-1	2081215-1	-	2081214-6	2081206-3	2081198-2	2081204-6	SMA-JB-1B-B
SINGLE	RD-316, K02252D	SEE CONFIGURATION C	3-1403077-9	1-329492-1	2081215-1	-	2081214-6	2081206-3	2081198-2	2081204-5	SMA-JB-1B-S
BULK	RG-174, 188, 316	SEE CONFIGURATION B	3-1403077-9	1-329492-1	2081215-1	-	2081214-2	2081206-3	2081198-2	2081204-4	SMA-JB-1F-B
SINGLE	RG-174, 188, 316	SEE CONFIGURATION B	3-1403077-9	1-329492-1	2081215-1	-	2081214-2	2081206-3	2081198-2	2081204-3	SMA-JB-1F-S
BULK	RG-402, RG-402 FLEX	SEE CONFIGURATION A	3-1403077-9	1-329492-1	2081215-1	-	-	2081206-3	2081198-1	2081204-2	SMA-JB-1A-B
SINGLE	RG-402, RG-402 FLEX	SEE CONFIGURATION A	3-1403077-9	1-329492-1	2081215-1	-	-	2081206-3	2081198-1	2081204-1	SMA-JB-1A-S
PACKAGING	CABLE TYPES USED	ALTERNATIVE CONFIGURATION VIEW	NUT QTY. = 1	LOCK WASHER QTY. = 1	GASKET QTY. = 1	SLEEVE QTY. = 1	FERRULE QTY. = 1	SOCKET CONTACT QTY. = 1	JACK BULKHEAD ASSEMBLY QTY. = 1	PART NUMBER	PART NUMBER (CONFIGURABLE)

THIS DRAWING IS A CONTROLLED DOCUMENT.

DIMENSIONS:
mm

MATERIAL
SEE NOTES

TOLERANCES UNLESS OTHERWISE SPECIFIED:

0 PLC ±
1 PLC ±
2 PLC ±
3 PLC ±
4 PLC ±
ANGLES ±
FINISH SEE NOTES

DWN
D. HUMBERT
CHK
K. WEIDNER
APVD

20SEP2011
20SEP2011
-

PRODUCT SPEC
108-60094
APPLICATION SPEC
-

WEIGHT
-

Customer Drawing

TE Connectivity

SMA, BULKHEAD PANEL MOUNT, JACK KIT

SIZE
A100779

CAGE CODE
C=SMA-JB-1

DRAWING NO
-

RESTRICTED TO
-

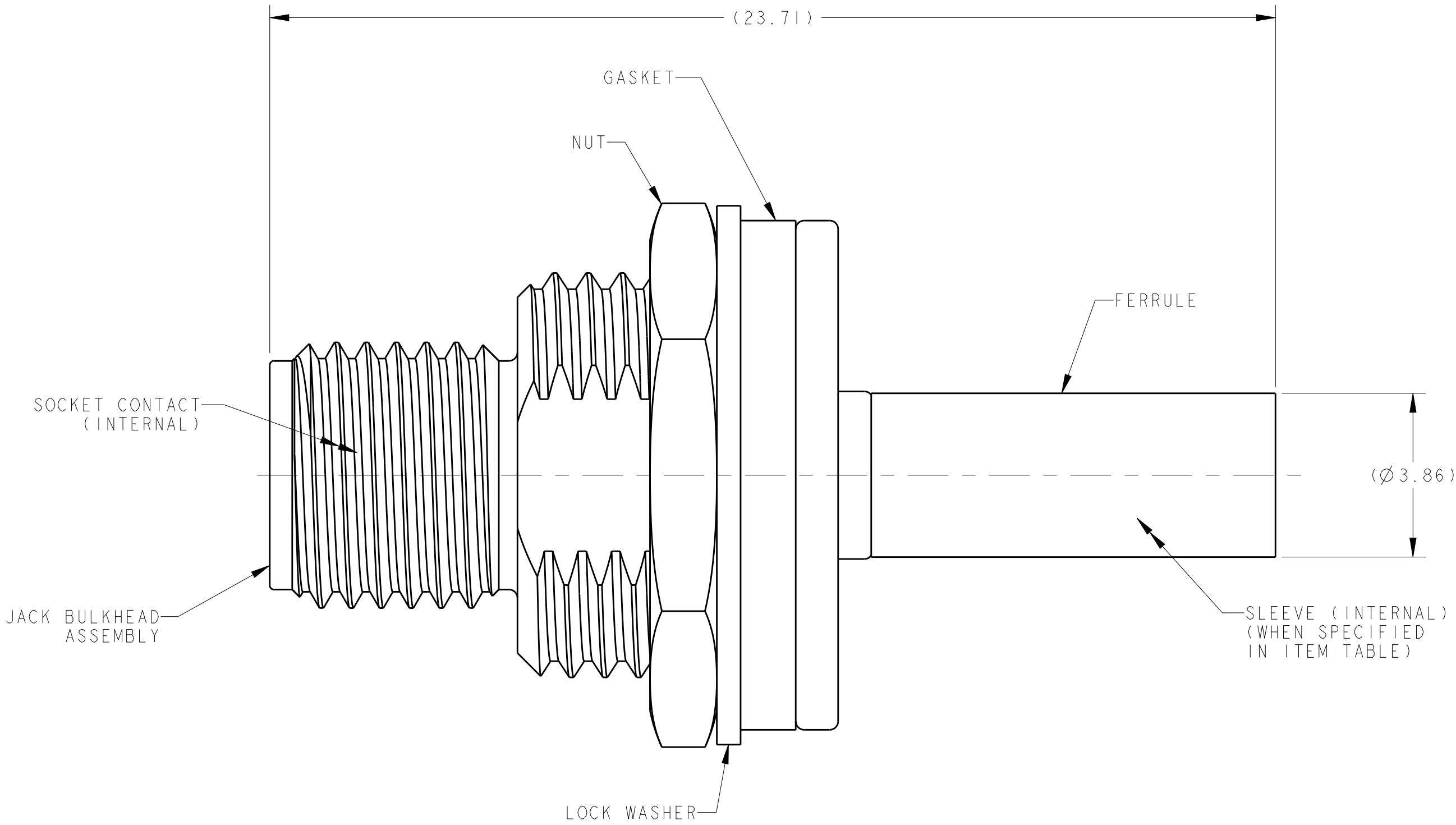
SCALE
10:1

SHEET
1

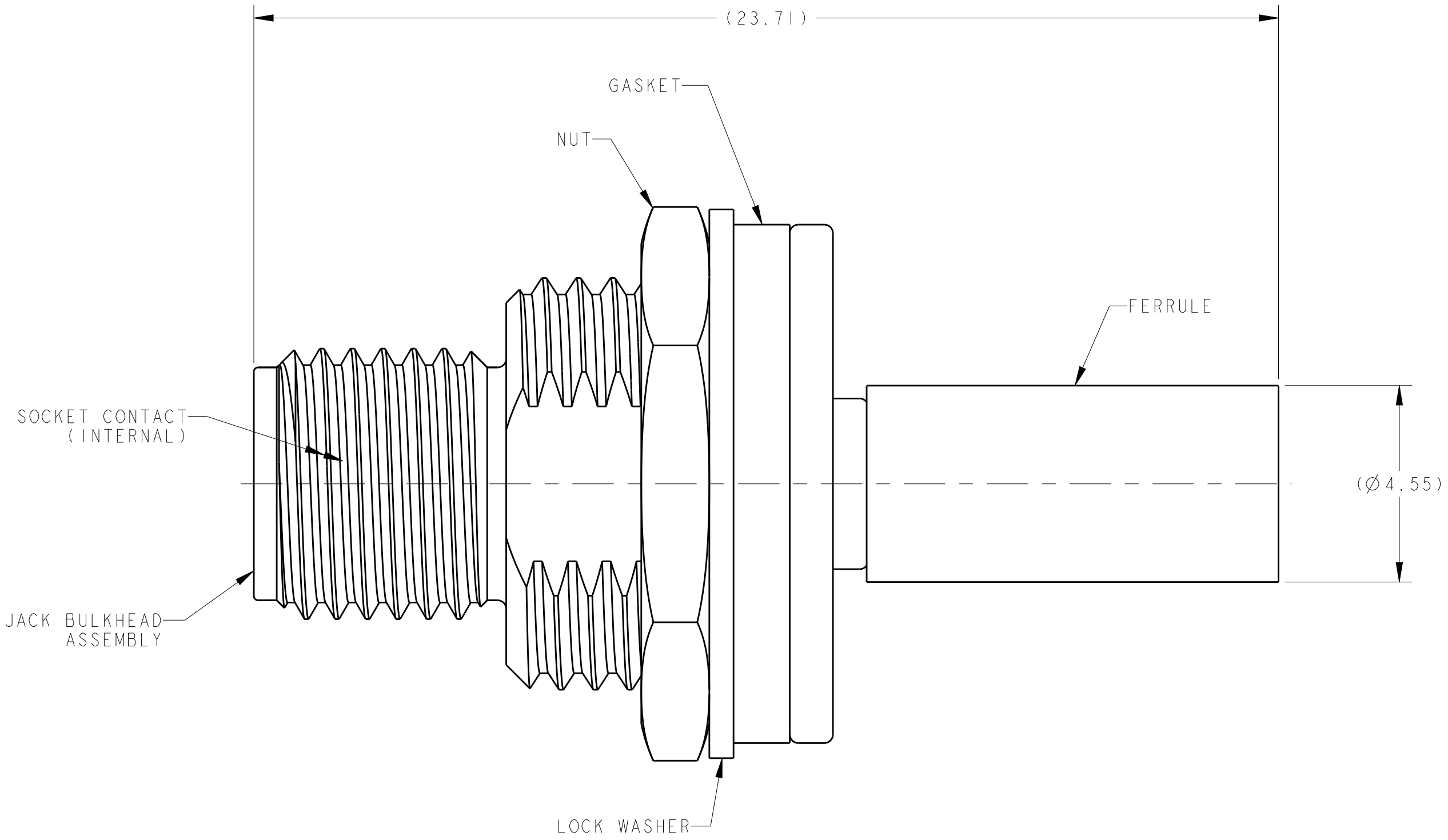
OF
2

REV
A

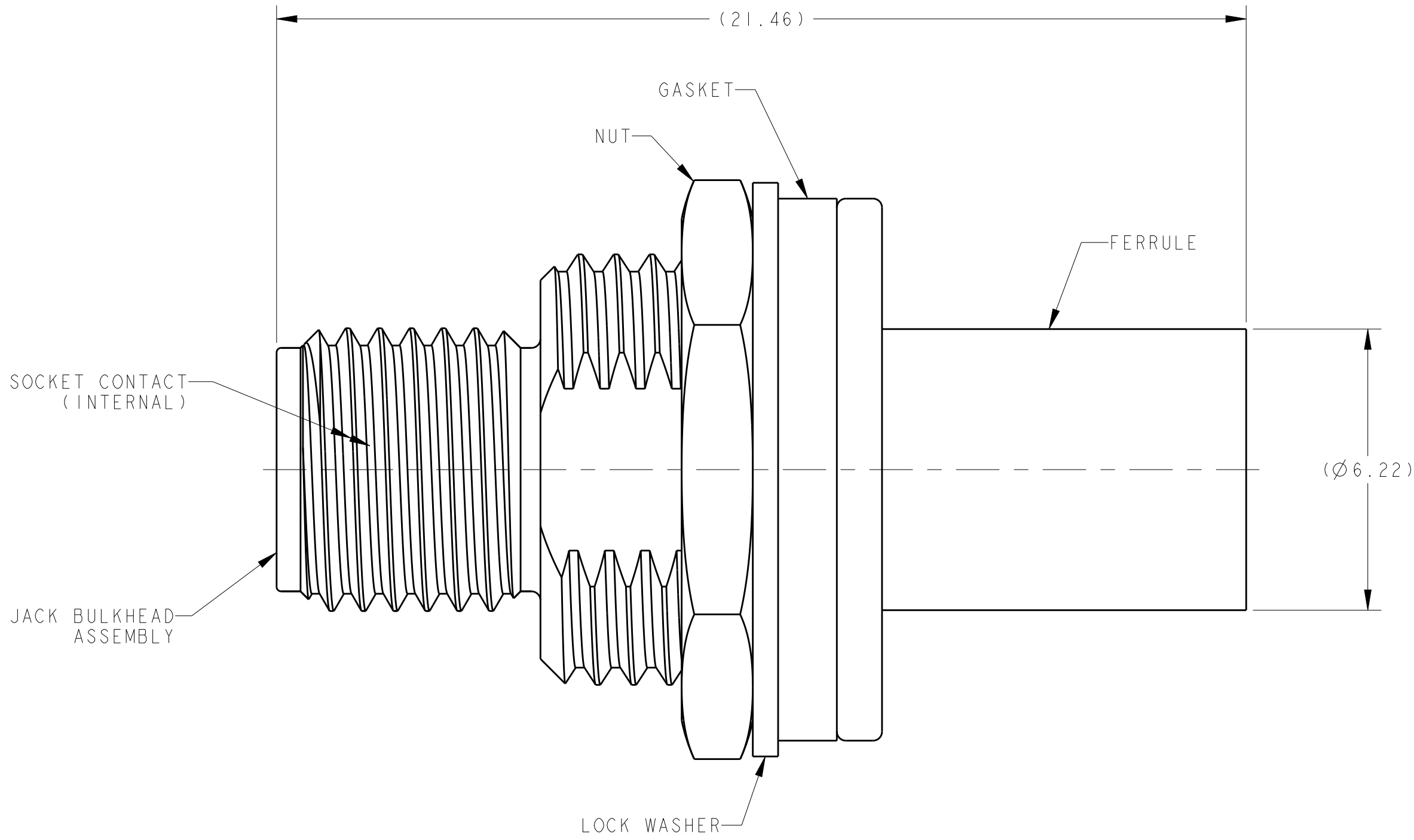
LOC		DIST		REVISIONS				
AJ		00		P	LTR	DESCRIPTION		DATE
						SEE SHEET 1		



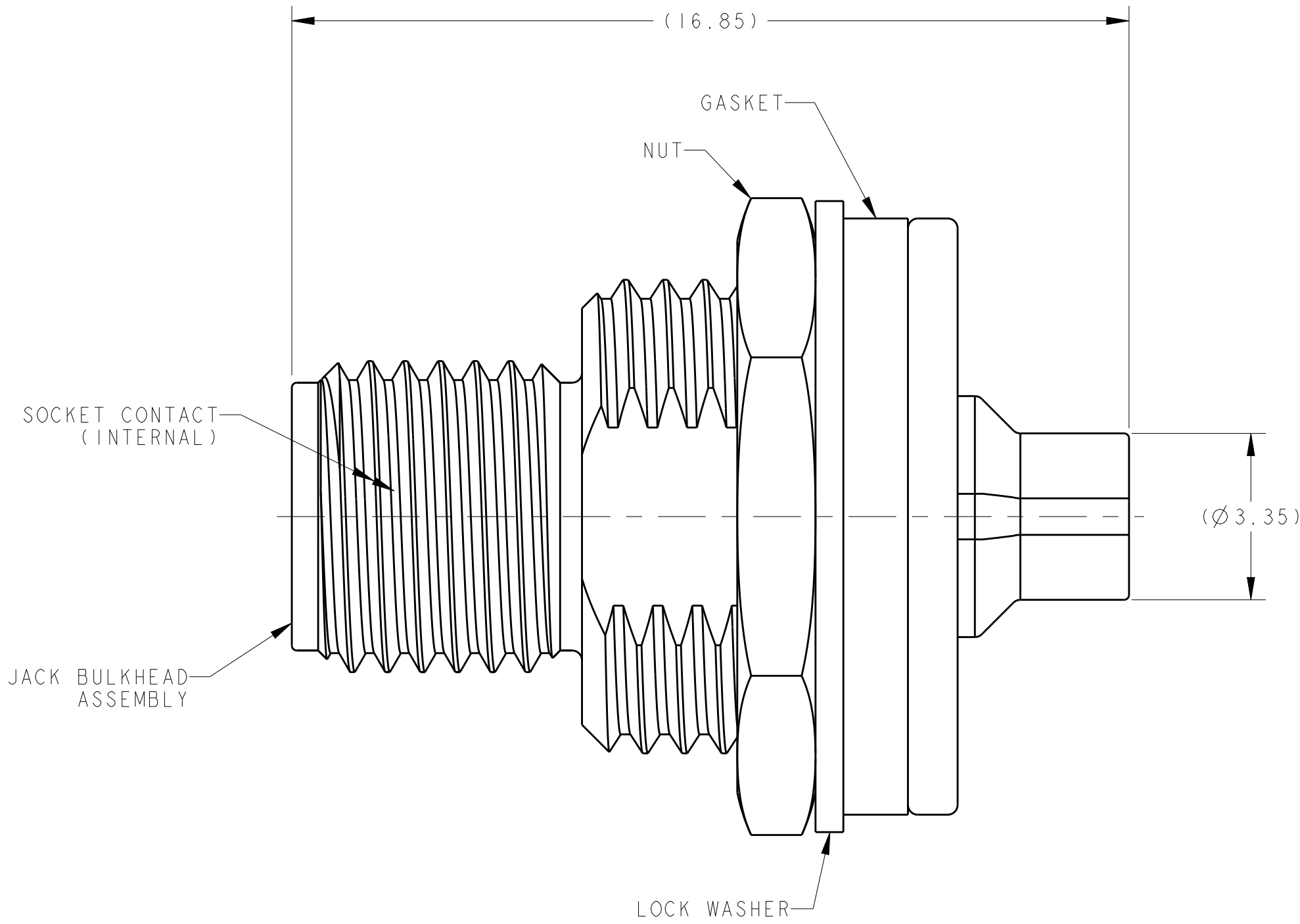
CONFIGURATION B $\triangle \frac{3}{5}$
(SMA-JB-1F-S, SMA-JB-1F-B,
SMA-JB-1D-S AND SMA-JB-1D-B ONLY)




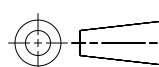
CONFIGURATION C $\triangle \frac{5}{5}$
(SMA-JB-1B-S AND SMA-JB-1B-B ONLY)



CONFIGURATION D $\triangle \frac{3}{5}$
(SMA-JB-1G-S AND SMA-JB-1G-B ONLY)



CONFIGURATION E $\triangle \frac{3}{5}$
(SMA-JB-1C-S AND SMA-JB-1C-B ONLY)

THIS DRAWING IS A CONTROLLED DOCUMENT.				DWN D. HUMBERT 20SEP2011	 TE Connectivity					
				CHK K. WEIDNER 20SEP2011						
DIMENSIONS:		TOLERANCES UNLESS OTHERWISE SPECIFIED:		APVD	NAME SMA, BULKHEAD PANEL MOUNT, JACK KIT					
mm		0 PLC ±		PRODUCT SPEC 108-60094 APPLICATION SPEC 408-32032						
		1 PLC ±								
		2 PLC ±								
		3 PLC ±								
		408-32032								
MATERIAL		FINISH		WEIGHT		SIZE	CAGE CODE	DRAWING NO	RESTRICTED TO	
SEE NOTES		SEE NOTES		-		A1	100779	C=SMA-JB-1	-	
Customer Drawing				SCALE		10:1	SHEET	2 OF 2	REV	A