

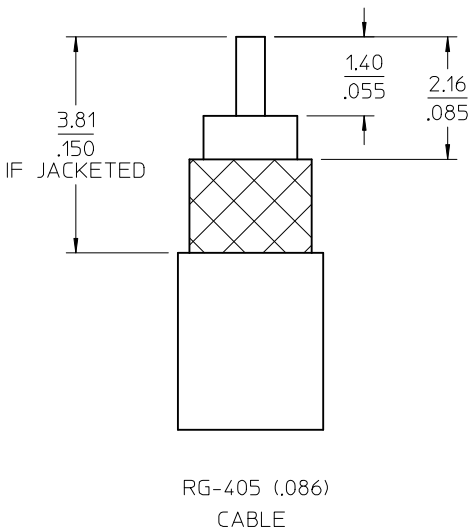
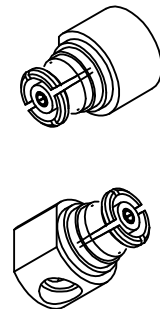
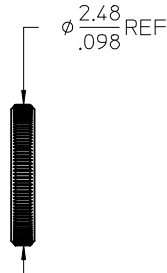
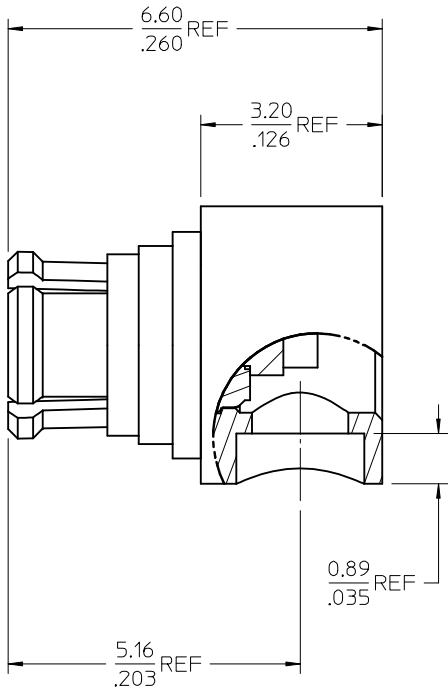
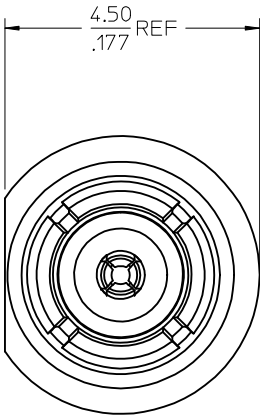
MATERIALS AND FINISHES

BODY: BERYLLIUM COPPER
PLATED GOLD

CONTACT: BERYLLIUM COPPER
PLATED GOLD

INSULATOR: TEFLON

EMI RING, CAP: BRASS
PLATED GOLD



MIL-STD-348A, FIG. 326.1	INTERFACE
SPECIFICATION	DESCRIPTION

73415-3035	MOLEX INTERNAL USE ONLY NOT AVAILABLE	N/A	N/A	N/A
73415-3034	BULK PACK	30 u"	30 u"	30 u"
73415-3033	BULK PACK	8 u"	8 u"	8 u"
73415-3032	PLACE 73415-3030 INTO SMALL TRAY	30 u"	50 u"	30 u"
73415-3031	1 COMPLETE ASSEMBLY 73415-3030 PER BAG	30 u"	50 u"	30 u"
73415-3030	BULK PACK	30 u"	50 u"	30 u"
PART NO.	PACKAGING	GOLD ON BODY	GOLD ON CONT	GOLD RING/CAP

CHG: UPDATE VIEW EC NO: URF2015-0141 DRWN:JLEE02 CHKD:SSS APPR:WSP INK A10	DESCRIPTION REV	QUALITY SYMBOLS ▽=0 ▽=0	GENERAL TOLERANCES (UNLESS SPECIFIED) mm INCH 4 PLACES ± --- ± --- 3 PLACES ± --- ± --- 2 PLACES ± --- ± --- 1 PLACE ± --- ± --- ANGULAR ± 2 °	DIMENSION STYLE MM/IN DRAWN BY DATE SSS 2001/03/29 CHECKED BY DATE TEF 2001/03/29 APPROVED BY DATE GMH 2001/03/29	SCALE DESIGN UNITS METRIC	TITLE SMP JACK, R/A FOR 086 CABLE, 50 OHM SMP-JC	MATERIAL NO. SEE TABLE SIZE C	DOCUMENT NO. SD-73415-303	SHEET NO. 1 OF 1
		DRAFT WHERE APPLICABLE MUST REMAIN WITHIN DIMENSIONS			THIS DRAWING CONTAINS INFORMATION THAT IS PROPRIETARY TO MOLEX INCORPORATED AND SHOULD NOT BE USED WITHOUT WRITTEN PERMISSION				