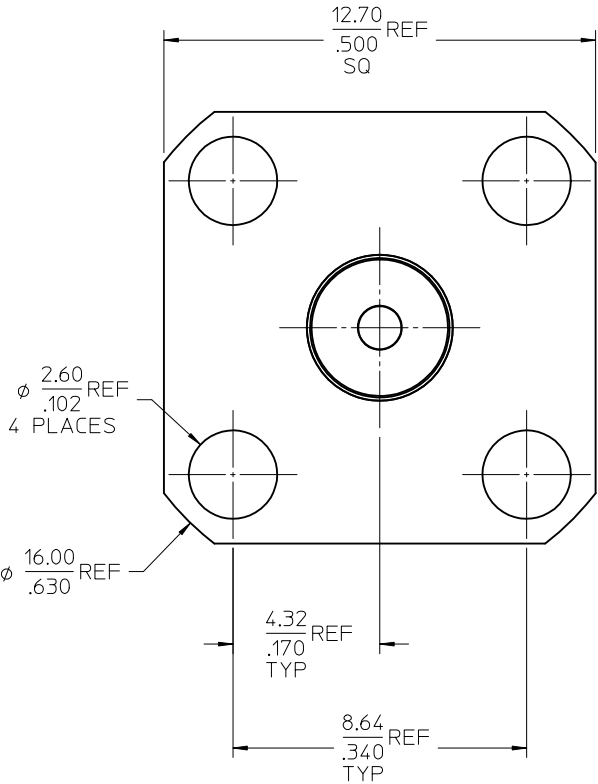
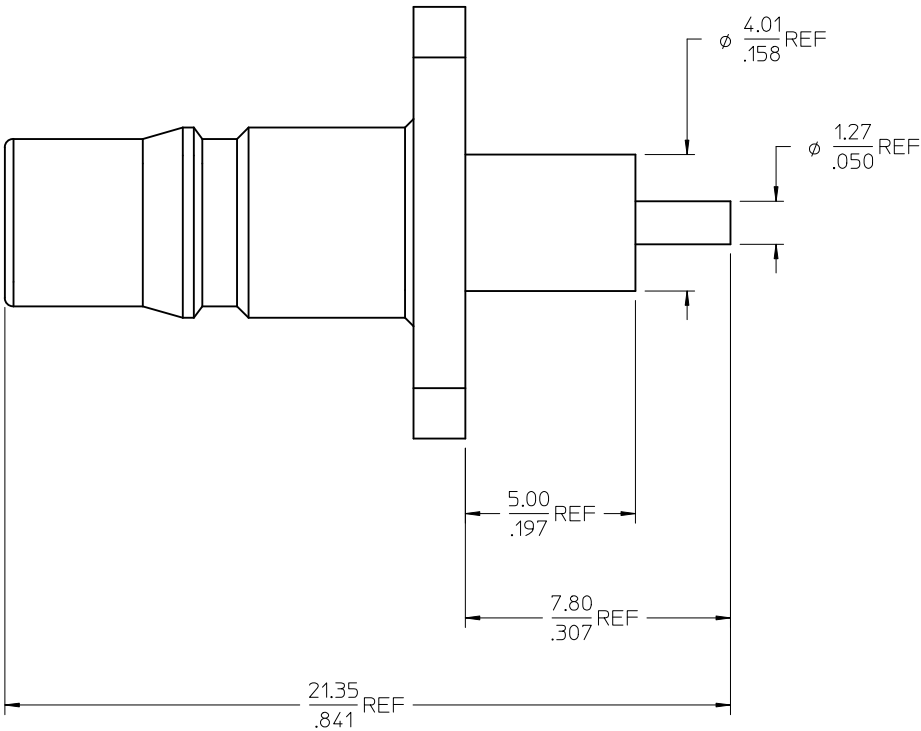
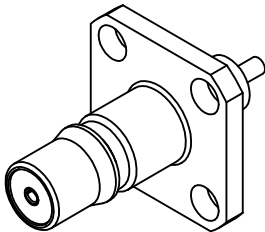


MATERIALS AND FINISHES:

BODY BRASS  
PLATED GOLD

CENTER CONTACT BERYLLIUM COPPER  
PLATED GOLD

INSULATOR TEFLON



PS-89675-1330	QMA
SPECIFICATION	DESCRIPTION

73254-0201	ONE PIECE 73254-0200 PER BAG
73254-0200	BULK
PART NO.	PACKAGING

A	CHG: CLARIFIED BAGGING. EC NO: URF2010-0369 DRWN: ROBERTSON 2009/12/18 CHKD: SSS 2009/12/18 APPR: WIENER 2009/12/18	DESCRIPTION REV	QUALITY SYMBOLS ▽=0 ▽=0	GENERAL TOLERANCES (UNLESS SPECIFIED) mm INCH 4 PLACES ± --- ± --- 3 PLACES ± --- ± --- 2 PLACES ± --- ± --- 1 PLACE ± --- ± --- ANGULAR ± 2 ° DRAFT WHERE APPLICABLE MUST REMAIN WITHIN DIMENSIONS	DIMENSION STYLE MM/IN DRAWN BY DATE JM 2004/10/11 CHECKED BY DATE SSS 2004/10/11 APPROVED BY DATE	SCALE DESIGN UNITS METRIC	TITLE QMA JACK, STRAIGHT SQUARE FLANGE RECEPTACLE EWR-2606, QMA-JR molex MOLEX INCORPORATED	DOCUMENT NO. SD-73254-020	SHEET NO. 1 OF 1