

MATERIALS AND FINISHES

COUPLING SLEEVE: BRASS
PLATED NICKEL

BODY: BRASS
PLATED TRI-M3

RETENTION CAP: BRASS
PLATED TRI-M3

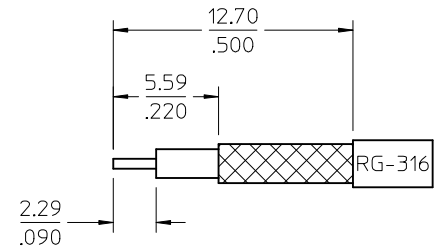
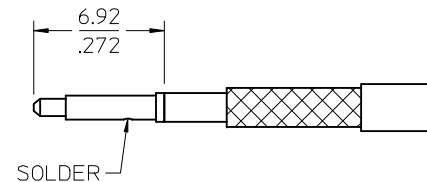
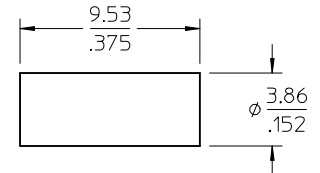
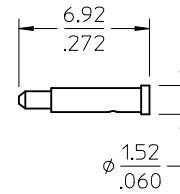
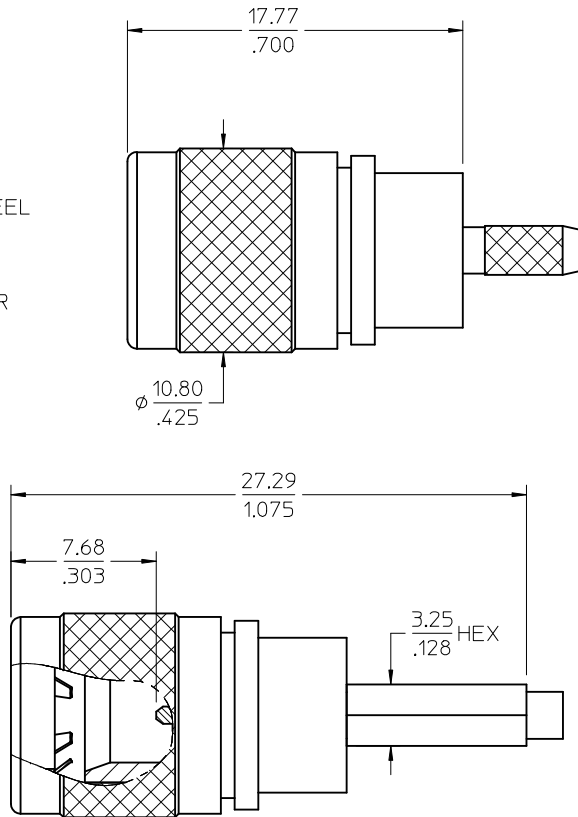
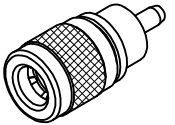
INSULATORS: TEFLON

RETENTION SPRING: STAINLESS STEEL
PASSIVATED

GROUND SPRING: BERYLLIUM COPPER
PLATED GOLD





CONTACT: BRASS
PLATED GOLD
OVER HIGH PHOSPHOR NICKEL

CRIMP TUBE: BRASS
PLATED NICKEL



RECOMMENDED CABLE STRIP

73254-0091	ONE PIECE 73254-0090 PER BAG
73254-0090	BULK
PART NO.	PACKAGING

CHG: UPDATED PLATING OF CONTACT PER RF14-E039. EC NO: URF2014-0159 DRWN:RYEH CHKD: APPR:MHUANG	2013/09/06 2013/09/23	DESCRIPTION REV	QUALITY SYMBOLS <div></div> <div></div> <div></div>	GENERAL TOLERANCES (UNLESS SPECIFIED)		DIMENSION STYLE MM/IN		SCALE 5:1	DESIGN UNITS INCH	 THIRD ANGLE PROJECTION			
				4 PLACES	± ---	± ---	DRAWN BY SSS	DATE 2003/10/07	TITLE QMA PLUG STRAIGHT RG316 50 OHMS QMA-PC, EWR-2187				
				3 PLACES	± ---	± ---	CHECKED BY TEF	DATE 2003/10/07					
				2 PLACES	± ---	± ---	APPROVED BY GMH	DATE 2003/10/07					
				1 PLACE	± ---	± ---	molex						
				0 PLACE	± ---	± ---							
				ANGULAR ± 2 °			MATERIAL NO.		DOCUMENT NO.		SHEET NO.		
				DRAFT WHERE APPLICABLE MUST REMAIN WITHIN DIMENSIONS			SEE TABLE		SD-73254-009 1 OF 1				
							THIS DRAWING CONTAINS INFORMATION THAT IS PROPRIETARY TO MOLEX INCORPORATED AND SHOULD NOT BE USED WITHOUT WRITTEN PERMISSION						