

MATERIALS AND FINISHES

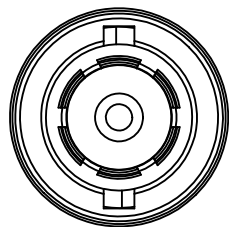
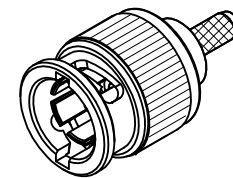
BODY, CRIMP TUBE, WASHER: BRASS  
PLATED NICKEL

CENTER CONTACT: BRASS  
PLATED GOLD

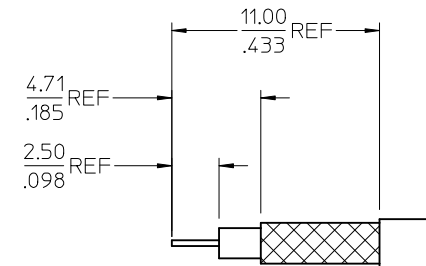
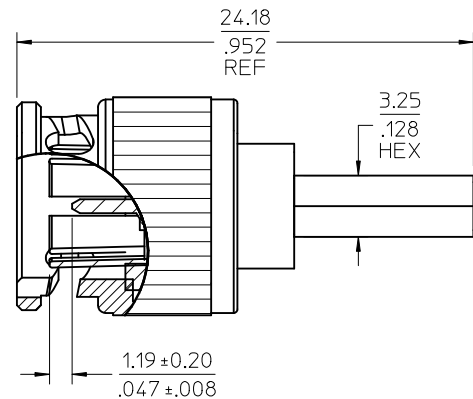
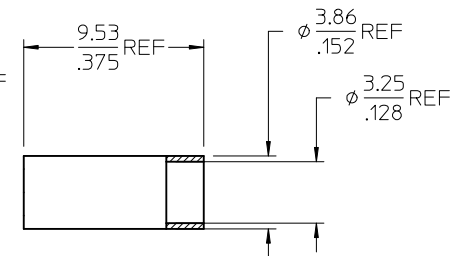
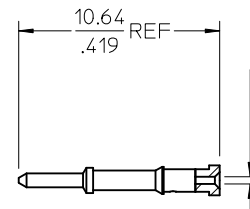
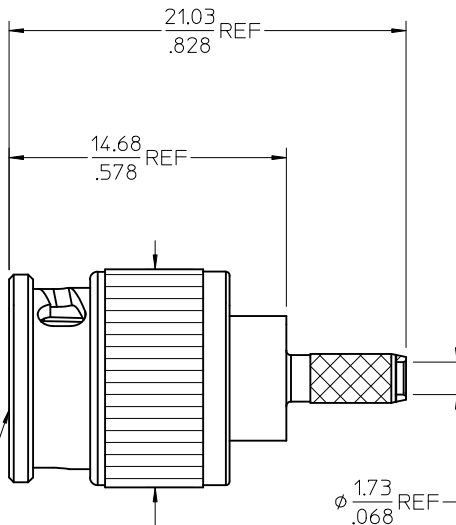
INSULATOR: TEFLON

GASKET: SILICONE RUBBER

WAVE WASHER: BERYLLIUM COPPER  
PLATED NICKEL



MINI BNC PLUG  
INTERFACE



RECOMMENDED  
STRIP DIMENSIONS

|            |                         |
|------------|-------------------------|
| 73171-2641 | 73171-2640, ONE PER BAG |
| 73171-2640 | BULK                    |
| PART NO.   | PACKAGING               |
|            |                         |

|  |   |             |                                   |                                       |       |                          |  |       |  |  |                     |  |
|--|---|-------------|-----------------------------------|---------------------------------------|-------|--------------------------|--|-------|--|--|---------------------|--|
| CHG: UPDATED VIEWS<br>ADDED ASSY VIEW.<br><br>A3 | EC NO: URF2011-0456<br>DRAWN: AROBERTSON 2011/01/26<br>CHKD: SSS 2011/01/26<br>APPR: JWIENER 2011/01/26 | DESCRIPTION | QUALITY SYMBOLS<br><br>▽=0<br>▽=0 | GENERAL TOLERANCES (UNLESS SPECIFIED) |       | DIMENSION STYLE<br>MM/IN |  | SCALE | DESIGN UNITS<br>METRIC   | THIRD ANGLE<br>PROJECTION  |                     |  |
|  |   |             |                                   |                                       | mm    | INCH                     | DRAWN BY DATE<br>JM 2005/05/05                             |       | TITLE<br><br>MINI BNC PLUG, STR<br>RG179, 75 OHMS<br>EWR-2786, MINI BNC-PC<br><br>MOLEX INCORPORATED |  |                     |  |
|  |   |             |                                   | 4 PLACES                              | ± --- | ± ---                    | CHECKED BY DATE<br>JM 2005/05/05                           |       |  |  |                     |  |
|  |   |             |                                   | 3 PLACES                              | ± --- | ± ---                    | APPROVED BY DATE<br>JDW 2005/05/05                         |       |  |  |                     |  |
|  |   |             |                                   | 2 PLACES                              | ± --- | ± ---                    | MATERIAL NO. DOCUMENT NO.                                  |       |  |  |                     |  |
|  |   |             |                                   | 1 PLACE                               | ± --- | ± ---                    | SEE TABLE  |       | SD-73171-264   |  | SHEET NO.<br>1 OF 1 |  |
|  |   |             |                                   | ANGULAR ± 2 °                         |       |                          | DRAFT WHERE APPLICABLE<br>MUST REMAIN<br>WITHIN DIMENSIONS |       |  | SIZE C THIS DRAWING CONTAINS INFORMATION THAT IS PROPRIETARY TO MOLEX INCORPORATED AND SHOULD NOT BE USED WITHOUT WRITTEN PERMISSION |                     |  |
|  |   |             |                                   |                                       |       |                          |  |       |  |  |                     |  |
|  |   |             |                                   |                                       |       |                          |  |       |  |  |                     |  |
|  |   |             |                                   |                                       |       |                          |  |       |  |  |                     |  |
|  |   |             |                                   |                                       |       |                          |  |       |  |  |                     |  |