

MATERIALS AND FINISHES

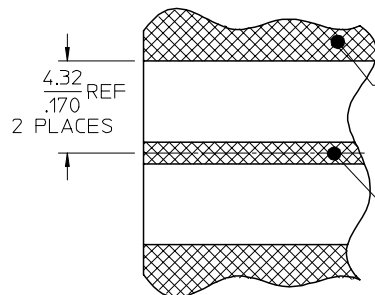
BODY BRASS
PLATED SEE TABLE

CENTER CONTACT BERYLLIUM COPPER
PLATED GOLD

INSULATOR TEFLON

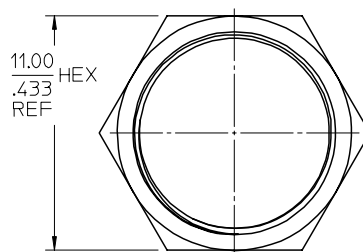
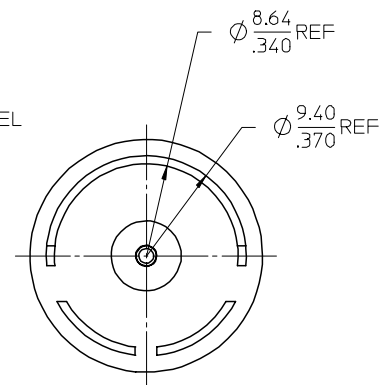
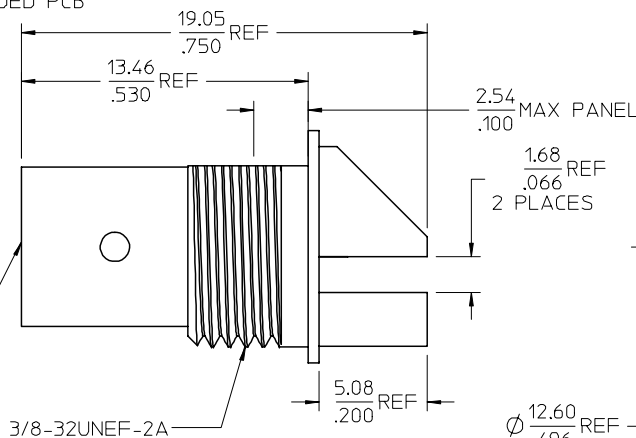
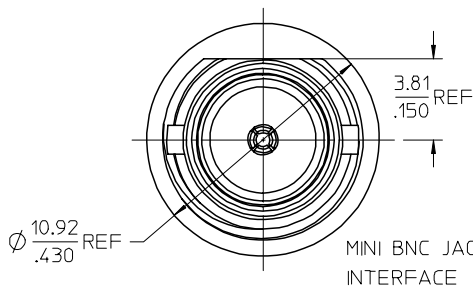
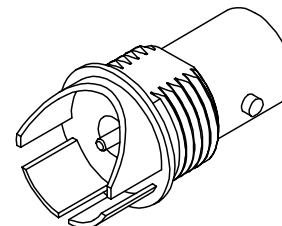
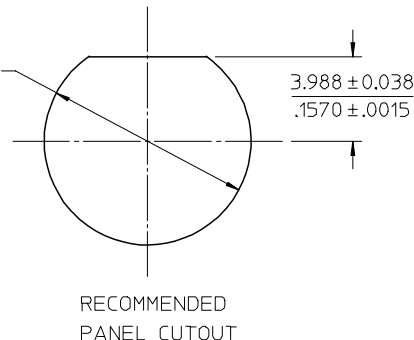
JAM NUT BRASS
PLATED NICKEL

LOCKWASHER PHOSPHOR BRONZE
PLATED NICKEL



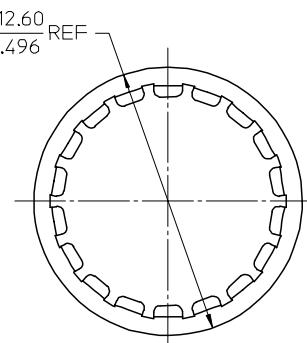
RECOMMENDED PCB
LAYOUT

$\phi 9.70 \pm 0.05$
.382 $\pm .002$

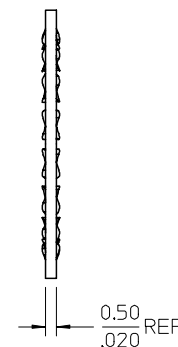


JAM NUT

2.15 REF
.085



LOCKWASHER



73171-2742	73171-2741, ONE PER BAG
73171-2741	NICKEL/BULK
73171-2740	GOLD/BULK
PART NO.	PLATING/PACKAGING

PS-89675-3500	INTERFACE
SPECIFICATION	DESCRIPTION

CHG: ADDED P/N
73171-2742
UPDATED BORDER
EC NO: URF2007-0326
DRAWN: TELAHERTY 2007/03/14
CHKD: SHAH 2007/03/14
APPR: JIM ENER 2007/03/14
DESCRIPTION
REV

QUALITY
SYMBOLS
=0
=0

GENERAL TOLERANCES
(UNLESS SPECIFIED)

	mm	INCH
4 PLACES	± .005	± .0005
3 PLACES	± .003	± .0003
2 PLACES	± .002	± .0002
1 PLACE	± .001	± .0001

ANGULAR ± 2 °

DRAFT WHERE APPLICABLE
MUST REMAIN
WITHIN DIMENSIONS

DIMENSION STYLE
MM/IN

DRAWN BY
JM

DATE
2005/11/21

CHECKED BY
JM

DATE
2005/11/21

APPROVED BY
JDW

DATE
2005/11/21

MATERIAL NO.
SEE TABLE

SCALE
DESIGN UNITS
METRIC

THIRD ANGLE
PROJECTION

TITLE
MINI BNC JACK, BULKHEAD
EDGEMOUNT, PCB, 75 OHMS
EWR-2953, MINI BNC-J/PCB

MOLEX INCORPORATED

SD-73171-274

SHEET NO.
1 OF 1

THIS DRAWING CONTAINS INFORMATION THAT IS PROPRIETARY TO MOLEX
INCORPORATED AND SHOULD NOT BE USED WITHOUT WRITTEN PERMISSION