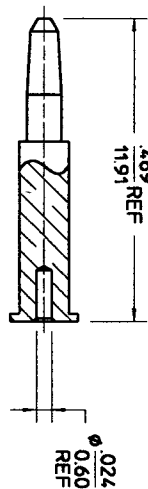
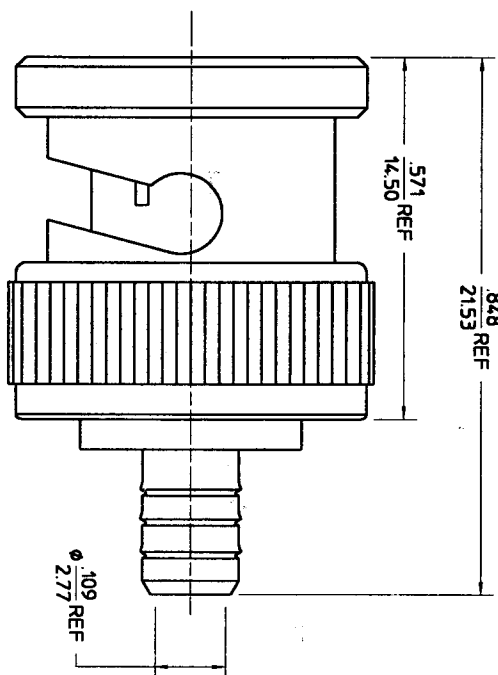
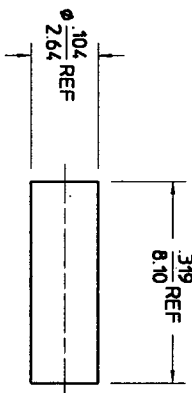


MATERIALS AND FINISHES

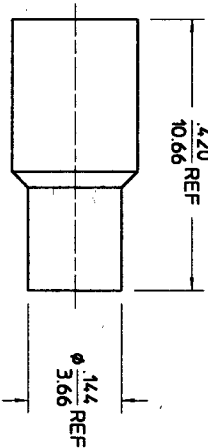
- BODY: BRASS  
PLATED: NICKEL
- CENTER CONTACT: BRASS  
PLATED: GOLD
- OUTER CONTACT: BRASS  
PLATED: NICKEL
- CRIMP TUBE: COPPER  
PLATED: TIN
- COUPLING NUT: ZINC  
PLATED: NICKEL
- WASHER: BRASS  
PLATED: NICKEL
- SPRING WASHER: BeCu  
PLATED: NICKEL
- GASKET: SILICONE RUBBER
- SLEEVE: TEFLON
- INSULATOR: TEFLON



CONTACT



SLEEVE



CRIMP TUBE

PART # 73103-5001

PS-73598-0022

ELECTRO/MECH. PERFORMANCE

MIL-STD-348A FIG. 301-1

INTERFACE SPECIFICATION

SPECIFICATION

DESCRIPTION

CHG. NEW RELEASE  
EC NO. URF02-05  
DRWN: CLAIRE LEE  
CHK: JOHNSON CHANG  
APPR: HSEN HUANG

UNLESS OTHERWISE SPECIFIED DIMS  
ARE INCHES AND ANGLES ARE DEGREES.  
1. 1/63 ALL OVER.  
2. NO CHATTER OR NON-UNIFORM  
SURFACE FINISH ALLOWED.  
3. PARTS TO BE FREE OF BURRS  
& SHARP EDGES .005 MAX BREAK.  
4. EXTERNAL THREADS TO BE ROLLED  
OR SINGLE POINT.  
5. DIAMETERS TO BE CONCENTRIC  
WITHIN .003 TIR.

QUALITY  
SYMBOLS  
MAJOR  
CRITICAL  
C.

GENERAL TOLERANCES  
(UNLESS SPECIFIED)

	MM	INCH
1. PLACES		
2. PLACES		
3. PLACES		
4. PLACES		
5. PLACES		
6. PLACES		
7. PLACES		
8. PLACES		
9. PLACES		
10. PLACES		
11. PLACES		
12. PLACES		
13. PLACES		
14. PLACES		
15. PLACES		
16. PLACES		
17. PLACES		
18. PLACES		
19. PLACES		
20. PLACES		
21. PLACES		
22. PLACES		
23. PLACES		
24. PLACES		
25. PLACES		
26. PLACES		
27. PLACES		
28. PLACES		
29. PLACES		
30. PLACES		
31. PLACES		
32. PLACES		
33. PLACES		
34. PLACES		
35. PLACES		
36. PLACES		
37. PLACES		
38. PLACES		
39. PLACES		
40. PLACES		
41. PLACES		
42. PLACES		
43. PLACES		
44. PLACES		
45. PLACES		
46. PLACES		
47. PLACES		
48. PLACES		
49. PLACES		
50. PLACES		
51. PLACES		
52. PLACES		
53. PLACES		
54. PLACES		
55. PLACES		
56. PLACES		
57. PLACES		
58. PLACES		
59. PLACES		
60. PLACES		
61. PLACES		
62. PLACES		
63. PLACES		
64. PLACES		
65. PLACES		
66. PLACES		
67. PLACES		
68. PLACES		
69. PLACES		
70. PLACES		
71. PLACES		
72. PLACES		
73. PLACES		
74. PLACES		
75. PLACES		
76. PLACES		
77. PLACES		
78. PLACES		
79. PLACES		
80. PLACES		
81. PLACES		
82. PLACES		
83. PLACES		
84. PLACES		
85. PLACES		
86. PLACES		
87. PLACES		
88. PLACES		
89. PLACES		
90. PLACES		
91. PLACES		
92. PLACES		
93. PLACES		
94. PLACES		
95. PLACES		
96. PLACES		
97. PLACES		
98. PLACES		
99. PLACES		
100. PLACES		

DRAFT WHERE APPLICABLE MUST  
REFLECT WITHIN DIMENSIONS

SCALE  
DESIGN UNITS  
DRAWN BY & DATE  
CLARE LEE 08/21/01  
CHECKED BY & DATE  
REMOVED BY & DATE  
CAD FILENAME

TITLE: 50 OHM PLUG, FOR RG174, 316 CABLE  
BNC-PC  
MATERIAL NO. SD-73103-5001  
DRAWING NO. SD-73103-5001  
SHEET NO. 1 of 1

UNLESS OTHERWISE SPECIFIED DIMS  
ARE INCHES AND ANGLES ARE DEGREES.

1. 1/63 ALL OVER.

2. NO CHATTER OR NON-UNIFORM

3. PARTS TO BE FREE OF BURRS

4. EXTERNAL THREADS TO BE ROLLED

5. DIAMETERS TO BE CONCENTRIC

WITHIN .003 TIR.

DRAFT WHERE APPLICABLE MUST

REFLECT WITHIN DIMENSIONS

THIS DRAWING CONTAINS INFORMATION THAT IS PROPRIETARY TO MOLEX

INCORPORATED AND SHOULD NOT BE USED WITHOUT WRITTEN PERMISSION.

SIZE