

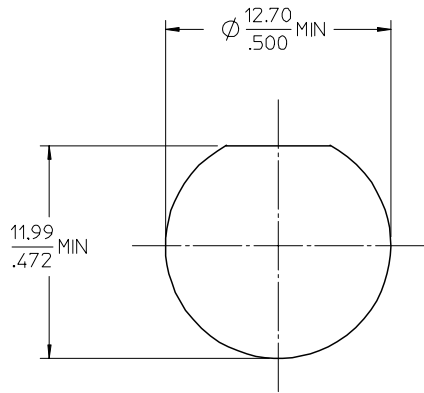
MATERIALS AND FINISHES

BODY, NUT BRASS
PLATED NICKEL

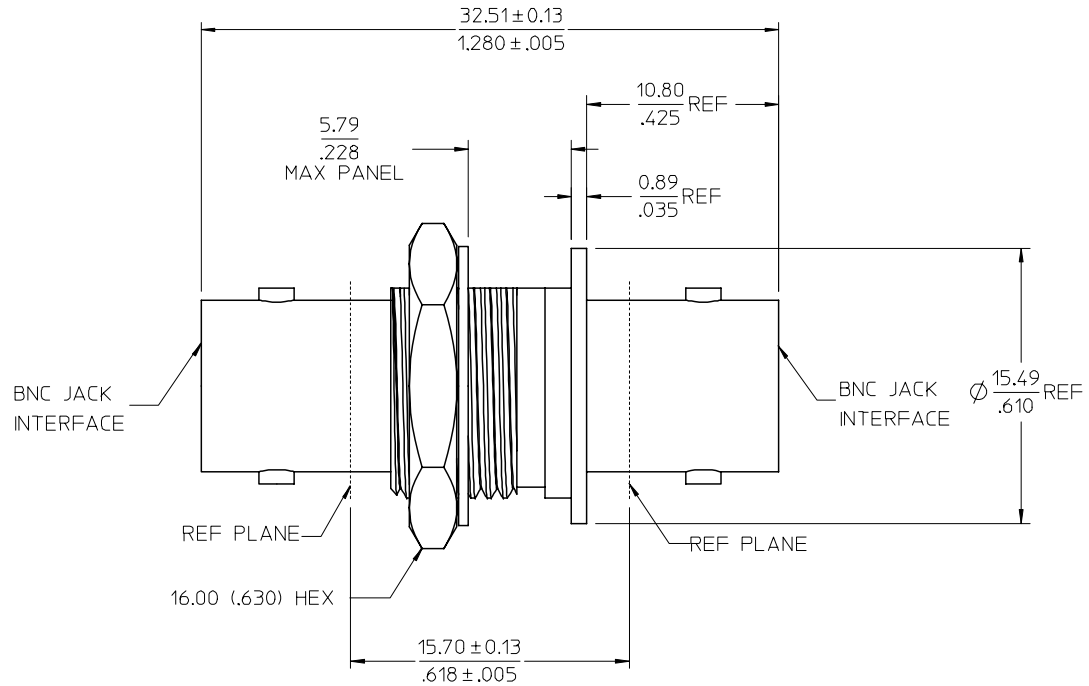
CENTER CONTACT PHOSPHOR BRONZE
PLATED GOLD

INSULATOR TEFLON

LOCKWASHER PHOSPHOR BRONZE
PLATED NICKEL



RECOMMENDED
PANEL CUTOUT



PS-89675-1020	ELECTRO/MECH PERFORM.
MIL-STD-348A, FIG. 301.2	INTERFACE
SPECIFICATION	DESCRIPTION

73171-0343	P/N 73171-0342, ONE PER BAG
73171-0342	BULK
PART NO.	PACKAGING

CHG: REDREW IN SD MM/IN WAS IN/MM ADDED -0343 REMOVED PLATING THICKNESS EC NO: URF2007-0340 DRAWN:SSHAH 2007/02/27 CHKD:FLAHERTY 2007/02/27 APPR:JW ENER 2007/02/27 REV DESCRIPTION	QUALITY SYMBOLS ▽=0 ▽=0	GENERAL TOLERANCES (UNLESS SPECIFIED)		DIMENSION STYLE MM/IN		SCALE	DESIGN UNITS METRIC	THIRD ANGLE PROJECTION			
		4 PLACES	± --- ± ---	mm	INCH	DRAWN BY	DATE	TITLE BNC JACK TO BNC JACK IN-LINE ADAPTER, BLKHD 50 OHMS BNC-AD/JJ/AD			
		3 PLACES	± --- ± ---			CHECKED BY	DATE				
		2 PLACES	± --- ± ---			DHG	1998/01/30	MOLEX MOLEX INCORPORATED			
		1 PLACE	± --- ± ---			APPROVED BY	DATE				
		ANGULAR ± 2 °				GMH	1998/01/30	DOCUMENT NO. SD-73171-034			
		DRAFT WHERE APPLICABLE MUST REMAIN WITHIN DIMENSIONS				MATERIAL NO. SEE TABLE					
		THIS DRAWING CONTAINS INFORMATION THAT IS PROPRIETARY TO MOLEX INCORPORATED AND SHOULD NOT BE USED WITHOUT WRITTEN PERMISSION									