

MATERIALS AND FINISHES

BODY, REAR BODY, COUPLING NUT BRASS  
PLATED GOLD

CENTER CONTACT BRASS  
PLATED GOLD

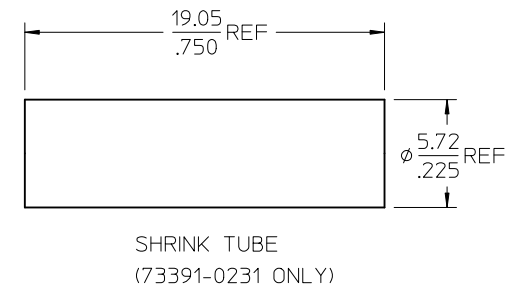
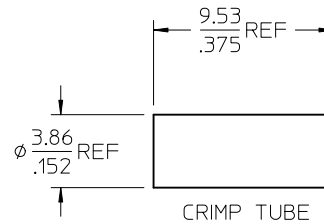
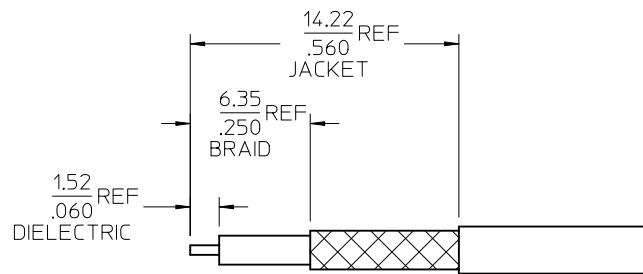
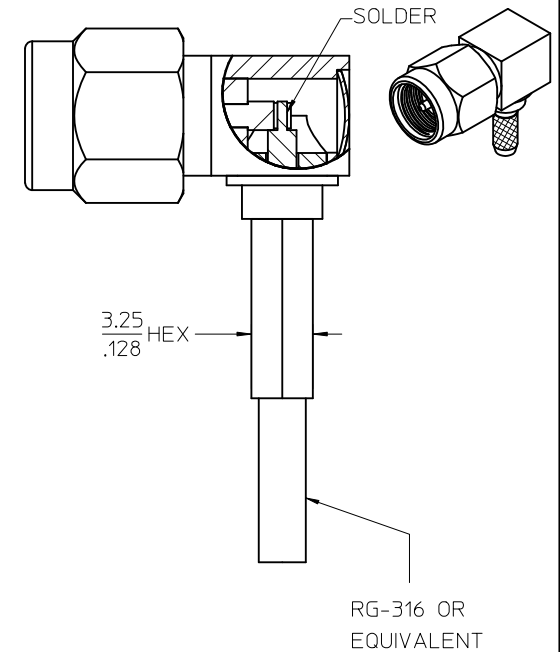
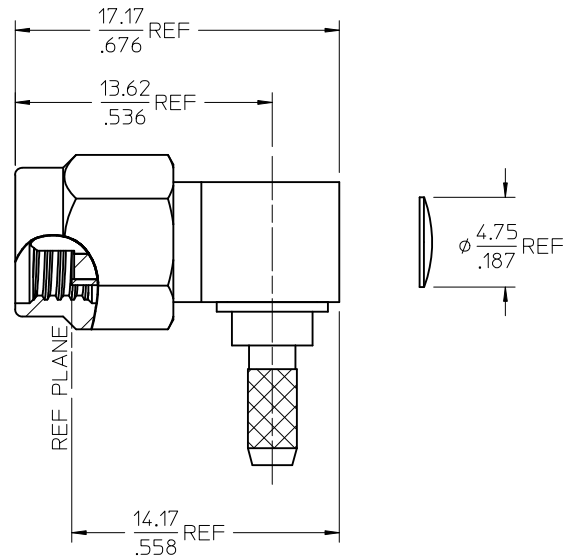
INSULATOR TEFLON

CAP STAINLESS STEEL  
PASSIVATED

C-RING BERYLLIUM COPPER

CRIMP TUBE BRASS  
PLATED SEE TABLE

SHRINK TUBE VERSAFIT



RECOMMENDED CABLE STRIP

73391-0234	NOT INCLUDED	NICKEL	73391-0230 PACKED ONE PER BAG
73391-0233	NOT INCLUDED	GOLD	STANDARD TRAY
73391-0232	NOT INCLUDED	NICKEL	73391-0230 PACKED IN SMALL TRAY (20 CAVITY)
73391-0231	INCLUDED	NICKEL	STANDARD TRAY
73391-0230	NOT INCLUDED	NICKEL	STANDARD TRAY
PART NO.	SHRINK TUBE	CRIMP TUBE	PACKAGING
		PLATING	

PS-89675-3460	ELECTRICAL/MECHANICAL
MIL-STD-348A, FIG. 310-1	INTERFACE
SPECIFICATION	DESCRIPTION

CHG: REVISED CABLE STRIPS. EC NO: URF2011-0642 DRAWN: ROBERTSON 2011/05/02 CHKD: SSS 2011/05/02 APPR: JWIENER 2011/05/03 REV	DESCRIPTION	QUALITY SYMBOLS  ▽=0 ▽=0	GENERAL TOLERANCES (UNLESS SPECIFIED)		DIMENSION STYLE MM/IN		SCALE	DESIGN UNITS METRIC	THIRD ANGLE PROJECTION			
				mm	INCH	DRAWN BY	DATE	TITLE				
			4 PLACES	± ---	± ---	LYNN LIN	2001/01/30	SMA PLUG R/A 50 OHMS FOR RG-316				
			3 PLACES	± ---	± ---	CHECKED BY	DATE	SMA-PC/RA EWR-1765				
			2 PLACES	± ---	± ---	KERRIE	2001/01/30	MOLEX MOLEX INCORPORATED				
			1 PLACE	± ---	± ---	APPROVED BY	DATE	SD-73391-023				
			ANGULAR ± 2 °		MISEN	2001/01/30	SEE TABLE					
			DRAFT WHERE APPLICABLE MUST REMAIN WITHIN DIMENSIONS		MATERIAL NO.		DOCUMENT NO.			SHEET NO.		
					SIZE		THIS DRAWING CONTAINS INFORMATION THAT IS PROPRIETARY TO MOLEX INCORPORATED AND SHOULD NOT BE USED WITHOUT WRITTEN PERMISSION					