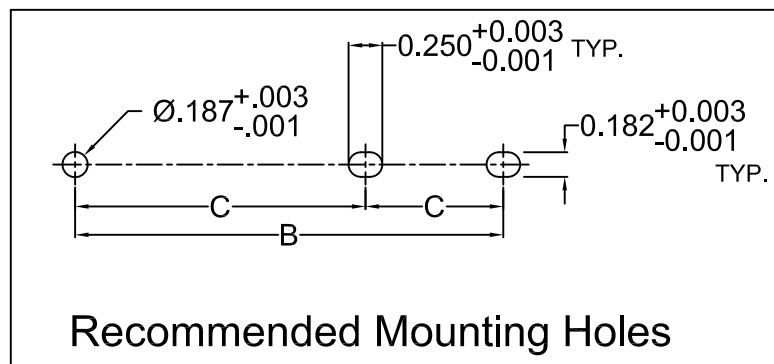
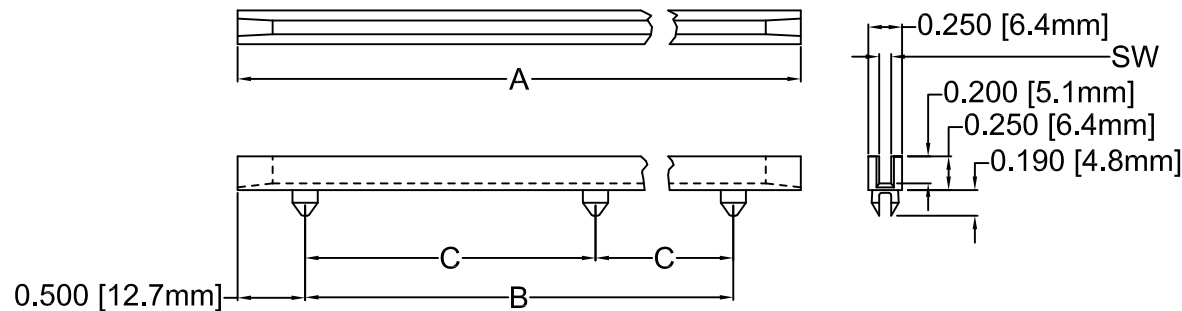

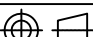


REV.	DESCRIPTION	DATE	APPROVED
B	Engineering Update w/o Changes	02/26/04	M. C.
C	Removed Material Information in Note 2	06/24/11	T. Y.



PART NO.	A ±.062 (1.6)	B ±.032 (.8)	C ±.015 (.4)	S.W. ±.005 (.1)	PCB THICK- NESS	DESC DWG. NO.
DC-250	2.5 (63.5)	1.5 (38.1)	—	—	—	84101-01
DC-450	4.5 (114.3)	3.5 (88.9)	—	—	—	84101-02
DC-600	6.0 (152.4)	5.0 (127.0)	—	.080 (2.0)	1/16 (1.6)	84101-03
DC-800	8.0 (203.2)	7.0 (177.8)	3.5 (88.9)	—	—	84101-04
DC-450-102	4.5 (114.3)	3.5 (88.9)	—	—	—	--
DC-600-102	6.0 (152.4)	5.0 (127.0)	—	.102 (2.6)	3/32 (2.4)	--
DC-800-102	8.0 (203.2)	7.0 (177.8)	3.5 (88.9)	—	—	--
DC-450-130	4.5 (114.3)	3.5 (88.9)	—	—	—	84101-22
DC-600-130	6.0 (152.4)	5.0 (127.0)	—	.132 (3.4)	1/8 (3.2)	84101-23
DC-800-130	8.0 (203.2)	7.0 (177.8)	3.5 (88.9)	—	—	84101-24

2. MATERIAL: NYLON 6, 10% GLASS, 94V-0, BLACK. BIVAR MATERIAL CODE 12-BK.
1. GENERAL SPECIFICATIONS: BIVAR MOLDED COMPONENT SPECIFICATION BV00-E101.

STANDARD TOLERANCE (UNLESS OTHERWISE SPECIFIED)		 4 THOMAS, IRVINE, CA. 92618 TEL: (949) 951-8808 FAX: (949) 951-3974	
<u>DECIMALS</u>	<u>ANGULAR</u>		
.X ±.1	X° ± 1°	 TITLE: DEEP CHANNEL CARD GUIDE	
.XX ±.01			
.XXX ±.005		PART NO: DC-XXX-XXX	
DESIGNED: David Green	DATE: 01/06/03	REVISION: C	
CHECKED: M. Chen	DATE: 01/06/03	CAGE CODE : 32559	SHEET # 1 OF 1
CAD GENERATED DOCUMENT, DO NOT MEASURE DRAWING.			