

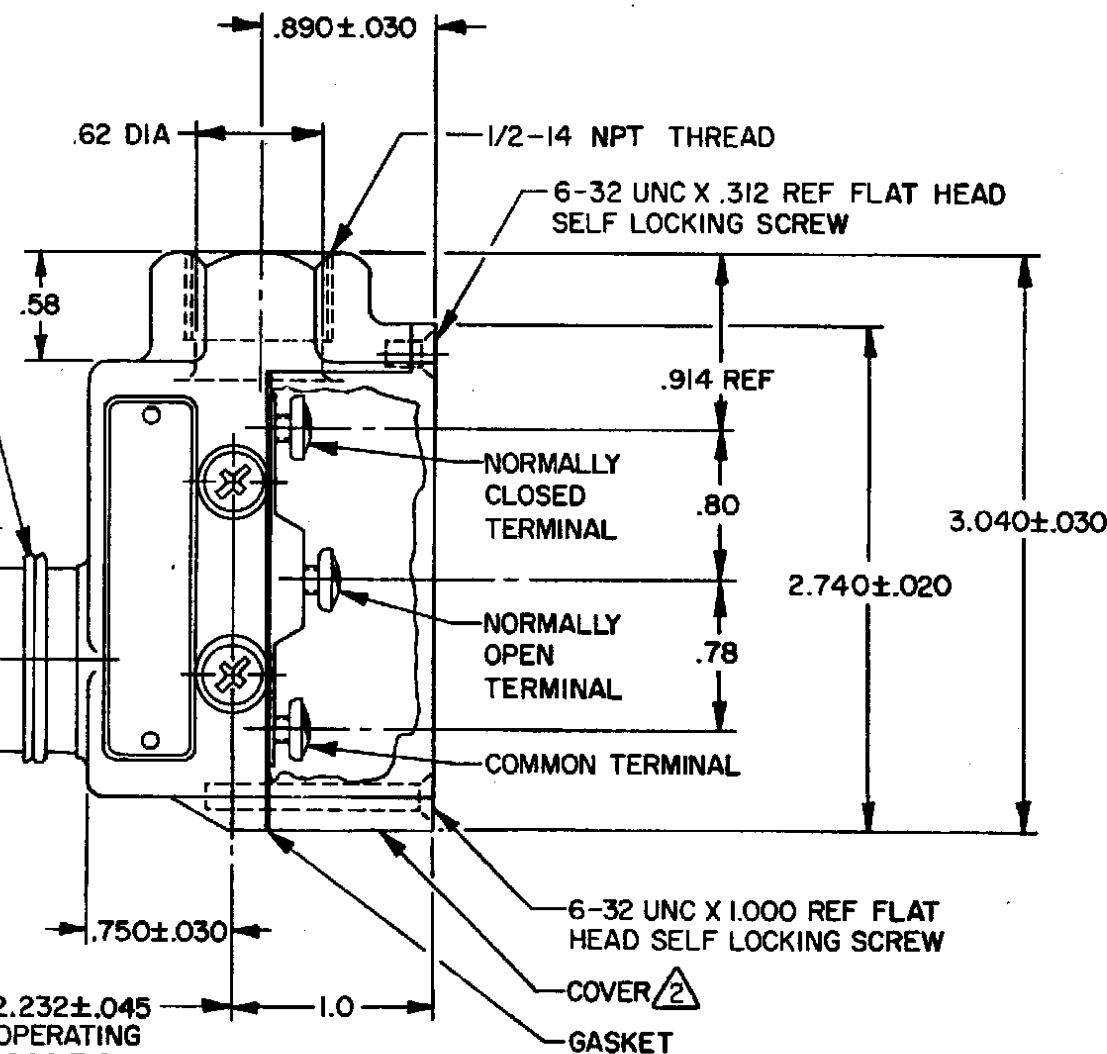
FLAT WASHER (4) Δ

ELASTOMER PLUNGER SEAL SECURED
TO COMPONENTS BY EXTERNAL BANDING

.50 DIA X .19 WIDE CORROSION
RESISTANT STEEL ROLLER

.078 MAX
PRETRAVEL

2.232 \pm .045
OPERATING
POSITION



NOTES -

- 1 - 6-32 UNC X .219 REF BINDING HEAD TERMINAL SCREW AND CUPWASHER (3)
 Δ FURNISHED UNASSEMBLED
 3 - SEAL RATING: NEMA1,3
 IP54

THIS DRAWING COVERS A PROPRIETARY ITEM AND IS THE PROPERTY OF MICRO SWITCH, A DIVISION OF HONEYWELL. THIS DRAWING IS NOT TO BE COPIED OR USED WITHOUT THE APPROVAL OF MICRO SWITCH.

CHARACTERISTICS	ELECTRICAL DATA	SCALE FULL
OPERATING FORCE — 9-24 OZ	CONTACT ARRANGEMENT S P D T	DO NOT SCALE PRINT
RELEASE FORCE — 4 OZ MIN	15A-125, 250 OR 480 VAC, 2A-600 VAC 1/8 HP-125 VAC; 1/4 HP-250 VAC 1/2A-125 VDC; 1/4A-250 VDC CODE L74	UNLESS OTHERWISE NOTED DIMENSIONS ARE IN INCHES
DIFFERENTIAL TRAVEL — .0004-.0020	CE 1.5A, 240Vac	TOLERANCES ARE:
OVERTRAVEL — .219 MIN		ONE PLACE (.0) \pm .030
BASIC SWITCH REPLACEMENT — BZ-2RN785		TWO PLACE (.00) \pm .015
		THREE PLACE (.000) \pm .005
		ANGLES \pm .005
		WEIGHT .56 LB APPROX

REPLACES
BZE6-2RN81
M
DRAWING
NUMBER
10
ISSUE
BP
22NOV05
CHECK
7
REVISIONS
A CO 38200-B
TMM 29 AUG 77
B CO53191F
TSK 13 APR 84
C CO55989
JAP 8 NOV 84
D CO54958
GJW 8 JAN 85
E CO72476
MAM 4 SEP 92
F CO-77179A
KDR 17 FEB 94
G 0017057
VKR 22NOV05
DRAWN
TMM 29 AUG 77
CHECK
K P
31 AUG 77
FO-2R11-A