

F

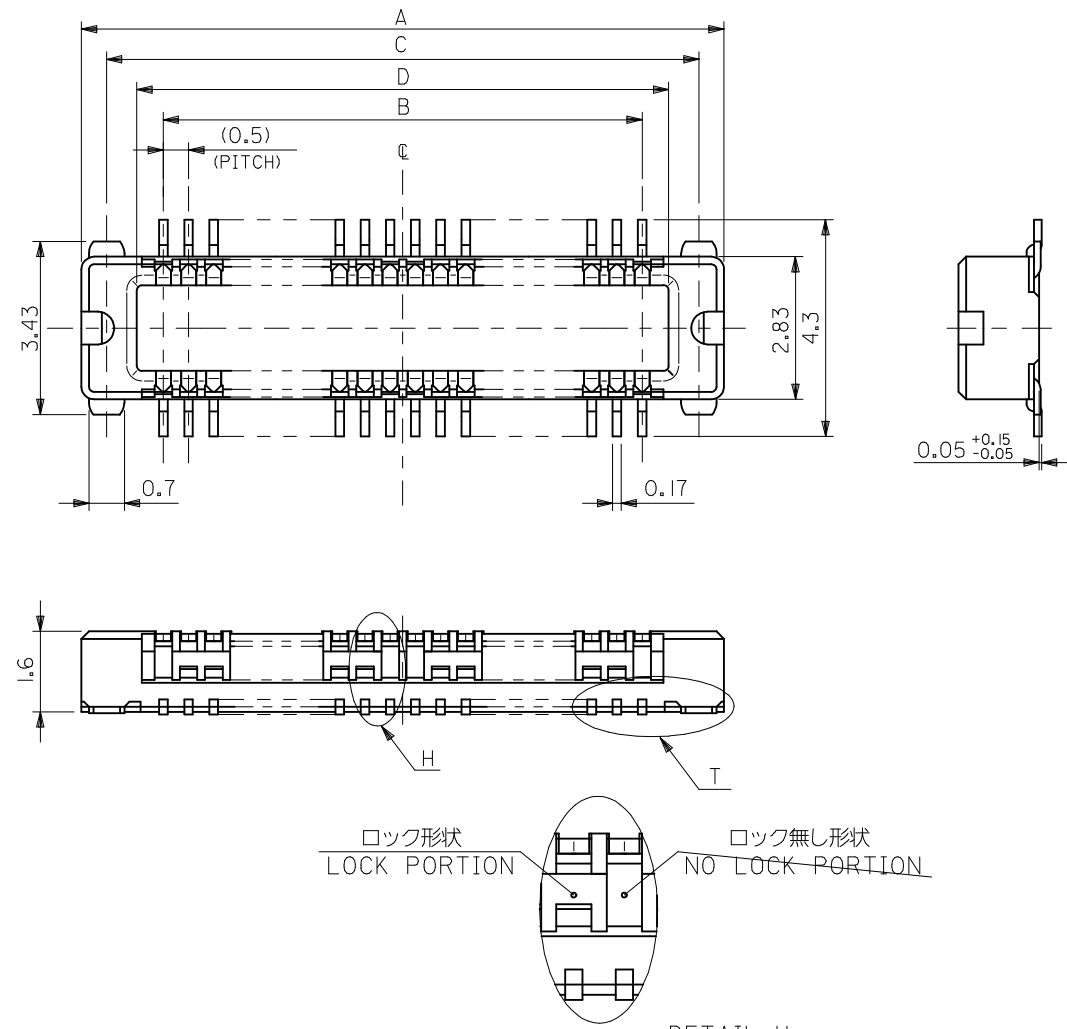
E

D

C

B

A



注記
NOTES:

1. 材質
MATERIAL
ハウジング: LCP (液晶ポリマー)、ガラス充填、黒色、UL94V-0
HOUSING: LCP (LIQUID CRYSTAL POLYMER), GLASS FILLED, BLACK, UL94V-0
ターミナル: 銅合金 (t=0.15)
TERMINAL: COPPER ALLOY (t=0.15)
ネイル: 銅合金 (t=0.2)
NAIL: COPPER ALLOY (t=0.2)
2. メッキ仕様
PLATING
ターミナル
TERMINAL
接点部: 金メッキ 0.25マイクロメートル以上。
CONTACT AREA: GOLD 0.25 MICROMETER MINIMUM.
半田付け部: 金メッキ 0.4マイクロメートル以下。
SOLDER TAIL AREA: GOLD 0.4 MICROMETER MAXIMUM.
下地メッキ: ニッケルメッキ 1.5マイクロメートル以上。
UNDER PLATING: NICKEL 1.5 MICROMETER MINIMUM.
ネイル
NAIL
錫メッキ 3.0マイクロメートル以上
Sn 3.0 MICROMETER MINIMUM.
下地メッキ: ニッケルメッキ 1.0マイクロメートル以上。
UNDER PLATING: NI 1.0 MICROMETER MINIMUM.
3. テール平坦度は、0.08ミリメートル以下。テールとネイルを併せた平坦度は、0.1ミリメートル以下。
TAIL COPLANARITY TO BE 0.08 MAXIMUM. TAILS AND NAILS COPLANARITY TO BE 0.1 MAXIMUM.
4. 嵌合相手: 54363-****
MATED CONN.: 54363-****
5. この製品は55201-***01, 〈エンボス梱包品 55201-***08〉の鉛フリー品です。
THIS PRODUCT IS 'LEAD FREE' OF 55201-***01, (EMBOSSED TAPE PKG 55201-***08)

—#—	35.55	36.75	34.5	37.75	55201-1478	55201-1471	140
—#—	30.55	31.75	29.5	32.75	55201-1278	55201-1271	120
—#—	20.55	21.75	19.5	22.75	55201-0878	55201-0871	80
12	13.05	14.25	12	15.25	55201-0578	55201-0571	50
20	10.55	11.75	9.5	12.75	55201-0478	55201-0471	40
30	8.05	9.25	7	10.25	55201-0378	55201-0371	30
20	5.55	6.75	4.5	7.75	55201-0278	55201-0271	20
□ツク数 LOCKS	D	C	B	A	エンボス梱包品 EMBOSSED TAPE PACKAGING	製品番号 MATERIAL NO.	極数 CIRCUITS

DETAIL H
SCALE 20:1

REVISED
EC NO: J2009-0259
DRWN: YOSHIDA 2008/08/07
CHKD: THARUYAMA 2008/08/07
APPR: NUKITA 2008/12/17

DESCRIPTION

REV

GENERAL TOLERANCES
(UNLESS SPECIFIED)

10 UNDER ±0.2
10 OVER 30 UNDER ±0.25
30 OVER ±0.3
ANGULAR ±3 °
DRAFT WHERE APPLICABLE
MUST REMAIN
WITHIN DIMENSIONS

DIMENSION STYLE
MM ONLY

DRAWN BY
A. IIDA
CHECKED BY
H. TAKASE
APPROVED BY
J. MIYAZAWA
MATERIAL NO.

DATE
'04/01/06
'04/01/06
'04/01/06

SCALE
10:1

DESIGN UNITS
METRIC

THIRD ANGLE
PROJECTION

0.5 B/B PLUG ASSY (H=2MM)
WITH FITTING NAIL
-LEAD FREE-

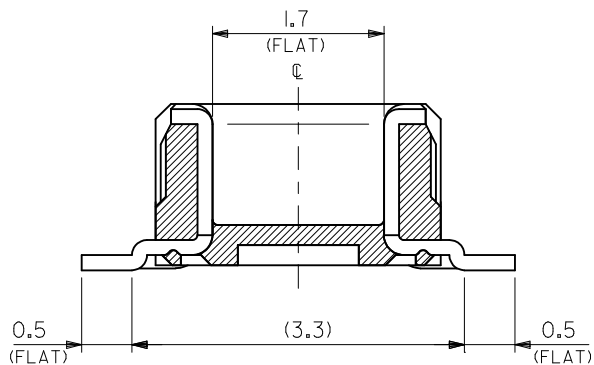
MOLEX INCORPORATED

DOCUMENT NO.
SD-55201-013

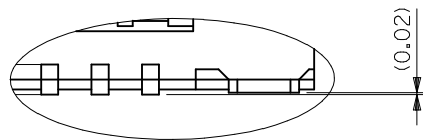
SHEET NO.
1 OF 2

SIZE
A3

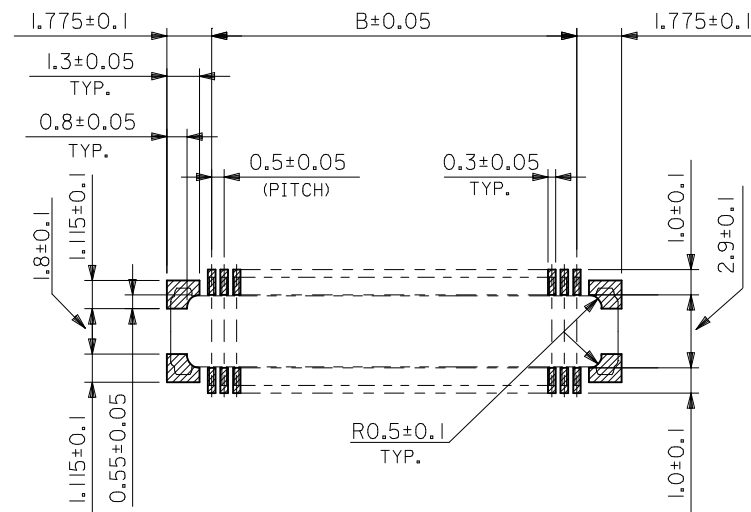
THIS DRAWING CONTAINS INFORMATION THAT IS PROPRIETARY TO MOLEX
INCORPORATED AND SHOULD NOT BE USED WITHOUT WRITTEN PERMISSION



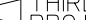
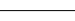
製品断面図 (半田付け部、吸着面寸法)
DETAIL FOR SOLDERING AND VACUUM AREA



寸法詳細
DETAIL T



推奨基板寸法
RECOMMENDED PCB PATTERN LAYOUT
(SCALE:5-1)

REVISED EC NO.: J2009-0259 DRWN: YOSHIDA 2008/08/07 CHKD: THARUYAMA 2008/08/07 APPR: NUKITA 2008/12/17	DESCRIPTION	GENERAL TOLERANCES (UNLESS SPECIFIED)		DIMENSION STYLE MM ONLY		SCALE 20:1	DESIGN UNITS METRIC	 THIRD ANGLE PROJECTION
		10 UNDER	± 0.2	DRAWN BY A. IDA	DATE '04/01/06	TITLE 0.5 B/B PLUG ASSY(H=2MM) WITH FITTING NAIL -LEAD FREE-		
		10 OVER 30 UNDER	± 0.25	CHECKED BY H. TAKASE	DATE '04/01/06			
		30 OVER	± 0.3	APPROVED BY J. MIYAZAWA	DATE '04/01/06	 MOLEX INCORPORATED		
		ANGULAR ±3 °		MATERIAL NO.				
	DRAFT WHERE APPLICABLE MUST REMAIN WITHIN DIMENSIONS		SEE TABLE		SD-55201-013		2 OF 2	
	B	REV	THIS DRAWING CONTAINS INFORMATION THAT IS PROPRIETARY TO MOLEX INCORPORATED AND SHOULD NOT BE USED WITHOUT WRITTEN PERMISSION					

10

9

8

7

6

5

4

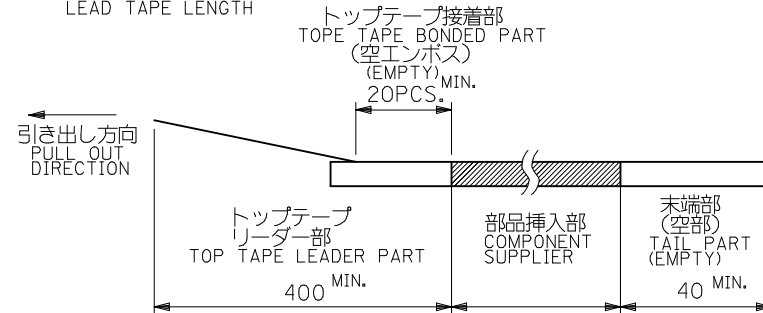
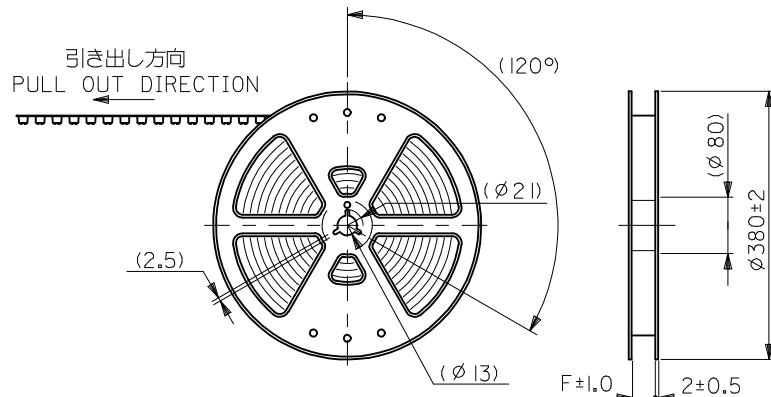
3

2

1

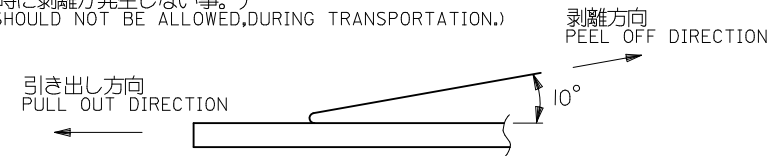
注)
NOTES

- 製品番号 55201-**71 詳細寸法については、製品単体図面を参照下さい。
IN THE PACKAGE PART NUMBER 55201-**71 DETAILED DIMENSIONS,
SEE SALES DRAWING FOR CONNECTOR.
- 梱包数量: 2500個/リール
NUMBER OF CONNECTORS: 2500 PCS/REEL.
- リードテープ長さ
LEAD TAPE LENGTH



- トップテープの剥離強度: (剥離方向は下図参照)
PEELING OFF FORCE OF TOP TAPE (PELLING DIRECTION AS SHOWN IN FOLLOWING FIGURE.)
0. 1~1. 3N (10~130gf)

尚、本規格値は、出荷時に適用。
THIS REQUIREMENT SHOULD BE APPLIED AT SHIPMENT.
(但し、輸送時に剥離が発生しない事。)
(PEEL OFF SHOULD NOT BE ALLOWED, DURING TRANSPORTATION.)



- 材料
MATERIAL
キャリアテープ: ポリプロピレン (PP)
CARRIER TAPE: POLYPROPYLENE (PP)
トップテープ: PET, PE, PEF
TOP TAPE: PET, PE, PEF
リール: ポリスチレン
REEL: POLYSTYRENE

- この製品は 55201-**01, 〈エンボス梱包品 55201-**08〉の鉛フリー品です。
THIS PRODUCT IS 'LEAD FREE' OF 55201-**01, (EMBOSS TAPE PKG 55201-**08)

REVISED EC NO: J2009-0259 DRWN:YOSHIDAM CHKD:THARUYAWA APPR:NUKITA	DESCRIPTION 2008/08/07 2008/08/07 2008/12/17	GENERAL TOLERANCES (UNLESS SPECIFIED)		DIMENSION STYLE MM ONLY		SCALE ---	DESIGN UNITS METRIC	THIRD ANGLE PROJECTION		
		10 UNDER	± 0.2	DRAWN BY A. IDA	DATE '04/01/06	TITLE 55201-**71 TAPING PACKAGE -LEAD FREE-				
		10 OVER 30 UNDER	± 0.25	CHECKED BY H. TAKASE	DATE '04/01/06					
		30 OVER	± 0.3	APPROVED BY J. MIYAZAWA	DATE '04/01/06	MOLEX INCORPORATED				
		ANGULAR ±3 °		MATERIAL NO. SEE TABLE						
		DRAFT WHERE APPLICABLE MUST REMAIN WITHIN DIMENSIONS		THIS DRAWING CONTAINS INFORMATION THAT IS PROPRIETARY TO MOLEX INCORPORATED AND SHOULD NOT BE USED WITHOUT WRITTEN PERMISSION						
	REV									

9

8

7

6

5

4

3

2

10 9 8 7 6 5 4 3 2 1

F

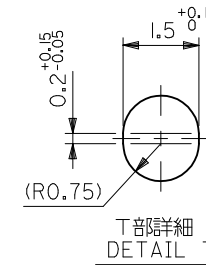
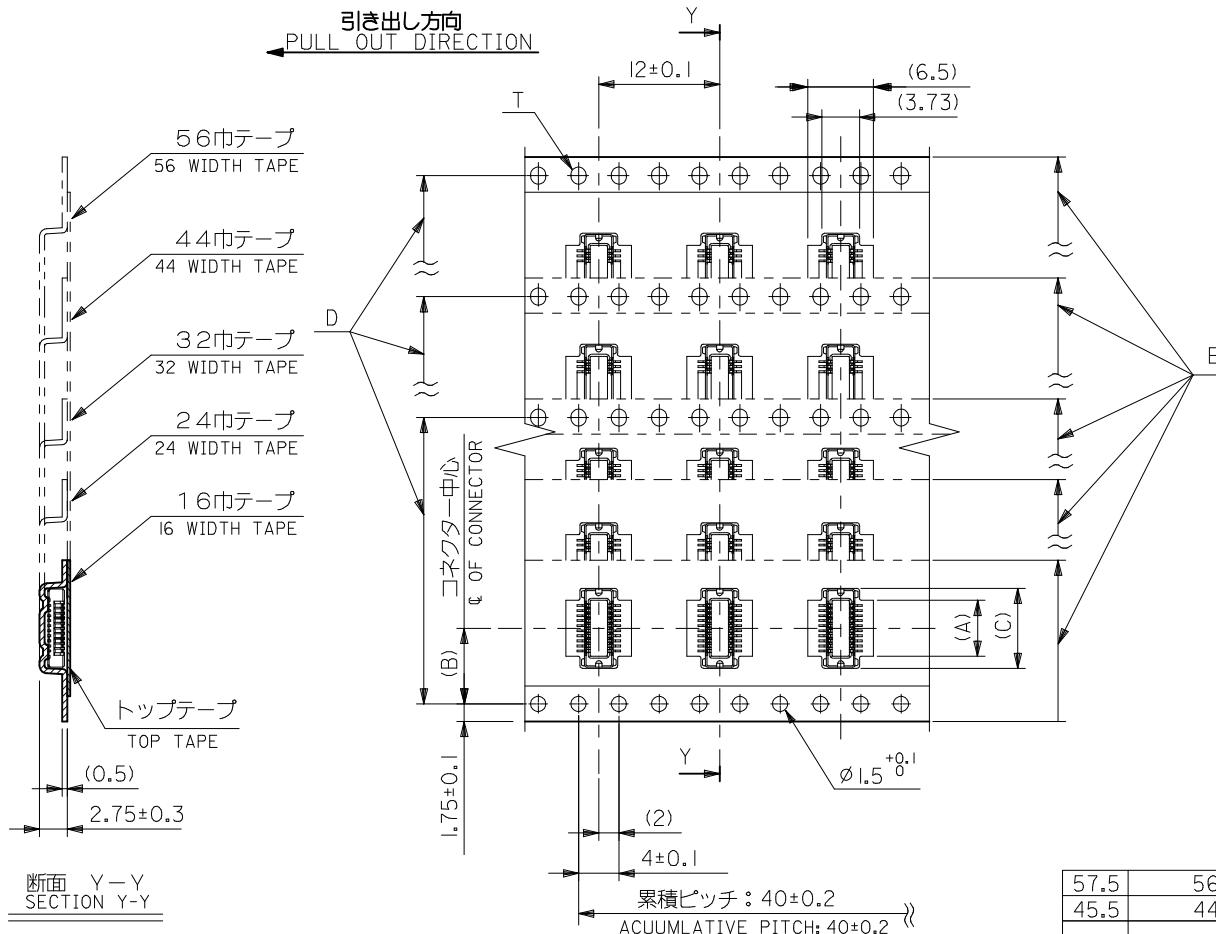
E

D

C

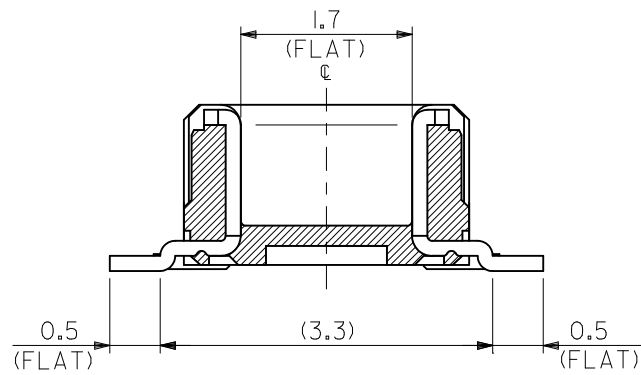
B

A

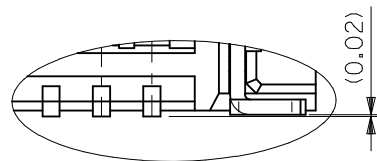


57.5	56±0.3	52.4	32.95	26.2	30.55	55201-1278	120
45.5	44±0.3	40.4	22.95	20.2	20.55	55201-0878	80
25.5	24±0.3	—#—	15.45	11.5	13.05	55201-0578	50
			12.95		10.55	55201-0478	40
			10.45		8.05	55201-0378	30
17.5	16±0.3	—#—	7.95	7.5	5.55	55201-0278	20
F	E キャリアテープ幅 CARRIER TAPE WIDTH	D	(C)	(B)	(A)	製品番号 MATERIAL NO.	極数 CIRCUITS

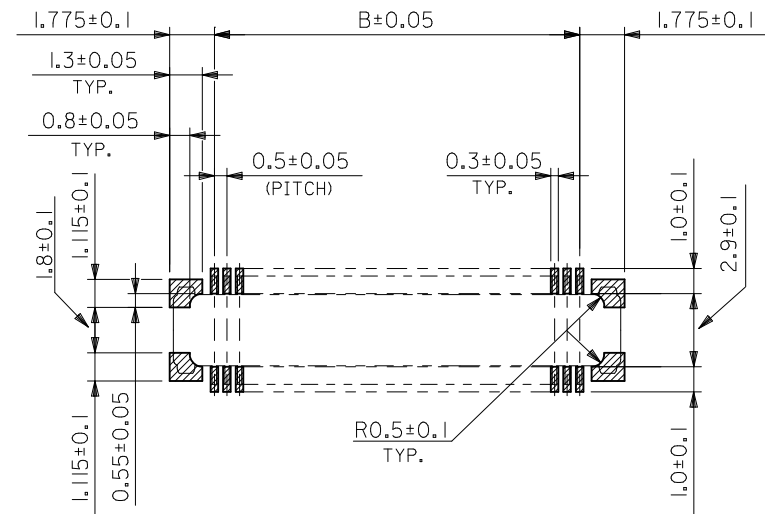
REVISED EC NO: J2009-0259 DRWN: YOSHIDA CHKD: THARUYAMA APPR: NUKITA	DESCRIPTION	GENERAL TOLERANCES (UNLESS SPECIFIED)		DIMENSION STYLE MM ONLY		SCALE ---	DESIGN UNITS METRIC	THIRD ANGLE PROJECTION		
		10 UNDER	± 0.2	DRAWN BY A. IDA	DATE '04/01/06	TITLE 55201-**71 TAPING PACKAGE -LEAD FREE-				
		10 OVER 30 UNDER	± 0.25	CHECKED BY H. TAKASE	DATE '04/01/06					
		30 OVER	± 0.3	APPROVED BY J. MIYAZAWA	DATE '04/01/06	MOLEX INCORPORATED				
		ANGULAR ±3 °		MATERIAL NO.						
		DRAFT WHERE APPLICABLE MUST REMAIN WITHIN DIMENSIONS		SEE TABLE		SD-55201-014		2 OF 2		
	REV	THIS DRAWING CONTAINS INFORMATION THAT IS PROPRIETARY TO MOLEX INCORPORATED AND SHOULD NOT BE USED WITHOUT WRITTEN PERMISSION								




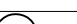
製品断面図 (半田付け部、吸着面寸法)
DETAIL FOR SOLDERING AND VACUUM AREA



DETAIL T
T部詳細



推奨基板寸法
RECOMMENDED PCB PATTERN LAYOUT
(SCALE:5-1)

REVISED EC NO: J2011-0841 DRWN:KTOYODA CHKD: APPR:MSASAO REV 0	DESCRIPTION 2010/12/16 2011/02/15	GENERAL TOLERANCES (UNLESS SPECIFIED)		DIMENSION STYLE MM ONLY		SCALE 1:1	DESIGN UNITS METRIC	 THIRD ANGLE PROJECTION	
		10 UNDER	± 0.2	DRAWN BY KTOYODA	DATE 2010/12/16	TITLE 0.5 B/B PLUG ASSY WITH FITTING NAIL			
		10 OVER 30 UNDER	± 0.25	CHECKED BY	DATE				
		30 OVER	± 0.3	APPROVED BY MSASAO	DATE 2011/02/15	 MOLEX INCORPORATED			
		ANGULAR ±1 °		MATERIAL NO.					DOCUMENT NO.
	DRAFT WHERE APPLICABLE MUST REMAIN WITHIN DIMENSIONS		SEE TABLE		SD-55201-015		2 OF 2		
		SIZE A3	THIS DRAWING CONTAINS INFORMATION THAT IS PROPRIETARY TO MOLEX INCORPORATED AND SHOULD NOT BE USED WITHOUT WRITTEN PERMISSION						