

Aug.1.2016 Copyright 2016 HIROSE ELECTRIC CO., LTD. All Rights Reserved.

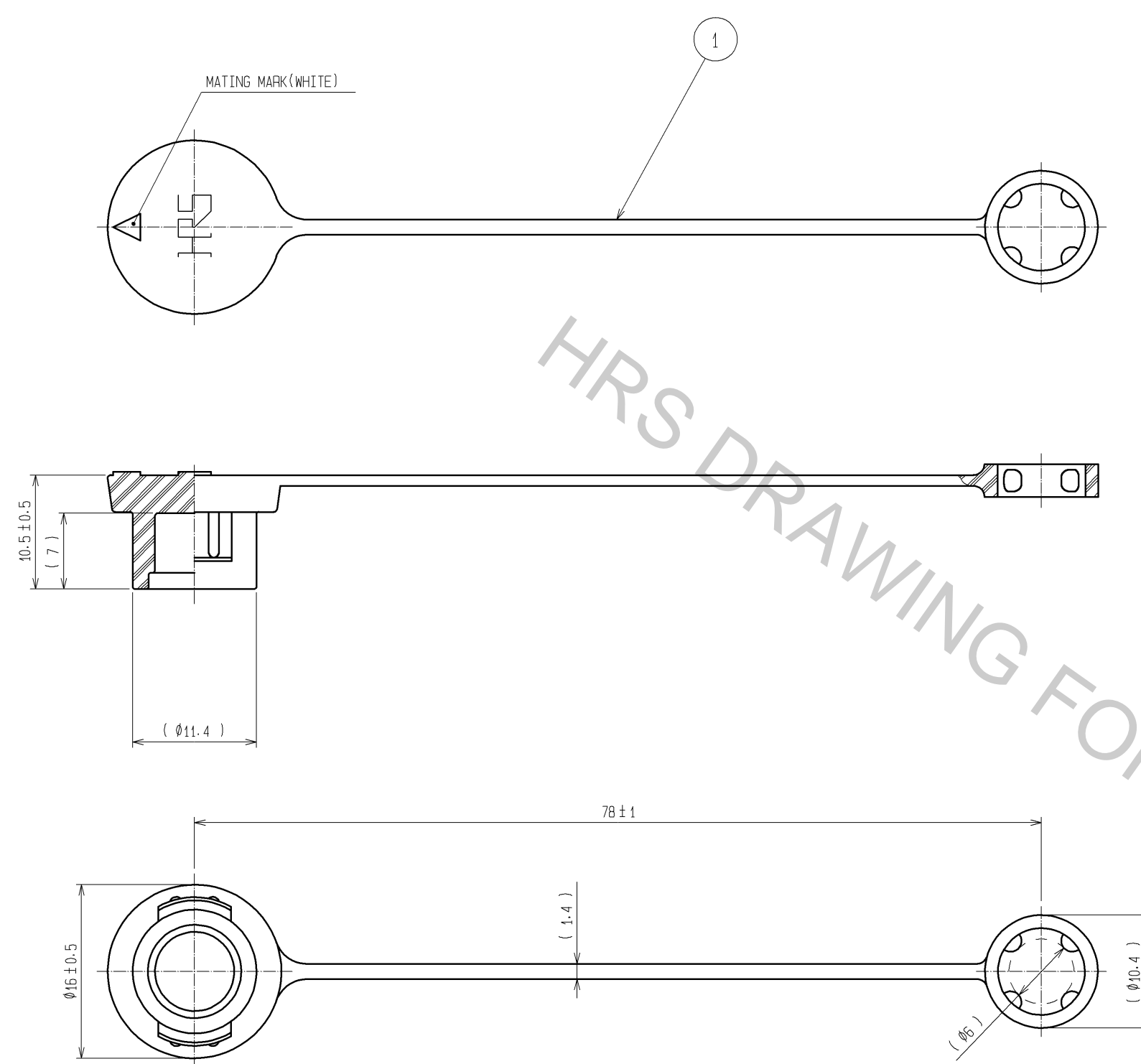
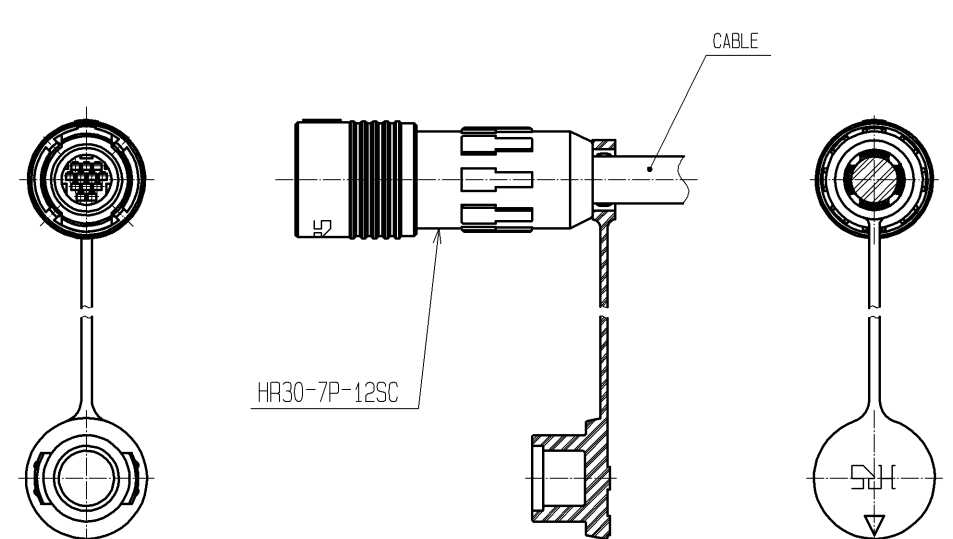
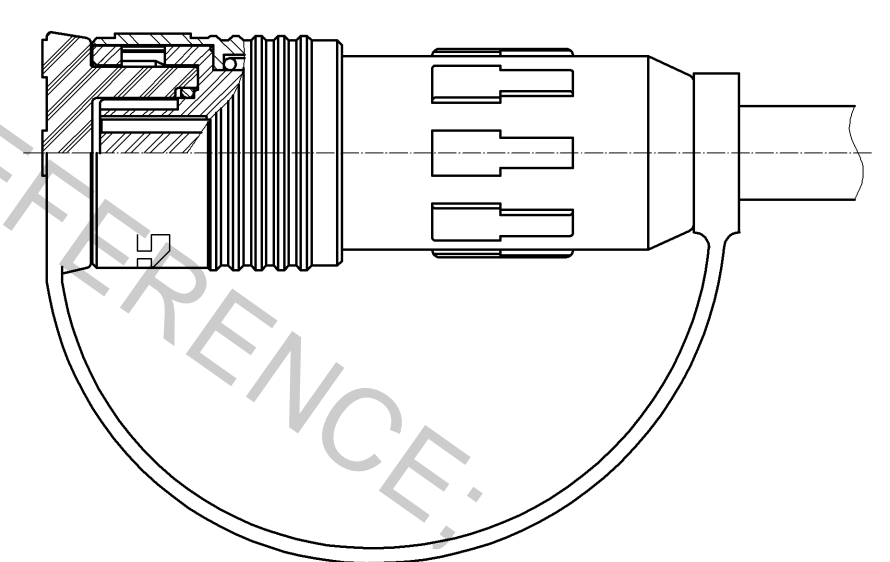


DIAGRAM AFTER ASSEMBLING

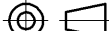



INSTALLATION VIEW(1:1)



MATING CONDITION VIEW



NOTES 1 THIS PART TO BE USED AS ASSEMBLED COMPONENT IN THE DIAGRAM AFTER ASEMBLING.
2 THIS PRODUCT IS A CAP FOR HR30-7P-*(※).
IT IS APPLICABLE REGARDLESS OF GIVEN ALPHABETS OR NUMBERS SHOWN AT ※.

1	▲CHLOROPRENE RUBBER	BLACK						
NO.	MATERIAL	FINISH , REMARKS			NO.	MATERIAL	FINISH , REMARKS	
UNITS mm		SCALE 2 : 1		COUNT 2	DESCRIPTION OF REVISIONS DIS-C-002963	DESIGNED MM. ISHII	CHECKED TP. KOMATSU	DATE 13. 04. 04
 HIROSE ELECTRIC CO., LTD.		APPROVED : MO. SATOH			05. 10. 20	DRAWING NO. EDC3-112698-71		
		CHECKED : MO. SATOH			05. 10. 20	PART NO. HR30-7P-C(71)		
		DESIGNED : EJ. KUNII			05. 10. 20	CODE NO. CL130-3004-8-71		
		DRAWN : EJ. KUNII			05. 10. 20	 1 