

MICRO SWITCH
FREEPORT, ILLINOIS, U.S.A.
A DIVISION OF HONEYWELL
FED. MFG. CODE 91929

SWITCH - ENCLOSED

CATALOG LISTING
BZE6-2RQ

BZE6-2RQ

M

DRAWING
NUMBER

10

ISSUE

REPLACES

RELEASE NO.

PSR 29AUG07

CHECK

REVISIONS

A	0038200	29 AUG 77
B	0053191-G	2 SEP 77
C	0055989	6 NOV 84
D	0054958	11 MAR 85
E	0072618	11 SEP 92
F	0016894	10 NOV 05
G	0033014	29 AUG 07

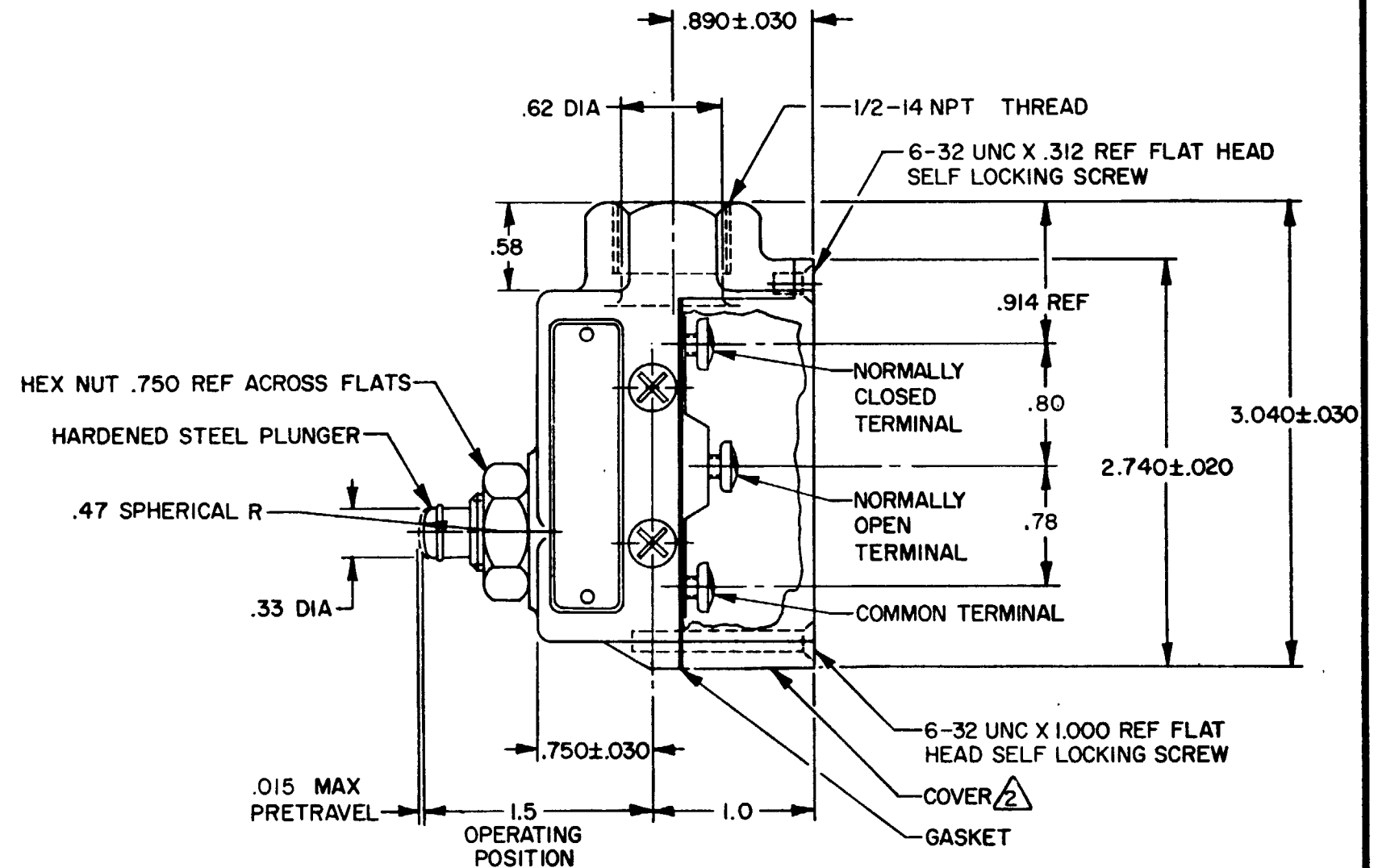
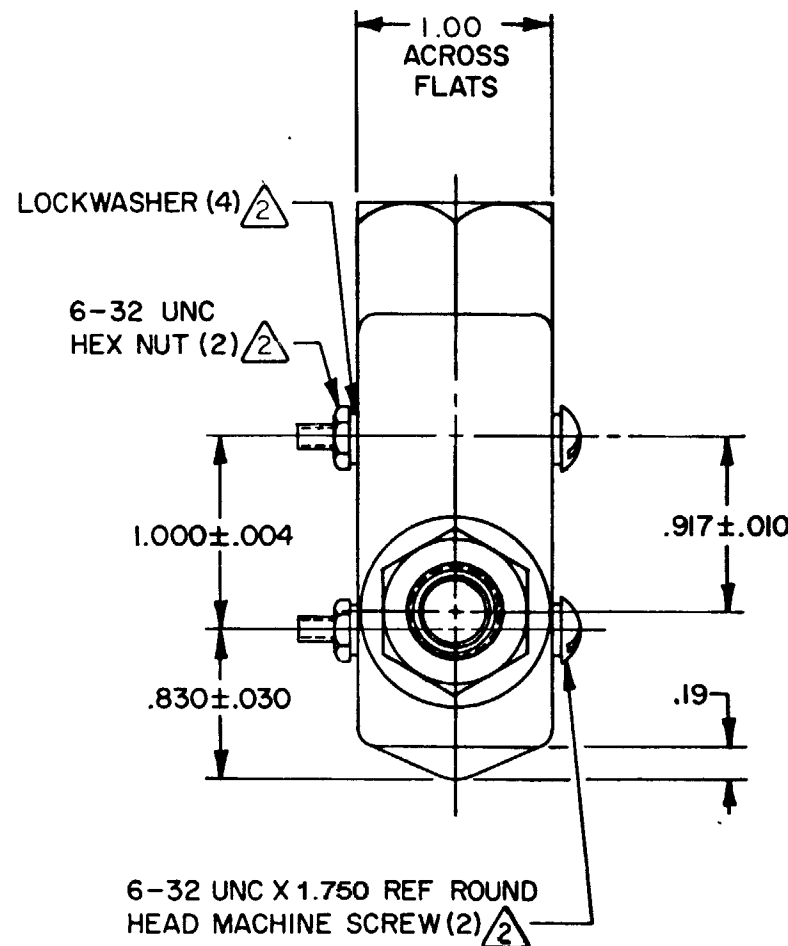
KPK 2 SEP 77

CHECK

29 AUG 77

RASTER
FO-82851-A

DRAWN



NOTES -

- 1 - 6-32 UNC X .219 REF BINDING HEAD TERMINAL SCREW AND CUPWASHER (3)
- 2 - FURNISHED UNASSEMBLED
- 3 - SEAL RATING: NEMA1
IP40

THIS DRAWING COVERS A PROPRIETARY ITEM AND IS THE PROPERTY OF MICRO SWITCH, A DIVISION OF HONEYWELL. THIS DRAWING IS NOT TO BE COPIED OR USED WITHOUT THE APPROVAL OF MICRO SWITCH.

CHARACTERISTICS	ELECTRICAL DATA	SCALE FULL
OPERATING FORCE ----- 9-13 OZ	CONTACT ARRANGEMENT S P D T	DO NOT SCALE PRINT
RELEASE FORCE ----- 4 OZ MIN	15A-125, 250 OR 480 VAC, 2A-600 VAC 1/8 HP-125 VAC; 1/4 HP-250 VAC 1/2A-125 VDC; 1/4A-250 VDC CODE L74	UNLESS OTHERWISE NOTED DIMENSIONS ARE IN INCHES
DIFFERENTIAL TRAVEL ----- .002 MAX	CE 1.5A, 240 Vac	TOLERANCES ARE:
OVERTRAVEL ----- .219 MIN		ONE PLACE (.0) .030
BASIC SWITCH REPLACEMENT ----- BZ-2RQ66		TWO PLACE (.00) .015
		THREE PLACE (.000) .005
		ANGLES
		WEIGHT .53 LB