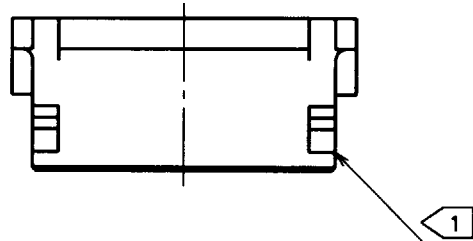
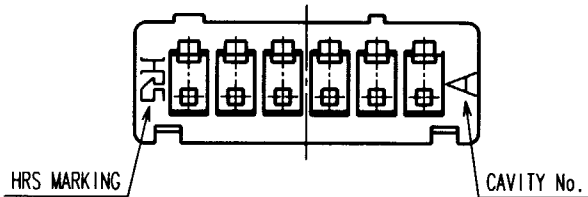
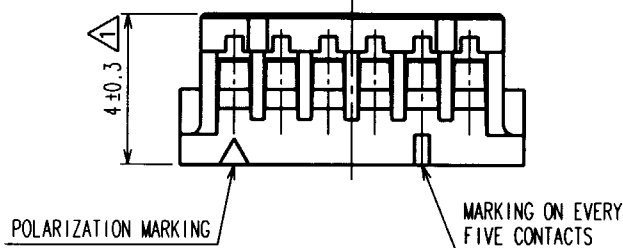
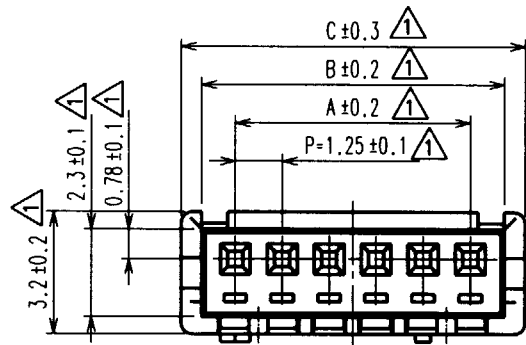


Oct.1.2018 Copyright 2018 HIROSE ELECTRIC CO., LTD. All Rights Reserved.
In case that the application demands a high level of reliability, such as automotive,
please contact a company representative for further information.

	COUNT	DESCRIPTION OF REVISIONS	BY	CHKD	DATE		COUNT	DESCRIPTION OF REVISIONS	BY	CHKD	DATE
△	10	RE-H-03529	I.Y	C.H	20.05.30	△					
△						△					
△						△					



CODE No.	NUMBER OF CONTACTS	A	B	C
CL536-0001-4	2	1.25	3.05	4.15
CL536-0002-7	3	2.50	4.30	5.40
CL536-0003-0	4	3.75	5.55	6.65
CL536-0004-2	5	5.00	6.80	7.90
CL536-0005-5	6	6.25	8.05	9.15
CL536-0006-8	7	7.50	9.30	10.40
CL536-0007-0	8	8.75	10.55	11.65
CL536-0008-3	9	10.00	11.80	12.90
CL536-0009-6	10	11.25	13.05	14.15
CL536-0010-5	11	12.50	14.30	15.40
CL536-0011-8	12	13.75	15.55	16.65
CL536-0012-0	13	15.00	16.80	17.90
CL536-0013-3	14	16.25	18.05	19.15
CL536-0014-6	15	17.50	19.30	20.40

NOTE 1: WHEN THIS CONNECTOR HAS TWO OR THREE CONTACTS,
THE LOCK SHALL BE SET AT THE CENTER OF HOUSING.
IF MORE THAN FOUR, THE TWO LOCKS SHALL BE SET
AS SHOWN ON THIS DRAWING.

		1	POLYAMIDE	BEIGE,UL94V-0		
NO.	MATERIAL	FINISH, REMARKS		NO.	MATERIAL	FINISH, REMARKS
CODE NO.(OLD)		DRAWN	DESIGNED	CHECKED	APPROVED	RELEASED
		T.Goi	I.Tashiro	K.Akiyama	M.Yamamoto	
		'94. 4.16	'94. 4.19	'94. 4.25	'94. 4.25	
DRAWING NO.		PART NO.				
EDC3-083675		DF13-*S-1.25C				
SCALE		CODE NO.				
5 : 1		CL536-				
UNITS						
mm						