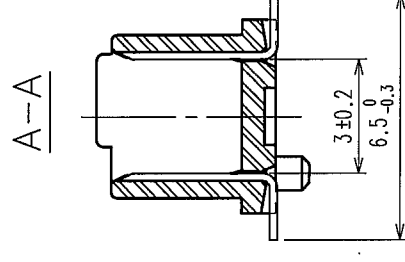
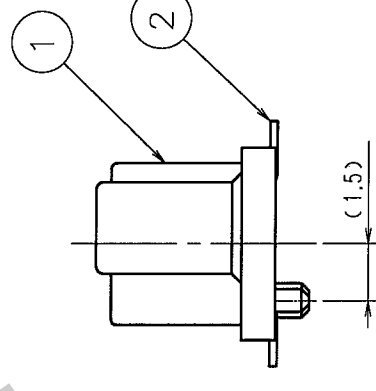
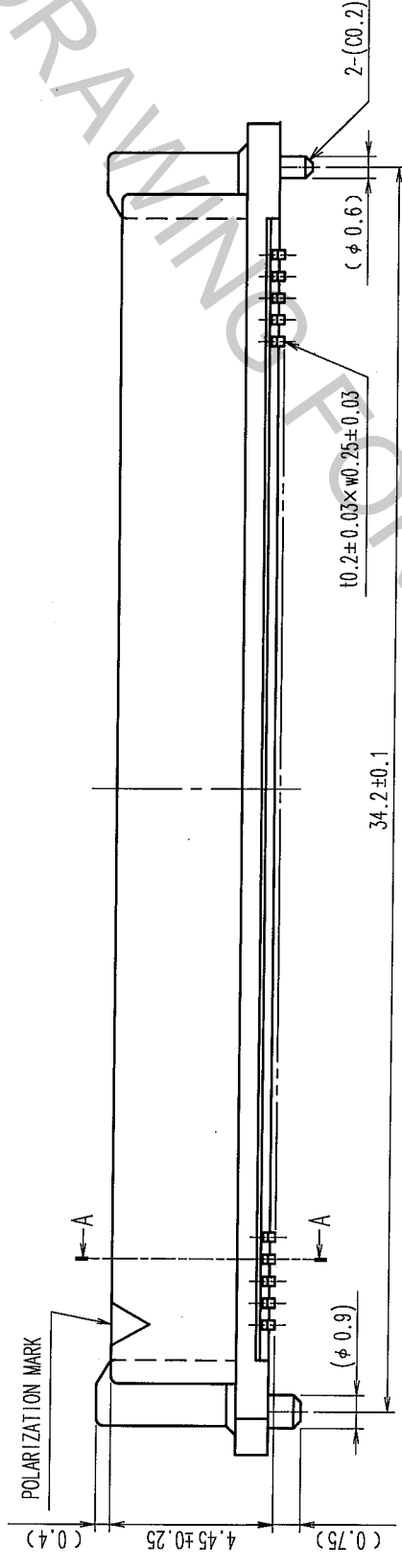
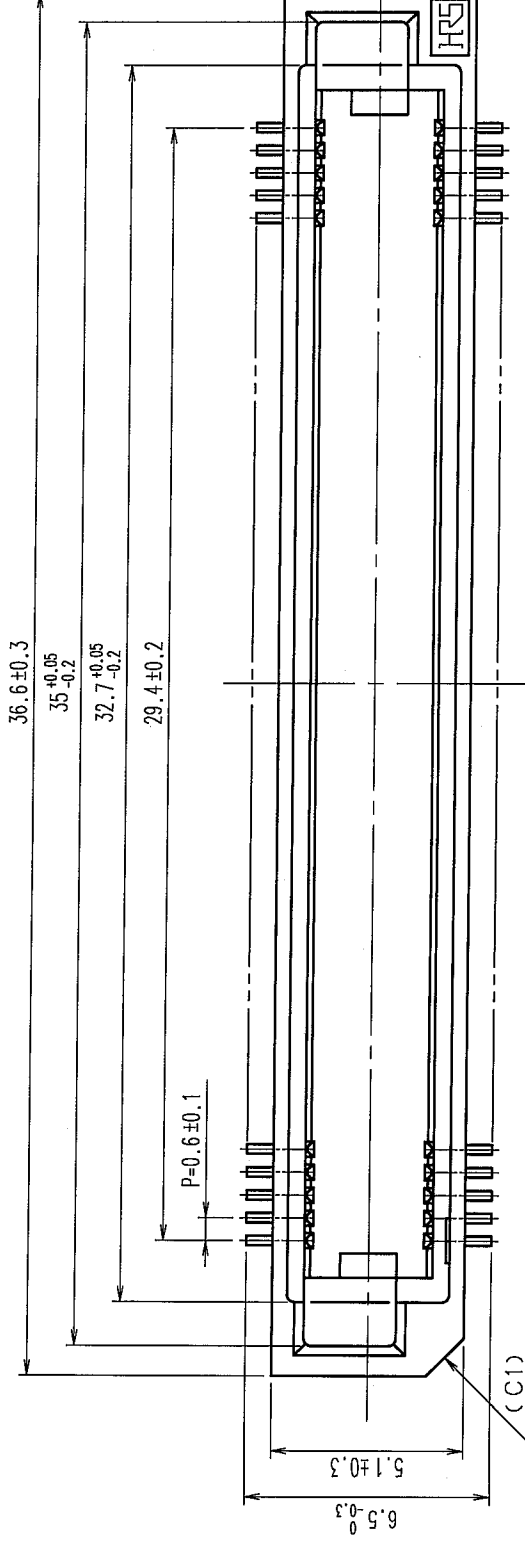


In case that the application demands a high level of reliability, such as automotive, please contact a company representative for further information. OF REV

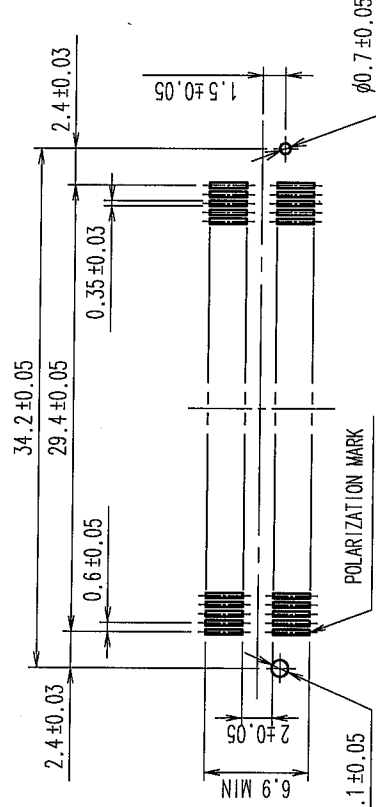
For information on reliability, such as automotive,					
	COUNT	DESCRIPTION OF REVISIONS	BY	CHKD	DATE
✓					.
✓	△				.
✓					.
✓	△				.
✓					.




NOTE.

- 1.LEAD CO-PLANARITY SHALL BE 0.1mm MAX.
- 2.TUBE PACKAGING SHALL BE APPLIED FOR THIS PRODUCT.
SEE NEXT PAGE FOR DETAILS.
- 3.FOR MODIFICATION, ETC., PREVENTIVE HOLE FOR SINK MARK SHALL BE 0.1mm MAX.
- 4.THE DIMENSIONS IN PARENTHESES ARE FOR REFERENCE.

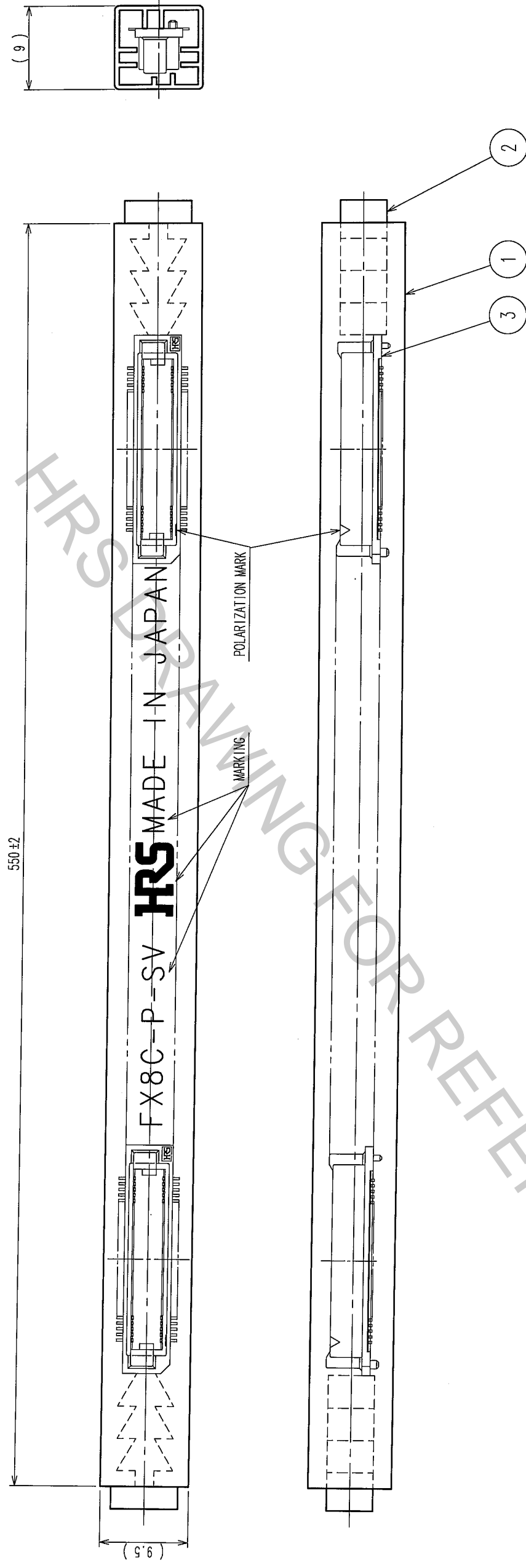
RECOMMENDED LAND PATTERN DIMENSION OF PCB (MOUNTING SIDE) (2:1)



1		POLYPHENYLENE SULFIDE		LIGHT BROWN UL94V-0		2		PHOSPHOR BRONZE		CONTACT AREA: GOLD 0.1μm min. LEAD AREA: GOLD PLATING FLASH UNDER PLATING: NICKEL 0.5μm min.	
NO.		MATERIAL		FINISH, REMARKS		NO.		MATERIAL		FINISH, REMARKS	
CODE NO. (COLD) CL				DRAWN		DESIGNED		CHECKED		APPROVED	
				A. SUZUKAWA		H. Doi		H. Ogawa		H. Okawa	
				05.11.05		'05.11.05		'05.11.05		'05.11.05	
		DRAWING NO.		PART NO.							
		EDC3-150823-21		FX8C-100P-SV(91)							
SCALE											
5 : 1											
UNITS		mm		HIROSE ELECTRIC CO.,LTD.		CODE NO.		CL578-0505-0-91			
								1/2			

In case that the application demands a high level of reliability, such as automotive, please contact a company representative for further information. OF REVISION

reliability, such as automotive, for actual information.								
	BY	CHKD	DATE	COUNT	DESCRIPTION OF REVISIONS	BY	CHKD	DATE
△			.	△				.
△			.	△				.
△			.	△				.
△			.	△				.



NOTE 1. 1 TUBE : 14 CONNECTORS.

2. THE DIMENSIONS IN PARENTHESES ARE FOR REFERENCE.

2		POLYVINYL CHLORIDE STOPPER		3		(CONNECTOR)	
NO.		MATERIAL		FINISH, REMARKS		1	
						POLYVINYL CHLORIDE TUBE	
CODE NO. (OLD)		DRAWN		DESIGNED		CHECKED	
CL		A. SUZUKAWA		H. Sai		M. Oyama H. Okawa	
		05.11.05		05.11.05		05.11.05	
DRAWING NO.		PART NO.		FX8C-100P-SV(91)			
SCALE		EDC3-150823-21					
FREE							
UNITS		HIROSE ELECTRIC CO., LTD		CODE NO.			
mm		HRS		CL578-0505-0-91			
				2			

TO	pck			
----	-----	--	--	--