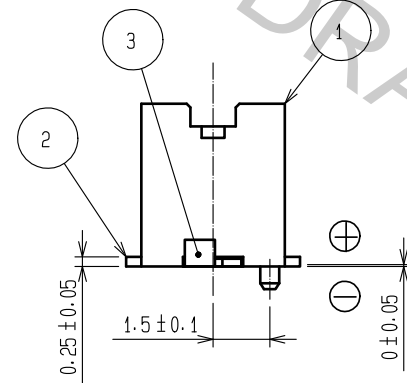
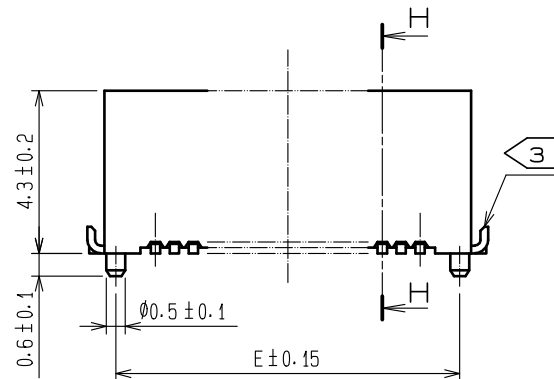
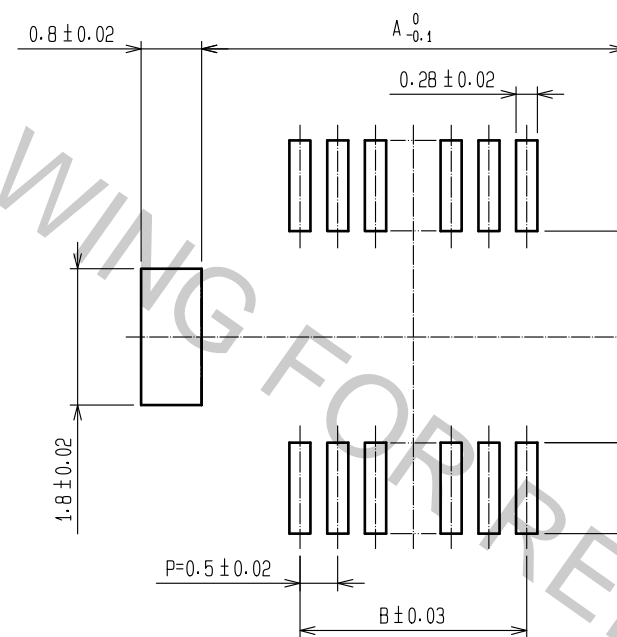


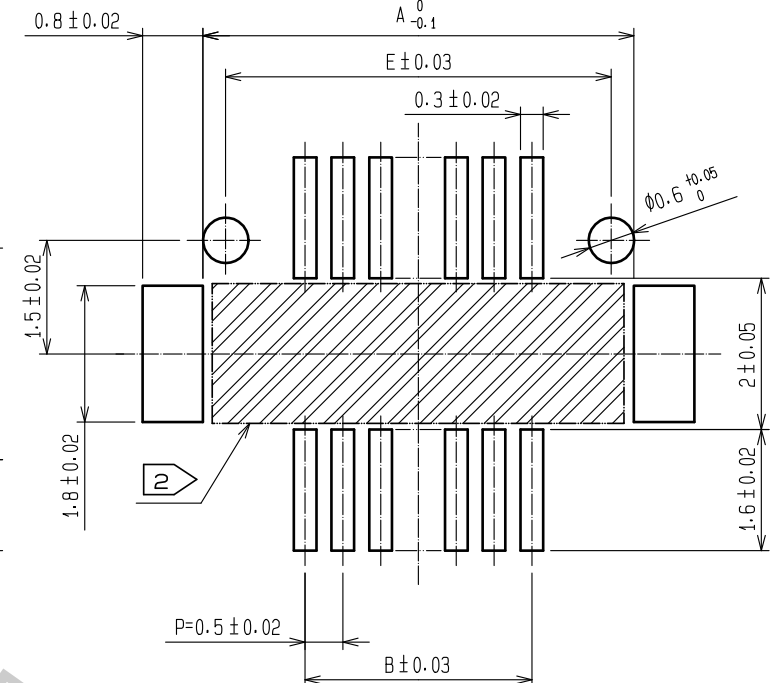
CODE No.	CONTACT	A	B	C	D	E	F	G
CL537-0153-9-86	20	7.2	4.5	5.3	5.7	6.6	5.3	8.1
CL537-0155-4-86	30	9.7	7.0	7.8	8.2	9.1	7.8	10.6
CL537-0156-7-86	36	11.2	8.5	9.3	9.7	10.6	9.3	12.1
CL537-0157-0-86	40	12.2	9.5	10.3	10.7	11.6	10.3	13.1
CL537-0159-5-86	50	14.7	12.0	12.8	13.2	14.1	12.8	15.6
CL537-0161-7-86	60	17.2	14.5	15.3	15.7	16.6	15.3	18.1



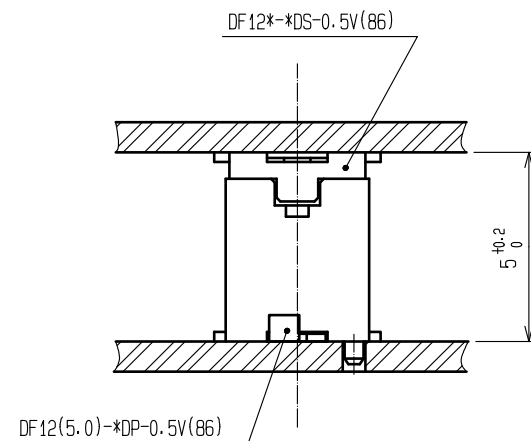
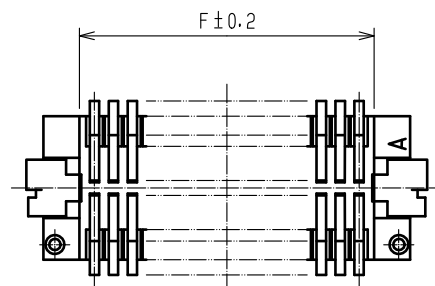
RECOMMEND METAL MASK PATTERN (10:1)



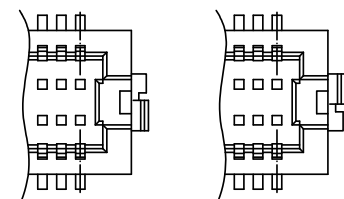
RECOMMENDED PATTERN (10:1)



RECOMMENDED THICKNESS OF  
SOLDER PASTE : 120 μm




- NOTES 1 : LEAD CO-PLANARITY INCLUDING REINFORCED METAL FITTINGS SHALL BE 0.08 mm MAX.  
2 : IF THERE IS PATTERN ON PART, THERE IS A POSSIBILITY THAT IT WILL MAKE CONTACT WITH THE LEADS.  
3 : REINFORCED METAL FITTINGS AS FOLLOWS.



2	PHOSPHOR BRONZE	CONTACT AREA:GOLD PLATED 0.2μm min LEAD AREA:GOLD PLATED 0.015μm OTHERS(UNDER PLATING):NICKEL PLATED 2μm min	7	PS	CLEAR (REINFORCEMENT COLLAR)
			6	PS	BLACK (PLASTIC REEL)
			5	POLYESTER	CLEAR (COVER TAPE)
			4	PS	CLEAR (EMBOSSD CARRIER TAPE)
1	POLYAMIDE	UL94V-0·NATURAL (BEIGE)	3	BRASS	TIN PLATED 2μm min (UNDER PLATING):NICKEL 1μm min
NO.	MATERIAL	FINISH . REMARKS	NO.	MATERIAL	FINISH . REMARKS
UNITS mm		SCALE 5 : 1	COUNT 1	DESCRIPTION OF REVISIONS DIS-H-00001707	
HIROSE ELECTRIC CO., LTD.		APPROVED : KH. IKEDA	12.01.11	DESIGNED SH. HOSODA	CHECKED TS. MIYAZAKI
		CHECKED : TS. MIYAZAKI	12.01.10	DATE 16.06.10	
		DESIGNED : YH. MICHIDA	12.01.10	DRAWING NO. EDC3-163514-77	
		DRAWN : YH. MICHIDA	12.01.10	PART NO. DF12(5.0)-*DP-0.5V(86)	
				CODE NO. CL537	1/2



# HRS

DRAWING NO.	EDC3-163514-77		
PART NO.	DF12(5.0)-*DP-0.5V(86)		
CODE NO.	CL537		$\frac{2}{2}$