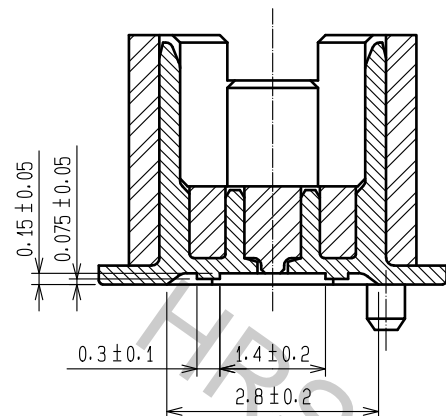
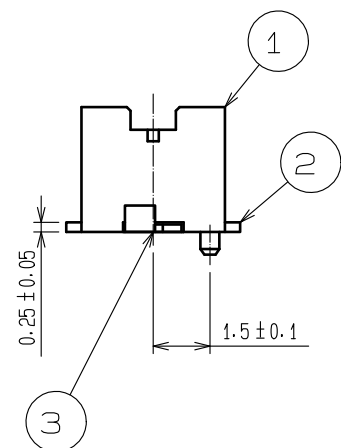
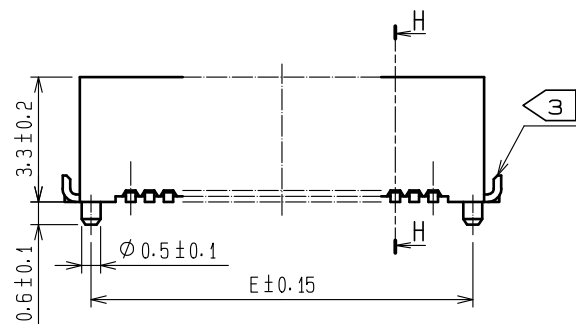


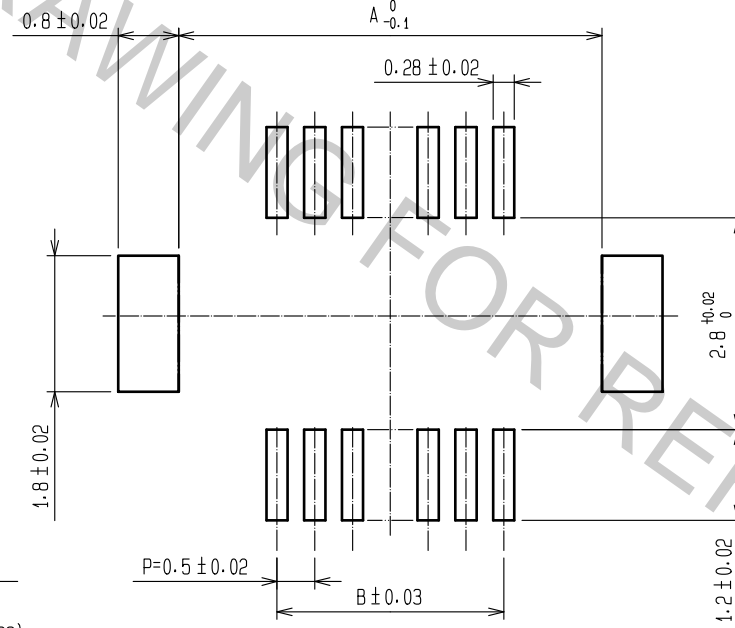
H-H(10:1)



CODE NO.	CONTACT	A	B	C	D	E	F	G
CL537-0053-4-86	20	7.2	4.5	5.3	5.7	6.6	5.3	8.1
CL537-0055-0-86	30	9.7	7.0	7.8	8.2	9.1	7.8	10.6
CL537-0926-2-86	32	10.2	7.5	8.3	8.7	9.6	8.3	11.1
CL537-0056-2-86	36	11.2	8.5	9.3	9.7	10.6	9.3	12.1
CL537-0057-5-86	40	12.2	9.5	10.3	10.7	11.6	10.3	13.1
CL537-0059-0-86	50	14.7	12.0	12.8	13.2	14.1	12.8	15.6
CL537-0061-2-86	60	17.2	14.5	15.3	15.7	16.6	15.3	18.1

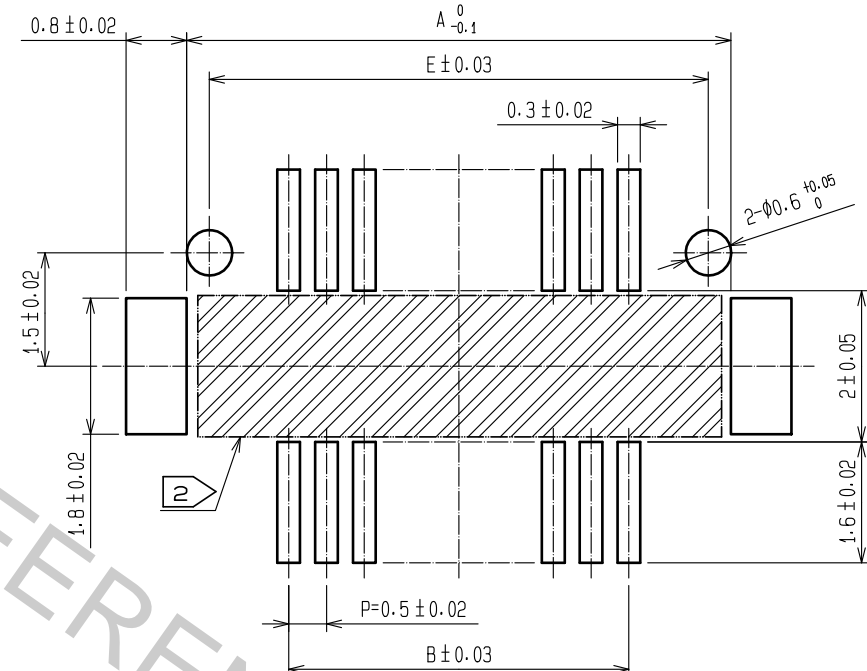


RECOMMENDED METAL MASK PATTERN (10:1)



RECOMMENDED THICKNESS OF
METAL MASK: 120µm

RECOMMENDED PATTERN(10:1)

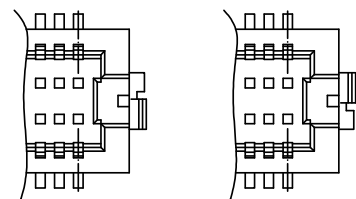


RECOMMENDED THICKNESS OF
SOLDER PASTE: 120µm

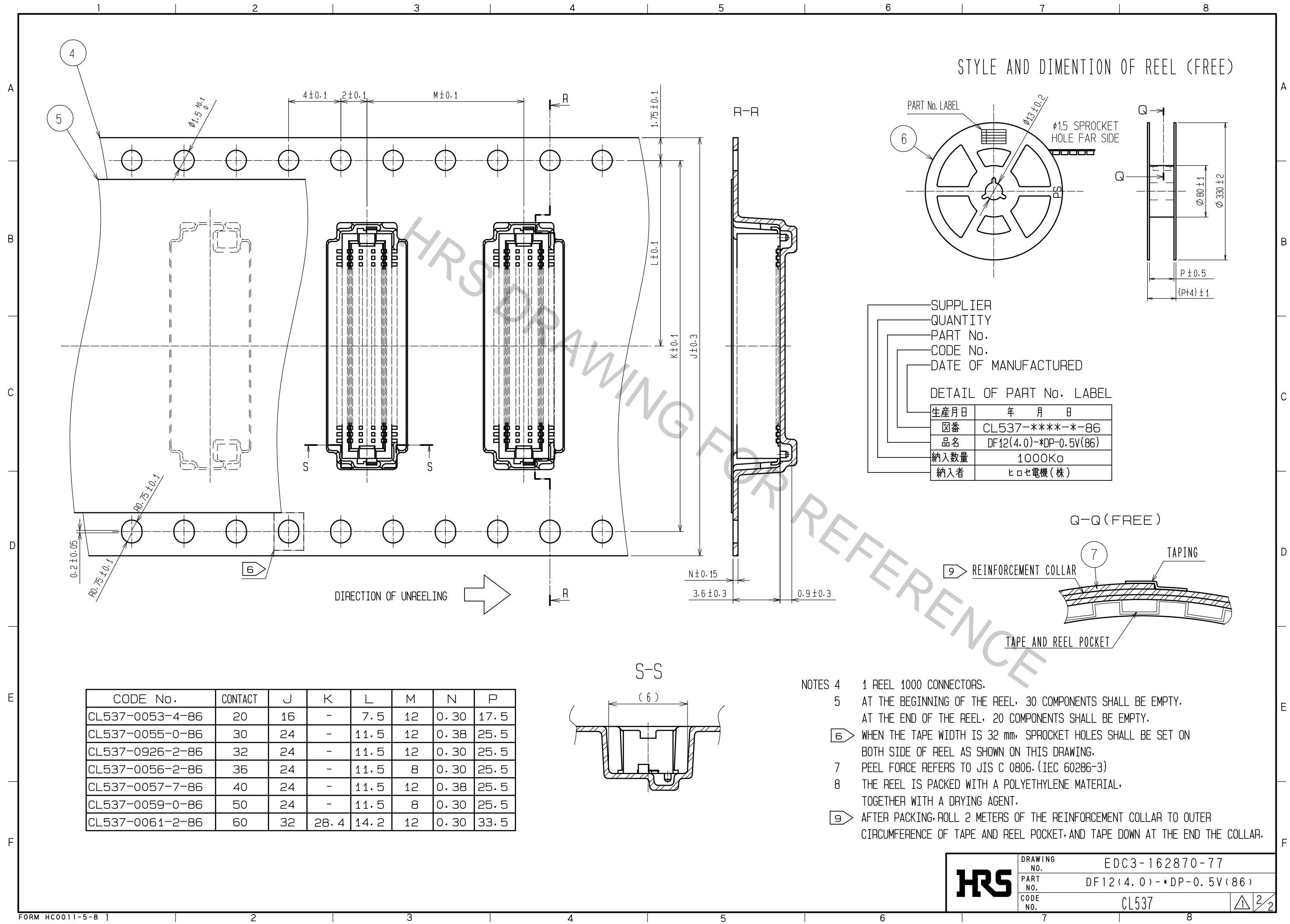
NOTES 1 LEAD CO-PLANARITY INCLUDING REINFORCED METAL FITTINGS SHALL BE 0.08 mm MAX.

2 IF THERE IS PATTERN ON PART, THERE IS A POSSIBILITY
THAT IT WILL MAKE CONTACT WITH THE LEADS.

3 REINFORCED METAL FITTINGS AS FOLLOWS.



2	PHOSPHOR BRONZE	CONTACT AREA:GOLD PLATED 0.2µm min LEAD AREA:GOLD PLATED 0.015µm min OTHERS(UNDER PLATING):NICKEL 2µm min	7	PS	CLEAR(REINFORCEMENT COLLAR)
			6	PS	BLACK(PLASTIC REEL)
			5	POLYESTER	CLEAR(COVER TAPE)
			4	PS	CLEAR(EMBOSSD CARRIER TAPE)
1	POLYAMIDE	BEIGE·UL94V-0	3	BRASS	TIN PLATED 2µm min UNDER PLATING:NICKEL 1µm min
NO.	MATERIAL	FINISH . REMARKS	NO.	MATERIAL	FINISH . REMARKS
UNITS mm			SCALE 5 : 1		
			COUNT 1		
			DESCRIPTION OF REVISIONS DIS-H-00001707		
			DESIGNED SH. HOSODA		
			CHECKED TS. MIYAZAKI		
			DATE 16.06.10		
HIROSE ELECTRIC CO., LTD.			APPROVED : KH. IKEDA 13.08.19		
			CHECKED : YH. MICHIDA 13.08.09		
			DESIGNED : YN. SAKAMOTO 13.08.08		
			DRAWN : KR. AJITO 13.08.08		
			DRAWING NO. EDC3-162870-77		
			PART NO. DF12(4.0)-*DP-0.5V(86)		
			CODE NO. CL537		



CODE No.	CONTACT	J	K	L	M	N	P
CL537-0053-4-86	20	16	-	7.5	12	0.30	17.5
CL537-0055-0-86	30	24	-	11.5	12	0.38	25.5
CL537-0926-2-86	32	24	-	11.5	12	0.30	25.5
CL537-0056-2-86	36	24	-	11.5	8	0.30	25.5
CL537-0057-7-86	40	24	-	11.5	12	0.38	25.5
CL537-0059-0-86	50	24	-	11.5	8	0.30	25.5
CL537-0061-2-86	60	32	28.4	14.2	12	0.30	33.5

