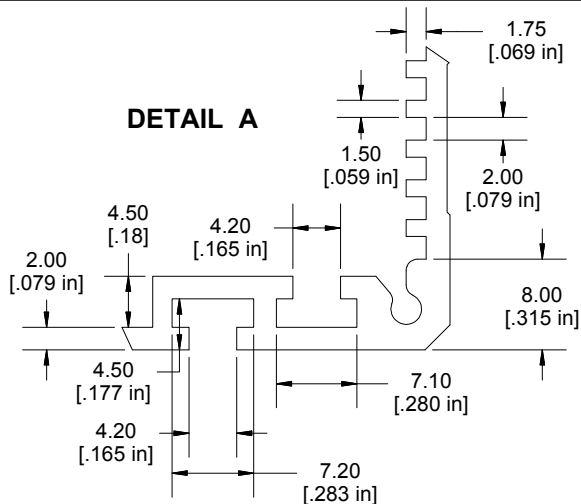
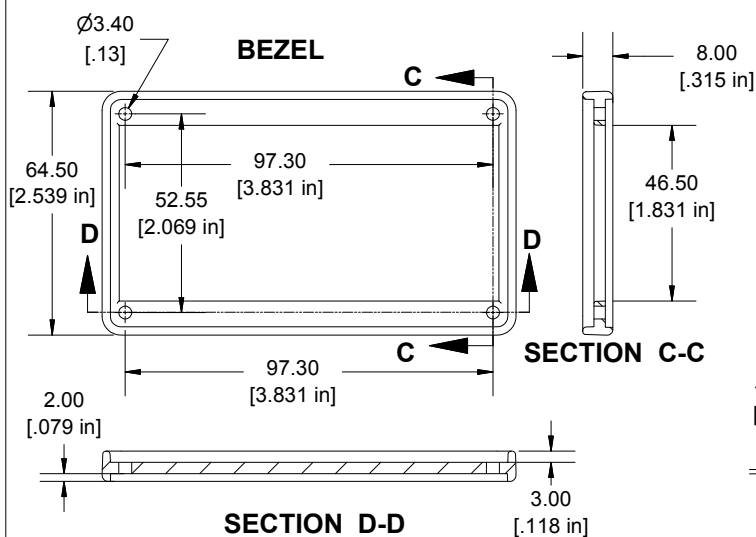
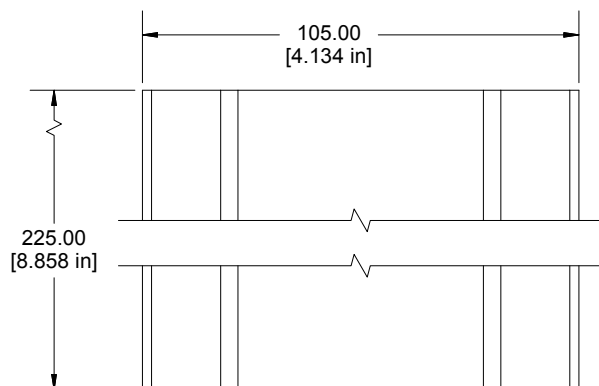
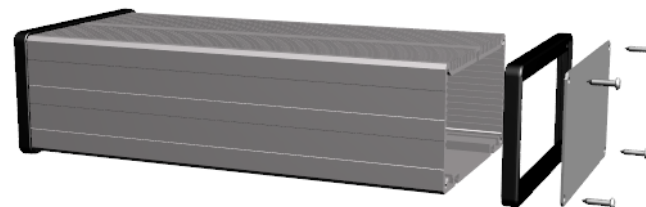
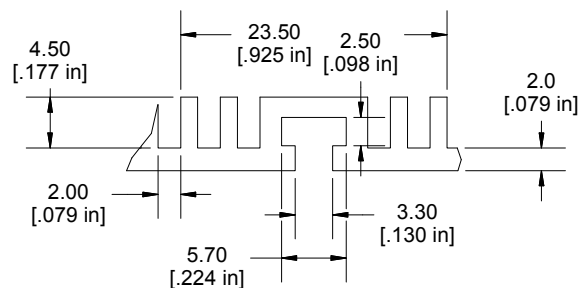


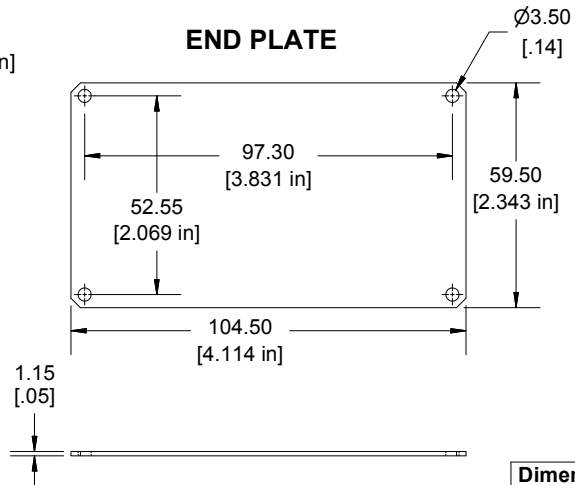
DETAIL A



DETAIL B



END PLATE



Enclosures can be Factory Modified (Milling, Drilling, Printing etc.)
Contact Factory mjm@hammondmfg.com for quotes
Solid models of this enclosure available in STEP or IGES.
(Part number and text placement/orientation on our products are subject to change,
we do not recommend using them as a locating reference for modification purposes)

NOTE

Purchased assembly includes Extrusion, 2 End Plate, 2 Bezels and 8 screws

Recommended Cover screw torque -- 2.5-3.5 lbf-in (30-40 cN-m)

PART NUMBERS

SINK BOX

| | |
|---|--------|
| Extrusion Aluminum Alloy / Black Anodized | 531622 |
| Extrusion Aluminum Alloy / Clear Anodized | 431622 |

ACCESSORIES

| | |
|---|--------|
| End Plate Aluminum Alloy / Black Anodized | 031624 |
| End Plate Aluminum Alloy / Clear Anodized | 131624 |



**HAMMOND
MANUFACTURING®**

531622
(105 X 60X 225)

Dimensions:
mm
[inches]

www.hammondmfg.com