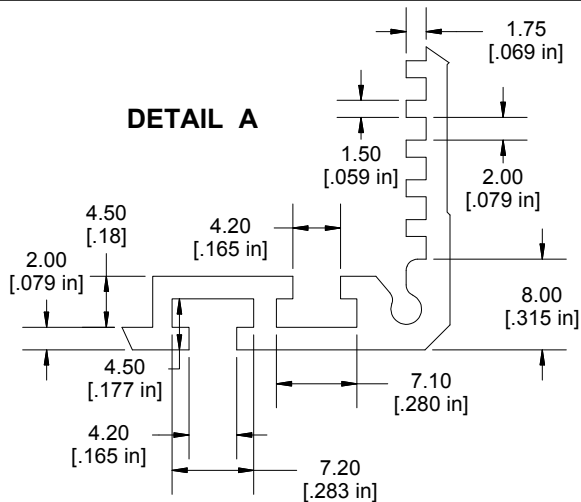
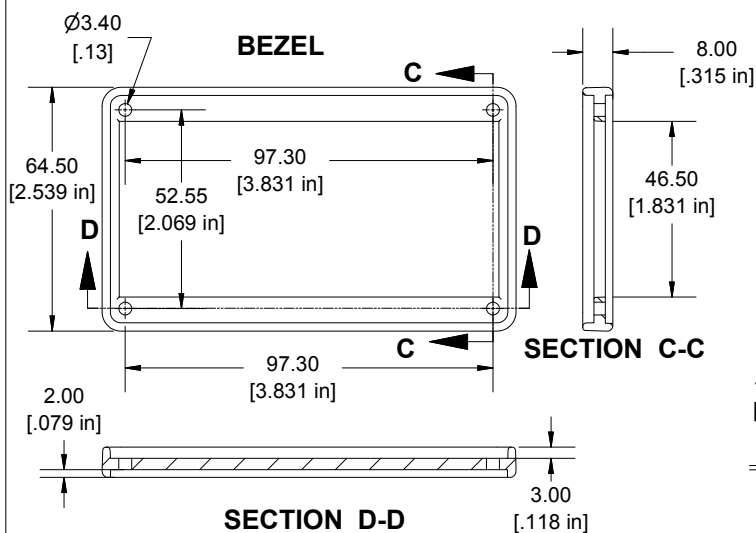
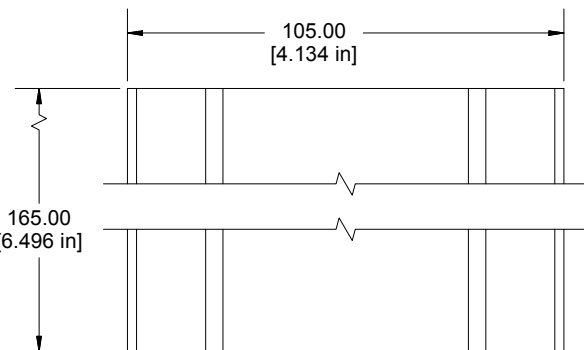
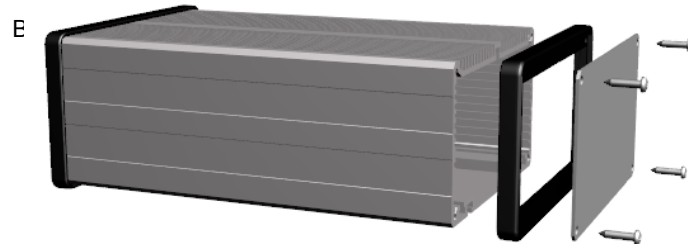
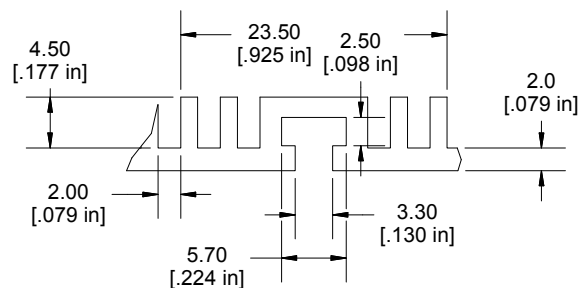


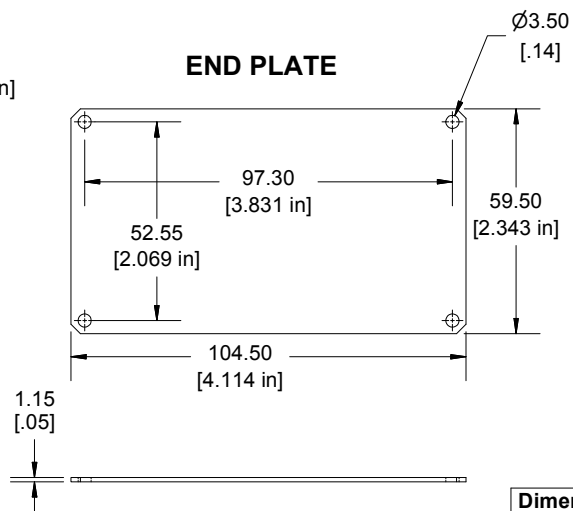
**DETAIL A**



**DETAIL B**



**END PLATE**



Enclosures can be Factory Modified ( Milling, Drilling, Printing etc.)  
Contact Factory [mjm@hammondmg.com](mailto:mjm@hammondmg.com) for quotes  
Solid models of this enclosure available in STEP or IGES.  
(Part number and text placement/orientation on our products are subject to change,  
we do not recommend using them as a locating reference for modification purposes)

**NOTE**

Purchased assembly includes Extrusion, 2 End Plate, 2 Bezels and 8 screws

**Recommended Cover screw torque -- 2.5-3.5 lbf-in (30-40 cN-m)**

**PART NUMBERS**

**SINK BOX**

Extrusion Aluminum Alloy / Black Anodized	531621
Extrusion Aluminum Alloy / Clear Anodized	431621

**ACCESSORIES**

End Plate Aluminum Alloy / Black Anodized	031624
End Plate Aluminum Alloy / Clear Anodized	131624



**HAMMOND  
MANUFACTURING®**

531621

(105 X 60X 165)

[www.hammondmg.com](http://www.hammondmg.com)

**Dimensions:**  
mm  
[inches]