

**MICRO SWITCH**  
FREEPORT ILLINOIS U.S.A.  
A DIVISION OF HONEYWELL  
FED. MFG. CODE 91929

# SWITCH-ENCLOSED

CATALOG LISTING  
**EXD-AR-3**

EXD-AR-3

M

DRAWING  
NUMBER

9

ISSUE

REPLACES

PR-8880

14OCT10

CMH

CHECK

26APR05

AK

CHECK

7JUNE80

CHECK

14OCT10

## REVISIONS

A	CO	58360	9 NOV 85
B	CO60496	JAS	1 NOV 86
C	CO61381	DAW	23 APR 87
D	CO63239	TLB	22 MAR 88
E	CO73019	MAM	19 SEP 92
F	0012750	DVM	26 APR 05
G	0017245	KRB	28 NOV 05
H	0070470	SJK	14OCT10

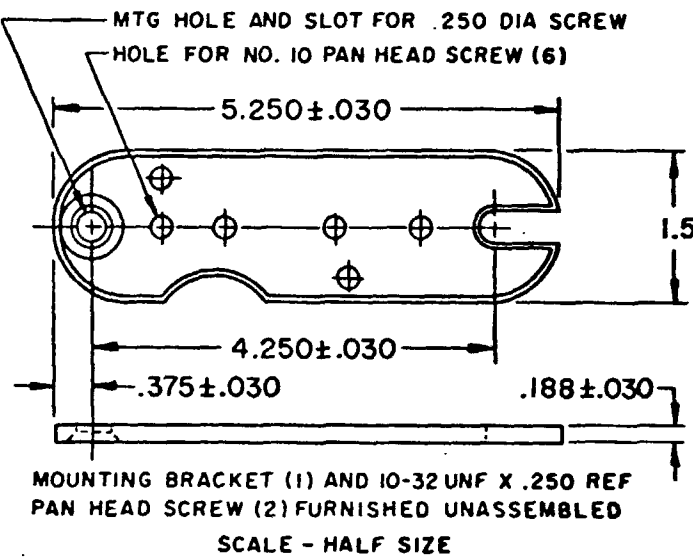
FO-5285 1-A

DRAWN

80

5 JUNE

SL



NO. 14 LEADS PVC INSULATION 36.000 MIN BEYOND HOUSING  
3 (7)

ROLLER LEVER  
ADJUSTABLE THRU  
360°

.690±.030

.780±.030

2.015±.030

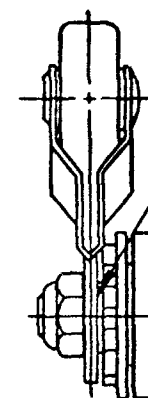
3.660±.030

2.78

1.700±.060

2.750±.008

.53



CONDUIT SIZE  
1/2"-14 NPT

.875±.015 DIA

.781 REF

1/2-14 N.P.T. THREAD  
(5 FULL THREADS MIN)

.968±  
.008

.53 WITHOUT WIRE LEAD 6/7

RIGHT HAND  
CLOCKWISE  
ROTATION

1.56 R

MOUNTING HOLE IN  
OPPOSITE WALL (2)

1.27

2.56

.70

.968±  
.008

2.062±.008

.53

1.937±.008

1.34

4 X 5mm HEX DRIVE CAP SCREW,  
WRENCH FURNISHED WITH PRODUCT

.38

1.812±.008

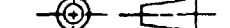
.69

10-32 UNF LOCKING  
TYPE NUT .375 REF  
ACROSS FLATS

.780±.030

THIS DRAWING COVERS A PROPRIETARY ITEM AND IS THE PROPERTY  
OF MICRO SWITCH, A DIVISION OF HONEYWELL. THIS DRAWING IS NOT  
TO BE COPIED OR USED WITHOUT THE APPROVAL OF MICRO SWITCH.

THIRD ANGLE PROJECTION



SCALE FULL

DO NOT SCALE PRINT

TOLERANCES  
APPLY TO DESIGN UNITS CONVERSIONS ARE ONLY FOR  
REFERENCE UNLESS NOTED TOLERANCES ARE ±

	DESIGN	UNITS	TOL.	DESIGN	UNITS	TOL.
NO PLACES	1	IN	1/64	1	MM	0.050
ONE PLACE	2, 3	IN	0.0010	2, 3	MM	0.0010
TWO PLACES	4, 5	IN	0.0001	4, 5	MM	0.0001
THREE PLACES	6, 7	IN	0.00001	6, 7	MM	0.00001

DESIGN UNITS

RAW MATERIAL - COMMERCIAL STANDARD

MICRO SWITCH STANDARDS APPLY

DIMENSIONS ARE TO BE MET BEFORE  
PROTECTIVE COATINGS ARE APPLIED

WEIGHT

## NOTES

- (8) MOUNTING SCREW HOLES, 10-32 UNF-2B THREADS X .219 REF. DEEP
- EXPLOSION PROOF - UNDERWRITERS' LAB. INC. LISTED FOR HAZARDOUS LOCATIONS NEMA 7, CLASS 1, GROUPS B, C AND D, NEMA 9, CLASS II, GROUPS E, F AND G.
- COM LEADS - BLACK, N.C. LEADS - RED, N.O. LEADS - BLUE, GROUND LEAD - GREEN
- EUROPEAN HAZARDOUS LOCATIONS DESIGNATION: Ex dIIB + H2 T6 CATAGORY II 2 G
- SEAL RATING : NEMA 1
- EXTERNAL GROUND SCREW MAY BE ASSEMBLED TO ANY UNUSED MOUNTING SCREW HOLE
- ASSEMBLE PROVIDED SPLIT LOCKWASHER BETWEEN GROUND LUG AND HOUSING

RASTER